

FEDERAL AVIATION ADMINISTRATION
FLIGHT STANDARDS SERVICE
STANDARD TERMINAL ARRIVAL (STAR)

Bearings, headings, courses, tracks and radials are magnetic. Elevations and altitudes are in feet, MSL. Altitudes are minimum altitudes unless otherwise indicated.
Ceilings are in feet above airport elevation. Distances are in nautical miles. Visibilities are in statute miles or feet RVR unless otherwise indicated.

Arrival Name		Number	STAR Computer Code	Superseded Number	Dated	Effective Date
KRAKN (RNAV)		ONE	KRAKN.KRAKN1	NONE		
TRANSITION ROUTES:						
Transition Name	Transition Computer Codes	From FIX/NAVAID	To FIX/NAVAID	Course	Distance	MEA MOCA MAA Crossing Altitudes / Fixes
BULZI	BULZI.KRAKN1	BULZI	BULZI			
			SNAPY	154.02	38.62	16000 1800
			NICKI	154.21	38.49	16000 1600
			ENDEW	163.20	61.11	16000 1600
			FARLU	175.87	32.73	16000 1600
			PIKKR	174.36	49.69	16000 1400
			MARCI	145.92	79.51	14500 1400
			KARTR	152.06	27.83	10000 1400
			KRAKN	206.83	15.06	9000 1300
DEFUN	DEFUN.KRAKN1	DEFUN	DEFUN			
			CABLO	095.70	66.78	16000 1900
			BULZI	125.06	46.28	16000 1900
			SNAPY	154.02	38.62	16000 1800
			NICKI	154.21	38.49	16000 1600
			ENDEW	163.20	61.11	16000 1600
			FARLU	175.87	32.73	16000 1600
			PIKKR	174.36	49.69	16000 1400
			MARCI	145.92	79.51	14500 1400
			KARTR	152.06	27.83	10000 1400
			KRAKN	206.83	15.06	9000 1300
ENDEW	ENDEW.KRAKN1	ENDEW	ENDEW			
			FARLU	175.87	32.73	16000 1600
			PIKKR	174.36	49.69	16000 1400
			MARCI	145.92	79.51	14500 1400
			KARTR	152.06	27.83	10000 1400
			KRAKN	206.83	15.06	9000 1300
KARTR	KARTR.KRAKN1	KARTR	KARTR			

FEDERAL AVIATION ADMINISTRATION
FLIGHT STANDARDS SERVICE
STANDARD TERMINAL ARRIVAL (STAR)

Bearings, headings, courses, tracks and radials are magnetic. Elevations and altitudes are in feet, MSL. Altitudes are minimum altitudes unless otherwise indicated.
Ceilings are in feet above airport elevation. Distances are in nautical miles. Visibilities are in statute miles or feet RVR unless otherwise indicated.

Arrival Name KRAKN (RNAV)		Number ONE		STAR Computer Code KRAKN.KRAKN1	Superseded Number NONE			Dated	Effective Date
Transition Name	Transition Computer Codes	From FIX/NAVAID	To FIX/NAVAID	Course	Distance	MEA	MOCA	MAA	Crossing Altitudes / Fixes
			KRAKN	206.83	15.06	9000	1300		
SABEE	SABEE.KRAKN1	SABEE	SABEE						
			EXACT	174.14	20.01	14500	1600		
			MATNY	172.12	13.94	14500	1600		
			MARCI	161.66	41.33	14500	1400		
			KARTR	152.06	27.83	10000	1400		
			KRAKN	206.83	15.06	9000	1300		
SHAQQ	SHAQQ.KRAKN1	SHAQQ	SHAQQ						
			MARCI	096.26	93.37	14500	1400		
			KARTR	152.06	27.83	10000	1400		
			KRAKN	206.83	15.06	9000	1300		

ARRIVAL ROUTE DESCRIPTION:

KEYW: FROM KRAKN ON TRACK 206.78/16.54 TO CROSS GIGIH AT 10000 AND AT 250 KIAS, THEN ON TRACK 206.73/8.27 TO STING.

LANDING KEYW RWY 9: FROM STING ON TRACK 216.90/17.38 TO CROSS CHETS AT OR ABOVE 3000 AND AT 210 KIAS. EXPECT RNAV (GPS) RWY 9 APPROACH.

LANDING KEYW RWY 27: FROM STING ON TRACK 192.51/19.74 TO CROSS BUSBY AT OR ABOVE 6000 AND AT OR BELOW 220 KIAS, THEN ON TRACK 183.05/5.58 TO SKINT, THEN ON TRACK 093.35/6.95 TO CROSS BEHAV AT OR ABOVE 4000 AND AT 210 KIAS, THEN ON TRACK 093.40/9.35 TO CROSS AKUNS AT OR ABOVE 3000 AND AT 210 KIAS. EXPECT RNAV (GPS) RWY 27 APPROACH.

LANDING KNQX: FROM KRAKN ON TRACK 206.78/16.54 TO CROSS GIGIH AT 10000 AND AT 250 KIAS, THEN ON TRACK 178.39/7.16 TO CROSS GUZLR AT OR ABOVE 8000, THEN ON TRACK 178.39. EXPECT RADAR VECTORS TO FINAL APPROACH COURSE.

PBN REQUIREMENT NOTES:

RNAV 1 - DME/DME/IRU OR GPS

EQUIPMENT REQUIREMENT NOTES:

RADAR REQUIRED

PROCEDURAL DATA NOTES:

NOTE: JET AIRCRAFT ONLY

NOTE: DO NOT FILE ENDEW OR KARTR TRANSITIONS - TO BE ASSIGNED BY ATC.

NOTE: SABEE TRANSITION FOR TRAFFIC DEPARTING TAMPA AREA ONLY.

FIXES AND/OR HOLDING PATTERNS:

CHART HOLDING AT BEHAV: HOLD W, RT, 093.35 INBOUND, 4 NM LEGS.

CHART HOLDING AT GIGIH: HOLD NE, LT, 206.78 INBOUND, 6 NM LEGS.

CHART HOLDING AT KARTR: HOLD N, LT, 166.91 INBOUND, 10 NM LEGS, 230 KIAS.

FEDERAL AVIATION ADMINISTRATION
FLIGHT STANDARDS SERVICE
STANDARD TERMINAL ARRIVAL (STAR)

Bearings, headings, courses, tracks and radials are magnetic. Elevations and altitudes are in feet, MSL. Altitudes are minimum altitudes unless otherwise indicated.
Ceilings are in feet above airport elevation. Distances are in nautical miles. Visibilities are in statute miles or feet RVR unless otherwise indicated.

Arrival Name	Number	STAR Computer Code	Superseded Number	Dated	Effective Date
KRAKN (RNAV)	ONE	KRAKN.KRAKN1	NONE		

COMMUNICATIONS:

CHART: NAVY KEY WEST APP CON

AIRPORTS SERVED:

AIRPORT ID	CITY	STATE
KEYW	KEY WEST	FL
KNQX	KEY WEST	FL

LOST COMMUNICATIONS PREFERENCES:

REMARKS:

THE ENVIRONMENTAL REVIEW UNDER ORDER 1050.1 (LATEST EDITION) AND THE NOISE SCREENING HAVE BEEN ACCOMPLISHED.
OBSTACLES OVER WATER ASSUME 295 SHIP HEIGHT.

ADDITIONAL FLIGHT DATA:

DME/DME ASSESSMENT: SAT (RNP 2.0)
MAG VAR: KEYW 04W/2000.
CHART: RESTRICTED AREA R-2916 - CAUTION CABLE AND UNMARKED BALLOON TO 14000 MSL.
CHART AT AKUNS TERMINUS: KEYW LDG RWY 27
CHART AT CHETS TERMINUS: KEYW LDG RWY 9
CHART AT GUZLR TERMINUS: LDG KNQX

FLIGHT INSPECTED BY:

JAMES HAWLEY

ORGANIZATION: DATE:

FPO 08/13/2024

Flight Inspected Signature:

Digitally signed by
ROBERT G HAMILTON
Aug 30, 2024

DEVELOPED BY:

KWEKU DONKOR

Digitally signed by
KWEKU DONKOR
Apr 11, 2024

AJV-A433 12/21/2023

Developed By Signature:

APPROVED BY:

BEV BORDY

AJV-A430

Approved By Signature:

Digitally signed by
ROBERT G HAMILTON
Aug 30, 2024

CHANGES:

REASONS:

08/30/2024: THIS IS AN UPDATED COPY OF THE FORM DEVELOPED ON 12/27/2024.
REMOVED "NOTE: FOR NON-GPS EQUIPPED AIRCRAFT USING THE RWY 27 TRANSITION, EYW AND NQX DMES MUST BE OPERATIONAL." PER PBN OFFICE

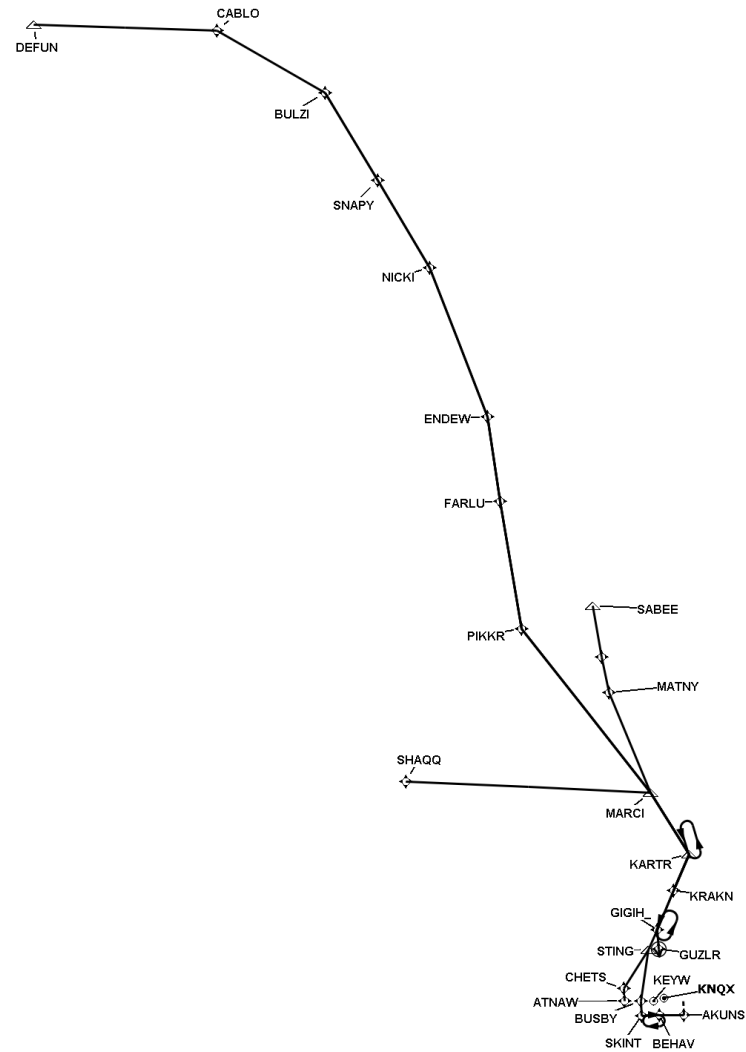
09/23/2024: THIS IS A CORRECTED COPY OF THE FORM APPROVED ON 8/30/2024.
ON 8260-17.2 FIX BUSBY L/L CHANGED TO 243318.77N / 0815102.39W TO MATCH 8260-2.



FEDERAL AVIATION ADMINISTRATION
FLIGHT STANDARDS SERVICE
STANDARD TERMINAL ARRIVAL (STAR)

Bearings, headings, courses, tracks and radials are magnetic. Elevations and altitudes are in feet, MSL. Altitudes are minimum altitudes unless otherwise indicated.
Ceilings are in feet above airport elevation. Distances are in nautical miles. Visibilities are in statute miles or feet RVR unless otherwise indicated.

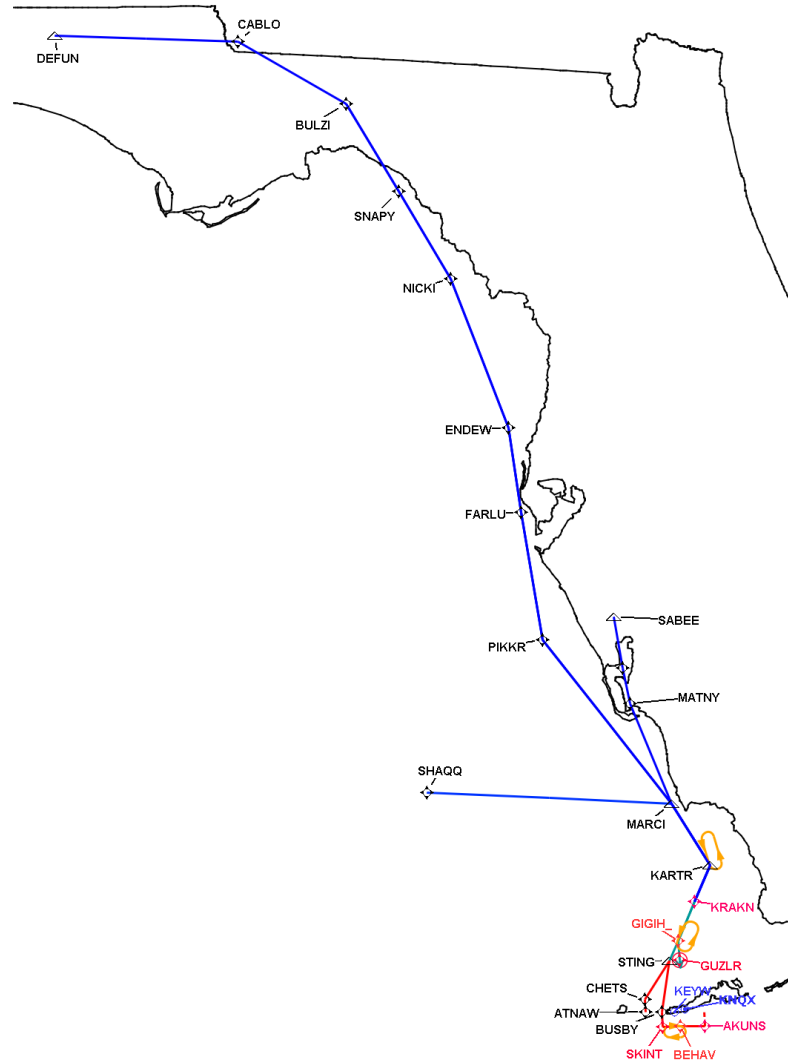
Arrival Name	Number	STAR Computer Code	Superseded Number	Dated	Effective Date
KRAKN (RNAV)	ONE	KRAKN.KRAKN1	NONE		
Graphic Depiction 1					



FEDERAL AVIATION ADMINISTRATION
FLIGHT STANDARDS SERVICE
STANDARD TERMINAL ARRIVAL (STAR)

Bearings, headings, courses, tracks and radials are magnetic. Elevations and altitudes are in feet, MSL. Altitudes are minimum altitudes unless otherwise indicated.
Ceilings are in feet above airport elevation. Distances are in nautical miles. Visibilities are in statute miles or feet RVR unless otherwise indicated.

Arrival Name	Number	STAR Computer Code	Superseded Number	Dated	Effective Date
KRAKN (RNAV)	ONE	KRAKN.KRAKN1	NONE		
Graphic Depiction 2					

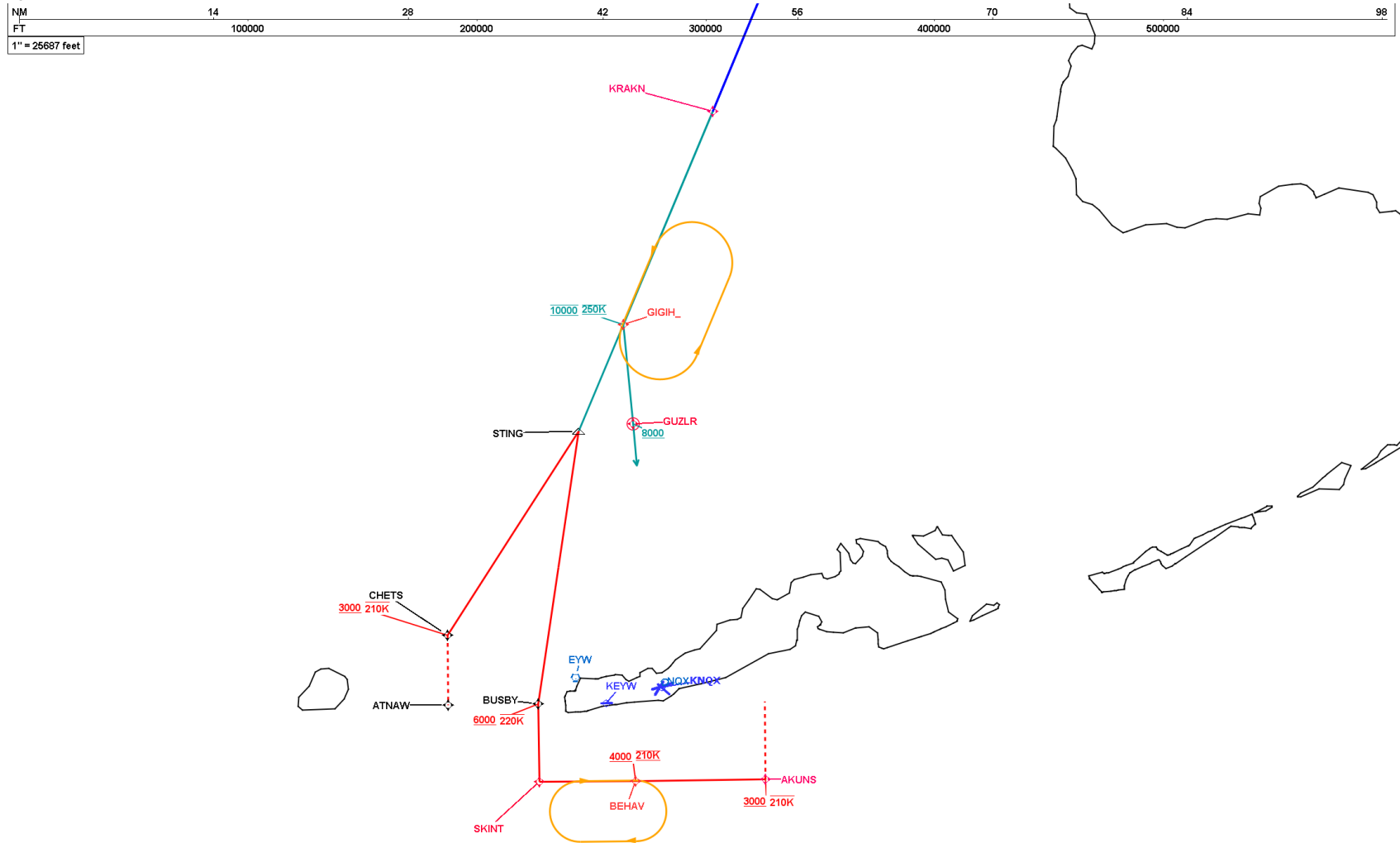


FEDERAL AVIATION ADMINISTRATION
FLIGHT STANDARDS SERVICE
STANDARD TERMINAL ARRIVAL (STAR)

Bearings, headings, courses, tracks and radials are magnetic. Elevations and altitudes are in feet, MSL. Altitudes are minimum altitudes unless otherwise indicated.
Ceilings are in feet above airport elevation. Distances are in nautical miles. Visibilities are in statute miles or feet RVR unless otherwise indicated.

Arrival Name	Number	STAR Computer Code	Superseded Number	Dated	Effective Date
KRAKN (RNAV)	ONE	KRAKN.KRAKN1	NONE		

Graphic Depiction 3



**FEDERAL AVIATION ADMINISTRATION
FLIGHT STANDARDS SERVICE
STAR (DATA RECORD)**

Arrival Name KRAKN (RNAV)		Number ONE		STAR Computer Code KRAKN.KRAKN1			Superseded Number NONE		Dated	Effective Date
<u>FIX/NAVAID</u>	<u>LAT/LONG</u>	<u>C</u>	<u>FO/FB</u>	<u>LEG TYPE</u>	<u>TC</u>	<u>DIST (NM)</u>	<u>ALTITUDE</u>	<u>SPEED</u>	<u>REMARKS</u>	
En Route Transition										
BULZI	302224.93N / 0840434.47W	Y		IF					BULZI.KRAKN1	
SNAPY	294851.17N / 0834223.61W	Y	FB	TF	150.02	38.62				
NICKI	291520.19N / 0832031.80W	Y	FB	TF	150.21	38.49				
ENDEW	281801.73N / 0825556.70W	Y	FB	TF	159.20	61.11				
FARLU	274532.56N / 0825043.77W	Y	FB	TF	171.87	32.73				
PIKKR	265624.43N / 0824125.28W	Y	FB	TF	170.36	49.69				
MARCI	255327.84N / 0814702.37W	Y	FB	TF	141.92	79.51				
KARTR	252945.76N / 0813046.24W	Y	FB	TF	148.06	27.83				
KRAKN	251550.48N / 0813712.87W	Y	FB	TF	202.83	15.06				
En Route Transition										
DEFUN	304851.27N / 0860753.09W	Y		IF					DEFUN.KRAKN1	
CABLO	304629.00N / 0845024.00W	Y	FB	TF	091.70	66.78				
BULZI	302224.93N / 0840434.47W	Y	FB	TF	121.06	46.28				
SNAPY	294851.17N / 0834223.61W	Y	FB	TF	150.02	38.62				
NICKI	291520.19N / 0832031.80W	Y	FB	TF	150.21	38.49				
ENDEW	281801.73N / 0825556.70W	Y	FB	TF	159.20	61.11				
FARLU	274532.56N / 0825043.77W	Y	FB	TF	171.87	32.73				
PIKKR	265624.43N / 0824125.28W	Y	FB	TF	170.36	49.69				
MARCI	255327.84N / 0814702.37W	Y	FB	TF	141.92	79.51				
KARTR	252945.76N / 0813046.24W	Y	FB	TF	148.06	27.83				
KRAKN	251550.48N / 0813712.87W	Y	FB	TF	202.83	15.06				
En Route Transition										
ENDEW	281801.73N / 0825556.70W	Y		IF					ENDEW.KRAKN1	
FARLU	274532.56N / 0825043.77W	Y	FB	TF	171.87	32.73				
PIKKR	265624.43N / 0824125.28W	Y	FB	TF	170.36	49.69				
MARCI	255327.84N / 0814702.37W	Y	FB	TF	141.92	79.51				

FEDERAL AVIATION ADMINISTRATION
FLIGHT STANDARDS SERVICE
STAR (DATA RECORD)

Arrival Name KRAKN (RNAV)		Number ONE		STAR Computer Code KRAKN.KRAKN1		Superseded Number NONE		Dated	Effective Date
<u>FIX/NAVAID</u>	<u>LAT/LONG</u>	<u>C</u>	<u>FO/FB</u>	<u>LEG TYPE</u>	<u>TC</u>	<u>DIST (NM)</u>	<u>ALTITUDE</u>	<u>SPEED</u>	<u>REMARKS</u>
KARTR	252945.76N / 0813046.24W	Y	FB	TF	148.06	27.83			
KRAKN	251550.48N / 0813712.87W	Y	FB	TF	202.83	15.06			
En Route Transition									
KARTR	252945.76N / 0813046.24W	Y		IF					KARTR.KRAKN1
KRAKN	251550.48N / 0813712.87W	Y	FB	TF	202.83	15.06			
En Route Transition									
SABEE	270516.20N / 0821129.33W	Y		IF					SABEE.KRAKN1
EXACT	264529.90N / 0820739.62W	Y	FB	TF	170.14	20.01			
MATNY	263149.04N / 0820427.61W	Y	FB	TF	168.12	13.94			
MARCI	255327.84N / 0814702.37W	Y	FB	TF	157.66	41.33			
KARTR	252945.76N / 0813046.24W	Y	FB	TF	148.06	27.83			
KRAKN	251550.48N / 0813712.87W	Y	FB	TF	202.83	15.06			
En Route Transition									
SHAQQ	255746.00N / 0833030.00W	Y		IF					SHAQQ.KRAKN1
MARCI	255327.84N / 0814702.37W	Y	FB	TF	092.26	93.37			
KARTR	252945.76N / 0813046.24W	Y	FB	TF	148.06	27.83			
KRAKN	251550.48N / 0813712.87W	Y	FB	TF	202.83	15.06			
Common Route									
KRAKN	251550.48N / 0813712.87W	Y		IF					KRAKN.KRAKN1
GIGIH	250032.70N / 0814415.84W	Y	FB	TF	202.78	16.54	AT 10000	AT 250K	
STING	245253.72N / 0814746.65W	Y	FB	TF	202.73	08.27			
Common Route									
KRAKN	251550.48N / 0813712.87W	Y		IF					KRAKN.KRAKN1
GIGIH	250032.70N / 0814415.84W	Y	FB	TF	202.78	16.54	AT 10000	AT 250K	



FEDERAL AVIATION ADMINISTRATION
FLIGHT STANDARDS SERVICE
STAR (DATA RECORD)

Arrival Name KRAKN (RNAV)		Number ONE		STAR Computer Code KRAKN.KRAKN1		Superseded Number NONE		Dated	Effective Date
<u>FIX/NAVAID</u>	<u>LAT/LONG</u>	<u>C</u>	<u>FO/FB</u>	<u>LEG TYPE</u>	<u>TC</u>	<u>DIST (NM)</u>	<u>ALTITUDE</u>	<u>SPEED</u>	<u>REMARKS</u>
GUZLR	245323.86N / 0814329.71W	Y	FO	TF	174.39	07.16	AT/ABOVE 8000		
KNQX				FM	174.39				
Runway Transition									
STING	245253.72N / 0814746.65W	Y		IF					
CHETS	243815.07N / 0815808.24W	Y	FB	TF	212.90	17.38	AT/ABOVE 3000	AT 210K	
KEYW:RWY 9									
Runway Transition									
STING	245253.72N / 0814746.65W	Y		IF					
BUSBY	243318.77N / 0815102.39W	Y	FB	TF	188.51	19.74	AT/ABOVE 6000	AT/BELOW 220K	
SKINT	242742.91N / 0815052.68W	Y	FB	TF	179.05	05.58			
BEHAV	242747.48N / 0814315.83W	Y	FB	TF	089.35	06.95	AT/ABOVE 4000	AT 210K	
AKUNS	242753.01N / 0813300.93W	Y	FB	TF	089.40	09.35	AT/ABOVE 3000	AT 210K	
KEYW:RWY 27									

