

Flight Procedures Cover Page	Task Action: P-NOTAM	Task Type: IAP	Estimated Chart Date: 06/17/2021	APWS Task ID: 5E4213C98DE443F58C72B2860F3E01C4	APWS Project ID: 472D6CF469A6474CB77E5A7CDCFE1BDA
Procedure: RNAV GPS RWY 10 ORIG C		Enroute: NO	Specialist: Cannon, Brett		Agreement Number:
Airport ID: KUDD			Airport City: PALM SPRINGS		State: CA
Facility ID:	Facility Type:	Flight Inspection Remark Type:			
<div>Procedure Comments: P-NOTAM</div> <div>This Cancels FDC 0/7427</div> <div>Order 8260.3, chapter 2, New Circling Criteria Applied</div> <div>Contact Dave Teffeteller at 202-267-5177</div> <div>QUALITY 26 CHECKED</div>					

OLD

PALM SPRINGS, CALIFORNIA

AL-5848 (FAA)

19283

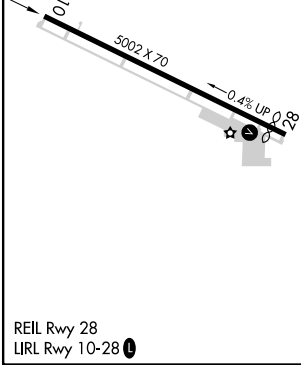
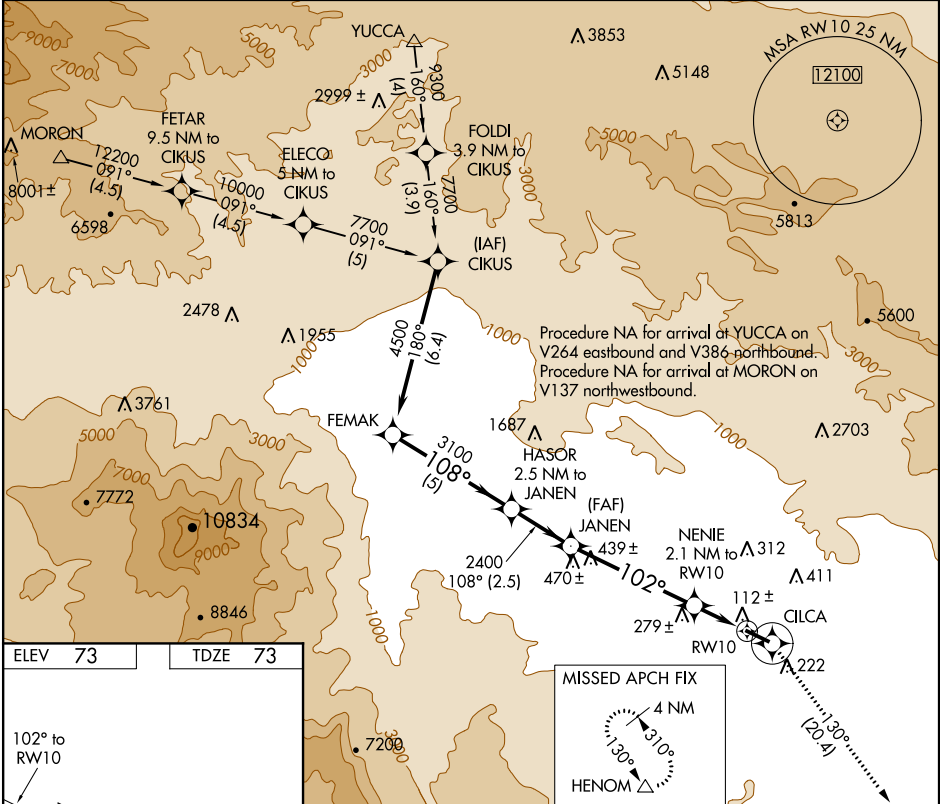
APP CRS	Rwy Idg	5002
102°	TDZE	73
	Apt Elev	73

RNAV (GPS) RWY 10

BERMUDA DUNES (UDD)

NA GPS or RNP-0.3 required. DME/DME RNP-0.3 NA. Use Jacqueline Cochran Rgnl altimeter setting.	MISSED APPROACH: Climb to 3700 direct CILCA and via 130° track to HENOM and hold.
--	---

TRM ASOS 118.325	SOCAL APP CON* 135.275 251.1	UNICOM 122.8 (CTAF) 0
----------------------------	--	--



FEMAK	HASOR 2.5 NM to JANEN	JANEN	NENIE 2.1 NM to RW10	CILCA	HENOM
4500	3100	2400	800	3700	130° tr
Procedure Turn NA	5 NM	2.5 NM	4.9 NM	2.1 NM	
CATEGORY	A	B	C	D	
LNAV MDA	480-1	407 (500-1)	480-1¼ 407 (500-1¼)	NA	
CIRCLING	700-1	627 (700-1)	700-1¾ 627 (700-1¾)	NA	

PALM SPRINGS, CALIFORNIA
Orig-B 25NOV04

33°45'N-116°16'W

RNAV (GPS) RWY 10

SW-3, 28 JAN 2021 to 25 FEB 2021

SW-3, 28 JAN 2021 to 25 FEB 2021

