



Flight Procedures Cover Page	Task Action: P-NOTAM	Task Type: IAP	Estimated Chart Date: 12/30/2021	APWS Task ID: 5E2F9C8A35C04334B540EF492DE03AF9	APWS Project ID: E4B9A12AABD5410D92F7A4EB3883610E
Procedure: RNAV (GPS) RWY 2 AMDT 0B		Enroute: NO	Specialist: Donkor, Kweku		Agreement Number:
Airport ID: KDKB			Airport City: DE KALB		State: IL
Facility ID:	Facility Type:	Flight Inspection Remark Type:			
<div> <div> Procedure Comments: P-NOTAM.   CANCELS FDC 0/5227.   ORDER 8260.3, CHAPTER 2, NEW CIRCLING CRITERIA APPLIED.   CONTACT: LONNIE EVERHART 405-954-4576/DAVID TEFFETELLER 202-267-5177. </div> <div>   </div> </div>					


WAAS CH <b>58109</b> <b>W02A</b>	APP CRS <b>021°</b>	Rwy Idg TDZE Apt Elev	<b>7026</b> <b>913</b> <b>914</b>
--	------------------------	-----------------------------	---

OLD

RNAV (GPS) RWY 2  
DE KALB TAYLOR MUNI (DKB)

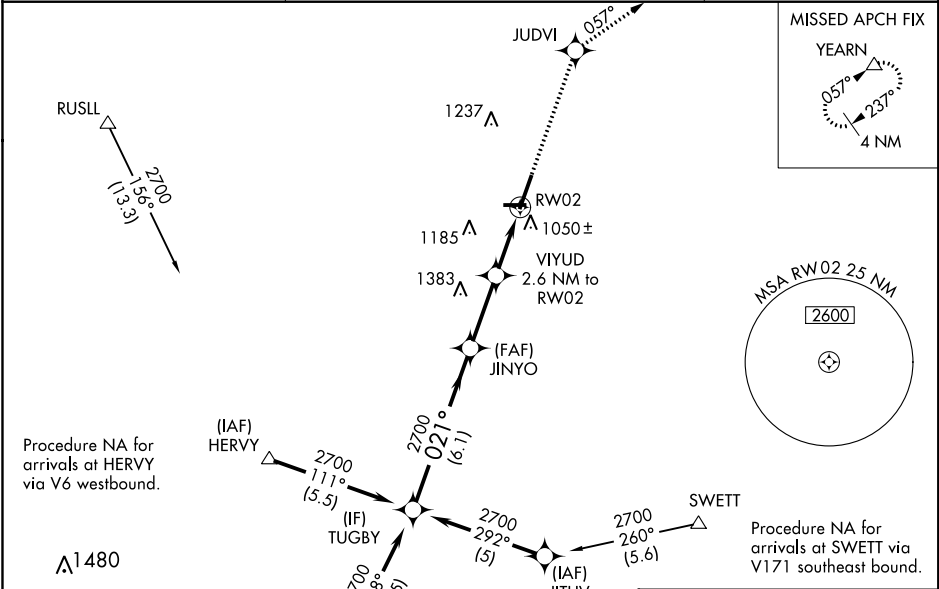
**⚠** Baro-VNAV NA when using Aurora altimeter setting. For uncompensated Baro-VNAV systems, LNAV/VNAV NA below -16°C (4°F) or above 47°C (116°F). DME/DME RNP-0.3 NA. VDP NA when using Aurora altimeter setting. When local altimeter setting not received, use Aurora altimeter setting and increase all DA 61 feet and all MDA 80 feet; increase all LPV and LNAV/VNAV visibilities, LNAV Cats C/D visibility, and Circling Cats C/D visibility ¼ mile. For inop MALSR, increase LPV all Cats visibility to 1.

**MALSR**



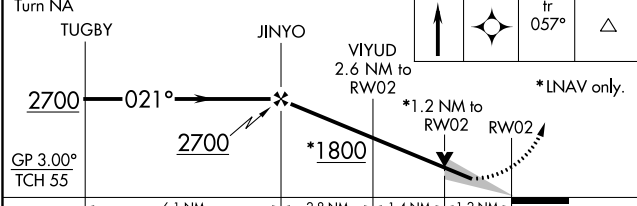
**MISSED APPROACH:**  
Climb to 3000 direct JUDVI and via 057° track to YEARN and hold.

AWOS-3 <b>119.075</b>	CHICAGO APP CON <b>133.5 349.0</b>	UNICOM <b>122.7 (CTAF) 0</b>
--------------------------	---------------------------------------	---------------------------------



ELEV 914	TDZE 913
----------	----------

REIL Rwy 9, 20 and 27  
MIRL Rwy 2-20 and 9-27

Procedure Turn NA				
				
CATEGORY	A	B	C	D
LPV DA	1207-½		294 (300-½)	
LNAV/VNAV DA	1360-1		447 (500-1)	
LNAV MDA	1360-½	447 (500-½)	1360-¾ 447 (500-¾)	1360-1 447 (500-1)
CIRCLING	1360-1 446 (500-1)	1480-1 566 (600-1)	1540-1¾ 626 (700-1¾)	1540-2 626 (700-2)

EC-3, 26 MAR 2020 to 23 APR 2020

EC-3, 26 MAR 2020 to 23 APR 2020

AIRPORT ID: KDKB  
NAME: DE KALB TAYLOR MUNI  
CITY: DE KALB  
STATE: ILLINOIS  
PROC: RNAV (GPS) RWY 2  
AMDT: ORIG-A  
NEW CIRCLING AREAS  
SCALE 1:100,000

