
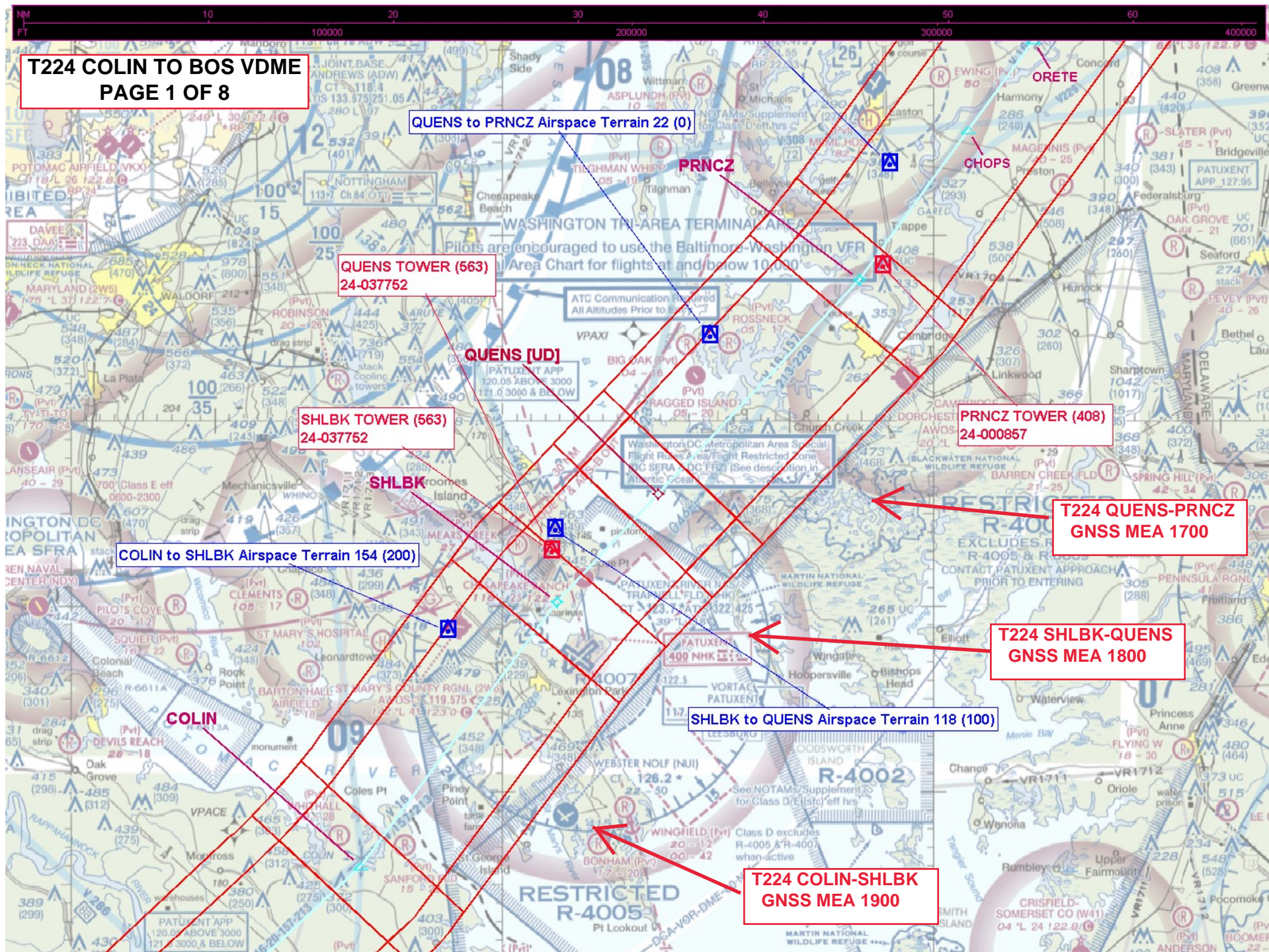


Flight Procedures Cover Page	Task Action: FLIGHT CHECK	Task Type: Segment	Estimated Chart Date: 02/23/2023	APWS Task ID: 5E10048400934CF5B2ABA15DD14CE939	APWS Project ID: 89EC6B85C4BA4C0C92956D41609709DC
Procedure: T 224 COLIN, VA to BOS VDM, MA		Enroute: YES	Specialist: Dugan, Joshua		Agreement Number:
Airport ID:			Airport City:		State:
Facility ID:	Facility Type:	Flight Inspection Remark Type: New FC Slot			
<p>Procedure Comments: AIRWAY STARTING POINT COLIN, VA 380559.23N/0763950.85W</p> <p>AIRSPACE DOCKET 21-AEA-22</p> <p>CONTACT ALLAN WILL 405-954-6103</p> <p>12/20/22: THIS IS A CORRECTED COPY OF THE FORM APPROVED ON 11/18/22.</p> <p>8260-2 YODER 1. CHANGED FAC 1 (ORW) MAG BRG FROM 43.95 TO 238.18</p> <p>01/04/23: THIS IS A CORRECTED COPY OF THE FORM APPROVED ON 11/18/22.</p> <p>8260-2 CREAM 1. ADDED V34 BACK TO FIX USE CANCELLATION PROJECT SLIPPED</p> <p>01/10/23: THIS IS A CORRECTED COPY OF THE FORM APPROVED ON 11/18/22.</p> <p>8260-2 AXEJA 1. ADDED AXEJA TO PROJECT CHANGING FROM CNF TO WP.</p> <p>01/13/23: THIS IS A CORRECTED COPY OF THE FORM APPROVED ON 11/18/22.</p> <p>1. 8260-16 COLIN-SHLBK SEGMENT UPDATED MOCA TO Y, MAA TO 11000 AND MEA TO 5000 - DUE TO ATC REQUEST</p>					



Digitally signed by
PABLO ORTIZ-JR
Jan 17, 2023

FIPC BASIC FORM						
PROCEDURE: T 224 COLIN, VA to BOS VDM, MA			AIRPORT NAME:		AIRPORT ID:	SPECIAL CONTROL NO: YG-10-112-22
FAC ID: T224		CITY:			ST: VA	ORIG CHART DATE: 02/23/2023
DFL TYPE: PROC/N	THIRD PARTY: <input type="checkbox"/> YES	EST. TIME ON SITE: 2.0	REIMB. NUMBER: AC0721	PTS TASK ID: 5E10048400934CF5B2ABA15DD14CE939		
PREFLIGHT NOTES						
REVIEWER: bob s pressler					DATE: 11/04/2022	
COMMENTS: Table Top Review. All -SAT. MOCA, MEA, GNSS at or above already established altitudes. Any Lower segments verified with ATC for Radar and Comms.					CHECK ONE: <input type="checkbox"/> FLT CK REQ <input checked="" type="checkbox"/> NFCR <input type="checkbox"/> REJECT <hr/> <div style="display: flex; justify-content: space-between; padding: 0 5px;"> YES NO </div>	
					CPV COMPLETE? <div style="display: flex; justify-content: space-between; padding: 0 5px;"> X </div>	
PROCEDURE RESULTS						
INSPECTION DATE: 11/04/2022	CREW #: VN137	N #:	INSTRUMENT PROCEDURE STATUS: <input checked="" type="checkbox"/> SAT <input type="checkbox"/> SAT W/CHANGES <input type="checkbox"/> UNSAT		ARINC CODING: <input type="checkbox"/> SAT <input type="checkbox"/> SAT/GOLD <input type="checkbox"/> UNSAT	
FLIGHT INSPECTOR SIGNATURE: bob s pressler @ 11/04/2022 09:39			PRINTED NAME: PRESSLER, ROBERT STEPHEN			NOTAM INITIATED? <input type="checkbox"/> YES <input checked="" type="checkbox"/> NO
FLIGHT INSPECTOR REMARKS: Table Top Review. All -SAT. MOCA, MEA, GNSS at or above already established altitudes. Any Lower segments verified with ATC for Radar and Comms.						
IN-FLIGHT OBSTACLE REPORT						
OBSTRUCTION ID #:	COORDINATES OR LOCATION:	GNSS ALTITUDE (MSL):	BAROMETRIC ALTITUDE (MSL):	HEIGHT ABOVE GROUND LEVEL:		



T224 COLIN TO BOS VDME
PAGE 1 OF 8

QUENS to PRNCZ Airspace Terrain 22 (0)

QUENS TOWER (563)
24-037752

QUENS [UD]

SHLBK TOWER (563)
24-037752

SHLBK

COLIN to SHLBK Airspace Terrain 154 (200)

COLIN

SHLBK to QUENS Airspace Terrain 118 (100)

T224 COLIN-SHLBK
GNSS MEA 1900

PRNCZ TOWER (408)
24-000857

T224 QUENS-PRNCZ
GNSS MEA 1700

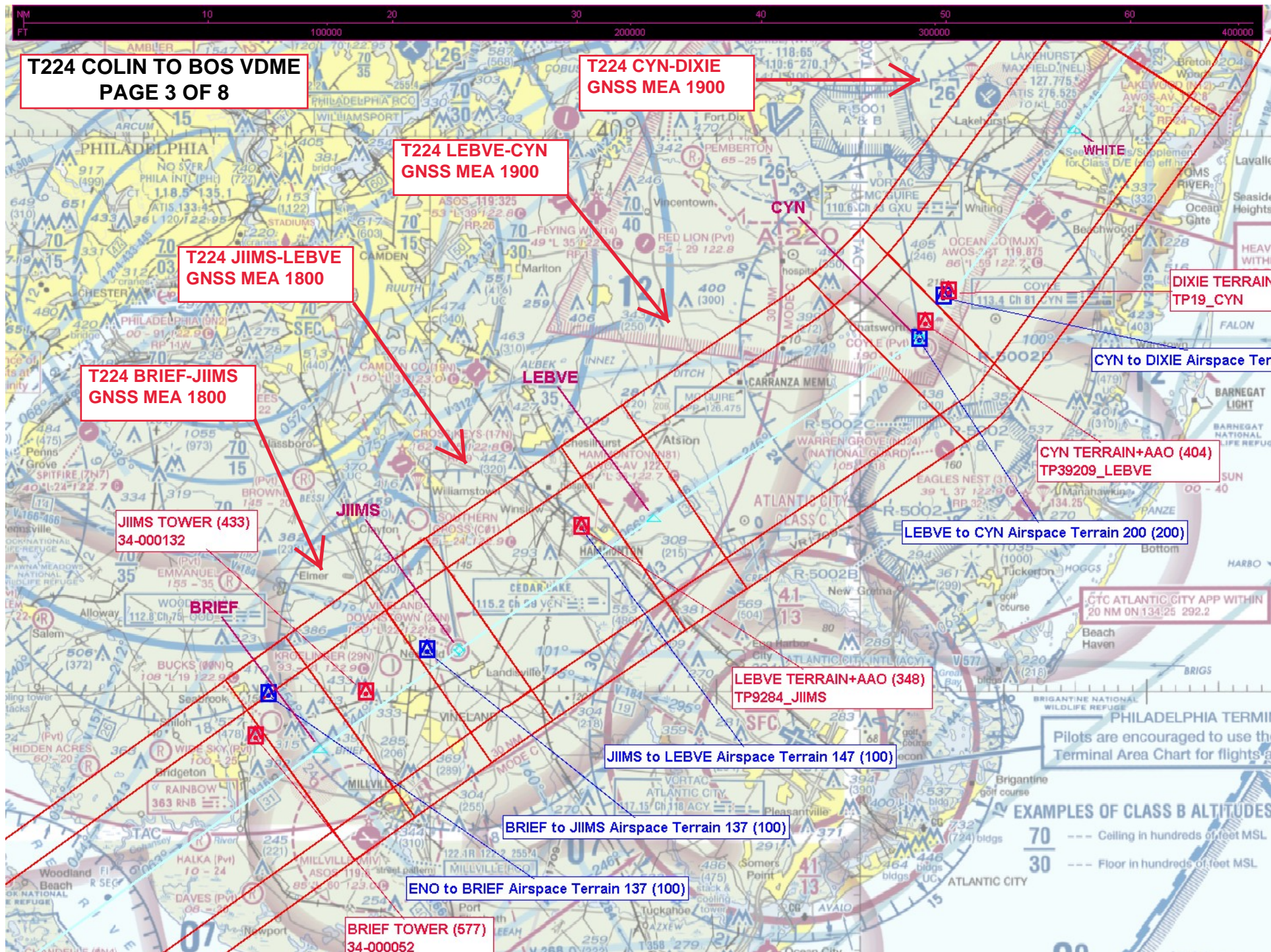
T224 SHLBK-QUENS
GNSS MEA 1800

**T224 ENO-BRIEF
GNSS MEA 2000**

ENO TOWER (524)
10-000148

T224 PRNCZ-ENO
GNSS MEA 1800

PRNCZ to ENO Airspace Terrain 82 (100)



T-224 COLIN TO BOS VDME PAGE 4 OF 8

T224 DIXIE-JFK
GNSS MEA 2000

DIXIE to JFK Airspace Terrain 305 (300)

JFK TOWER (609)
34-000643

T224 CYN-DIXIE
GNSS MEA 1900

DIXIE

WHITE

CAUTION:
HEAVY JETS OPERATING AT 2000' AND
3000' WITHIN 15 NM OF MC GUIRE (JBMDL) (WRI)
MC GUIRE APP 126.475

DIXIE TERRAIN+AAO (414)
TP19_CYN

CYN to DIXIE Airspace Terrain 213 (200)

T224 COLIN TO BOS VDME
PAGE 5 OF 8

**T224 CCC-KEYED
GNSS MEA 1900**

JFK to KEEPM Airspace Terrain 367 (400)

KEEPM BUILDING (604)
36-000454

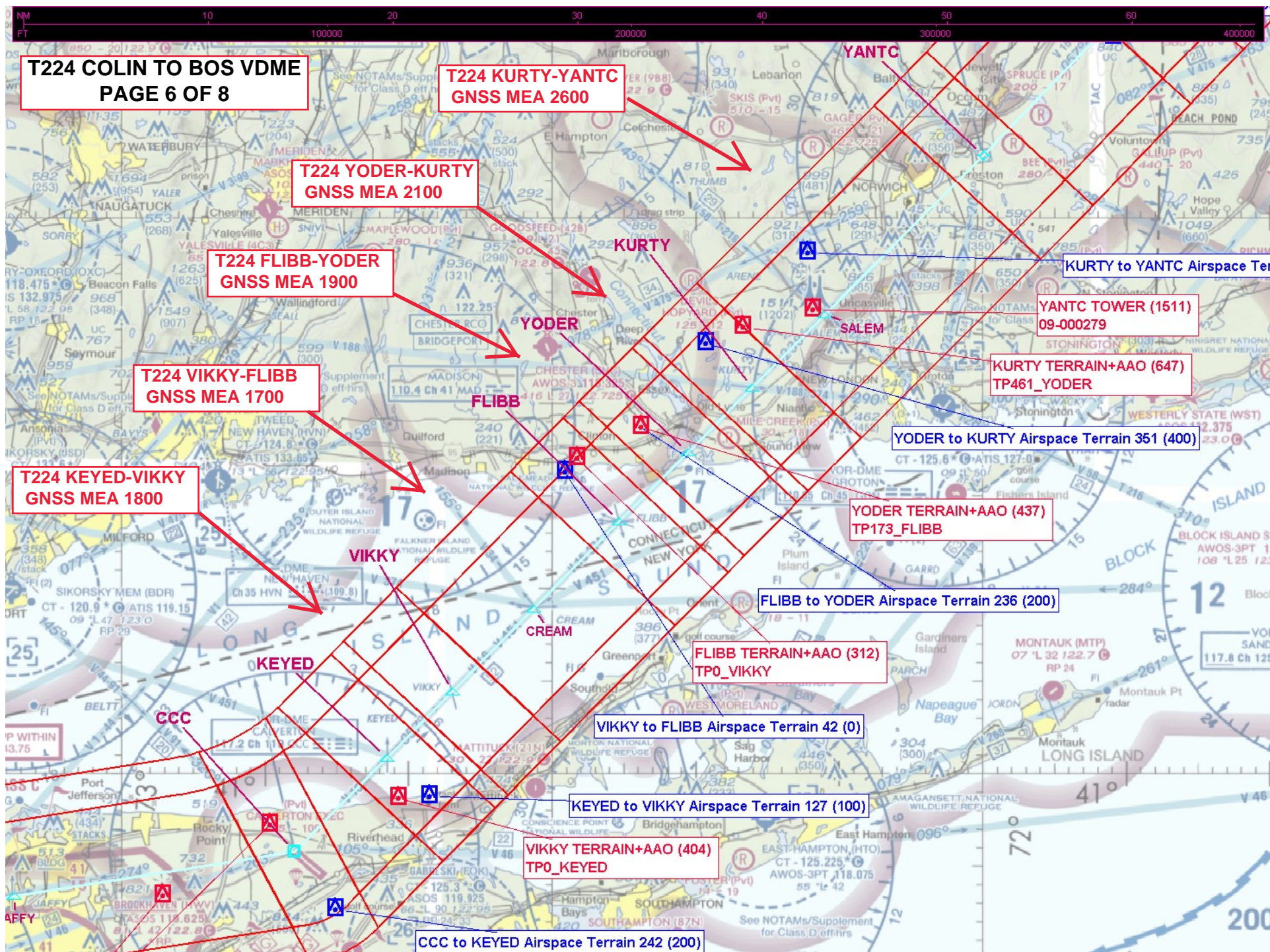
KEEPM to CCC Airspace Terrain 383 (400)

CCC TOWER (821)
36-001107

KEYED TERRAIN+AAO (447)
TP2047_CCC

T224 KEEP-CCC
GNSS MEA 2000

T224 JFK-KEEPM
GNSS MEA 2000



T-224 COLIN TO BOS VDME PAGE 7 OF 8

MILIS to BOS Airspace Terrain

WOONS to MILIS Airspace Terrain 541 (500)

T224 FOSTY-WOONS
GNSS MEA 2400

MILIS TANK (802)
44-000155

T224 JEWIT-FOSTY
GNSS MEA 2500

WOONS

FOSTY to WOO

T224 YANTC-JEWIT
GNSS MEA 2400

WOON
44-000

KURTY to YANTC Airspace Terrain 629 (600)

FOSTY TOWER (1069)
44-000083

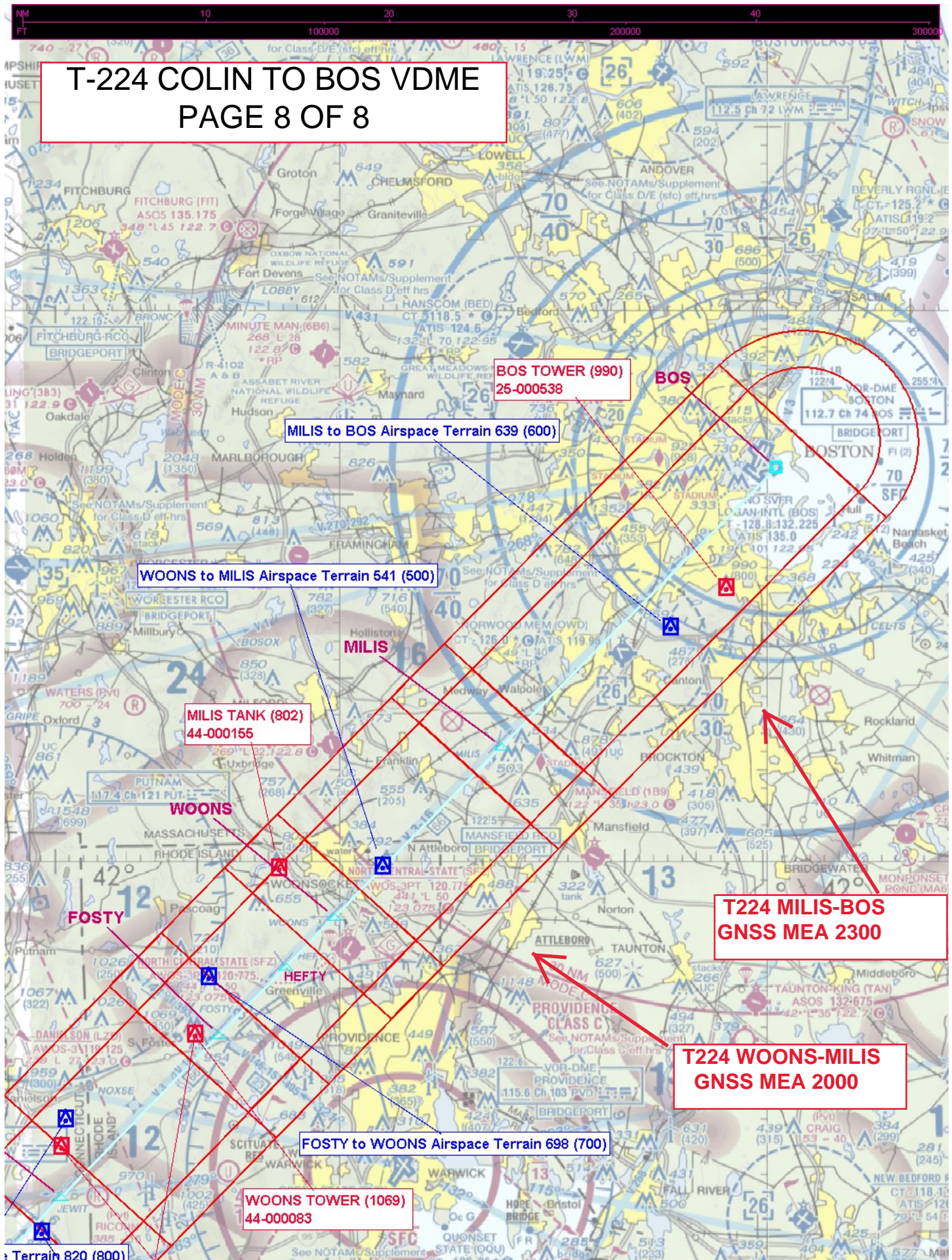
JEWIT to FOSTY Airspace Terrain 820 (800)

JEWIT TERRAIN+AAO (945)
TP339_YANTC

YANTC to JEWIT Airspace Terrain 688 (700)

T-224 COLIN TO BOS VDME

PAGE 8 OF 8





Federal Aviation Administration

Memorandum

Date: November 5, 2021

To: Michael R. Beckles, Acting Manager, Rules and Regulations Group,
AJV-P2

From: Matthew N. Cathcart, Manager, Operations Support Group,
Eastern Service Center, AJV-E2

Subject: ACTION: Airway Amendment/Establishment, Airspace Docket No.
21-AEA-22

The Operations Support Group, Eastern Service Center requests the following airway actions, Airspace Docket No. 21-AEA-22. These actions are in support of the Very High Frequency Omni-directional Range Minimum Operational Network Program, working with the Air Traffic Organization and system users to improve the efficiency of the National Airspace System. Action will be taken to remove ground based navigation dependencies and provide a modern RNAV route structure for both Air Traffic and its users through this and other rule making actions.

T-224 [AMENDED]	T-303 [NEW]
T-314 [AMENDED]	T-360 [NEW]
T-315 [AMENDED]	

The OSG, ESC recommends action be initiated for the listed airway actions with an effective date of November 3, 2022. The legal descriptions are indicated within the attachment; the changes are in bold, strikethrough indicates what is to be removed from the legal description and is shown on the attachment for clarity.

If you have any questions on this matter, please contact Melinda George, Support Specialist, Operations Support Group, Eastern Service Center at (404) 305-5610 or melinda.a.george@faa.gov.

Attachment:
Legal Description

cc: Paul Gallant
Margaret Flategraff



Federal Aviation Administration

Memorandum

Date: October 18, 2021
To:
From:
Prepared by: Steven Rager
Subject: T224 amend

T224 amend is part of the VOR MON Program to improve the efficiency of the NAS. Action will be taken to ground based navigation dependencies and provide a modern RNAV route structure for both Air Traffic and its users through this and other rule making actions.

T224 amend overlays a portion or portions of V16 from COLIN WAYPOINT to the BOS VOR/DME.

T224 amend adds from COLIN WAYPOINT to SHLBK WAYPOINT and QUENS WAYPOINT, then overlays V16 to BOS VOR/DME.

JIIMS WAYPOINT is being used in this route in place of VCN VOR/DME and is located at the VCN VOR/DME.

YANTC WAYPOINT is being used in this route in place of ORW VOR/DME 60 feet east of ORW VOR/DME.

T224 amend COLIN, VA to BOSTON, MA [Amended]

COLIN, VA	FIX	(lat. 38°05'59.23"N., long. 076°39'50.85"W.)
SHLBK, MD	WP	(lat. 38°20'16.21"N., long. 076°26'10.51"W.)
QUEENS, MD	WP	(lat. 38°26'04.59"N., long. 076°19'10.06"W.)
PRNCZ, MD	WP	(lat. 38°37'38.10"N., long. 076°05'08.20"W.)
CHOPS, MD	FIX	(lat. 38°45'41.81"N., long. 075°57'36.18"W.)
ORETE, MD	FIX	(lat. 38°50'32.12"N., long. 075°53'03.73"W.)
HEDGE, MD	FIX	(lat. 38°53'32.11"N., long. 075°50'14.46"W.)
RIDGY, MD	FIX	(lat. 38°56'34.71"N., long. 075°47'23.33"W.)
CANNY, DE	FIX	(lat. 39°03'39.92"N., long. 075°40'40.65"W.)
SMYRNA, DE (ENO)	VORTAC	(lat. 39°13'53.93"N., long. 075°30'57.49"W.)
BRIEF, NJ	FIX	(lat. 39°26'55.21"N., long. 075°07'39.69"W.)
JIIMS, NJ	WP	(lat. 39°32'15.62"N., long. 074°58'01.72"W.)
LEBVE, NJ	FIX	(lat. 39°39'25.01"N., long. 074°44'23.42"W.)
COYLE, NJ (CYN)	VORTAC	(lat. 39°49'02.42"N., long. 074°25'53.85"W.)
WHITE, NJ	FIX	(lat. 40°00'24.32"N., long. 074°15'04.61"W.)
DIXIE, NJ	FIX	(lat. 40°05'57.72"N., long. 074°09'52.17"W.)
MOVFA, NJ	FIX	(lat. 40°13'54.46"N., long. 074°03'58.46"W.)
KENNEDY, NY (JFK)	VOR/DME	(lat. 40°37'58.40"N., long. 073°46'17.00"W.)
KEEPM, NY	FIX	(lat. 40°50'14.77"N., long. 073°32'42.58"W.)
TRANZ, NY	FIX	(lat. 40°51'31.95"N., long. 073°22'30.80"W.)
JAFFY, NY	FIX	(lat. 40°53'24.08"N., long. 073°07'28.19"W.)
CALVERTON, NY (CCC)	VOR/DME	(lat. 40°55'46.63"N., long. 072°47'55.89"W.)
KEYED, NY	FIX	(lat. 41°00'51.45"N., long. 072°41'31.84"W.)
VIKKY, NY	FIX	(lat. 41°04'27.41"N., long. 072°36'58.72"W.)
CREAM, NY	FIX	(lat. 41°08'55.85"N., long. 072°31'18.32"W.)
FLIBB, CT	FIX	(lat. 41°13'37.34"N., long. 072°25'20.19"W.)
YODER, CT	FIX	(lat. 41°17'22.51"N., long. 072°20'32.79"W.)
KURTY, CT	FIX	(lat. 41°20'52.33"N., long. 072°16'04.28"W.)
SALEM, CT	FIX	(lat. 41°24'48.41"N., long. 072°11'01.29"W.)
YANTC, CT	WP	(lat. 41°33'22.81"N., long. 071°59'56.95"W.)
JEWIT, CT	FIX	(lat. 41°41'45.92"N., long. 071°49'33.18"W.)
FOSTY, RI	FIX	(lat. 41°50'35.46"N., long. 071°38'31.34"W.)
HEFTY, RI	FIX	(lat. 41°54'19.19"N., long. 071°33'50.39"W.)
WOONS, RI	FIX	(lat. 41°57'02.07"N., long. 071°30'25.34"W.)
MILIS, MA	FIX	(lat. 42°06'18.59"N., long. 071°18'41.62"W.)
BOSTON, MA (BOS)	VOR/DME	(lat. 42°21'26.82"N., long. 070°59'22.37"W.)



Federal Aviation Administration

Memorandum

Date: October 18, 2021
To:
From:
Prepared by: Steven Rager
Subject: T303

T303 is part of the VOR MON Program to improve the efficiency of the NAS. Action will be taken to ground based navigation dependencies and provide a modern RNAV route structure for both Air Traffic and its users through this and other rule making actions.

T303 overlays a portion of V1 from IRAKE WAYPOINT to the BOS VOR/DME.

KOHLs WAYPOINT is being used in this route in place of CVI VORTAC and is located .09NM southwest of CVI VORTAC.

OUTLA WAYPOINT is being used in this route in place of CCV VORTAC and is located .10NM SOUTH of CCV VORTAC.

TRPOD WAYPOINT is being used in the route in place of SBY VORTAC and is located .43NM south of SBY VORTAC.

T303 IRAKE, NC to BOSTON, MA [New]

IRAKE, NC	WP	(lat. 35°41'31.44"N., long. 077°20'25.44"W.)
ZAGGY, NC	FIX	(lat. 35°47'58.38"N., long. 077°16'01.21"W.)
KOHLs, NC	WP	(lat. 36°22'17.76"N., long. 076°52'21.48"W.)
EDTAJ, VA	FIX	(lat. 36°36'17.91"N., long. 076°34'23.35"W.)
PSALM, VA	FIX	(lat. 36°40'10.68"N., long. 076°29'22.33"W.)
DEEMS, VA	FIX	(lat. 36°44'31.54"N., long. 076°23'43.84"W.)
NORFOLK, VA (ORF)	VORTAC	(lat. 36°53'30.86"N., long. 076°12'01.18"W.)
OUTLA, VA	WP	(lat. 37°20'45.48"N., long. 075°59'54.08"W.)
FATOM, VA	FIX	(lat. 37°30'48.53"N., long. 075°58'32.77"W.)
JAMIE, VA	FIX	(lat. 37°36'20.58"N., long. 075°57'48.81"W.)
MAGGO, MD	FIX	(lat. 37°58'58.48"N., long. 075°44'01.39"W.)
TRPOD, MD	WP	(lat. 38°20'17.30"N., long. 075°30'28.27"W.)
WATERLOO, DE (ATR)	VOR/DME	(lat. 38°48'35.32"N., long. 075°12'40.76"W.)
PEAPS, DE	FIX	(lat. 39°02'30.90"N., long. 075°04'44.05"W.)
LEEAH, NJ	FIX	(lat. 39°15'39.27"N., long. 074°57'11.01"W.)
ANABL, NJ	WP	(lat. 39°30'15.98"N., long. 074°43'34.12"W.)
HOWIE, NJ	FIX	(lat. 39°34'57.82"N., long. 074°39'09.97"W.)
CRESI, NJ	FIX	(lat. 39°36'39.32"N., long. 074°37'34.66"W.)
COYLE, NJ (CYN)	VORTAC	(lat. 39°49'02.42"N., long. 074°25'53.85"W.)
WHITE, NJ	FIX	(lat. 40°00'24.32"N., long. 074°15'04.61"W.)
DIXIE, NJ	FIX	(lat. 40°05'57.72"N., long. 074°09'52.17"W.)
MOVFA, NJ	FIX	(lat. 40°13'54.46"N., long. 074°03'58.46"W.)
KENNEDY, NY (JFK)	VOR/DME	(lat. 40°37'58.40"N., long. 073°46'17.00"W.)
DEER PARK, NY (DPK)	VOR/DME	(lat. 40°47'30.30"N., long. 073°18'13.17"W.)
BELTT, NY	FIX	(lat. 41°03'48.61"N., long. 072°59'13.52"W.)
MADISON, CT (MAD)	VOR/DME	(lat. 41°18'49.90"N., long. 072°41'31.93"W.)
YODEL, CT	FIX	(lat. 41°23'25.37"N., long. 072°39'30.52"W.)
WEGOT, CT	FIX	(lat. 41°32'25.38"N., long. 072°35'32.19"W.)
HARTFORD, CT (HFD)	VOR/DME	(lat. 41°38'27.98"N., long. 072°32'50.70"W.)
DVANY, CT	FIX	(lat. 41°51'44.56"N., long. 072°18'11.25"W.)
GRAYM, MA	FIX	(lat. 42°06'04.27"N., long. 072°01'53.49"W.)
GRIPE, MA	FIX	(lat. 42°08'08.87"N., long. 071°54'32.47"W.)
BOSOX, MA	FIX	(lat. 42°12'06.79"N., long. 071°37'39.64"W.)
WHYBE, MA	FIX	(lat. 42°15'13.83"N., long. 071°24'59.53"W.)
BOSTON, MA (BOS)	VOR/DME	(lat. 42°21'26.82"N., long. 070°59'22.37"W.)



Federal Aviation Administration

Memorandum

Date: October 18, 2021
To:
From:
Prepared by: Steven Rager
Subject: T314 amend

T314 amend is part of the VOR MON Program to improve the efficiency of the NAS. Action will be taken to ground based navigation dependencies and provide a modern RNAV route structure for both Air Traffic and its users through this and other rule making actions.

T314 amend extends T314 from IGN VOR/DME to ENE VOR/DME.

T314 amend overlays a portion of V93 from IGN VOR/DME to SASHA WAYPOINT, and V292 from SASHA to BAF VORTAC.

PAWLN WAYPOINT is replacing PWL VOR/DME and is located 60 feet northwest of PWL VOR/DME.

T314 amend KINGSTON, NY to KENNEBUNK, ME [Amended]

KINGSTON, NY (IGN)	VOR/DME	(lat. 41°39'55.62"N., long. 073°49'20.01"W.)
PAWLN, NY	WP	(lat. 41°46'11.51"N., long. 073°36'02.64"W.)
STUBY, CT	FIX	(lat. 41°54'07.54"N., long. 073°26'14.04"W.)
SASHA, MA	FIX	(lat. 42°07'58.70"N., long. 073°08'55.39"W.)
TOMES, MA	FIX	(lat. 42°08'43.27"N., long. 072°58'01.44"W.)
BARNES, MA (BAF)	VORTAC	(lat. 42°09'43.05"N., long. 072°42'58.32"W.)
FAIDS, MA	FIX	(lat. 42°17'00.75"N., long. 072°30'33.91"W.)
PUDGY, MA	FIX	(lat. 42°19'38.52"N., long. 072°26'04.25"W.)
LAPEL, MA	WP	(lat. 42°27'40.92"N., long. 072°12'15.79"W.)
GARDNER, MA (GDM)	VOR/DME	(lat. 42°32'45.31"N., long. 072°03'29.48"W.)
JOHNZ, NH	FIX	(lat. 42°43'22.87"N., long. 071°40'55.80"W.)
MANCH, NH	WP	(lat. 42°52'12.03"N., long. 071°22'06.54"W.)
KHRIS, NH	FIX	(lat. 42°57'01.09"N., long. 071°15'35.56"W.)
RAYMY, NH	FIX	(lat. 43°03'36.89"N., long. 071°06'42.16"W.)
YUKES, NH	WP	(lat. 43°16'47.89"N., long. 070°48'47.74"W.)
KENNEBUNK, ME (ENE)	VOR/DME	(lat. 43°25'32.42"N., long. 070°36'48.69"W.)



Federal Aviation Administration

Memorandum

Date: October 18, 2021
To:
From:
Prepared by: Steven Rager
Subject: T315 amend

T315 amend is part of the VOR MON Program to improve the efficiency of the NAS. Action will be taken to ground based navigation dependencies and provide a modern RNAV route structure for both Air Traffic and its users through this and other rule making actions.

T315 amend extends T315 from JARLO WAYPOINT to BVT VOR/DME.

T315 amend overlays a portion or portions of V260 from JARLO WAYPOINT to FAK VORTAC, V16 from FAK VORTAC to DIXIE WAYPOINT, V229 from DIXIE WAYPOINT to HFD VOR/DME and T315 from HFD VOR/DME to BVT VOR/DME.

JARLO WAYPOINT is being used in place of HVQ VOR/DME and is located 1.8 feet north of HVQ VOR/DME.

SPACY WAYPOINT is replacing RNL VOR and is located 72 feet west of RNL VOR.

DBRAH WAYPOINT is replacing ROA VOR/DME and is located .05NM southeast of ROA VOR/DME.

EEGOR WAYPOINT is replacing BDR VOR/DME and is located 55 feet northeast of BDR VOR/DME.

T315 amend JARLO, WV to BURLINGTON, VT [Amended]

JARLO, WV	WP	(lat. 38°20'58.85"N., long. 081°46'11.68"W.)
MONTS, WV	FIX	(lat. 38°12'48.00"N., long. 081°24'55.89"W.)
GAULE, WV	FIX	(lat. 38°07'09.92"N., long. 081°10'25.77"W.)
LAFOR, WV	FIX	(lat. 38°04'53.03"N., long. 081°04'33.56"W.)
SPACY, WV	WP	(lat. 37°58'31.15"N., long. 080°48'24.34"W.)
VUTCU, WV	WP	(lat. 37°48'09.19"N., long. 080°36'12.45"W.)
TILFO, WV	WP	(lat. 37°43'53.59"N., long. 080°31'13.46"W.)
PEEBE, WV	FIX	(lat. 37°43'05.10"N., long. 080°30'16.97"W.)
CASTE, VA	FIX	(lat. 37°32'49.25"N., long. 080°18'20.31"W.)
DBRAH, VA	WP	(lat. 37°20'34.14"N., long. 080°04'10.75"W.)
SPNKS, VA	WP	(lat. 37°17'21.31"N., long. 079°33'17.14"W.)
KONRD, VA	WP	(lat. 37°20'39.83"N., long. 079°01'33.27"W.)
MATTO, VA	WP	(lat. 37°24'44.36"N., long. 078°33'03.77"W.)
STAFD, VA	WP	(lat. 37°26'26.91"N., long. 078°20'50.17"W.)
CRUMB, VA	FIX	(lat. 37°28'09.44"N., long. 078°08'27.69"W.)
FLAT ROCK, VA (FAK)	VORTAC	(lat. 37°31'42.63"N., long. 077°49'41.59"W.)
WAVES, VA	WP	(lat. 37°35'13.54"N., long. 077°26'52.03"W.)
TAPPA, VA	FIX	(lat. 37°58'12.66"N., long. 076°50'40.62"W.)
DUPEY, VA	FIX	(lat. 38°02'12.84"N., long. 076°45'06.47"W.)
COLIN, VA	FIX	(lat. 38°05'59.23"N., long. 076°39'50.85"W.)
SHLBK, MD	WP	(lat. 38°20'16.21"N., long. 076°26'10.51"W.)
QUENS, MD	WP	(lat. 38°26'04.59"N., long. 076°19'10.06"W.)
PRNCZ, MD	WP	(lat. 38°37'38.10"N., long. 076°05'08.20"W.)
GARED, MD	FIX	(lat. 38°41'40.41"N., long. 076°01'21.96"W.)
CHOPS, MD	FIX	(lat. 38°45'41.81"N., long. 075°57'36.18"W.)
COSHA, DE	WP	(lat. 38°57'57.57"N., long. 075°30'51.59"W.)
ATWEL, DE	FIX	(lat. 38°59'17.98"N., long. 075°28'20.28"W.)
GROUT, DE	FIX	(lat. 39°01'08.72"N., long. 075°24'50.99"W.)
DONIL, DE	FIX	(lat. 39°04'35.44"N., long. 075°18'18.92"W.)
LEEAH, NJ	FIX	(lat. 39°15'39.27"N., long. 074°57'11.01"W.)
TUBER, NJ	FIX	(lat. 39°21'55.92"N., long. 074°45'05.19"W.)
ATLANTIC CITY, NJ (ACY)	VORTAC	(lat. 39°27'21.15"N., long. 074°34'34.73"W.)
PANZE, NJ	FIX	(lat. 39°40'33.58"N., long. 074°10'05.45"W.)
DIXIE, NJ	FIX	(lat. 40°05'57.72"N., long. 074°09'52.17"W.)
MOVFA, NJ	FIX	(lat. 40°13'54.46"N., long. 074°03'58.46"W.)
KENNEDY, NY (JFK)	VOR/DME	(lat. 40°37'58.40"N., long. 073°46'17.00"W.)
KEEPM, NY	FIX	(lat. 40°50'14.77"N., long. 073°32'42.58"W.)

TRANZ, NY	FIX	(lat. 40°51'31.95"N., long. 073°22'30.80"W.)
PUGGS, NY	FIX	(lat. 40°56'27.65"N., long. 073°13'47.73"W.)
EEGOR, CT	WP	(lat. 41°09'38.94"N., long. 073°07'27.66"W.)
MILUM, CT	FIX	(lat. 41°13'21.78"N., long. 073°03'02.53"W.)
BAYYS, CT	FIX	(lat. 41°17'21.27"N., long. 072°58'16.73"W.)
DWAIN, CT	FIX	(lat. 41°17'58.03"N., long. 072°57'32.80"W.)
SEALL, CT	FIX	(lat. 41°23'33.74"N., long. 072°50'50.56"W.)
SNIVL, CT	FIX	(lat. 41°28'46.11"N., long. 072°44'34.90"W.)
HARTFORD, CT (HFD)	VOR/DME	(lat. 41°38'27.98"N., long. 072°32'50.70"W.)
DVANY, CT	FIX	(lat. 41°51'44.56"N., long. 072°18'11.25"W.)
DARTH, CT	WP	(lat. 41°56'55.86"N., long. 072°16'20.80"W.)
WITNY, MA	FIX	(lat. 42°02'57.82"N., long. 072°14'11.96"W.)
SPENO, MA	FIX	(lat. 42°16'48.55"N., long. 072°09'14.70"W.)
GARDNER, MA (GDM)	VOR/DME	(lat. 42°32'45.31"N., long. 072°03'29.48"W.)
KEYNN, NH	WP	(lat. 42°47'39.99"N., long. 072°17'30.35"W.)
JAMMA, VT	WP	(lat. 43°16'11.87"N., long. 072°35'10.63"W.)
EBERT, VT	WP	(lat. 43°32'58.08"N., long. 072°45'42.43"W.)
MUDDI, VT	FIX	(lat. 43°44'39.85"N., long. 072°51'26.92"W.)
BURLINGTON, VT (BTV)	VOR/DME	(lat. 44°23'49.58"N., long. 073°10'57.48"W.)



Federal Aviation Administration

Memorandum

Date: October 18, 2021
To:
From:
Prepared by: Steven Rager
Subject: T360

T360 is part of the VOR MON Program to improve the efficiency of the NAS. Action will be taken to ground based navigation dependencies and provide a modern RNAV route structure for both Air Traffic and its users through this and other rule making actions.

T360 extends from SPACY WAYPOINT to WAVES WAYPOINT.

T360 is an overlay of portions of V290 from SPACY WAYPOINT to ARVON WAYPOINT. The portions that are overlays are between SPACY WAYPOINT and OBEPE WAYPOINT and also from ROMAN WAYPOINT to ARVON WAYPOINT.

T360 extends southeast from ARVON WAYPOINT to WAVES WAYPOINT.

SPACY WAYPOINT is replacing RNL VOR and is located 73 feet west of RNL VOR.

T360 SPACY, WV to WAVES, VA [New]

SPACY, WV	WP	(lat. 37°58'31.15"N., long. 080°48'24.34"W.)
FRETT, WV	WP	(lat. 37°57'38.23"N., long. 080°25'25.03"W.)
NATTS, WV	FIX	(lat. 37°56'47.15"N., long. 080°04'52.86"W.)
BOOME, VA	FIX	(lat. 37°54'59.80"N., long. 079°25'46.25"W.)
OBEPE, VA	FIX	(lat. 37°54'23.03"N., long. 079°13'21.04"W.)
ROMAN, VA	FIX	(lat. 37°48'12.67"N., long. 078°46'03.24"W.)
BRAIL, VA	FIX	(lat. 37°44'24.08"N., long. 078°32'52.00"W.)
ARVON, VA	FIX	(lat. 37°41'13.95"N., long. 078°21'58.75"W.)
WAVES, VA	WP	(lat. 37°35'13.54"N., long. 077°26'52.03"W.)



Federal Aviation Administration

Memorandum

Date: April 4, 2022
To:
From:
Prepared by: Steven Rager
Subject: T315 amend

T315 amend is part of the VOR MON Program to improve the efficiency of the NAS. Action will be taken to ground based navigation dependencies and provide a modern RNAV route structure for both Air Traffic and its users through this and other rule making actions.

T315 amend extends T315 from JARLO WAYPOINT to BVT VOR/DME.

T315 amend overlays a portion or portions of V260 from JARLO WAYPOINT to FAK VORTAC, V16 from FAK VORTAC to DIXIE WAYPOINT, V229 from DIXIE WAYPOINT to HFD VOR/DME and T315 from HFD VOR/DME to BVT VOR/DME.

JARLO WAYPOINT is being used in place of HVQ VOR/DME and is located 1.8 feet north of HVQ VOR/DME.

SHANE WAYPOINT is replacing RNL VOR and is located 72 feet west of RNL VOR.

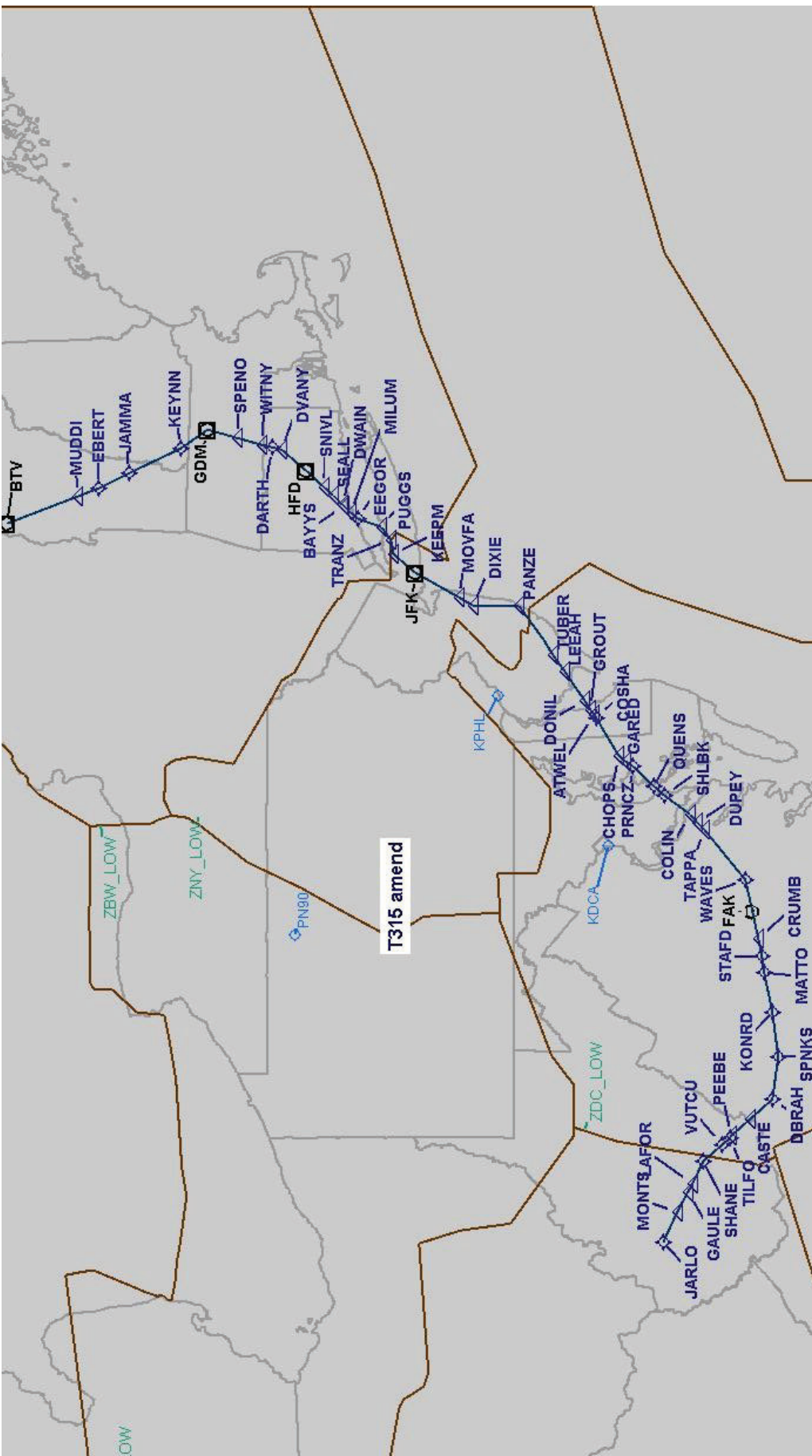
DBRAH WAYPOINT is replacing ROA VOR/DME and is located .05NM southeast of ROA VOR/DME.

EEGOR WAYPOINT is replacing BDR VOR/DME and is located 55 feet northeast of BDR VOR/DME.

T315 amend JARLO, WV to BURLINGTON, VT [Amended]

JARLO, WV	WP	(lat. 38°20'58.85"N., long. 081°46'11.68"W.)
MONTS, WV	FIX	(lat. 38°12'48.00"N., long. 081°24'55.89"W.)
GAULE, WV	FIX	(lat. 38°07'09.92"N., long. 081°10'25.77"W.)
LAFOR, WV	FIX	(lat. 38°04'53.03"N., long. 081°04'33.56"W.)
SHANE, WV	WP	(lat. 37°58'31.15"N., long. 080°48'24.34"W.)
VUTCU, WV	WP	(lat. 37°48'09.19"N., long. 080°36'12.45"W.)
TILFO, WV	WP	(lat. 37°43'53.59"N., long. 080°31'13.46"W.)
PEEBE, WV	FIX	(lat. 37°43'05.10"N., long. 080°30'16.97"W.)
CASTE, VA	FIX	(lat. 37°32'49.25"N., long. 080°18'20.31"W.)
DBRAH, VA	WP	(lat. 37°20'34.14"N., long. 080°04'10.75"W.)
SPNKS, VA	WP	(lat. 37°17'21.31"N., long. 079°33'17.14"W.)
KONRD, VA	WP	(lat. 37°20'39.83"N., long. 079°01'33.27"W.)
MATTO, VA	WP	(lat. 37°24'44.36"N., long. 078°33'03.77"W.)
STAED, VA	WP	(lat. 37°26'26.91"N., long. 078°20'50.17"W.)
CRUMB, VA	FIX	(lat. 37°28'09.44"N., long. 078°08'27.69"W.)
FLAT ROCK, VA (FAK)	VORTAC	(lat. 37°31'42.63"N., long. 077°49'41.59"W.)
WAVES, VA	WP	(lat. 37°35'13.54"N., long. 077°26'52.03"W.)
TAPPA, VA	FIX	(lat. 37°58'12.66"N., long. 076°50'40.62"W.)
DUPEY, VA	FIX	(lat. 38°02'12.84"N., long. 076°45'06.47"W.)
COLIN, VA	FIX	(lat. 38°05'59.23"N., long. 076°39'50.85"W.)
SHLBK, MD	WP	(lat. 38°20'16.21"N., long. 076°26'10.51"W.)
QUENS, MD	WP	(lat. 38°26'04.59"N., long. 076°19'10.06"W.)
PRNCZ, MD	WP	(lat. 38°37'38.10"N., long. 076°05'08.20"W.)
GARED, MD	FIX	(lat. 38°41'40.41"N., long. 076°01'21.96"W.)
CHOPS, MD	FIX	(lat. 38°45'41.81"N., long. 075°57'36.18"W.)
COSHA, DE	WP	(lat. 38°57'57.57"N., long. 075°30'51.59"W.)
ATWEL, DE	FIX	(lat. 38°59'17.98"N., long. 075°28'20.28"W.)
GROUT, DE	FIX	(lat. 39°01'08.72"N., long. 075°24'50.99"W.)
DONIL, DE	FIX	(lat. 39°04'35.44"N., long. 075°18'18.92"W.)
LEEAH, NJ	FIX	(lat. 39°15'39.27"N., long. 074°57'11.01"W.)
TUBER, NJ	FIX	(lat. 39°21'55.92"N., long. 074°45'05.19"W.)
ATLANTIC CITY, NJ (ACY)	VORTAC	(lat. 39°27'21.15"N., long. 074°34'34.73"W.)
PANZE, NJ	FIX	(lat. 39°40'33.58"N., long. 074°10'05.45"W.)
DIXIE, NJ	FIX	(lat. 40°05'57.72"N., long. 074°09'52.17"W.)
MOVFA, NJ	FIX	(lat. 40°13'54.46"N., long. 074°03'58.46"W.)
KENNEDY, NY (JFK)	VOR/DME	(lat. 40°37'58.40"N., long. 073°46'17.00"W.)
KEEPM, NY	FIX	(lat. 40°50'14.77"N., long. 073°32'42.58"W.)

TRANZ, NY	FIX	(lat. 40°51'31.95"N., long. 073°22'30.80"W.)
PUGGS, NY	FIX	(lat. 40°56'27.65"N., long. 073°13'47.73"W.)
EEGOR, CT	WP	(lat. 41°09'38.94"N., long. 073°07'27.66"W.)
MILUM, CT	FIX	(lat. 41°13'21.78"N., long. 073°03'02.53"W.)
BAYYS, CT	FIX	(lat. 41°17'21.27"N., long. 072°58'16.73"W.)
DWAIN, CT	FIX	(lat. 41°17'58.03"N., long. 072°57'32.80"W.)
SEALL, CT	FIX	(lat. 41°23'33.74"N., long. 072°50'50.56"W.)
SNIVL, CT	FIX	(lat. 41°28'46.11"N., long. 072°44'34.90"W.)
HARTFORD, CT (HFD)	VOR/DME	(lat. 41°38'27.98"N., long. 072°32'50.70"W.)
DVANY, CT	FIX	(lat. 41°51'44.56"N., long. 072°18'11.25"W.)
DARTH, CT	WP	(lat. 41°56'55.86"N., long. 072°16'20.80"W.)
WITNY, MA	FIX	(lat. 42°02'57.82"N., long. 072°14'11.96"W.)
SPENO, MA	FIX	(lat. 42°16'48.55"N., long. 072°09'14.70"W.)
GARDNER, MA (GDM)	VOR/DME	(lat. 42°32'45.31"N., long. 072°03'29.48"W.)
KEYNN, NH	WP	(lat. 42°47'39.99"N., long. 072°17'30.35"W.)
JAMMA, VT	WP	(lat. 43°16'11.87"N., long. 072°35'10.63"W.)
EBERT, VT	WP	(lat. 43°32'58.08"N., long. 072°45'42.43"W.)
MUDDI, VT	FIX	(lat. 43°44'39.85"N., long. 072°51'26.92"W.)
BURLINGTON, VT (BTV)	VOR/DME	(lat. 44°23'49.58"N., long. 073°10'57.48"W.)





Federal Aviation Administration

Memorandum

Date: April 4, 2022
To:
From:
Prepared by: Steven Rager
Subject: T360

T360 is part of the VOR MON Program to improve the efficiency of the NAS. Action will be taken to ground based navigation dependencies and provide a modern RNAV route structure for both Air Traffic and its users through this and other rule making actions.

T360 extends from SHANE WAYPOINT to WAVES WAYPOINT.

T360 is an overlay of portions of V290 from SHANE WAYPOINT to ARVON WAYPOINT. The portions that are overlays are between SHANE WAYPOINT and OBEPE WAYPOINT and also from ROMAN WAYPOINT to ARVON WAYPOINT.

T360 extends southeast from ARVON WAYPOINT to WAVES WAYPOINT.

SHANE WAYPOINT is replacing RNL VOR and is located 72 feet west of RNL VOR.

T360 SHANE, WV to WAVES, VA

SHANE, WV	WP	(lat. 37°58'31.15"N., long. 080°48'24.34"W.)
FRETT, WV	WP	(lat. 37°57'38.23"N., long. 080°25'25.03"W.)
NATTS, WV	FIX	(lat. 37°56'47.15"N., long. 080°04'52.86"W.)
BOOME, VA	FIX	(lat. 37°54'59.80"N., long. 079°25'46.25"W.)
OBEPE, VA	FIX	(lat. 37°54'23.03"N., long. 079°13'21.04"W.)
ROMAN, VA	FIX	(lat. 37°48'12.67"N., long. 078°46'03.24"W.)
BRAIL, VA	FIX	(lat. 37°44'24.08"N., long. 078°32'52.00"W.)
ARVON, VA	FIX	(lat. 37°41'13.95"N., long. 078°21'58.75"W.)
WAVES, VA	WP	(lat. 37°35'13.54"N., long. 077°26'52.03"W.)

