

| | | | | | |
|---|-------------------------|--------------------------------|-------------------------------------|---|--|
| Flight Procedures Cover Page | Task Action: P-NOTAM | Task Type: IAP | Estimated Chart Date: 03/25/2021 | APWS Task ID: 5D3239859C4A42068A19D8A5851E55B6 | APWS Project ID: F4F6505E77B94FC8A872D2B9970D336D |
| Procedure: RNAV (GPS) RWY 4 AMDT 0B | | Enroute: NO | Specialist: Lafferty, James | | Agreement Number: |
| Airport ID: KSWW | | | Airport City: SWEETWATER | | State: TX |
| Facility ID: | Facility Type: | Flight Inspection Remark Type: | | | |
| <div> <div>Procedure Comments:</div> <div> P-NOTAM This Cancels FDC 0/7008 Order 8260.3, chapter 2, New Circling Criteria Applied Contact Dave Teffeteller at 202-267-5177 </div> <div> <div>QUALITY</div> <div>45</div> <div>CHECKED</div> </div> </div> | | | | | |

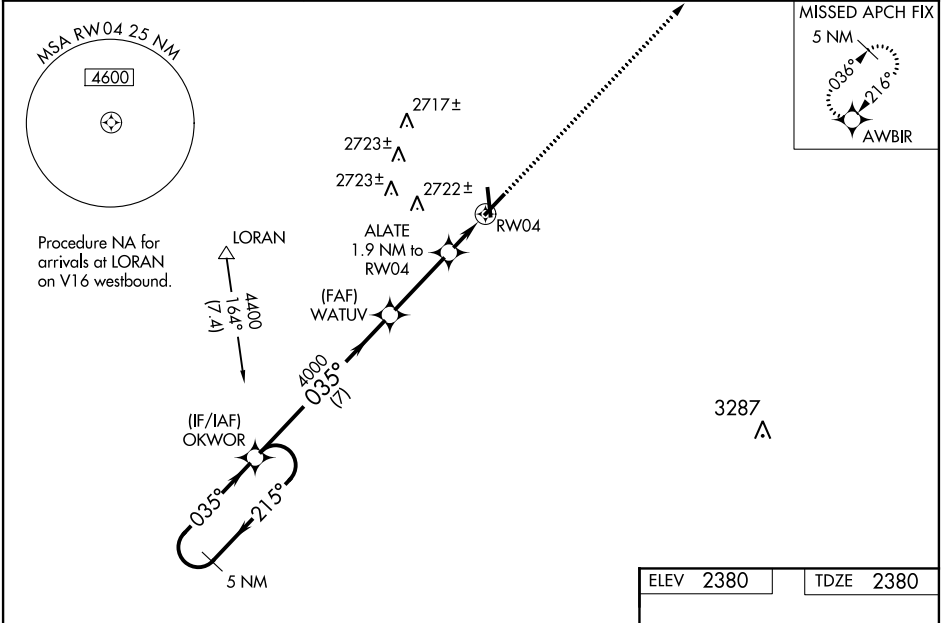
| | | |
|--|------------------------|---|
| WAAS CH 72925 W04A | APP CRS 035° | Rwy Idg 5658 TDZE 2380 Apt Elev 2380 |
|--|------------------------|---|

RNAV (GPS) RWY 4
SWEETWATER/AVENGER FIELD (SWW)

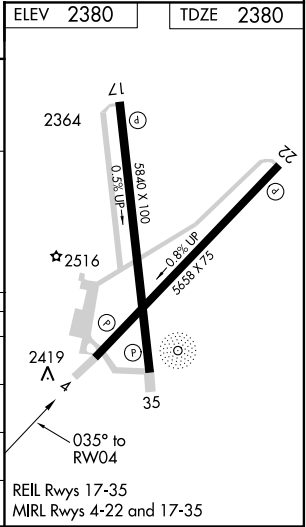
⚠ Baro-VNAV NA when using Snyder altimeter setting. For uncompensated Baro-VNAV systems, LNAV/VNAV NA below -19°C (-2°F) or above 29°C (84°F). DME/DME RNP-0.3 NA. Visibility reduction by helicopters NA. When local altimeter setting not received, use Snyder altimeter setting and increase all DA 72 feet and all MDA 80 feet. Increase LPV visibility all Cats ½ mile. Increase LNAV/VNAV visibility all Cats ¼ mile and LNAV visibility Cats C and D ½ mile. When VGSI inop, Straight-in/Circling Rwy 4 procedure NA at night. When VGSI inop, Circling Rwy 17 and 22 NA at night.

MISSED APPROACH:
Climb to 4400 direct AWBIR and hold.

| | | |
|--------------------------|---------------------------------------|-------------------------------|
| AWOS-3 119.025 | ABILENE APP CON 127.2 282.3 | UNICOM 122.8 (CTAF) |
|--------------------------|---------------------------------------|-------------------------------|



| | | | | | |
|----------------------|--------------------|------------|---|----------------------|------------|
| 5 NM Holding Pattern | | OKWOR | | 4400 | AWBIR |
| 4400 ← 215° | | → 035° | | 4000 | *LNAV only |
| GS 3.00° TCH 40 | | 035° | | 4000 | |
| | | WATUV 4000 | | ALATE 1.9 NM to RW04 | |
| | | 7 NM | | 3.1 NM | |
| | | | | 1.9 NM | |
| CATEGORY | A | B | C | D | |
| LPV DA | 2630-1 | | 250 (300-1) | | |
| LNAV/VNAV DA | 2727-1 1/8 | | 347 (400-1 1/8) | | |
| LNAV MDA | 2820-1 440 (500-1) | | 2820-1 1/4 440 (500-1 1/4) | | |
| CIRCLING | 2880-1 500 (500-1) | | 2880-1 1/2 500 (500-1 1/2) 2940-2 560 (600-2) | | |



SC-2, 05 FEB 2015 to 05 MAR 2015

SC-2, 05 FEB 2015 to 05 MAR 2015

