

Flight Procedures Cover Page	Task Action: P-NOTAM	Task Type: IAP	Estimated Chart Date: 12/02/2021	APWS Task ID: 5D5133D488C74D10B8D2D171694CCA3F	APWS Project ID: CC11E77C7B4D431D9DE46EE89F1E2C0C
Procedure: ILS OR LOC RWY 9R AMDT 11E		Enroute: NO	Specialist: Martinez, Rafael		Agreement Number:
Airport ID: KTMB		Airport City: MIAMI		State: FL	
Facility ID:	Facility Type:	Flight Inspection Remark Type:			
<p>Procedure Comments:</p> <p>P-NOTAM.</p> <p>THIS CANCELS FDC 0/4006.</p> <p>ORDER 8260.3, CHAPTER 2, NEW CIRCLING CRITERIA APPLIED.</p> <p>CONTACT: LONNIE EVERHART 405-954-4576/DAVID TEFFETELLER 202-267-5177.</p>					



LOC I-TMB 108.7	APP CRS 093°	Rwy Idg 6000 TDZE 10 Apt Elev 10
---------------------------	------------------------	---

ILS or LOC RWY 9R
MIAMI EXEC (TMB)

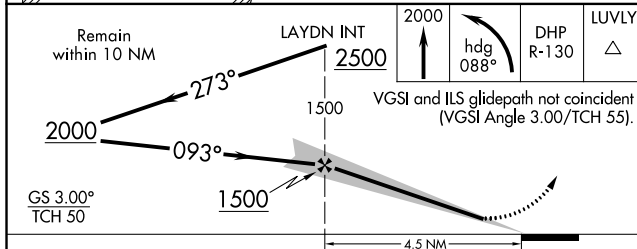
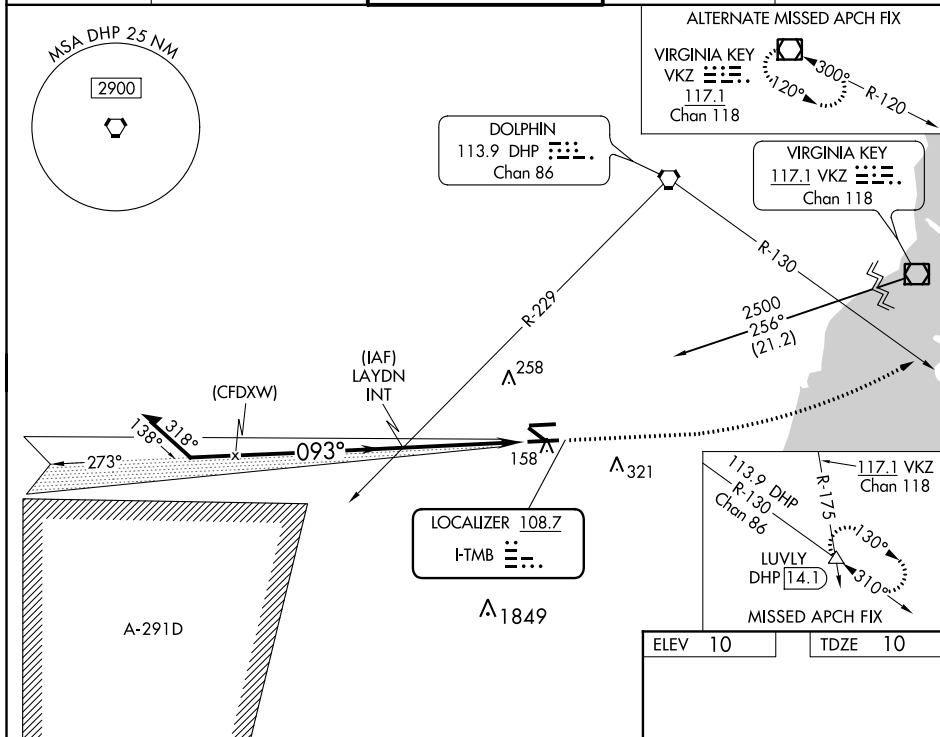
▼
▲

Circling Rwy 13, 31 NA at night. For inop ALS when using Miami Intl altimeter setting, increase Cat C/D visibility to 1 3/8 SM. When local altimeter setting not received, use Miami Intl altimeter setting and increase S-ILS 9R DA to 237 feet and all MDA 40 feet, increase S-LOC 9R Cat C/D visibility 1/8 SM.

MALSR
A5

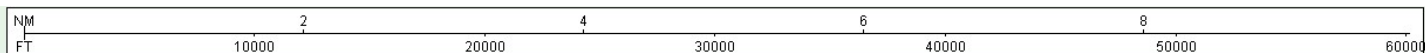
MISSED APPROACH: Climb to 2000 then left turn on heading 088° and DHP VORTAC R-130 to LUVLY INT/DHP 14.1 DME and hold.

ATIS 124.0	MIAMI APP CON 125.5 354.1	TAMiami TOWER ★ 118.9 (CTAF) 0	GND CON 121.7	CLNC DEL 133.0
----------------------	-------------------------------------	---	-------------------------	--------------------------



ELEV 10	TDZE 10
<p>5003 X 150</p> <p>27R</p> <p>27L</p> <p>6000 X 150</p> <p>093° 4.5 NM from FAF</p>	
REIL Rwy 13 HIRL Rwy 9R-27L MIRL Rwy 9L-27R MIRL Rwy 13-31	
FAF to MAP 4.5 NM	
Knots	60 90 120 150 180
Min:Seq	4:30 3:00 2:15 1:48 1:30

CATEGORY	A	B	C	D
S-ILS 9R	210-1/2 200 (200-1/2)			
S-LOC 9R	460-1/2	450 (500-1/2)	460-7/8	450 (500-7/8)
CIRCLING	460-1	450 (500-1)	460-1 1/2	640-2



KTMB
MIAMI EXECUTIVE
MIAMI, FL
ILS OR LOC RWY 9R, AMDT 11E
CIRCLING 1:100,000

