

Flight Procedures Cover Page	Task Action: P-NOTAM	Task Type: IAP	Estimated Chart Date: 10/31/2024	APWS Task ID: 5D4D018027B246DFAEFE6916383222BD	APWS Project ID: 4C1FC02347CE4730A3119F4420C9D1C3
Procedure: RNAV (GPS) RWY 35 AMDT 0C		Enroute: NO	Specialist: Johnson, Timothy		Agreement Number:
Airport ID: KFDR			Airport City: FREDERICK		State: OK
Facility ID:	Facility Type:	Flight Inspection Remark Type:			
<div>Procedure Comments: P-NOTAM.</div> <div>ACTIVE DATA USED.</div> <div>Processed IAW Technical Support Group (AJF-17) Memo dated 07/07/2021, Guidance for Procedural Changes Requiring Flight Inspection/Validation.</div> <div>CONTACT: CASIMIR TABAKA (405) 954-7931.</div> <div><div>QUALITY 41 CHECKED</div><div>QUALITY 32 CHECKED <div>Digitally signed by PABLO ORTIZ-JR Jul 05, 2024</div></div></div>					

WAAS CH 56419 W35A	APP CRS 353°	Rwy Idg 6099 TDZE 1238 Apt Elev 1258
--	------------------------	---

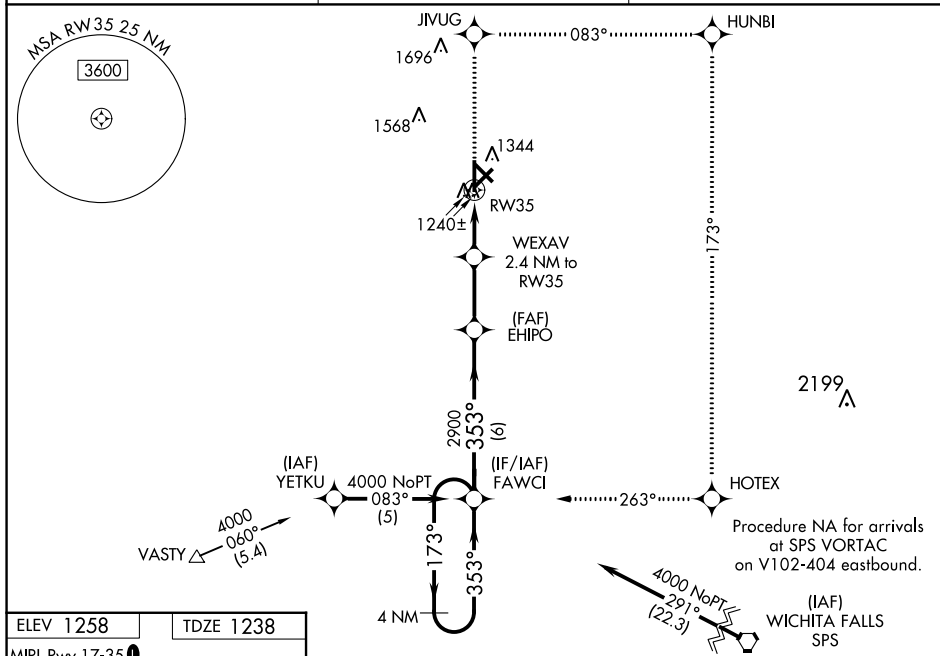
RNAV (GPS) RWY 35
FREDERICK RGNL (FDR)

RNP APCH-GPS.

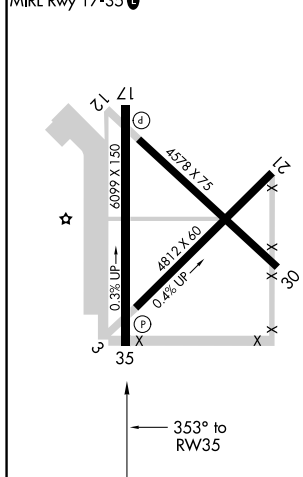
A For uncompensated Baro-VNAV systems, LNAV/VNAV NA below -17°C or above 46°C. Baro-VNAV and VDP NA when using Vernon altimeter setting. When local altimeter setting not received, use Vernon altimeter setting: increase LPV DA to 1478 feet; increase LNAV/VNAV DA to 1540 feet; increase all MDAs 40 feet and visibility LNAV Cat C ¼ SM and Circling Cat D ½ SM. Night landing: Rwy 3, 12, 17, 21, 30, NA.

MISSED APPROACH: Climb to 4000
direct JIVUG and right turn on track
083° to HUNBI and right turn on track
173° to HOTEX and right turn on track
263° to FAWCI and hold.

ASOS 132.675	ALTUS APP CON ★ 125.1 353.7	UNICOM 123.05 (CTAF) 0
------------------------	---------------------------------------	----------------------------------



ELEV 1258	TDZE 1238
MIRL Rwy 17-35	



CATEGORY		A	B	C	D
LPV	DA	1438- ³ / ₄ 200 (200- ³ / ₄)			
LNAV/ VNAV	DA	1500-1 262 (300-1)			
LNAV	MDA	1600-1 362 (400-1)			1600-1 ¹ / ₄ 362 (400-1 ¹ / ₄)
CIRCLING		1700-1 442 (500-1)	1720-1 462 (500-1)	1880-1 ³ / ₄ 622 (700-1 ³ / ₄)	1900-2 642 (700-2)

FREDERICK, OKLAHOMA

Orig-B 06OCT22

34°21'N-98°59'W

FREDERICK RGNI (FDR)

RNAV (GPS) RWY 35

SC-1, 22 FEB 2024 to 21 MAR 2024