

Flight Procedures Cover Page	Task Action: P-NOTAM	Task Type: IAP	Estimated Chart Date: 09/09/2021	APWS Task ID: 5CF17AF0A1204F9793CBAED89F8CE25A	APWS Project ID: 7BC53ACD9518464AA9E9C404BD908201
Procedure: RNAV (GPS) RWY 34 AMDT 2A		Enroute: NO	Specialist: Moore, Frank		Agreement Number:
Airport ID: KEET			Airport City: ALABASTER		State: AL
Facility ID:	Facility Type:	Flight Inspection Remark Type:			
<p>Procedure Comments: P-NOTAM This Cancels FDC 1/8188 Order 8260.3, chapter 2, New Circling Criteria Applied.</p> <p>CONTACT DAVE TEFFETELLER 202-267-5177</p>					

QUALITY
45
CHECKED

QUALITY
26
CHECKED

OLD

ALABASTER, ALABAMA

AL-5650 (FAA)

19059

WAAS CH 63219 W34A	APP CRS 340°	Rwy Idg TDZE Apt Elev 5000 586 586
--	------------------------	--

RNAV (GPS) RWY 34

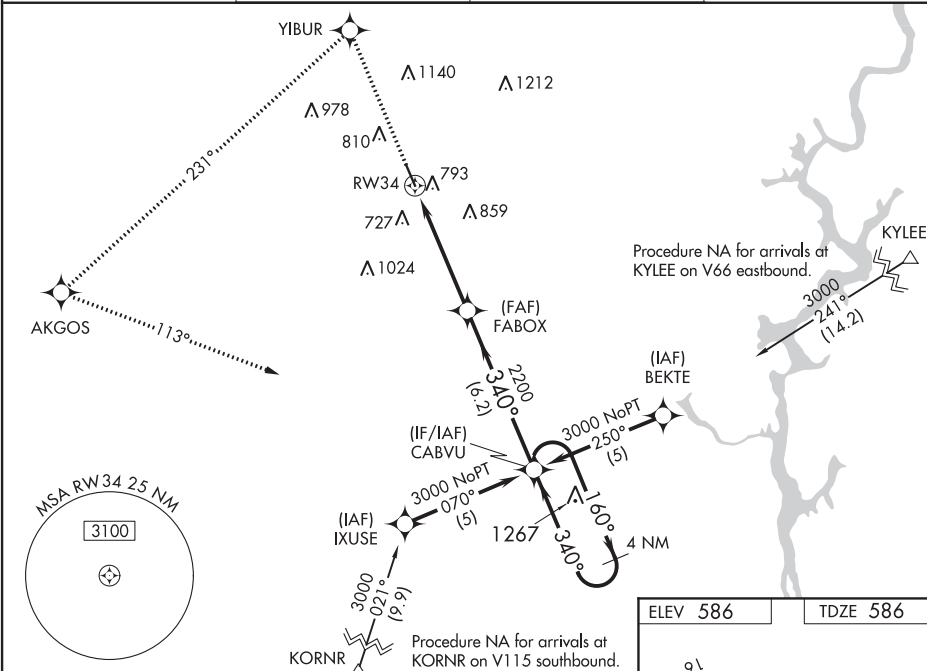
SHELBY COUNTY (EET)

▽ DME/DME RNP-0.3 NA. Visibility reduction by helicopters NA. When local altimeter setting not received, use Birmingham altimeter setting and increase all DA 63 feet and MDA 80 feet; increase LPV all Cats, LNAV/VNAV all Cats, and Circling Cats C/D visibilities ¼ mile. Baro-VNAV NA when using Birmingham altimeter setting. For uncompensated Baro-VNAV systems, LNAV/VNAV NA below -16°C (4°F) or above 47°C (116°F). VDP NA with Birmingham altimeter setting.

MISSED APPROACH: Climb to 3000 direct YIBUR and left turn on track 231° to AKGOS and left turn on track 113° to CABVU and hold.

ASOS 134.325	BIRMINGHAM APP CON 123.8 256.8	GCO 121.725	UNICOM 122.7 (CTAF) 0
------------------------	--	-----------------------	---------------------------------

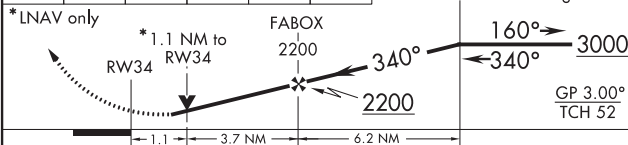
SE-4, 25 FEB 2021 to 25 MAR 2021



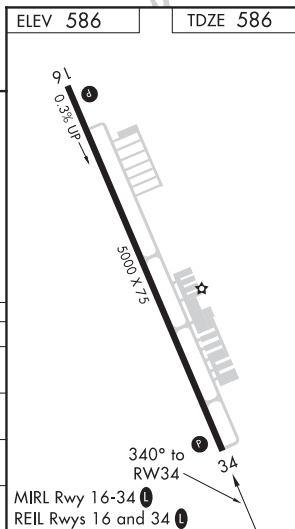
SE-4, 25 FEB 2021 to 25 MAR 2021

3000	YIBUR	AKGOS	CABVU
	tr 231°	tr 113°	

VGSI and RNAV glidepath not coincident (VGSI Angle 4.00°/TCH 44). 4 NM Holding Pattern



CATEGORY	A	B	C	D
LPV DA	947-1¼	361 (400-1¼)		
LNAV/VNAV DA	1093-1¾	507 (600-1¾)		
LNAV MDA	1100-1 514 (600-1)	1100-1½ 514 (600-1½)	1100-1¾ 514 (600-1¾)	
CIRCLING	1120-1 534 (600-1)	1120-1½ 534 (600-1½)	1220-2 634 (700-2)	



ALABASTER, ALABAMA
Amdt 2 23SEP10

33°11'N-86°47'W

RNAV (GPS) RWY 34

SHELBY COUNTY (EET)

