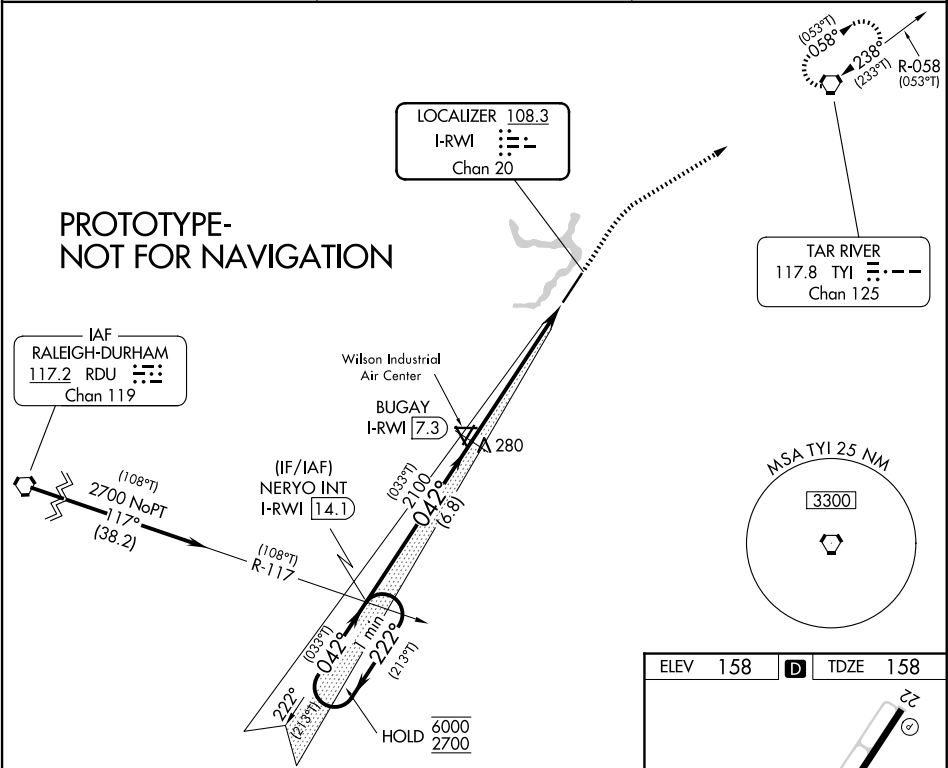


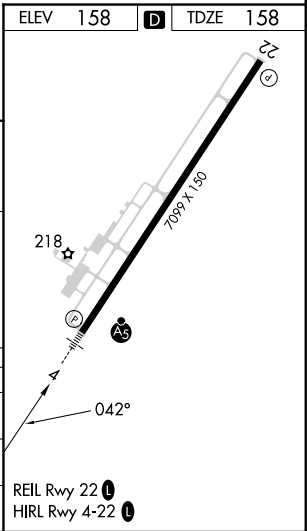
Flight Procedures Cover Page	Task Action: FLIGHT CHECK	Task Type: IAP	Estimated Chart Date: 11/27/2025	APWS Task ID: 5CB0F19D2C0D4A619681E4EFB26B11E4	APWS Project ID: 93E6F78630AB41B085CADD80BE597ABB
Procedure: ILS OR LOC RWY 4 AMDT 17		Enroute: NO	Specialist: Weston, Daniel		Agreement Number:
Airport ID: KRWI			Airport City: ROCKY MOUNT		State: NC
Facility ID: RWI	Facility Type: ILS	Flight Inspection Remark Type: New FC Slot			
<div>Procedure Comments:</div> <div>ACTIVE AIRNAV DATA USED FOR KRWI, PENDING AIRNAV DATA USED FOR I-RWI.</div> <div>CONTACT RAKE MCGRAW 405-954-8711.</div> <div><div>QUALITY 38 CHECKED</div><div>QUALITY 46 CHECKED</div></div>					

LOC/DME I-RWI	APP CRS	Rwy Ldg	7099
108.3	042°	TDZE	158
Chan 20		Apt Elev	158

DME required.		MALSR	MISSED APPROACH: Climb to 1200 then climbing right turn to 2100 direct TYI VORTAC and hold.
ASOS 118.875		WASHINGTON CENTER 123.85 279.65	UNICOM 123.05 (CTAF) 0



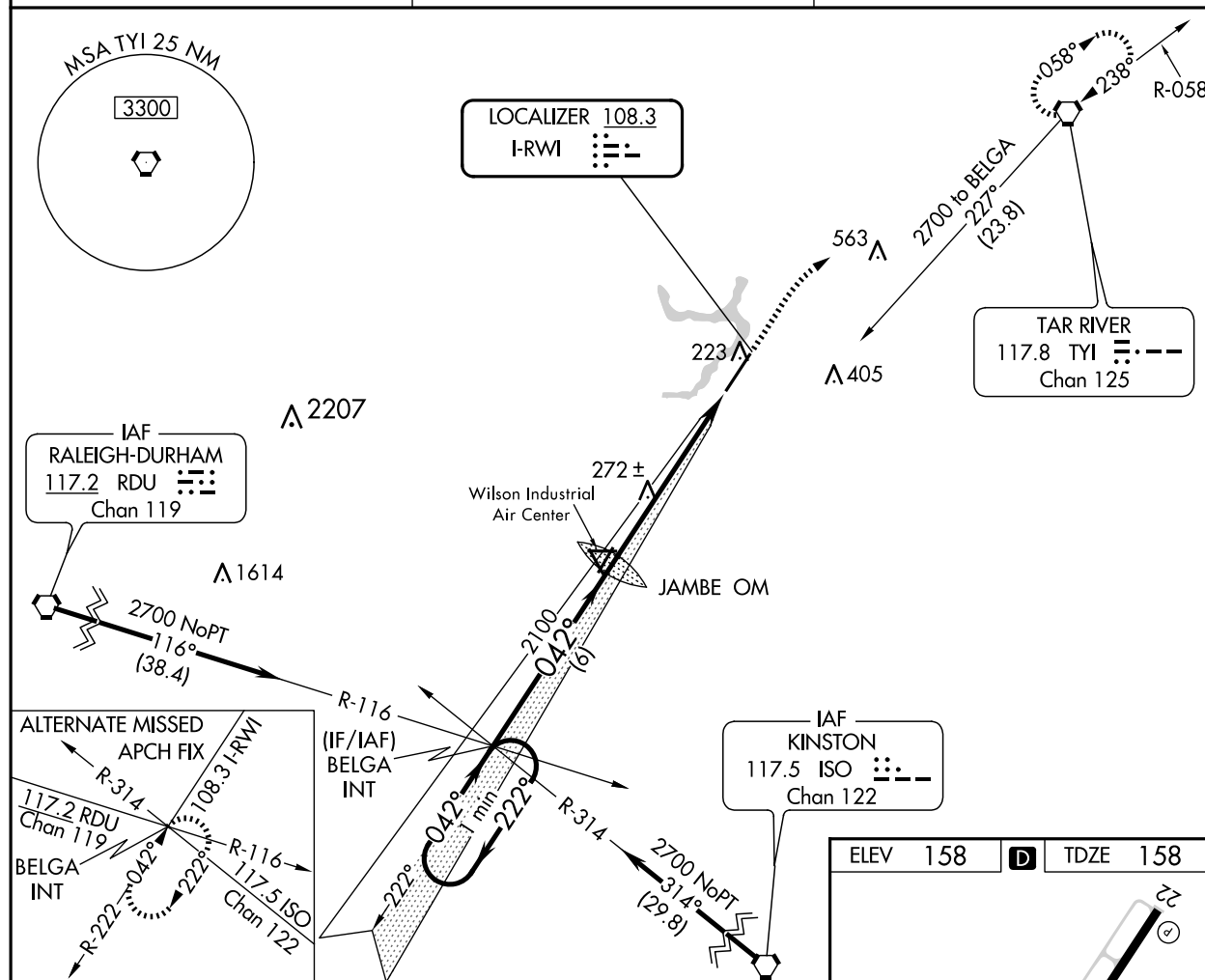
One Minute Holding Pattern		VGSI and ILS glidepath not coincident (VGSI Angle 3.00/TCH 41).		1200	2100	TYI
				↑	↷	⬡
				6000	2700	
				← 222°	→ 042°	
				(213°T)	(033°T)	
				042°	042°	
				2100	2100	
				6.8 NM	4.8 NM	1.1 NM
CATEGORY	A	B	C	D		
S-ILS 4	408-½ 250 (300-½)					
S-LOC 4	540-½	382 (400-½)	540-⅝	382 (400-⅝)		
CIRCLING	600-1 442 (500-1)	620-1 462 (500-1)	720-1½ 562 (600-1½)	740-2 582 (600-2)		



ILS or LOC RWY 4
ROCKY MOUNT/WILSON RGNL (RWI)

MALSR

MISSED APPROACH: Climb to 1200 then climbing right turn to 2100 direct TYI VORTAC and hold.

UNICOM
123.05 (CTAF) **L**

One Minute Holding Pattern

VGSI and descent angles not coincident (VGSI Angle 3.00/TCH 41).

BELGA INT

JAMBE OM

2700

222°

042°

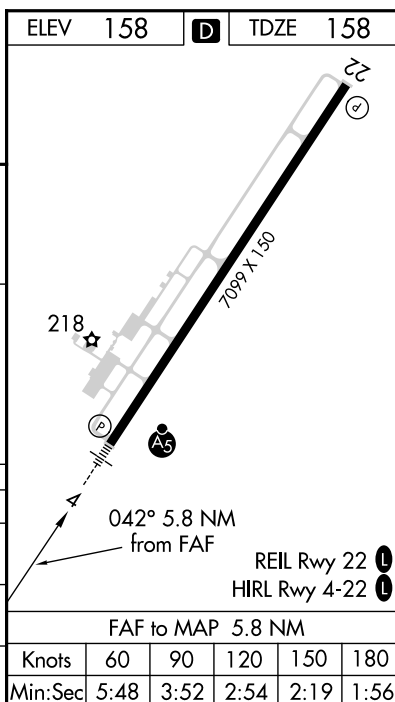
2100


2093

3.00°

41°

1200	2100	TYI
↑	↗	⬡



CATEGORY	A	B	C	D
S-ILS 4	408- $\frac{1}{2}$ 250 (300- $\frac{1}{2}$)			
S-LOC 4	540- $\frac{1}{2}$ 382 (400- $\frac{1}{2}$)	540- $\frac{5}{8}$ 382 (400- $\frac{5}{8}$)		540- $\frac{3}{4}$ 382 (400- $\frac{3}{4}$)
 CIRCLING	600-1 442 (500-1)	620-1 462 (500-1)	720-1 $\frac{1}{2}$ 562 (600-1 $\frac{1}{2}$)	740-2 582 (600-2)

SE-2, 17 APR 2025 to 15 MAY 2025

SE-2, 17 APR 2025 to 15 MAY 2025

