

|   |                         |                                |                                     |   |  |
|---|-------------------------|--------------------------------|-------------------------------------|---|--|
| Flight Procedures Cover Page  | Task Action:<br>P-NOTAM | Task Type:<br>IAP              | Estimated Chart Date:<br>06/12/2025 | APWS Task ID:<br>5BE3145C2E0A4D42919A3BB11C82A52C | APWS Project ID:<br>CDB80F01500047CBBA7C34DA4286C66F |
| Procedure:<br>RNAV (GPS) RWY 13 AMDT 0D   |                         | Enroute:<br>NO                 | Specialist:<br>Secaida, Roni        |   | Agreement Number:                                    |
| Airport ID:<br>5M5  |                         |                                | Airport City:<br>DECATUR            |   | State:<br>AR   |
| Facility ID:  | Facility Type:          | Flight Inspection Remark Type: |                                     |   |  |
| <div>Procedure Comments:</div> <div>P-NOTAM TO CLEAR NOTAM FDC 3/4764</div> <div>PROCESSED IAW TECHNICAL SUPPORT GROUP (AJF-17) MEMO DATED 07/07/2021, SUBJECT: GUIDANCE FOR PROCEDURAL CHANGES REQUIRING FLIGHT INSPECTION/VALIDATION</div> <div>Contact Eric Suski, (405) 954-7331</div> <div><div>5/4440</div><div>Digitally signed by<br/><b>ERIC N SUSKI</b><br/>Apr 09, 2025</div></div> <div><div><div>QUALITY<br/>38<br/>CHECKED</div><div>Digitally signed by<br/><b>PABLO ORTIZ-JR</b><br/>Mar 21, 2025</div></div><div><div>QUALITY<br/>32<br/>CHECKED</div></div></div> |                         |                                |                                     |   |  |

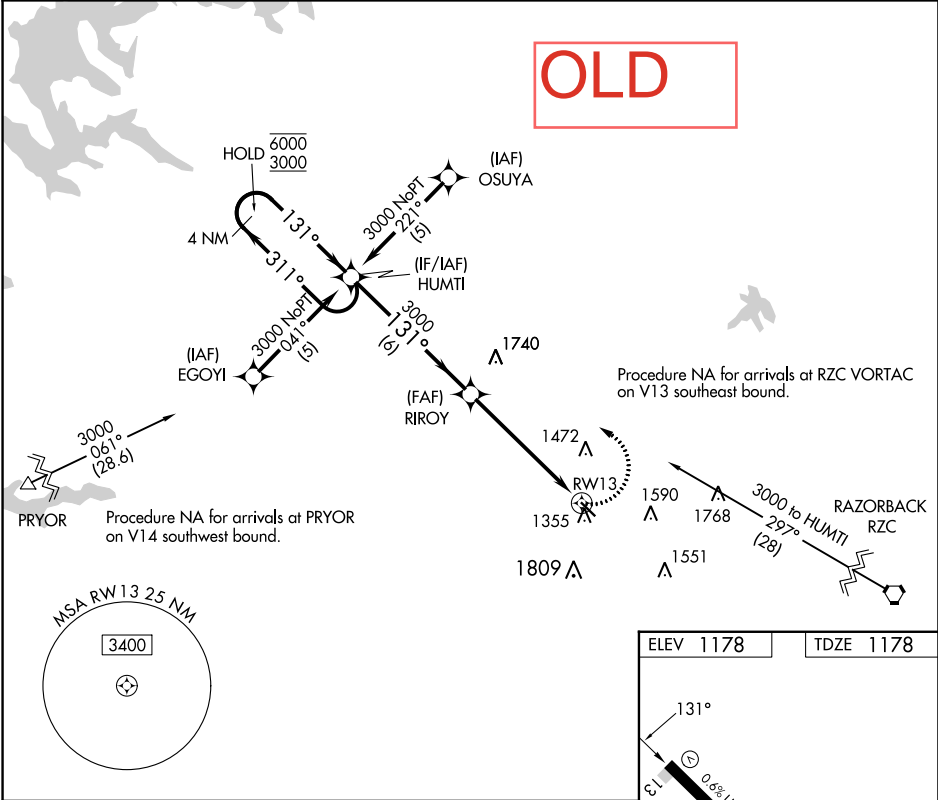
|         |          |      |
|---------|----------|------|
| APP CRS | Rwy Idg  | 3863 |
| 131°    | TDZE     | 1178 |
|         | Apt Elev | 1178 |

RNAV (GPS) RWY 13

CRYSTAL LAKE (5M5)

|                 |  |   |
|-----------------|--|---|
| RNP APCH - GPS. | Procedure NA at night. Rwy 13 helicopter visibility reduction below 1 SM NA. Use Northwest Arkansas Ntl altimeter setting; if not received, use Joplin Rgnl altimeter setting and increase all MDAs 120 feet and LNAV Cat C and Circling Cat B visibility ¼ SM and Circling Cat C visibility ½ SM. Circling NA for Cat C southwest of Rwy 13-31. | MISSED APPROACH:<br>Climbing left turn to 3000 direct HUMTI and hold. |
|-----------------|--|---|

|                                      |                   |                        |
|--------------------------------------|-------------------|------------------------|
| RAZORBACK APP CON ★<br>121.0 244.575 | CLNC DEL<br>126.6 | UNICOM<br>122.8 (CTAF) |
|--------------------------------------|-------------------|------------------------|



|                      |                       |  |                               |                 |
|----------------------|-----------------------|--|-------------------------------|-----------------|
| 4 NM Holding Pattern |                       | VGSI and descent angles not coincident (VGSI Angle 3.50/TCH 53). |                               | 3000 HUMTI      |
| 6000<br>3000         |                       | HUMTI  | RIROY                         | RW13            |
| 311°<br>131°         |                       | 131°   | 3000                          | 3.05°<br>TCH 40 |
|                      |                       | 6 NM   | 5.6 NM                        |                 |
| CATEGORY             | A                     | B  | C                             | D               |
| LNAV MDA             | 1720-1                | 542 (600-1)  | 1720-1 5/8<br>542 (600-1 5/8) | NA              |
| CIRCLING             | 1820-1<br>642 (700-1) | 1900-1<br>722 (800-1)  | 1940-2 1/4<br>762 (800-2 1/4) | NA              |
| URL Rwy 13-31        |                       |  |                               |                 |