

## DME DME Assessment Results for BHHIA1 path ADUBE\_BUNKR

### Results Summary

|                            |  |
|----------------------------|--|
| Flyability:                | Completed  |
| DME/DME:                   | Completed - No Critical DMEs   |
| Name:                      | Miles CTR Carpenter  |
| Project File:              | C:\Users\Miles CTR Carpenter\Desktop\KFLI STARs DME\KFLI BHHIA STAR DME\KFLI BHHIA1 STAR DME_03.17.2021.tgs  |
| Output File:               | C:\Users\Miles CTR Carpenter\Desktop\KFLI STARs DME\KFLI BHHIA STAR DME\KFLI [IFPA] BHHIA1 20210317_0728 EDT\ADUBE_BUNKR\KFLI BHHIA1 RNAV STAR ADUBE BUNKR 20210317_0728 EDT.pdf |
| Procedure Name:            | BHHIA1   |
| Software:<br>DmeDmePlugin: | 6.2.0  |
| Date/Time:                 | 03/17/2021 07:28 EDT   |
| Databases:                 | DTED 0max  |

### Failures

No Failures

### Warnings

No Warnings

### Notes For Flight Check

None

### Flight Plan

| Name  | Type | Lat/Lon                                | Altitude (ft) | VNAV Mode | Ground Speed (kts) | Turn Type | Leg Type |
|-------|------|--|---------------|-----------|--------------------|-----------|----------|
| ADUBE | WP   | N26° 00' 44.710",<br>W080° 51' 06.540" | 6000          | VNAV      | 280                | FLY_BY    | TF       |
| BUNKR | WP   | N26° 04' 02.970",<br>W080° 30' 16.050" | 5000          | VNAV      | 280                | FLY_BY    | TF       |

### Flyability

|                        |                                 |
|------------------------|---------------------------------|
| Flight Type:           | RNAV_STAR                       |
| Selected Airport:      | KFLI [IFPA]                     |
| Climb Gradient:        | None assigned                   |
| Speeds:                | 200 Ground Speed to 11000 FT    |
|                        | 240 Ground Speed to 18000 FT    |
|                        | 260 Ground Speed to 24000 FT    |
|                        | 340 Ground Speed above 24000 FT |
| Descent During a Turn: | Allowed                         |
| VNAV Mode:             | Flight Plan                     |

## DME DME Assessment Results for BHHIA1 path ADUBE\_BUNKR

| DME/DME                           |                      |
|-----------------------------------|----------------------|
| RNP:                              | RNP 2                |
| Flight Mode:                      | Manual               |
| Line of Sight (DTED Level 0 Max): | Evaluated            |
| Inertial Drift:                   | Enabled              |
| Initial Drift:                    | 0.558 NM             |
| INS Drift Rate:                   | 8.0 NM/Hour          |
| Range Mode:                       | OSV                  |
| RNP Edges:                        | Evaluated            |
| Min DME Range:                    | 3.0 NM               |
| DME Types:                        | DME, VOR-DME, VORTAC |
| DME Include Angles:               | 30 to 150            |
| Critical DMEs:                    | Allowed              |
| DoD Facilities:                   | Not included         |
| Foreign Facilities:               | Included             |
| High DMEs:                        | Included             |
| Low DMEs:                         | Included             |
| Terminal DMEs:                    | Included             |
| Flight Check DMEs:                | Not selected         |
| Higher Altitudes:                 | Not Evaluated        |
| Near Maximum Altitude:            | Not Evaluated        |
| Automatic ESVs:                   | Not enabled          |
| Disabled DMEs:                    | ZFP,ZQA,ZTC          |

| DME/DME (Continued) |      |  |        |       |      |        |          |          |        |          |
|---------------------|------|--|--------|-------|------|--------|----------|----------|--------|----------|
| DMEs Used           |      |  |        |       |      |        |          |          |        |          |
| #                   | Name | Lat/Lon                                | MAGVAR | Range | Type | Source | Critical | Status   | Time   | Distance |
| 1                   | PHK  | N26° 46' 57.873",<br>W080° 41' 29.157" | 0.0 E  | 130   | H    | IFPA   | NO       | Enabled  | 19.1 % | 19.1 %   |
| 2                   | VKZ  | N25° 45' 06.846",<br>W080° 09' 15.996" | 4.0 W  | 130   | H    | IFPA   | NO       | Enabled  | 79.3 % | 79.3 %   |
| 3                   | FLL  | N26° 04' 26.183",<br>W080° 09' 59.192" | 6.0 W  | 130   | H    | IFPA   | NO       | Enabled  | 100 %  | 100 %    |
| 4                   | RSW  | N26° 31' 47.551",<br>W081° 46' 32.764" | 2.0 W  | 40    | L    | IFPA   | NO       | Enabled  |        |          |
| 5                   | DHP  | N25° 47' 59.866",<br>W080° 20' 56.526" | 4.0 W  | 130   | H    | IFPA   | NO       | Enabled  | 100 %  | 100 %    |
| 6                   | PBI  | N26° 40' 48.198",<br>W080° 05' 11.359" | 3.0 W  | 130   | H    | IFPA   | NO       | Enabled  | 100 %  | 100 %    |
| 7                   | ZFP  | N26° 33' 19.250",<br>W078° 41' 52.250" | 3.0 W  | 130   | H    | IFPA   | NO       | Disabled |        |          |
| 8                   | ZQA  | N25° 01' 31.860",<br>W077° 26' 47.140" | 6.0 W  | 130   | H    | IFPA   | NO       | Disabled |        |          |
| 9                   | ZTC  | N26° 44' 05.000",<br>W077° 22' 45.000" | 5.0 W  | 130   | H    | IFPA   | NO       | Disabled |        |          |

| Flight Check DME Selection |               |     |     |     |     |           |
|----------------------------|---------------|-----|-----|-----|-----|-----------|
| Distance [NM]              | Selected DMEs |     |     |     |     | Alternate |
| 0.0                        | PBI           | RSW | PHK | DHP | FLL |           |
| 0.1                        | PHK           | DHP | FLL | PBI |     |           |
| 3.7                        | PBI           | DHP | FLL |     |     |           |
| 4.0                        | PBI           | DHP | VKZ | FLL |     |           |

| Inertial Drift Segments |                |              |             |
|-------------------------|----------------|--------------|-------------|
| #                       | Start Location | End Location | Length [NM] |

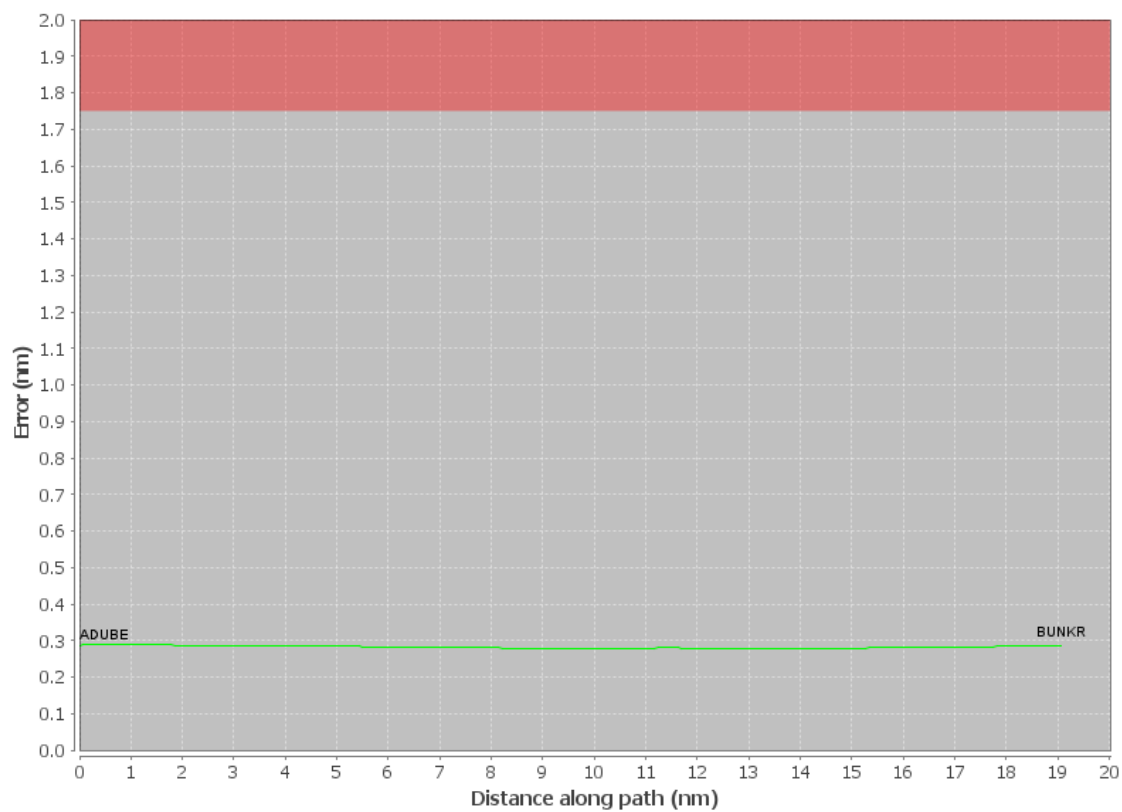
| Available DMEs by Waypoints |                |                              |
|-----------------------------|----------------|------------------------------|
| Waypoint Before             | Waypoint After | DME List                     |
| ADUBE                       | BUNKR          | PHK, VKZ, PBI, FLL, RSW, DHP |

# DME DME Assessment Results for BHIA1 path ADUBE\_BUNKR

| User Data Files |  |   |        |       |                |  |                    |        |
|-----------------|--|---|--------|-------|----------------|--|--------------------|--------|
| #               | File Name  |   |        |       |                |  |                    |        |
| 1               | UserDMEsKFLL [IFPA] BAHIA1 RNAV STAR_20210106_1600 EST.udt |   |        |       |                |  |                    |        |
| User DMEs       |  |   |        |       |                |  |                    |        |
| #               | Name   | Lat/Lon   | MAGVAR | Range | Elevation [ft] | Frequency  | Replaces           | Status |
| 1               | PBI FAA 882483-44<br>PBI [IFPA]                            | N26° 40' 48.198",<br>W080° 05' 11.359"                              | 3.0 W  | 130   | 15.7           | 115.7  | PBI FAA 882483-44  |        |
| ESV:            |  | Bearing [True]: 193.0° to 248.0°<br>Bearing [Mag]: 196.0° to 251.0° |        |       |                | Arc Distance: Out to 73.0 NM<br>Altitude: 3000.0 to 16000.0 ft |                    |        |
| 2               | DHP FAA 955265-050<br>DHP [IFPA]                           | N25° 47' 59.866",<br>W080° 20' 56.526"                              | 4.0 W  | 130   | 5.9            | 113.9  | DHP FAA 955265-050 |        |
| ESV:            |  | Bearing [True]: 216.0° to 266.0°<br>Bearing [Mag]: 220.0° to 270.0° |        |       |                | Arc Distance: Out to 98.0 NM<br>Altitude: 6900.0 to 18000.0 ft |                    |        |
| 3               | PHK FAA 900991-11<br>PHK [IFPA]                            | N26° 46' 57.873",<br>W080° 41' 29.157"                              | 0.0 E  | 130   | 15.5           | 115.4  | PHK FAA 900991-11  |        |
| ESV:            |  | Bearing [True]: 185.0° to 225.0°<br>Bearing [Mag]: 185.0° to 225.0° |        |       |                | Arc Distance: Out to 65.0 NM<br>Altitude: 5000.0 to 11000.0 ft |                    |        |
| 4               | RSW FAA 191354-013<br>RSW [IFPA]                           | N26° 31' 47.551",<br>W081° 46' 32.764"                              | 2.0 W  | 40    | 25             | 111.8  | RSW FAA 191354-013 |        |
| ESV:            |  | Bearing [True]: 118.0° to 178.0°<br>Bearing [Mag]: 120.0° to 180.0° |        |       |                | Arc Distance: Out to 90.0 NM<br>Altitude: 6000.0 to 15000.0 ft |                    |        |
| 5               | PHK FAA 900991-49<br>PHK [IFPA]                            | N26° 46' 57.873",<br>W080° 41' 29.157"                              | 0.0 E  | 130   | 15.5           | 115.4  | PHK FAA 900991-49  |        |
| ESV:            |  | Bearing [True]: 178.0° to 202.0°<br>Bearing [Mag]: 178.0° to 202.0° |        |       |                | Arc Distance: Out to 95.0 NM<br>Altitude: 6000.0 to 16000.0 ft |                    |        |
| 6               | EYW FAA 701364-019<br>EYW [IFPA]                           | N24° 35' 09.162",<br>W081° 48' 01.715"                              | 1.0 E  | 130   | 10             | 113.5  | EYW FAA 701364-019 |        |
| ESV:            |  | Bearing [True]: 11.0° to 46.0°<br>Bearing [Mag]: 10.0° to 45.0°     |        |       |                | Arc Distance: Out to 90.0 NM<br>Altitude: 6900.0 to 15000.0 ft |                    |        |
| 7               | VKZ FAA 671324-57<br>VKZ [IFPA]                            | N25° 45' 06.846",<br>W080° 09' 15.996"                              | 4.0 W  | 130   | 10.5           | 117.1  | VKZ FAA 671324-57  |        |
| ESV:            |  | Bearing [True]: 240.0° to 260.0°<br>Bearing [Mag]: 244.0° to 264.0° |        |       |                | Arc Distance: Out to 70.0 NM<br>Altitude: 4500.0 to 18000.0 ft |                    |        |

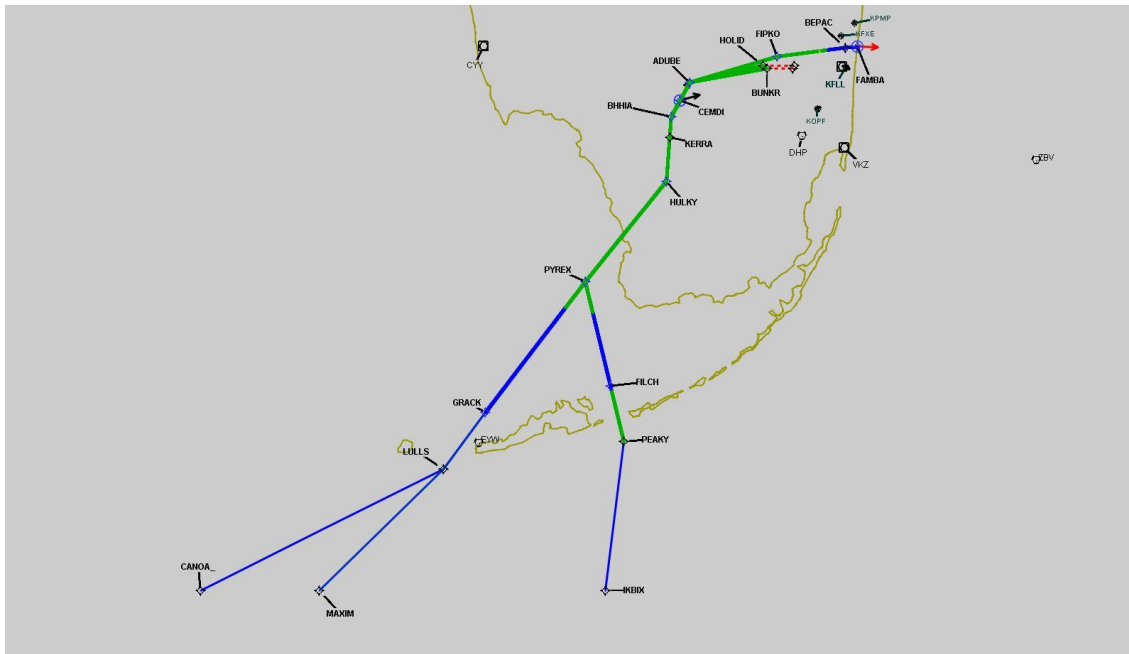
# DME DME Assessment Results for BHHIA1 path ADUBE\_BUNKR

## DME Error



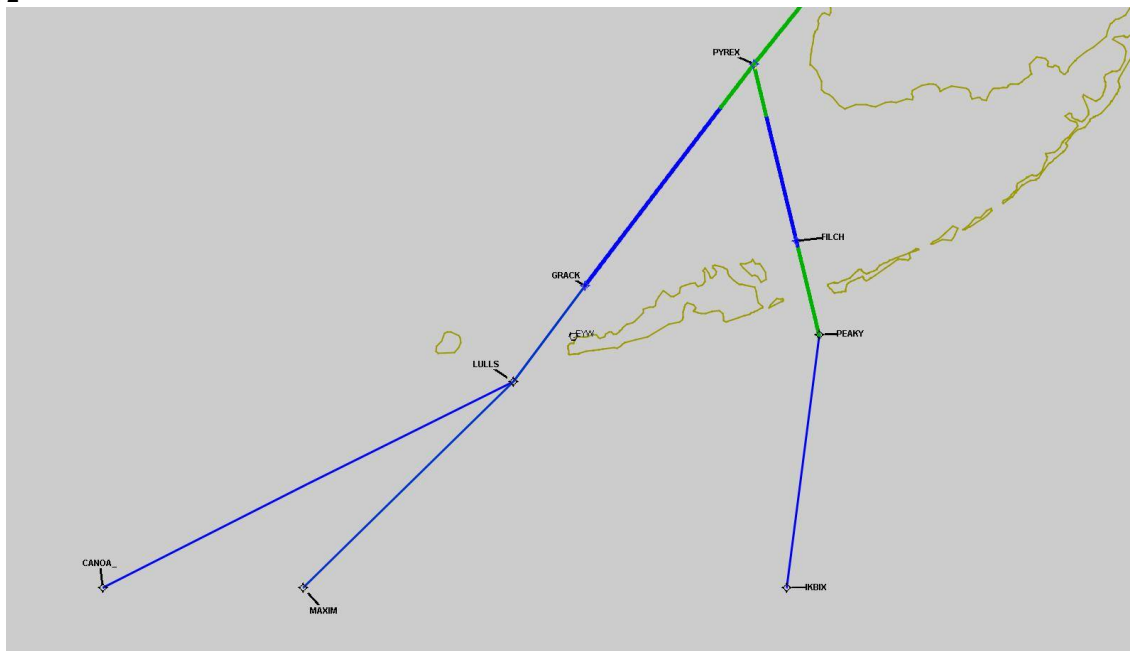
## DME DME Assessment Results for BHHIA1 path ADUBE\_BUNKR

Graphic Depiction 1



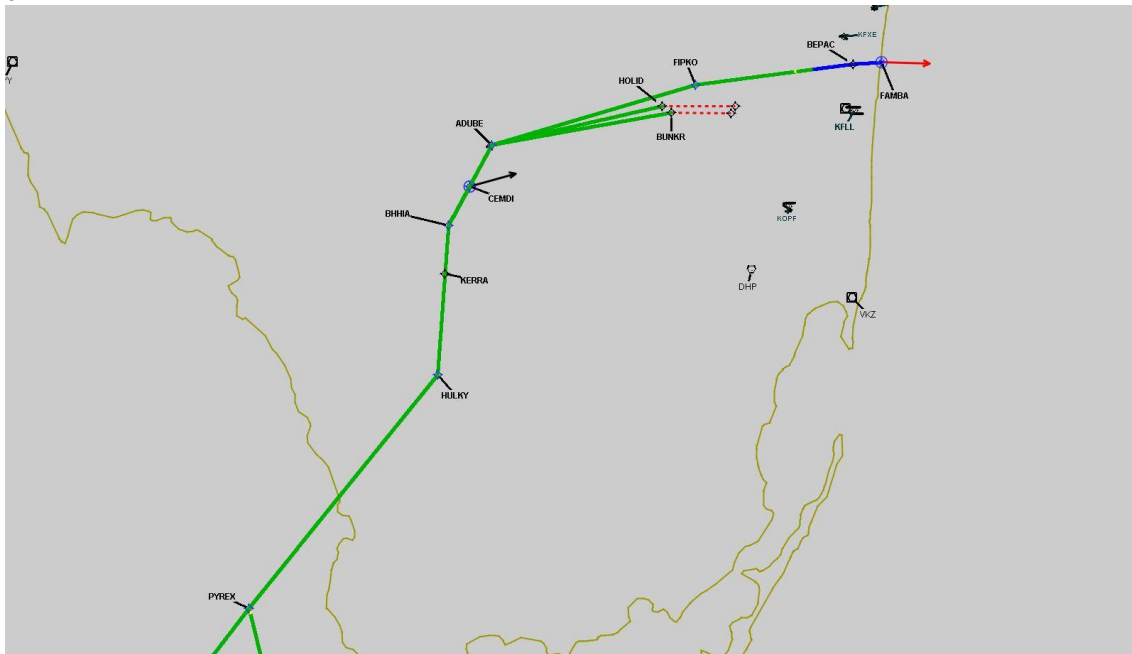
## DME DME Assessment Results for BHHIA1 path ADUBE\_BUNKR

Graphic Depiction 2



## DME DME Assessment Results for BHHIA1 path ADUBE\_BUNKR

Graphic Depiction 3



## DME DME Assessment Results for BHHIA1 path ADUBE\_HOLID

### Results Summary

|                            |  |
|----------------------------|--|
| Flyability:                | Completed  |
| DME/DME:                   | Completed - No Critical DMEs   |
| Name:                      | Miles CTR Carpenter  |
| Project File:              | C:\Users\Miles CTR Carpenter\Desktop\KFLI STARs DME\KFLI BHHIA STAR DME\KFLI BHHIA1 STAR DME_03.17.2021.tgs  |
| Output File:               | C:\Users\Miles CTR Carpenter\Desktop\KFLI STARs DME\KFLI BHHIA STAR DME\KFLI [IFPA] BHHIA1 20210317_0728 EDT\ADUBE_HOLID\KFLI BHHIA1 RNAV STAR ADUBE HOLID 20210317_0728 EDT.pdf |
| Procedure Name:            | BHHIA1   |
| Software:<br>DmeDmePlugin: | 6.2.0  |
| Date/Time:                 | 03/17/2021 07:28 EDT   |
| Databases:                 | DTED 0max  |

### Failures

No Failures

### Warnings

No Warnings

### Notes For Flight Check

None

### Flight Plan

| Name  | Type | Lat/Lon                                | Altitude (ft) | VNAV Mode | Ground Speed (kts) | Turn Type | Leg Type |
|-------|------|--|---------------|-----------|--------------------|-----------|----------|
| ADUBE | WP   | N26° 00' 44.710",<br>W080° 51' 06.540" | 6000          | VNAV      | 280                | FLY_BY    | TF       |
| HOLID | WP   | N26° 04' 42.920",<br>W080° 31' 20.570" | 5000          | VNAV      | 280                | FLY_BY    | TF       |

### Flyability

|                        |                                 |
|------------------------|---------------------------------|
| Flight Type:           | RNAV_STAR                       |
| Selected Airport:      | KFLI [IFPA]                     |
| Climb Gradient:        | None assigned                   |
| Speeds:                | 200 Ground Speed to 11000 FT    |
|                        | 240 Ground Speed to 18000 FT    |
|                        | 260 Ground Speed to 24000 FT    |
|                        | 340 Ground Speed above 24000 FT |
| Descent During a Turn: | Allowed                         |
| VNAV Mode:             | Flight Plan                     |



## DME DME Assessment Results for BHHIA1 path ADUBE\_HOLID

| DME/DME                           |                      |
|-----------------------------------|----------------------|
| RNP:                              | RNP 2                |
| Flight Mode:                      | Manual               |
| Line of Sight (DTED Level 0 Max): | Evaluated            |
| Inertial Drift:                   | Enabled              |
| Initial Drift:                    | 0.558 NM             |
| INS Drift Rate:                   | 8.0 NM/Hour          |
| Range Mode:                       | OSV                  |
| RNP Edges:                        | Evaluated            |
| Min DME Range:                    | 3.0 NM               |
| DME Types:                        | DME, VOR-DME, VORTAC |
| DME Include Angles:               | 30 to 150            |
| Critical DMEs:                    | Allowed              |
| DoD Facilities:                   | Not included         |
| Foreign Facilities:               | Included             |
| High DMEs:                        | Included             |
| Low DMEs:                         | Included             |
| Terminal DMEs:                    | Included             |
| Flight Check DMEs:                | Not selected         |
| Higher Altitudes:                 | Not Evaluated        |
| Near Maximum Altitude:            | Not Evaluated        |
| Automatic ESVs:                   | Not enabled          |
| Disabled DMEs:                    | ZFP,ZQA,ZTC          |

| DME/DME (Continued) |      |  |        |       |      |        |          |          |        |          |
|---------------------|------|--|--------|-------|------|--------|----------|----------|--------|----------|
| DMEs Used           |      |  |        |       |      |        |          |          |        |          |
| #                   | Name | Lat/Lon                                | MAGVAR | Range | Type | Source | Critical | Status   | Time   | Distance |
| 1                   | PHK  | N26° 46' 57.873",<br>W080° 41' 29.157" | 0.0 E  | 130   | H    | IFPA   | NO       | Enabled  | 19.6 % | 19.6 %   |
| 2                   | VKZ  | N25° 45' 06.846",<br>W080° 09' 15.996" | 4.0 W  | 130   | H    | IFPA   | NO       | Enabled  | 76.6 % | 76.6 %   |
| 3                   | FLL  | N26° 04' 26.183",<br>W080° 09' 59.192" | 6.0 W  | 130   | H    | IFPA   | NO       | Enabled  | 100 %  | 100 %    |
| 4                   | RSW  | N26° 31' 47.551",<br>W081° 46' 32.764" | 2.0 W  | 40    | L    | IFPA   | NO       | Enabled  |        |          |
| 5                   | DHP  | N25° 47' 59.866",<br>W080° 20' 56.526" | 4.0 W  | 130   | H    | IFPA   | NO       | Enabled  | 100 %  | 100 %    |
| 6                   | PBI  | N26° 40' 48.198",<br>W080° 05' 11.359" | 3.0 W  | 130   | H    | IFPA   | NO       | Enabled  | 100 %  | 100 %    |
| 7                   | ZFP  | N26° 33' 19.250",<br>W078° 41' 52.250" | 3.0 W  | 130   | H    | IFPA   | NO       | Disabled |        |          |
| 8                   | ZQA  | N25° 01' 31.860",<br>W077° 26' 47.140" | 6.0 W  | 130   | H    | IFPA   | NO       | Disabled |        |          |
| 9                   | ZTC  | N26° 44' 05.000",<br>W077° 22' 45.000" | 5.0 W  | 130   | H    | IFPA   | NO       | Disabled |        |          |

| Flight Check DME Selection |               |     |     |     |     |           |
|----------------------------|---------------|-----|-----|-----|-----|-----------|
| Distance [NM]              | Selected DMEs |     |     |     |     | Alternate |
| 0.0                        | PBI           | RSW | PHK | DHP | FLL |           |
| 0.1                        | PHK           | DHP | FLL | PBI |     |           |
| 3.6                        | PBI           | DHP | FLL |     |     |           |
| 4.3                        | PBI           | DHP | VKZ | FLL |     |           |

| Inertial Drift Segments |                |              |             |
|-------------------------|----------------|--------------|-------------|
| #                       | Start Location | End Location | Length [NM] |

| Available DMEs by Waypoints |                |                              |
|-----------------------------|----------------|------------------------------|
| Waypoint Before             | Waypoint After | DME List                     |
| ADUBE                       | HOLID          | PHK, VKZ, PBI, FLL, RSW, DHP |

# DME DME Assessment Results for BHIA1 path ADUBE\_HOLID

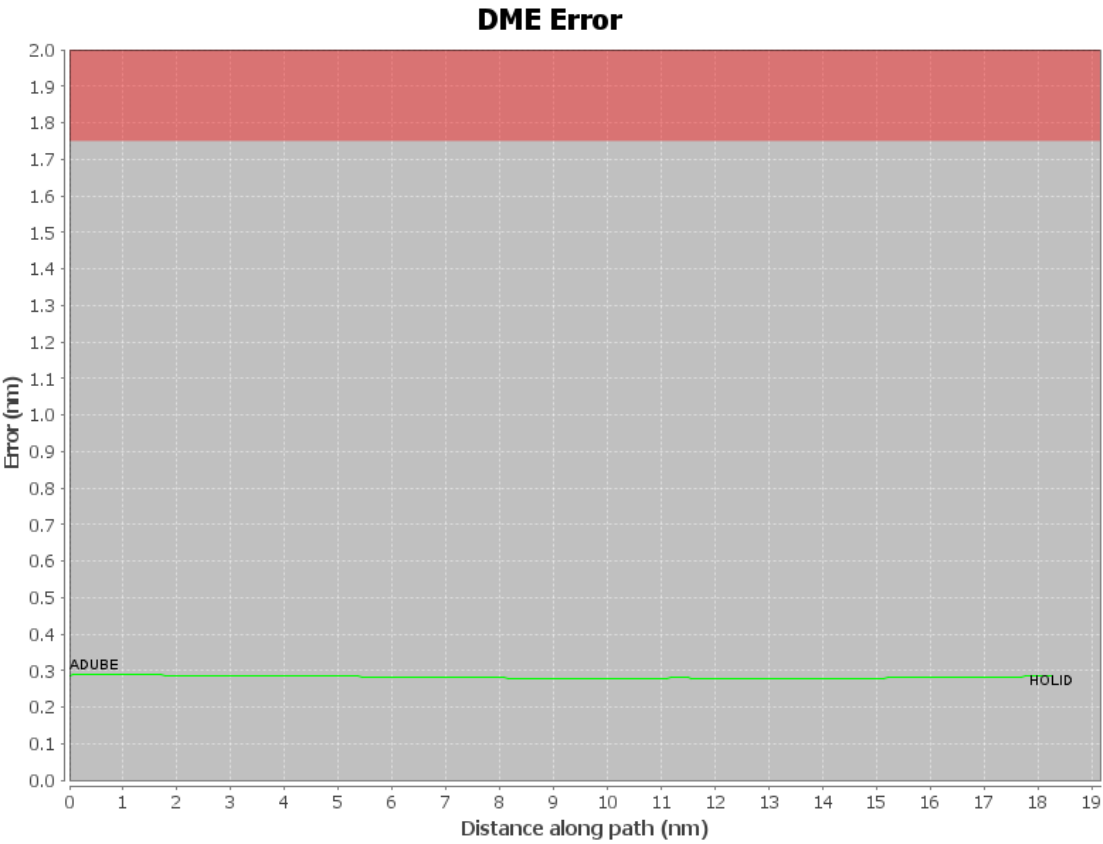
## User Data Files

| # | File Name  |
|---|--|
| 1 | UserDMEsKFLL [IFPA] BAHIA1 RNAV STAR_20210106_1600 EST.udt |

## User DMEs

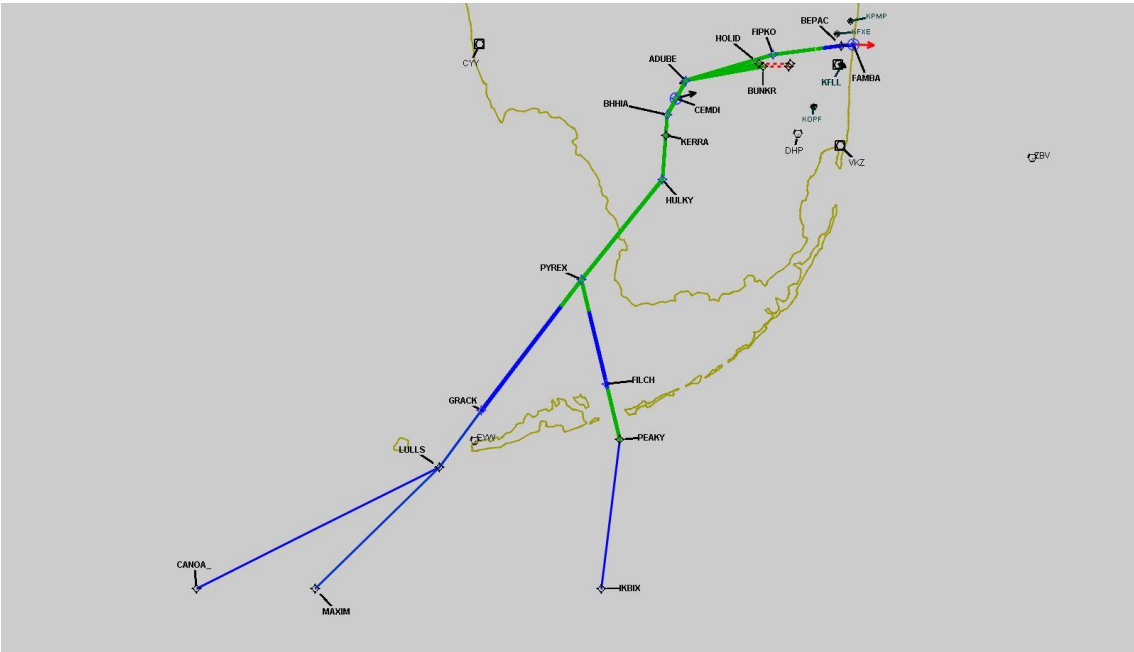
| #    | Name                             | Lat/Lon   | MAGVAR | Range | Elevation [ft] | Frequency  | Replaces           | Status |
|------|----------------------------------|---|--------|-------|----------------|--|--------------------|--------|
| 1    | PBI FAA 882483-44<br>PBI [IFPA]  | N26° 40' 48.198",<br>W080° 05' 11.359"                              | 3.0 W  | 130   | 15.7           | 115.7  | PBI FAA 882483-44  |        |
| ESV: |                                  | Bearing [True]: 193.0° to 248.0°<br>Bearing [Mag]: 196.0° to 251.0° |        |       |                | Arc Distance: Out to 73.0 NM<br>Altitude: 3000.0 to 16000.0 ft |                    |        |
| 2    | DHP FAA 955265-050<br>DHP [IFPA] | N25° 47' 59.866",<br>W080° 20' 56.526"                              | 4.0 W  | 130   | 5.9            | 113.9  | DHP FAA 955265-050 |        |
| ESV: |                                  | Bearing [True]: 216.0° to 266.0°<br>Bearing [Mag]: 220.0° to 270.0° |        |       |                | Arc Distance: Out to 98.0 NM<br>Altitude: 6900.0 to 18000.0 ft |                    |        |
| 3    | PHK FAA 900991-11<br>PHK [IFPA]  | N26° 46' 57.873",<br>W080° 41' 29.157"                              | 0.0 E  | 130   | 15.5           | 115.4  | PHK FAA 900991-11  |        |
| ESV: |                                  | Bearing [True]: 185.0° to 225.0°<br>Bearing [Mag]: 185.0° to 225.0° |        |       |                | Arc Distance: Out to 65.0 NM<br>Altitude: 5000.0 to 11000.0 ft |                    |        |
| 4    | RSW FAA 191354-013<br>RSW [IFPA] | N26° 31' 47.551",<br>W081° 46' 32.764"                              | 2.0 W  | 40    | 25             | 111.8  | RSW FAA 191354-013 |        |
| ESV: |                                  | Bearing [True]: 118.0° to 178.0°<br>Bearing [Mag]: 120.0° to 180.0° |        |       |                | Arc Distance: Out to 90.0 NM<br>Altitude: 6000.0 to 15000.0 ft |                    |        |
| 5    | PHK FAA 900991-49<br>PHK [IFPA]  | N26° 46' 57.873",<br>W080° 41' 29.157"                              | 0.0 E  | 130   | 15.5           | 115.4  | PHK FAA 900991-49  |        |
| ESV: |                                  | Bearing [True]: 178.0° to 202.0°<br>Bearing [Mag]: 178.0° to 202.0° |        |       |                | Arc Distance: Out to 95.0 NM<br>Altitude: 6000.0 to 16000.0 ft |                    |        |
| 6    | EYW FAA 701364-019<br>EYW [IFPA] | N24° 35' 09.162",<br>W081° 48' 01.715"                              | 1.0 E  | 130   | 10             | 113.5  | EYW FAA 701364-019 |        |
| ESV: |                                  | Bearing [True]: 11.0° to 46.0°<br>Bearing [Mag]: 10.0° to 45.0°     |        |       |                | Arc Distance: Out to 90.0 NM<br>Altitude: 6900.0 to 15000.0 ft |                    |        |
| 7    | VKZ FAA 671324-57<br>VKZ [IFPA]  | N25° 45' 06.846",<br>W080° 09' 15.996"                              | 4.0 W  | 130   | 10.5           | 117.1  | VKZ FAA 671324-57  |        |
| ESV: |                                  | Bearing [True]: 240.0° to 260.0°<br>Bearing [Mag]: 244.0° to 264.0° |        |       |                | Arc Distance: Out to 70.0 NM<br>Altitude: 4500.0 to 18000.0 ft |                    |        |

DME DME Assessment Results for BHHIA1 path ADUBE\_HOLID



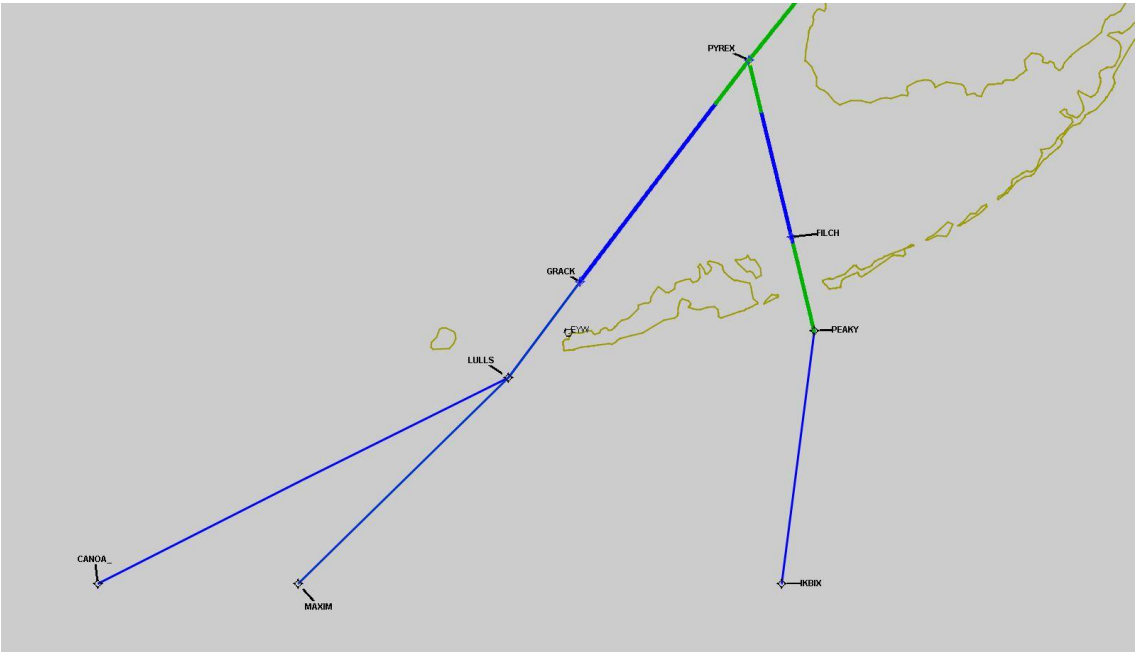
DME DME Assessment Results for BHHIA1 path ADUBE\_HOLID

Graphic Depiction 1



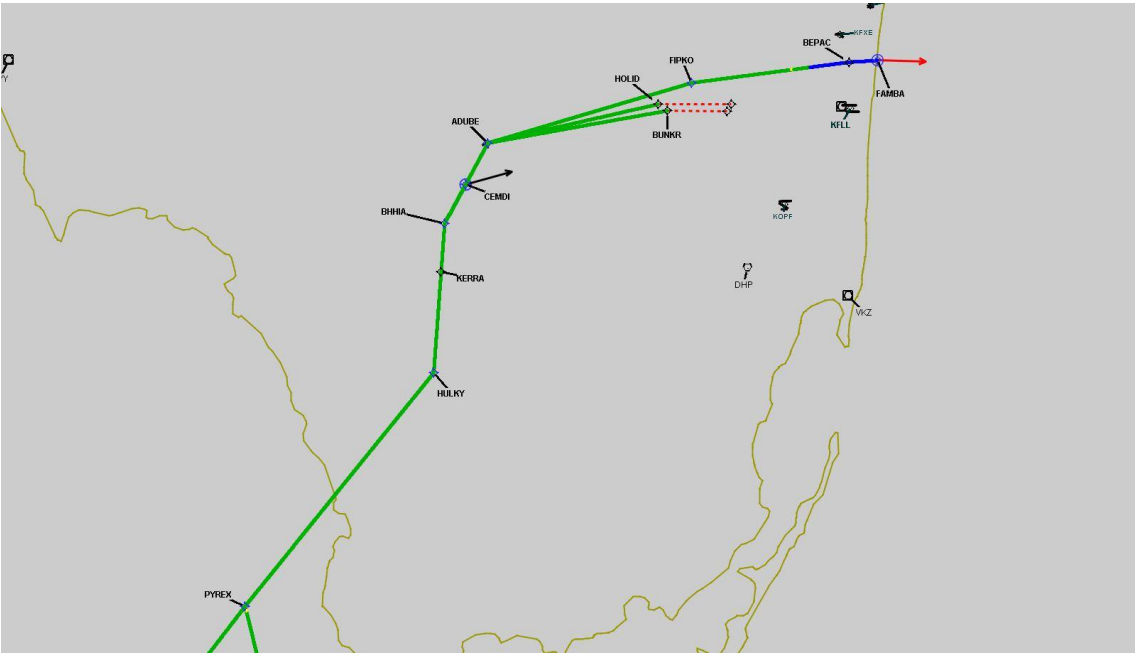
DME DME Assessment Results for BHHIA1 path ADUBE\_HOLID

Graphic Depiction 2



DME DME Assessment Results for BHHIA1 path ADUBE\_HOLID

Graphic Depiction 3



## DME DME Assessment Results for BHHIA1 path BHHIA\_CEMDI

### Results Summary

|                            |  |
|----------------------------|--|
| Flyability:                | Completed  |
| DME/DME:                   | Completed - No Critical DMEs   |
| Name:                      | Miles CTR Carpenter  |
| Project File:              | C:\Users\Miles CTR Carpenter\Desktop\KFLI STARs DME\KFLI BHHIA STAR DME\KFLI BHHIA1 STAR DME_03.17.2021.tgs  |
| Output File:               | C:\Users\Miles CTR Carpenter\Desktop\KFLI STARs DME\KFLI BHHIA STAR DME\KFLI [IFPA] BHHIA1 20210317_0728 EDT\BHHIA_CEMDI\KFLI BHHIA1 RNAV STAR BHHIA_CEMDI 20210317_0728 EDT.pdf |
| Procedure Name:            | BHHIA1   |
| Software:<br>DmeDmePlugin: | 6.2.0  |
| Date/Time:                 | 03/17/2021 07:28 EDT   |
| Databases:                 | DTED 0max  |

### Failures

No Failures

### Warnings

No Warnings

### Notes For Flight Check

None

### Flight Plan

| Name  | Type | Lat/Lon                                | Altitude (ft) | VNAV Mode | Ground Speed (kts) | Turn Type | Leg Type |
|-------|------|--|---------------|-----------|--------------------|-----------|----------|
| BHHIA | WP   | N25° 52' 32.490",<br>W080° 56' 08.286" | 6000          | VNAV      | 280                | FLY_BY    | TF       |
| CEMDI | WP   | N25° 56' 29.376",<br>W080° 53' 43.169" | 5000          | VNAV      | 280                | FLY_OVER  | TF       |

### Flyability

|                        |                                 |
|------------------------|---------------------------------|
| Flight Type:           | RNAV_STAR                       |
| Selected Airport:      | KFLI [IFPA]                     |
| Climb Gradient:        | None assigned                   |
| Speeds:                | 200 Ground Speed to 11000 FT    |
|                        | 240 Ground Speed to 18000 FT    |
|                        | 260 Ground Speed to 24000 FT    |
|                        | 340 Ground Speed above 24000 FT |
| Descent During a Turn: | Allowed                         |
| VNAV Mode:             | Flight Plan                     |

## DME DME Assessment Results for BHHIA1 path BHHIA\_CEMDI

| DME/DME                           |                      |
|-----------------------------------|----------------------|
| RNP:                              | RNP 2                |
| Flight Mode:                      | Manual               |
| Line of Sight (DTED Level 0 Max): | Evaluated            |
| Inertial Drift:                   | Enabled              |
| Initial Drift:                    | 0.558 NM             |
| INS Drift Rate:                   | 8.0 NM/Hour          |
| Range Mode:                       | OSV                  |
| RNP Edges:                        | Evaluated            |
| Min DME Range:                    | 3.0 NM               |
| DME Types:                        | DME, VOR-DME, VORTAC |
| DME Include Angles:               | 30 to 150            |
| Critical DMEs:                    | Allowed              |
| DoD Facilities:                   | Not included         |
| Foreign Facilities:               | Included             |
| High DMEs:                        | Included             |
| Low DMEs:                         | Included             |
| Terminal DMEs:                    | Included             |
| Flight Check DMEs:                | Not selected         |
| Higher Altitudes:                 | Not Evaluated        |
| Near Maximum Altitude:            | Not Evaluated        |
| Automatic ESVs:                   | Not enabled          |
| Disabled DMEs:                    | ZFP,ZQA,ZTC          |

| DME/DME (Continued) |      |  |        |       |      |        |          |          |       |          |
|---------------------|------|--|--------|-------|------|--------|----------|----------|-------|----------|
| DMEs Used           |      |  |        |       |      |        |          |          |       |          |
| #                   | Name | Lat/Lon                                | MAGVAR | Range | Type | Source | Critical | Status   | Time  | Distance |
| 1                   | PHK  | N26° 46' 57.873",<br>W080° 41' 29.157" | 0.0 E  | 130   | H    | IFPA   | NO       | Enabled  | 100 % | 100 %    |
| 2                   | RSW  | N26° 31' 47.551",<br>W081° 46' 32.764" | 2.0 W  | 40    | L    | IFPA   | NO       | Enabled  |       |          |
| 3                   | DHP  | N25° 47' 59.866",<br>W080° 20' 56.526" | 4.0 W  | 130   | H    | IFPA   | NO       | Enabled  | 100 % | 100 %    |
| 4                   | PBI  | N26° 40' 48.198",<br>W080° 05' 11.359" | 3.0 W  | 130   | H    | IFPA   | NO       | Enabled  | 100 % | 100 %    |
| 5                   | ZFP  | N26° 33' 19.250",<br>W078° 41' 52.250" | 3.0 W  | 130   | H    | IFPA   | NO       | Disabled |       |          |
| 6                   | ZQA  | N25° 01' 31.860",<br>W077° 26' 47.140" | 6.0 W  | 130   | H    | IFPA   | NO       | Disabled |       |          |
| 7                   | ZTC  | N26° 44' 05.000",<br>W077° 22' 45.000" | 5.0 W  | 130   | H    | IFPA   | NO       | Disabled |       |          |

| Flight Check DME Selection |               |     |     |     |  |           |
|----------------------------|---------------|-----|-----|-----|--|-----------|
| Distance [NM]              | Selected DMEs |     |     |     |  | Alternate |
| 0.0                        | PBI           | RSW | PHK | DHP |  |           |
| 0.1                        | PHK           | DHP | PBI |     |  |           |

| Inertial Drift Segments |                |              |             |
|-------------------------|----------------|--------------|-------------|
| #                       | Start Location | End Location | Length [NM] |

| Available DMEs by Waypoints |                |                    |
|-----------------------------|----------------|--------------------|
| Waypoint Before             | Waypoint After | DME List           |
| BHHIA                       | CEMDI          | PHK, PBI, RSW, DHP |



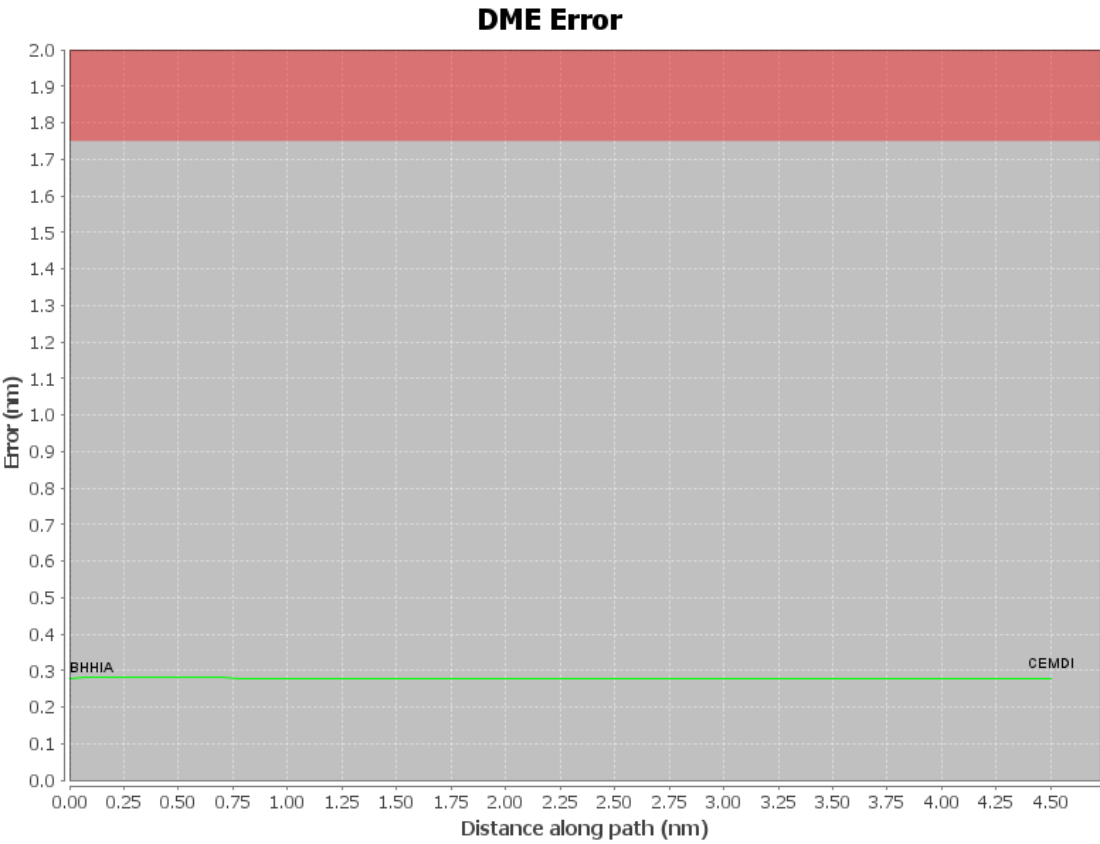
# DME DME Assessment Results for BHHIA1 path BHHIA\_CEMDI

## User Data Files

| # | File Name  |
|---|--|
| 1 | UserDMEsKFLL [IFPA] BAHIA1 RNAV STAR_20210106_1600 EST.udt |

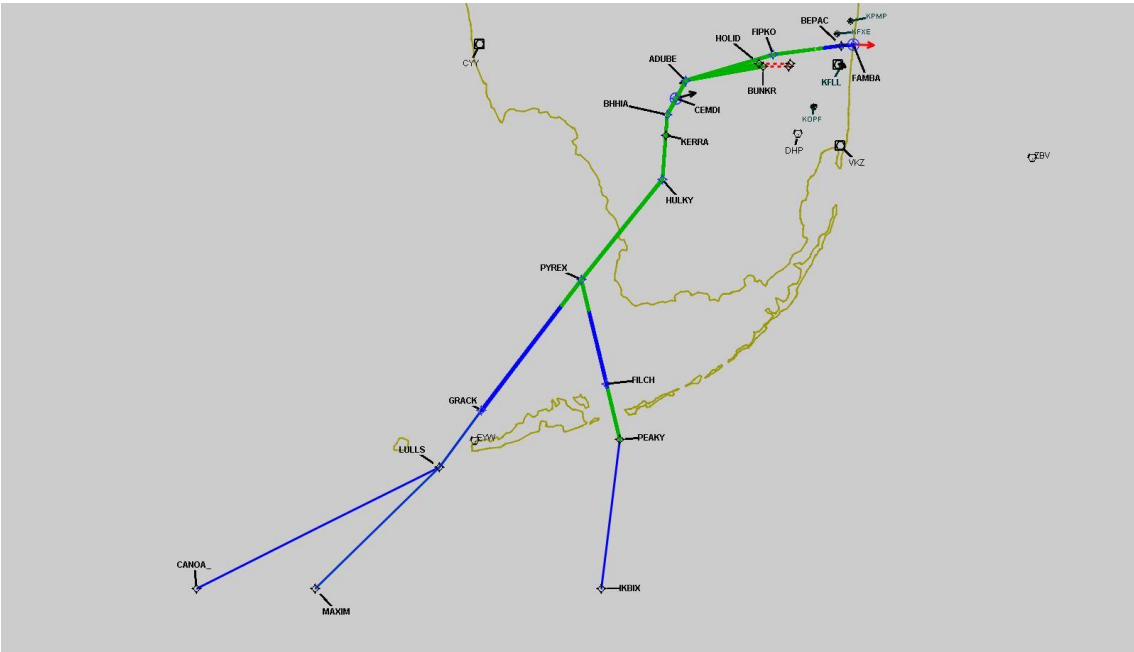
## User DMEs

| #    | Name                             | Lat/Lon   | MAGVAR | Range | Elevation [ft] | Frequency  | Replaces           | Status |
|------|----------------------------------|---|--------|-------|----------------|--|--------------------|--------|
| 1    | PBI FAA 882483-44<br>PBI [IFPA]  | N26° 40' 48.198",<br>W080° 05' 11.359"                              | 3.0 W  | 130   | 15.7           | 115.7  | PBI FAA 882483-44  |        |
| ESV: |                                  | Bearing [True]: 193.0° to 248.0°<br>Bearing [Mag]: 196.0° to 251.0° |        |       |                | Arc Distance: Out to 73.0 NM<br>Altitude: 3000.0 to 16000.0 ft |                    |        |
| 2    | DHP FAA 955265-050<br>DHP [IFPA] | N25° 47' 59.866",<br>W080° 20' 56.526"                              | 4.0 W  | 130   | 5.9            | 113.9  | DHP FAA 955265-050 |        |
| ESV: |                                  | Bearing [True]: 216.0° to 266.0°<br>Bearing [Mag]: 220.0° to 270.0° |        |       |                | Arc Distance: Out to 98.0 NM<br>Altitude: 6900.0 to 18000.0 ft |                    |        |
| 3    | PHK FAA 900991-11<br>PHK [IFPA]  | N26° 46' 57.873",<br>W080° 41' 29.157"                              | 0.0 E  | 130   | 15.5           | 115.4  | PHK FAA 900991-11  |        |
| ESV: |                                  | Bearing [True]: 185.0° to 225.0°<br>Bearing [Mag]: 185.0° to 225.0° |        |       |                | Arc Distance: Out to 65.0 NM<br>Altitude: 5000.0 to 11000.0 ft |                    |        |
| 4    | RSW FAA 191354-013<br>RSW [IFPA] | N26° 31' 47.551",<br>W081° 46' 32.764"                              | 2.0 W  | 40    | 25             | 111.8  | RSW FAA 191354-013 |        |
| ESV: |                                  | Bearing [True]: 118.0° to 178.0°<br>Bearing [Mag]: 120.0° to 180.0° |        |       |                | Arc Distance: Out to 90.0 NM<br>Altitude: 6000.0 to 15000.0 ft |                    |        |
| 5    | PHK FAA 900991-49<br>PHK [IFPA]  | N26° 46' 57.873",<br>W080° 41' 29.157"                              | 0.0 E  | 130   | 15.5           | 115.4  | PHK FAA 900991-49  |        |
| ESV: |                                  | Bearing [True]: 178.0° to 202.0°<br>Bearing [Mag]: 178.0° to 202.0° |        |       |                | Arc Distance: Out to 95.0 NM<br>Altitude: 6000.0 to 16000.0 ft |                    |        |
| 6    | EYW FAA 701364-019<br>EYW [IFPA] | N24° 35' 09.162",<br>W081° 48' 01.715"                              | 1.0 E  | 130   | 10             | 113.5  | EYW FAA 701364-019 |        |
| ESV: |                                  | Bearing [True]: 11.0° to 46.0°<br>Bearing [Mag]: 10.0° to 45.0°     |        |       |                | Arc Distance: Out to 90.0 NM<br>Altitude: 6900.0 to 15000.0 ft |                    |        |
| 7    | VKZ FAA 671324-57<br>VKZ [IFPA]  | N25° 45' 06.846",<br>W080° 09' 15.996"                              | 4.0 W  | 130   | 10.5           | 117.1  | VKZ FAA 671324-57  |        |
| ESV: |                                  | Bearing [True]: 240.0° to 260.0°<br>Bearing [Mag]: 244.0° to 264.0° |        |       |                | Arc Distance: Out to 70.0 NM<br>Altitude: 4500.0 to 18000.0 ft |                    |        |



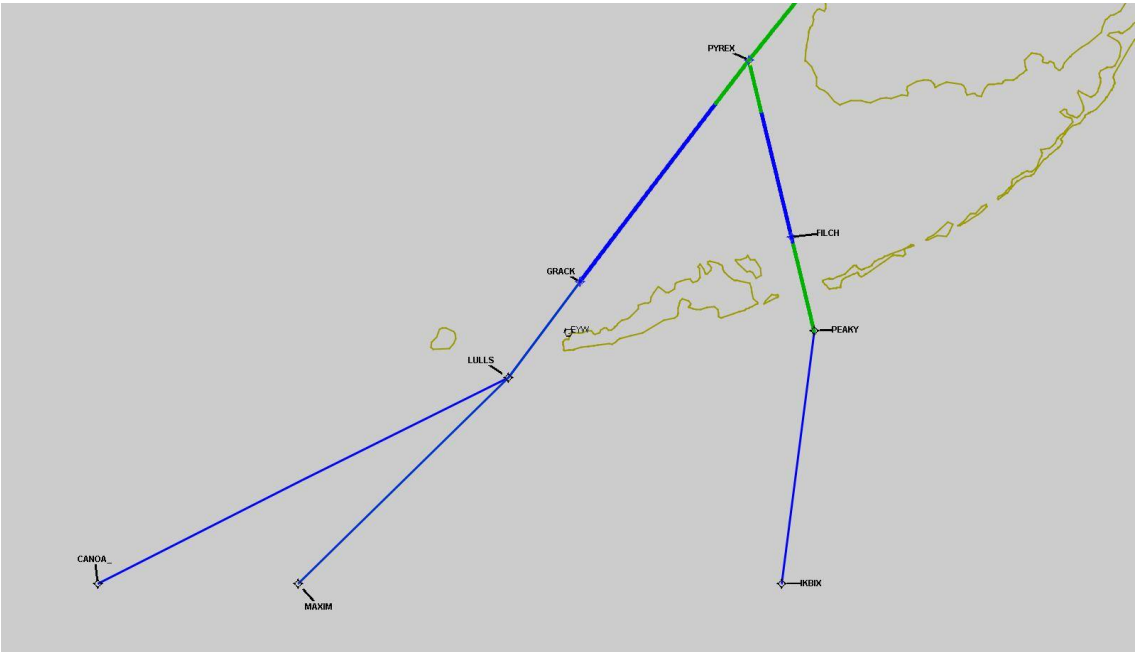
DME DME Assessment Results for BHHIA1 path BHHIA\_CEMDI

Graphic Depiction 1



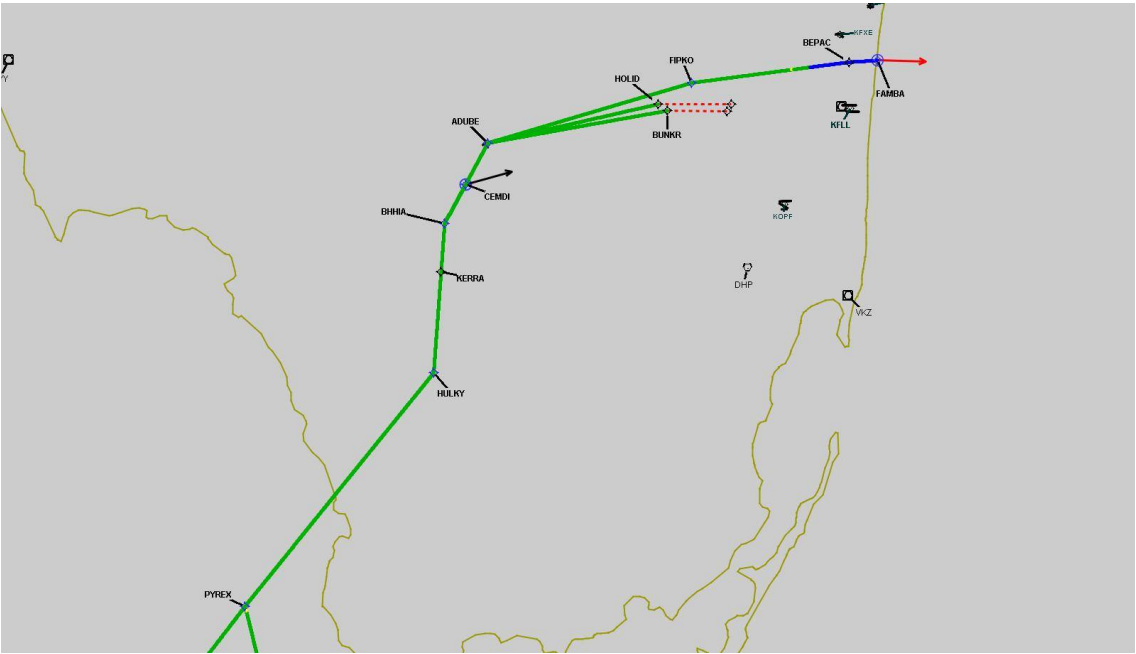
DME DME Assessment Results for BHHIA1 path BHHIA\_CEMDI

Graphic Depiction 2



DME DME Assessment Results for BHHIA1 path BHHIA\_CEMDI

Graphic Depiction 3



## DME DME Assessment Results for BHHIA1 path CANOA\_\_FAMBA

### Results Summary

|                            |   |
|----------------------------|---|
| Flyability:                | Completed   |
| DME/DME:                   | Completed - No Critical DMEs  |
| Name:                      | Miles CTR Carpenter   |
| Project File:              | C:\Users\Miles CTR Carpenter\Desktop\KFLI STARs DME\KFLI BHHIA STAR DME\KFLI BHHIA1 STAR DME_03.17.2021.tgs   |
| Output File:               | C:\Users\Miles CTR Carpenter\Desktop\KFLI STARs DME\KFLI BHHIA STAR DME\KFLI [IFPA] BHHIA1 20210317_0728 EDT\CANOA__FAMBA\KFLI BHHIA1 RNAV STAR CANOA FAMBA 20210317_0728 EDT.pdf |
| Procedure Name:            | BHHIA1  |
| Software:<br>DmeDmePlugin: | 6.2.0   |
| Date/Time:                 | 03/17/2021 07:28 EDT  |
| Databases:                 | DTED 0max   |

### Failures

No Failures

### Warnings

|           |  |
|-----------|--|
| GNSS_ONLY | CANOA_____LULLS is GNSS Only and was not evaluated |
| GNSS_ONLY | LULLS_____GRACK is GNSS Only and was not evaluated |

### Notes For Flight Check

None

### Flight Plan

| Name   | Type | Lat/Lon                                | Altitude (ft) | VNAV Mode | Ground Speed (kts) | Turn Type | Leg Type |
|--------|------|--|---------------|-----------|--------------------|-----------|----------|
| CANOA_ | WP   | N24° 00' 00.000",<br>W083° 03' 00.000" | 18000         | VNAV      | 280                | FLY_BY    | TF       |
| LULLS  | WP   | N24° 28' 51.840",<br>W081° 57' 38.550" | 18000         | VNAV      | 280                | FLY_BY    | TF       |
| GRACK  | WP   | N24° 42' 17.664",<br>W081° 46' 13.853" | 18000         | VNAV      | 280                | FLY_BY    | TF       |
| PYREX  | WP   | N25° 13' 22.290",<br>W081° 19' 18.380" | 15000         | VNAV      | 280                | FLY_BY    | TF       |
| HULKY  | WP   | N25° 37' 14.120",<br>W080° 57' 24.850" | 7000          | VNAV      | 280                | FLY_BY    | TF       |
| KERRA  | WP   | N25° 47' 35.946",<br>W080° 56' 33.045" | 6000          | VNAV      | 280                | FLY_BY    | TF       |
| BHHIA  | WP   | N25° 52' 32.490",<br>W080° 56' 08.286" | 6000          | VNAV      | 280                | FLY_BY    | TF       |
| ADUBE  | WP   | N26° 00' 44.710",<br>W080° 51' 06.540" | 6000          | VNAV      | 280                | FLY_BY    | TF       |
| FIPKO  | WP   | N26° 06' 53.352",<br>W080° 27' 29.922" | 6000          | VNAV      | 280                | FLY_BY    | TF       |
| BEPAC  | WP   | N26° 09' 00.590",<br>W080° 09' 11.720" | 5000          | VNAV      | 280                | FLY_BY    | TF       |
| FAMBA  | WP   | N26° 09' 11.630",<br>W080° 05' 52.060" | 5000          | VNAV      | 280                | FLY_OVER  | TF       |

### Flyability

|                        |                                 |
|------------------------|---------------------------------|
| Flight Type:           | RNAV_STAR                       |
| Selected Airport:      | KFLI [IFPA]                     |
| Climb Gradient:        | None assigned                   |
| Speeds:                | 200 Ground Speed to 11000 FT    |
|                        | 240 Ground Speed to 18000 FT    |
|                        | 260 Ground Speed to 24000 FT    |
|                        | 340 Ground Speed above 24000 FT |
| Descent During a Turn: | Allowed                         |
| VNAV Mode:             | Flight Plan                     |

## DME DME Assessment Results for BHHIA1 path CANOA\_\_FAMBA

| DME/DME                           |                      |
|-----------------------------------|----------------------|
| RNP:                              | RNP 2                |
| Flight Mode:                      | Manual               |
| Line of Sight (DTED Level 0 Max): | Evaluated            |
| Inertial Drift:                   | Enabled              |
| Initial Drift:                    | 0.558 NM             |
| INS Drift Rate:                   | 8.0 NM/Hour          |
| Range Mode:                       | OSV                  |
| RNP Edges:                        | Evaluated            |
| Min DME Range:                    | 3.0 NM               |
| DME Types:                        | DME, VOR-DME, VORTAC |
| DME Include Angles:               | 30 to 150            |
| Critical DMEs:                    | Allowed              |
| DoD Facilities:                   | Not included         |
| Foreign Facilities:               | Included             |
| High DMEs:                        | Included             |
| Low DMEs:                         | Included             |
| Terminal DMEs:                    | Included             |
| Flight Check DMEs:                | Not selected         |
| Higher Altitudes:                 | Not Evaluated        |
| Near Maximum Altitude:            | Not Evaluated        |
| Automatic ESVs:                   | Not enabled          |
| Disabled DMEs:                    | ZFP,ZQA,ZTC          |

| DME/DME (Continued) |      |  |        |       |      |        |          |          |        |          |
|---------------------|------|--|--------|-------|------|--------|----------|----------|--------|----------|
| DMEs Used           |      |  |        |       |      |        |          |          |        |          |
| #                   | Name | Lat/Lon                                | MAGVAR | Range | Type | Source | Critical | Status   | Time   | Distance |
| 1                   | PHK  | N26° 46' 57.873",<br>W080° 41' 29.157" | 0.0 E  | 130   | H    | IFPA   | NO       | Enabled  | 26.6 % | 26.7 %   |
| 2                   | EYW  | N24° 35' 09.162",<br>W081° 48' 01.715" | 1.0 E  | 130   | H    | IFPA   | NO       | Enabled  | 17.7 % | 17.7 %   |
| 3                   | VKZ  | N25° 45' 06.846",<br>W080° 09' 15.996" | 4.0 W  | 130   | H    | IFPA   | NO       | Enabled  | 27.3 % | 27.3 %   |
| 4                   | FLL  | N26° 04' 26.183",<br>W080° 09' 59.192" | 6.0 W  | 130   | H    | IFPA   | NO       | Enabled  | 19.6 % | 19.6 %   |
| 5                   | RSW  | N26° 31' 47.551",<br>W081° 46' 32.764" | 2.0 W  | 40    | L    | IFPA   | NO       | Enabled  | 29.4 % | 29.4 %   |
| 6                   | DHP  | N25° 47' 59.866",<br>W080° 20' 56.526" | 4.0 W  | 130   | H    | IFPA   | NO       | Enabled  | 44.5 % | 44.5 %   |
| 7                   | PBI  | N26° 40' 48.198",<br>W080° 05' 11.359" | 3.0 W  | 130   | H    | IFPA   | NO       | Enabled  | 22.2 % | 22.2 %   |
| 8                   | ZFP  | N26° 33' 19.250",<br>W078° 41' 52.250" | 3.0 W  | 130   | H    | IFPA   | NO       | Disabled |        |          |
| 9                   | ZQA  | N25° 01' 31.860",<br>W077° 26' 47.140" | 6.0 W  | 130   | H    | IFPA   | NO       | Disabled |        |          |
| 10                  | ZTC  | N26° 44' 05.000",<br>W077° 22' 45.000" | 5.0 W  | 130   | H    | IFPA   | NO       | Disabled |        |          |

# DME DME Assessment Results for BHHIA1 path CANOA\_\_FAMBA

| Flight Check DME Selection |               |     |     |     |     |           |
|----------------------------|---------------|-----|-----|-----|-----|-----------|
| Distance [NM]              | Selected DMEs |     |     |     |     | Alternate |
| 0.0                        |               |     |     |     |     |           |
| 31.7                       | RSW           | VKZ | DHP | FLL | EYW |           |
| 40.5                       | DHP           | RSW | EYW |     |     |           |
| 42.3                       | RSW           | VKZ | DHP | EYW |     |           |
| 46.0                       | RSW           | VKZ | DHP | EYW | PHK |           |
| 65.8                       | DHP           | RSW | EYW | PHK |     |           |
| 70.7                       | RSW           | DHP | PHK |     |     |           |
| 80.6                       | PBI           | RSW | PHK | DHP |     |           |
| 95.2                       | PBI           | RSW | PHK | DHP | FLL |           |
| 96.4                       | PHK           | FLL | DHP | PBI |     |           |
| 99.9                       | PHK           | FLL | PBI | DHP | VKZ |           |
| 104.7                      | PBI           | DHP | VKZ | FLL |     |           |
| 128.0                      | FLL           | PBI | DHP |     |     |           |
| 129.6                      |               |     |     |     |     |           |

| Inertial Drift Segments |                                     |                                     |             |  |
|-------------------------|-------------------------------------|-------------------------------------|-------------|--|
| #                       | Start Location                      | End Location                        | Length [NM] |  |
| 1                       | N24° 42' 17.664", W081° 46' 13.853" | N25° 07' 15.634", W081° 24' 37.459" | 31.7056     |  |
| 2                       | N26° 08' 28.703", W080° 13' 48.899" | N26° 09' 11.630", W080° 05' 52.060" | 7.1813      |  |

| Available DMEs by Waypoints |                |                              |
|-----------------------------|----------------|------------------------------|
| Waypoint Before             | Waypoint After | DME List                     |
| CANOA__                     | LULLS          |                              |
| LULLS                       | GRACK          |                              |
| GRACK                       | PYREX          | EYW, VKZ, RSW, FLL, DHP      |
| PYREX                       | HULKY          | EYW, PHK, VKZ, RSW, FLL, DHP |
| HULKY                       | KERRA          | PHK, EYW, PBI, RSW, DHP      |
| KERRA                       | BHHIA          | PHK, PBI, RSW, DHP           |
| BHHIA                       | ADUBE          | PHK, PBI, RSW, DHP           |
| ADUBE                       | FIPKO          | PHK, VKZ, PBI, FLL, RSW, DHP |
| FIPKO                       | BEPAC          | VKZ, PBI, FLL, DHP           |
| BEPAC                       | FAMBA          |                              |



# DME DME Assessment Results for BHIA1 path CANOA\_FAMBA

## User Data Files

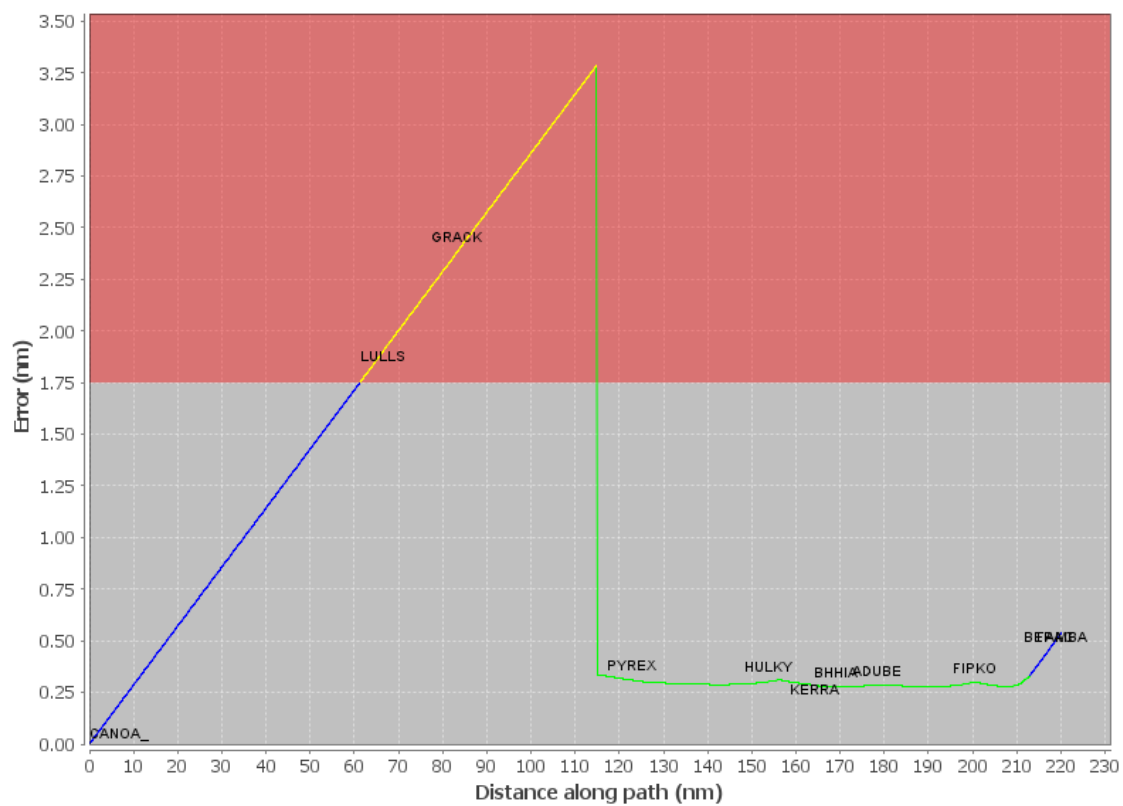
| # | File Name  |
|---|--|
| 1 | UserDMEsKFLL [IFPA] BAHIA1 RNAV STAR_20210106_1600 EST.udt |

## User DMEs

| #    | Name                             | Lat/Lon   | MAGVAR | Range | Elevation [ft] | Frequency  | Replaces           | Status |
|------|----------------------------------|---|--------|-------|----------------|--|--------------------|--------|
| 1    | PBI FAA 882483-44<br>PBI [IFPA]  | N26° 40' 48.198",<br>W080° 05' 11.359"                              | 3.0 W  | 130   | 15.7           | 115.7  | PBI FAA 882483-44  |        |
| ESV: |                                  | Bearing [True]: 193.0° to 248.0°<br>Bearing [Mag]: 196.0° to 251.0° |        |       |                | Arc Distance: Out to 73.0 NM<br>Altitude: 3000.0 to 16000.0 ft |                    |        |
| 2    | DHP FAA 955265-050<br>DHP [IFPA] | N25° 47' 59.866",<br>W080° 20' 56.526"                              | 4.0 W  | 130   | 5.9            | 113.9  | DHP FAA 955265-050 |        |
| ESV: |                                  | Bearing [True]: 216.0° to 266.0°<br>Bearing [Mag]: 220.0° to 270.0° |        |       |                | Arc Distance: Out to 98.0 NM<br>Altitude: 6900.0 to 18000.0 ft |                    |        |
| 3    | PHK FAA 900991-11<br>PHK [IFPA]  | N26° 46' 57.873",<br>W080° 41' 29.157"                              | 0.0 E  | 130   | 15.5           | 115.4  | PHK FAA 900991-11  |        |
| ESV: |                                  | Bearing [True]: 185.0° to 225.0°<br>Bearing [Mag]: 185.0° to 225.0° |        |       |                | Arc Distance: Out to 65.0 NM<br>Altitude: 5000.0 to 11000.0 ft |                    |        |
| 4    | RSW FAA 191354-013<br>RSW [IFPA] | N26° 31' 47.551",<br>W081° 46' 32.764"                              | 2.0 W  | 40    | 25             | 111.8  | RSW FAA 191354-013 |        |
| ESV: |                                  | Bearing [True]: 118.0° to 178.0°<br>Bearing [Mag]: 120.0° to 180.0° |        |       |                | Arc Distance: Out to 90.0 NM<br>Altitude: 6000.0 to 15000.0 ft |                    |        |
| 5    | PHK FAA 900991-49<br>PHK [IFPA]  | N26° 46' 57.873",<br>W080° 41' 29.157"                              | 0.0 E  | 130   | 15.5           | 115.4  | PHK FAA 900991-49  |        |
| ESV: |                                  | Bearing [True]: 178.0° to 202.0°<br>Bearing [Mag]: 178.0° to 202.0° |        |       |                | Arc Distance: Out to 95.0 NM<br>Altitude: 6000.0 to 16000.0 ft |                    |        |
| 6    | EYW FAA 701364-019<br>EYW [IFPA] | N24° 35' 09.162",<br>W081° 48' 01.715"                              | 1.0 E  | 130   | 10             | 113.5  | EYW FAA 701364-019 |        |
| ESV: |                                  | Bearing [True]: 11.0° to 46.0°<br>Bearing [Mag]: 10.0° to 45.0°     |        |       |                | Arc Distance: Out to 90.0 NM<br>Altitude: 6900.0 to 15000.0 ft |                    |        |
| 7    | VKZ FAA 671324-57<br>VKZ [IFPA]  | N25° 45' 06.846",<br>W080° 09' 15.996"                              | 4.0 W  | 130   | 10.5           | 117.1  | VKZ FAA 671324-57  |        |
| ESV: |                                  | Bearing [True]: 240.0° to 260.0°<br>Bearing [Mag]: 244.0° to 264.0° |        |       |                | Arc Distance: Out to 70.0 NM<br>Altitude: 4500.0 to 18000.0 ft |                    |        |

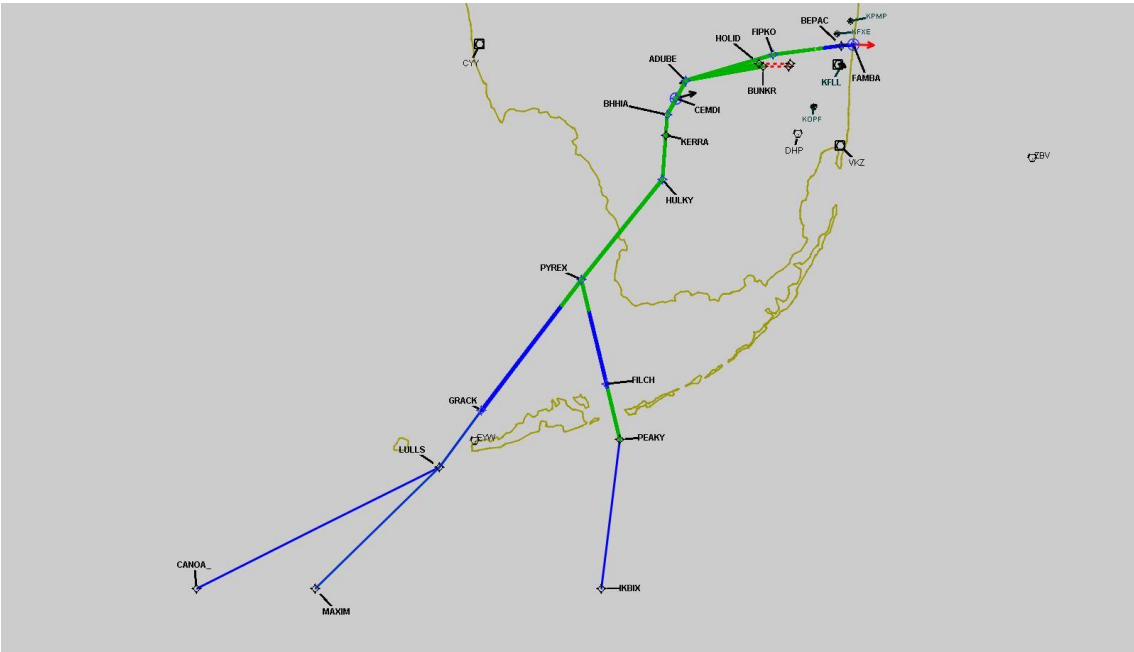
## DME DME Assessment Results for BHHIA1 path CANOA\_\_FAMBA

### DME Error

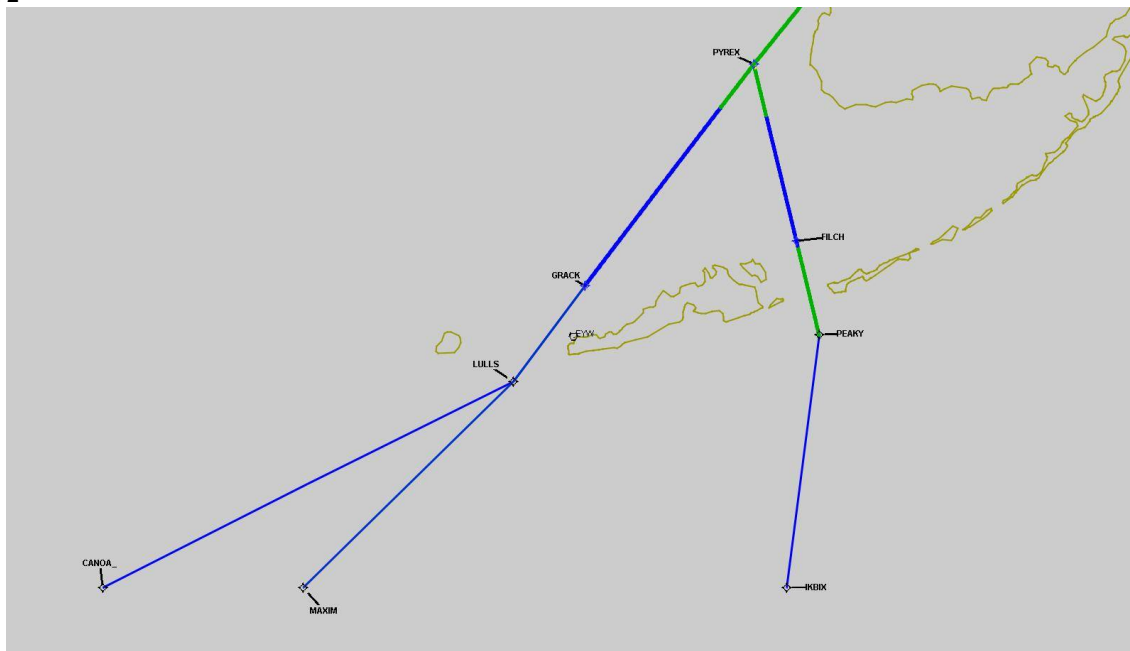


DME DME Assessment Results for BHHIA1 path CANOA\_\_FAMBA

Graphic Depiction 1

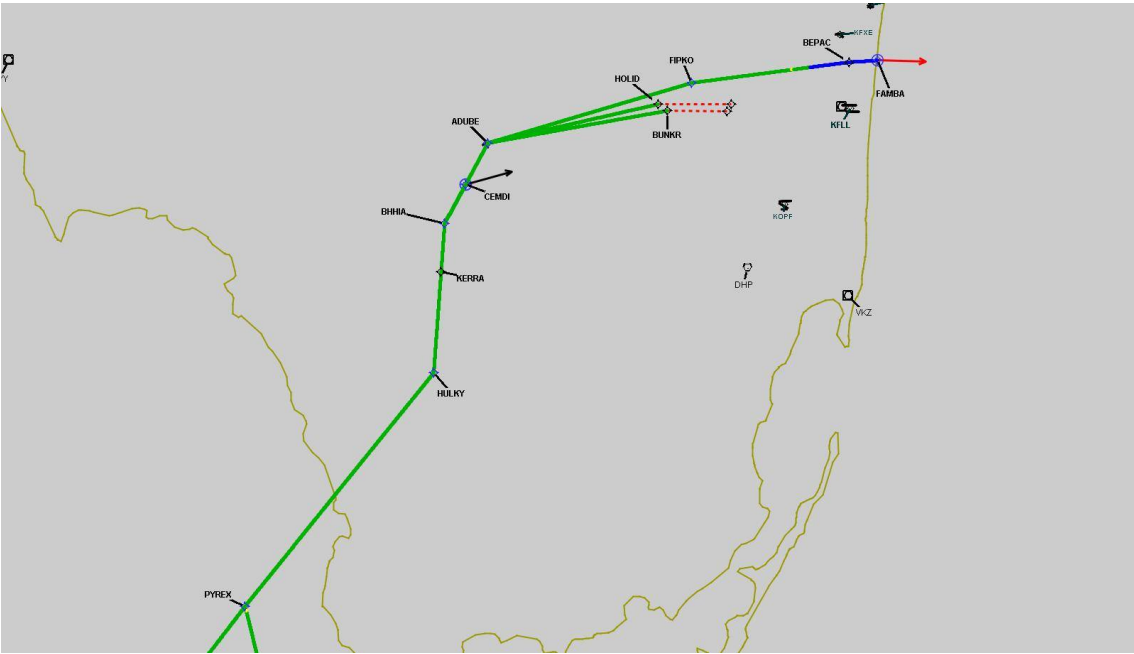


### Graphic Depiction 2



DME DME Assessment Results for BHHIA1 path CANOA\_\_FAMBA

Graphic Depiction 3



## DME DME Assessment Results for BHHIA1 path IKBIX\_PYREX

### Results Summary

|                            |  |
|----------------------------|--|
| Flyability:                | Completed  |
| DME/DME:                   | Completed - No Critical DMEs   |
| Name:                      | Miles CTR Carpenter  |
| Project File:              | C:\Users\Miles CTR Carpenter\Desktop\KFLB STARs DME\KFLB BHHIA STAR DME\KFLB BHHIA1 STAR DME_03.17.2021.tgs  |
| Output File:               | C:\Users\Miles CTR Carpenter\Desktop\KFLB STARs DME\KFLB BHHIA STAR DME\KFLB [IFPA] BHHIA1 20210317_0728 EDT\IKBIX_PYREX\KFLB BHHIA1 RNAV STAR IKBIX PYREX 20210317_0728 EDT.pdf |
| Procedure Name:            | BHHIA1   |
| Software:<br>DmeDmePlugin: | 6.2.0  |
| Date/Time:                 | 03/17/2021 07:28 EDT   |
| Databases:                 | DTED 0max  |

### Failures

No Failures

### Warnings

GNSS\_ONLY IKBIX\_\_\_\_\_PEAKY is GNSS Only and was not evaluated

### Notes For Flight Check

None

### Flight Plan

| Name  | Type | Lat/Lon                                | Altitude (ft) | VNAV Mode | Ground Speed (kts) | Turn Type | Leg Type |
|-------|------|--|---------------|-----------|--------------------|-----------|----------|
| IKBIX | WP   | N24° 00' 00.000",<br>W081° 14' 00.000" | 18000         | VNAV      | 280                | FLY_BY    | TF       |
| PEAKY | WP   | N24° 35' 23.720",<br>W081° 08' 53.910" | 18000         | VNAV      | 280                | FLY_BY    | TF       |
| FILCH | WP   | N24° 48' 34.388",<br>W081° 12' 29.857" | 18000         | VNAV      | 280                | FLY_BY    | TF       |
| PYREX | WP   | N25° 13' 22.290",<br>W081° 19' 18.380" | 15000         | VNAV      | 280                | FLY_BY    | TF       |

### Flyability

|                        |                                 |
|------------------------|---------------------------------|
| Flight Type:           | RNAV_STAR                       |
| Selected Airport:      | KFLB [IFPA]                     |
| Climb Gradient:        | None assigned                   |
| Speeds:                | 200 Ground Speed to 11000 FT    |
|                        | 240 Ground Speed to 18000 FT    |
|                        | 260 Ground Speed to 24000 FT    |
|                        | 340 Ground Speed above 24000 FT |
| Descent During a Turn: | Allowed                         |
| VNAV Mode:             | Flight Plan                     |

## DME DME Assessment Results for BHHIA1 path IKBIX\_PYREX

| DME/DME                           |                      |
|-----------------------------------|----------------------|
| RNP:                              | RNP 2                |
| Flight Mode:                      | Manual               |
| Line of Sight (DTED Level 0 Max): | Evaluated            |
| Inertial Drift:                   | Enabled              |
| Initial Drift:                    | 0.558 NM             |
| INS Drift Rate:                   | 8.0 NM/Hour          |
| Range Mode:                       | OSV                  |
| RNP Edges:                        | Evaluated            |
| Min DME Range:                    | 3.0 NM               |
| DME Types:                        | DME, VOR-DME, VORTAC |
| DME Include Angles:               | 30 to 150            |
| Critical DMEs:                    | Allowed              |
| DoD Facilities:                   | Not included         |
| Foreign Facilities:               | Included             |
| High DMEs:                        | Included             |
| Low DMEs:                         | Included             |
| Terminal DMEs:                    | Included             |
| Flight Check DMEs:                | Not selected         |
| Higher Altitudes:                 | Not Evaluated        |
| Near Maximum Altitude:            | Not Evaluated        |
| Automatic ESVs:                   | Not enabled          |
| Disabled DMEs:                    | ZFP,ZQA,ZTC          |

| DME/DME (Continued) |      |  |        |       |      |        |          |          |        |          |
|---------------------|------|--|--------|-------|------|--------|----------|----------|--------|----------|
| DMEs Used           |      |  |        |       |      |        |          |          |        |          |
| #                   | Name | Lat/Lon                                | MAGVAR | Range | Type | Source | Critical | Status   | Time   | Distance |
| 1                   | PHK  | N26° 46' 57.873",<br>W080° 41' 29.157" | 0.0 E  | 130   | H    | IFPA   | NO       | Enabled  | 0.6 %  | 0.6 %    |
| 2                   | EYW  | N24° 35' 09.162",<br>W081° 48' 01.715" | 1.0 E  | 130   | H    | IFPA   | NO       | Enabled  | 27 %   | 27 %     |
| 3                   | VKZ  | N25° 45' 06.846",<br>W080° 09' 15.996" | 4.0 W  | 130   | H    | IFPA   | NO       | Enabled  | 22.3 % | 22.3 %   |
| 4                   | FLL  | N26° 04' 26.183",<br>W080° 09' 59.192" | 6.0 W  | 130   | H    | IFPA   | NO       | Enabled  | 13.7 % | 13.7 %   |
| 5                   | RSW  | N26° 31' 47.551",<br>W081° 46' 32.764" | 2.0 W  | 40    | L    | IFPA   | NO       | Enabled  | 10 %   | 10 %     |
| 6                   | DHP  | N25° 47' 59.866",<br>W080° 20' 56.526" | 4.0 W  | 130   | H    | IFPA   | NO       | Enabled  | 26.1 % | 26.1 %   |
| 7                   | ZFP  | N26° 33' 19.250",<br>W078° 41' 52.250" | 3.0 W  | 130   | H    | IFPA   | NO       | Disabled |        |          |
| 8                   | ZQA  | N25° 01' 31.860",<br>W077° 26' 47.140" | 6.0 W  | 130   | H    | IFPA   | NO       | Disabled |        |          |
| 9                   | ZTC  | N26° 44' 05.000",<br>W077° 22' 45.000" | 5.0 W  | 130   | H    | IFPA   | NO       | Disabled |        |          |

| Flight Check DME Selection |               |     |     |     |     |           |
|----------------------------|---------------|-----|-----|-----|-----|-----------|
| Distance [NM]              | Selected DMEs |     |     |     |     | Alternate |
| 0.0                        | EYW           | DHP | VKZ |     |     |           |
| 9.3                        | EYW           | DHP |     |     |     |           |
| 9.9                        | EYW           | DHP | FLL |     |     |           |
| 12.1                       | EYW           | FLL |     |     |     |           |
| 12.8                       |               |     |     |     |     |           |
| 31.6                       | RSW           | VKZ | DHP | EYW | FLL |           |

| Inertial Drift Segments |                                     |                                     |             |
|-------------------------|-------------------------------------|-------------------------------------|-------------|
| #                       | Start Location                      | End Location                        | Length [NM] |
| 1                       | N24° 47' 49.209", W081° 12' 17.497" | N25° 06' 06.847", W081° 17' 18.529" | 18.8004     |

# DME DME Assessment Results for BHHIA1 path IKBIX\_PYREX

## Available DMEs by Waypoints

| Waypoint Before | Waypoint After | DME List                     |
|-----------------|----------------|------------------------------|
| IKBIX           | PEAKY          |                              |
| PEAKY           | FILCH          | EYW, VKZ, FLL, DHP           |
| FILCH           | PYREX          | EYW, PHK, VKZ, RSW, FLL, DHP |

## User Data Files

| # | File Name  |
|---|--|
| 1 | UserDMEsKFLL [IFPA] BAHIA1 RNAV STAR_20210106_1600 EST.udt |

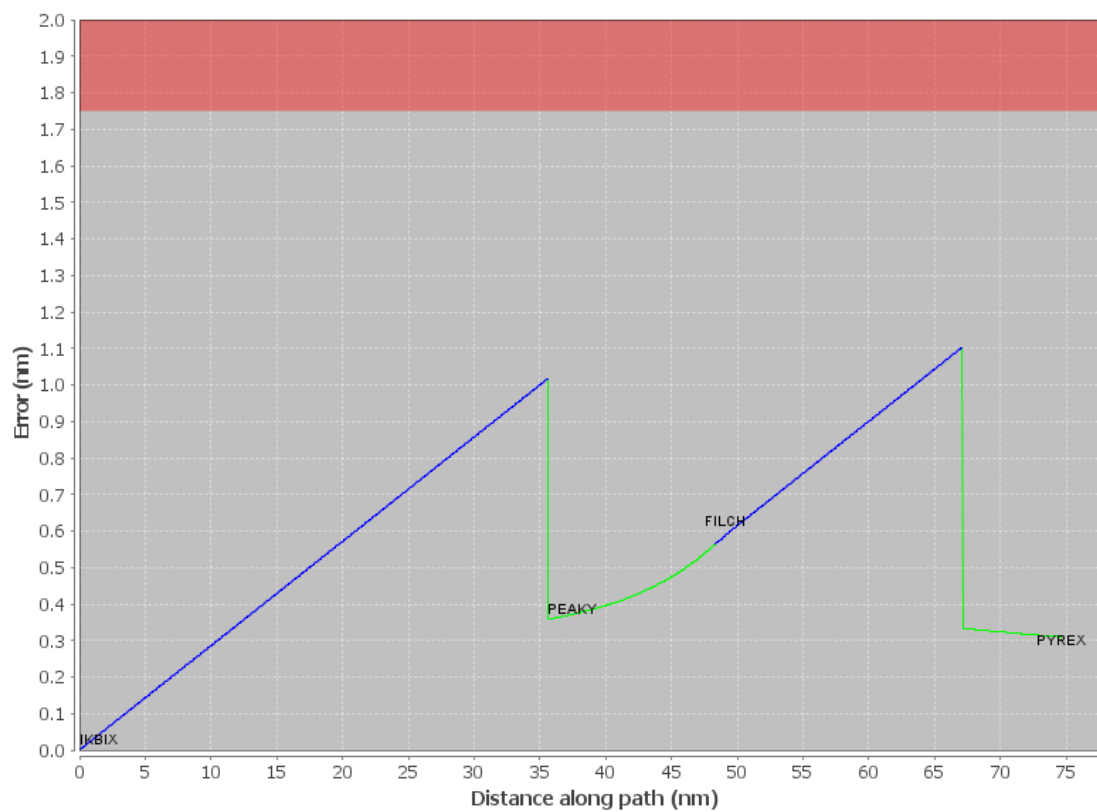
## User DMEs

| #    | Name                             | Lat/Lon   | MAGVAR | Range | Elevation [ft] | Frequency  | Replaces           | Status |
|------|----------------------------------|---|--------|-------|----------------|--|--------------------|--------|
| 1    | PBI FAA 882483-44<br>PBI [IFPA]  | N26° 40' 48.198",<br>W080° 05' 11.359"                              | 3.0 W  | 130   | 15.7           | 115.7  | PBI FAA 882483-44  |        |
| ESV: |                                  | Bearing [True]: 193.0° to 248.0°<br>Bearing [Mag]: 196.0° to 251.0° |        |       |                | Arc Distance: Out to 73.0 NM<br>Altitude: 3000.0 to 16000.0 ft |                    |        |
| 2    | DHP FAA 955265-050<br>DHP [IFPA] | N25° 47' 59.866",<br>W080° 20' 56.526"                              | 4.0 W  | 130   | 5.9            | 113.9  | DHP FAA 955265-050 |        |
| ESV: |                                  | Bearing [True]: 216.0° to 266.0°<br>Bearing [Mag]: 220.0° to 270.0° |        |       |                | Arc Distance: Out to 98.0 NM<br>Altitude: 6900.0 to 18000.0 ft |                    |        |
| 3    | PHK FAA 900991-11<br>PHK [IFPA]  | N26° 46' 57.873",<br>W080° 41' 29.157"                              | 0.0 E  | 130   | 15.5           | 115.4  | PHK FAA 900991-11  |        |
| ESV: |                                  | Bearing [True]: 185.0° to 225.0°<br>Bearing [Mag]: 185.0° to 225.0° |        |       |                | Arc Distance: Out to 65.0 NM<br>Altitude: 5000.0 to 11000.0 ft |                    |        |
| 4    | RSW FAA 191354-013<br>RSW [IFPA] | N26° 31' 47.551",<br>W081° 46' 32.764"                              | 2.0 W  | 40    | 25             | 111.8  | RSW FAA 191354-013 |        |
| ESV: |                                  | Bearing [True]: 118.0° to 178.0°<br>Bearing [Mag]: 120.0° to 180.0° |        |       |                | Arc Distance: Out to 90.0 NM<br>Altitude: 6000.0 to 15000.0 ft |                    |        |
| 5    | PHK FAA 900991-49<br>PHK [IFPA]  | N26° 46' 57.873",<br>W080° 41' 29.157"                              | 0.0 E  | 130   | 15.5           | 115.4  | PHK FAA 900991-49  |        |
| ESV: |                                  | Bearing [True]: 178.0° to 202.0°<br>Bearing [Mag]: 178.0° to 202.0° |        |       |                | Arc Distance: Out to 95.0 NM<br>Altitude: 6000.0 to 16000.0 ft |                    |        |
| 6    | EYW FAA 701364-019<br>EYW [IFPA] | N24° 35' 09.162",<br>W081° 48' 01.715"                              | 1.0 E  | 130   | 10             | 113.5  | EYW FAA 701364-019 |        |
| ESV: |                                  | Bearing [True]: 11.0° to 46.0°<br>Bearing [Mag]: 10.0° to 45.0°     |        |       |                | Arc Distance: Out to 90.0 NM<br>Altitude: 6900.0 to 15000.0 ft |                    |        |
| 7    | VKZ FAA 671324-57<br>VKZ [IFPA]  | N25° 45' 06.846",<br>W080° 09' 15.996"                              | 4.0 W  | 130   | 10.5           | 117.1  | VKZ FAA 671324-57  |        |
| ESV: |                                  | Bearing [True]: 240.0° to 260.0°<br>Bearing [Mag]: 244.0° to 264.0° |        |       |                | Arc Distance: Out to 70.0 NM<br>Altitude: 4500.0 to 18000.0 ft |                    |        |



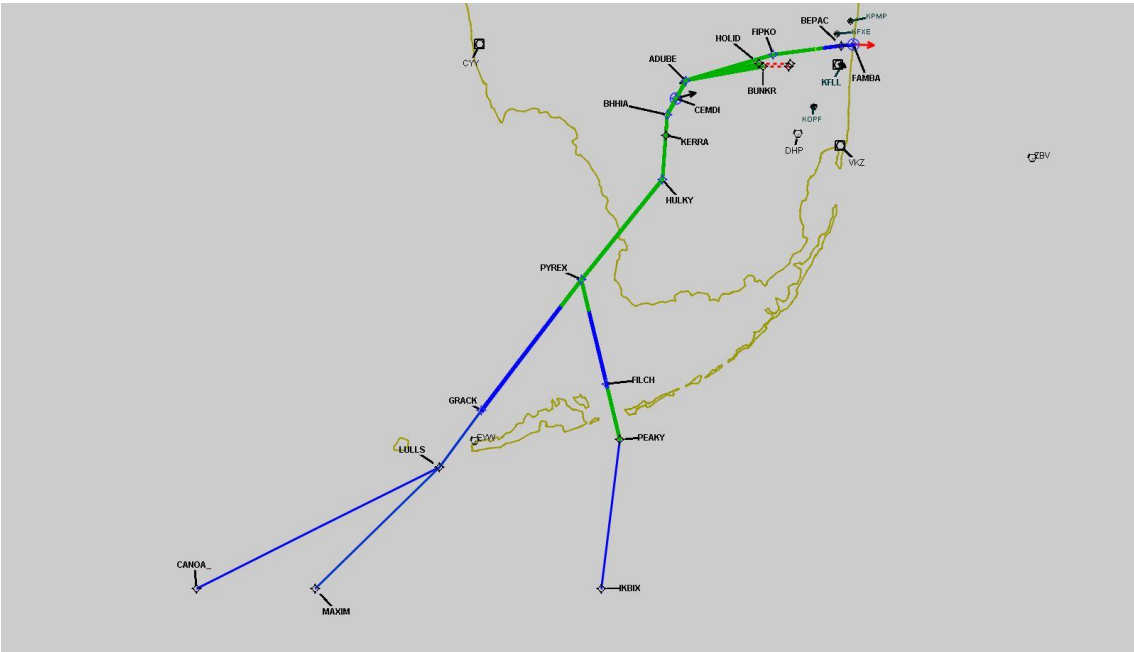
## DME DME Assessment Results for BHHIA1 path IKBIX\_PYREX

### DME Error



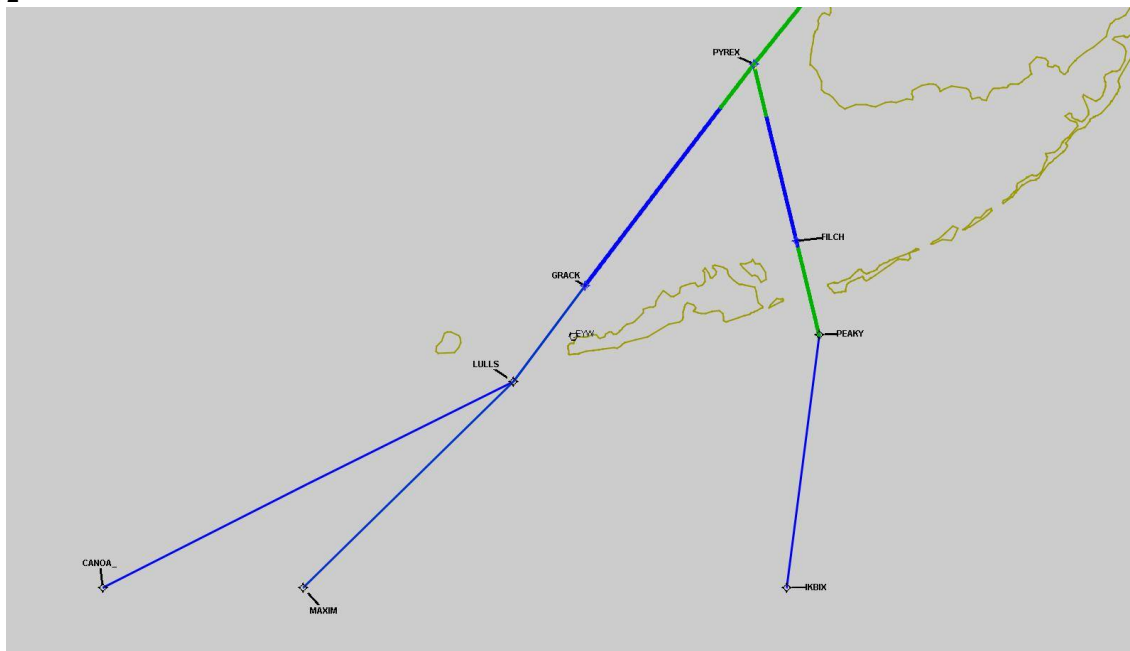
DME DME Assessment Results for BHHIA1 path IKBIX\_PYREX

Graphic Depiction 1



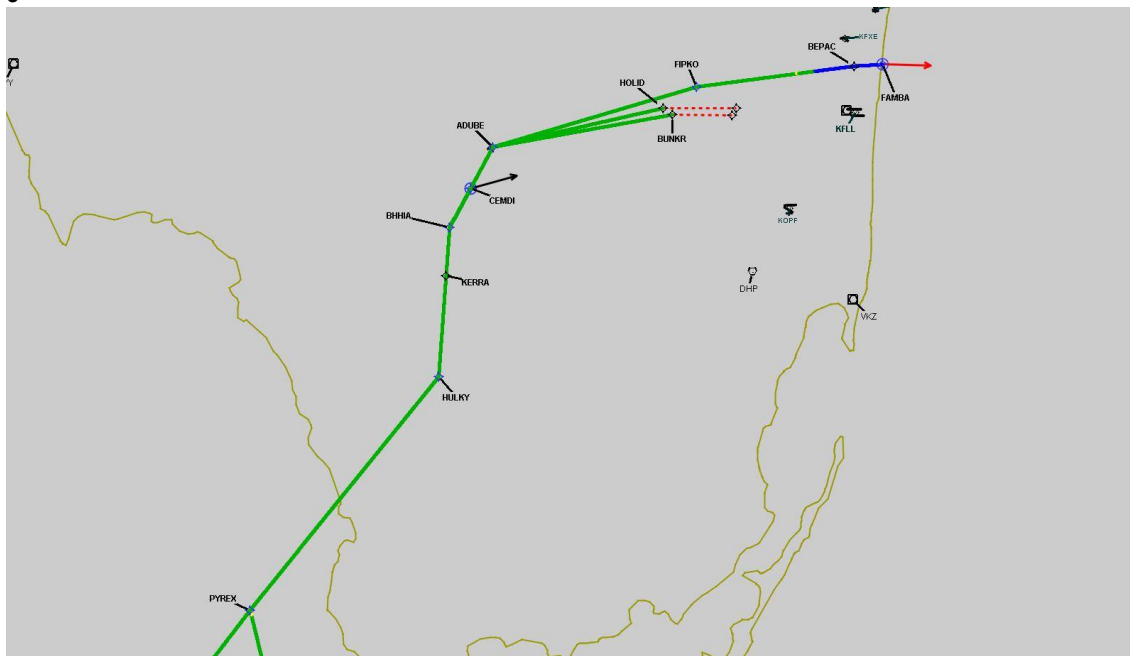
## DME DME Assessment Results for BHHIA1 path IKBIX\_PYREX

Graphic Depiction 2



# DME DME Assessment Results for BHHIA1 path IKBIX\_PYREX

Graphic Depiction 3



## DME DME Assessment Results for BHHIA1 path MAXIM\_LULLS

### Results Summary

|                            |  |
|----------------------------|--|
| Flyability:                | Completed  |
| DME/DME:                   | Completed - No Critical DMEs   |
| Name:                      | Miles CTR Carpenter  |
| Project File:              | C:\Users\Miles CTR Carpenter\Desktop\KFL STARs DME\KFL BHHIA STAR DME\KFL BHHIA1 STAR DME_03.17.2021.tgs   |
| Output File:               | C:\Users\Miles CTR Carpenter\Desktop\KFL STARs DME\KFL BHHIA STAR DME\KFL [IFPA] BHHIA1 20210317_0728 EDT\MAXIM_LULLS\KFL BHHIA1 RNAV STAR MAXIM LULLS 20210317_0728 EDT.pdf |
| Procedure Name:            | BHHIA1   |
| Software:<br>DmeDmePlugin: | 6.2.0  |
| Date/Time:                 | 03/17/2021 07:28 EDT   |
| Databases:                 | DTED 0max  |

### Failures

No Failures

### Warnings

GNSS\_ONLY      MAXIM\_\_\_\_\_LULLS is GNSS Only and was not evaluated

### Notes For Flight Check

None

### Flight Plan

| Name  | Type | Lat/Lon                                | Altitude (ft) | VNAV Mode | Ground Speed (kts) | Turn Type | Leg Type |
|-------|------|--|---------------|-----------|--------------------|-----------|----------|
| MAXIM | WP   | N24° 00' 00.000",<br>W082° 31' 07.730" | 18000         | VNAV      | 280                | FLY_BY    | TF       |
| LULLS | WP   | N24° 28' 51.840",<br>W081° 57' 38.550" | 18000         | VNAV      | 280                | FLY_BY    | TF       |

### Flyability

|                        |                                 |
|------------------------|---------------------------------|
| Flight Type:           | RNAV_STAR                       |
| Selected Airport:      | KFL [IFPA]                      |
| Climb Gradient:        | None assigned                   |
| Speeds:                | 200 Ground Speed to 11000 FT    |
|                        | 240 Ground Speed to 18000 FT    |
|                        | 260 Ground Speed to 24000 FT    |
|                        | 340 Ground Speed above 24000 FT |
| Descent During a Turn: | Allowed                         |
| VNAV Mode:             | Flight Plan                     |

## DME DME Assessment Results for BHHIA1 path MAXIM\_LULLS

| DME/DME                           |                      |
|-----------------------------------|----------------------|
| RNP:                              | RNP 2                |
| Flight Mode:                      | Manual               |
| Line of Sight (DTED Level 0 Max): | Evaluated            |
| Inertial Drift:                   | Enabled              |
| Initial Drift:                    | 0.558 NM             |
| INS Drift Rate:                   | 8.0 NM/Hour          |
| Range Mode:                       | OSV                  |
| RNP Edges:                        | Evaluated            |
| Min DME Range:                    | 3.0 NM               |
| DME Types:                        | DME, VOR-DME, VORTAC |
| DME Include Angles:               | 30 to 150            |
| Critical DMEs:                    | Allowed              |
| DoD Facilities:                   | Not included         |
| Foreign Facilities:               | Included             |
| High DMEs:                        | Included             |
| Low DMEs:                         | Included             |
| Terminal DMEs:                    | Included             |
| Flight Check DMEs:                | Not selected         |
| Higher Altitudes:                 | Not Evaluated        |
| Near Maximum Altitude:            | Not Evaluated        |
| Automatic ESVs:                   | Not enabled          |
| Disabled DMEs:                    | ZFP,ZQA,ZTC          |

| DME/DME (Continued) |      |  |        |       |      |        |          |          |      |          |
|---------------------|------|--|--------|-------|------|--------|----------|----------|------|----------|
| DMEs Used           |      |  |        |       |      |        |          |          |      |          |
| #                   | Name | Lat/Lon                                | MAGVAR | Range | Type | Source | Critical | Status   | Time | Distance |
| 1                   | ZFP  | N26° 33' 19.250",<br>W078° 41' 52.250" | 3.0 W  | 130   | H    | IFPA   | NO       | Disabled |      |          |
| 2                   | ZQA  | N25° 01' 31.860",<br>W077° 26' 47.140" | 6.0 W  | 130   | H    | IFPA   | NO       | Disabled |      |          |
| 3                   | ZTC  | N26° 44' 05.000",<br>W077° 22' 45.000" | 5.0 W  | 130   | H    | IFPA   | NO       | Disabled |      |          |

| Inertial Drift Segments |                |              |             |
|-------------------------|----------------|--------------|-------------|
| #                       | Start Location | End Location | Length [NM] |

| Available DMEs by Waypoints |                |          |
|-----------------------------|----------------|----------|
| Waypoint Before             | Waypoint After | DME List |
| MAXIM                       | LULLS          |          |

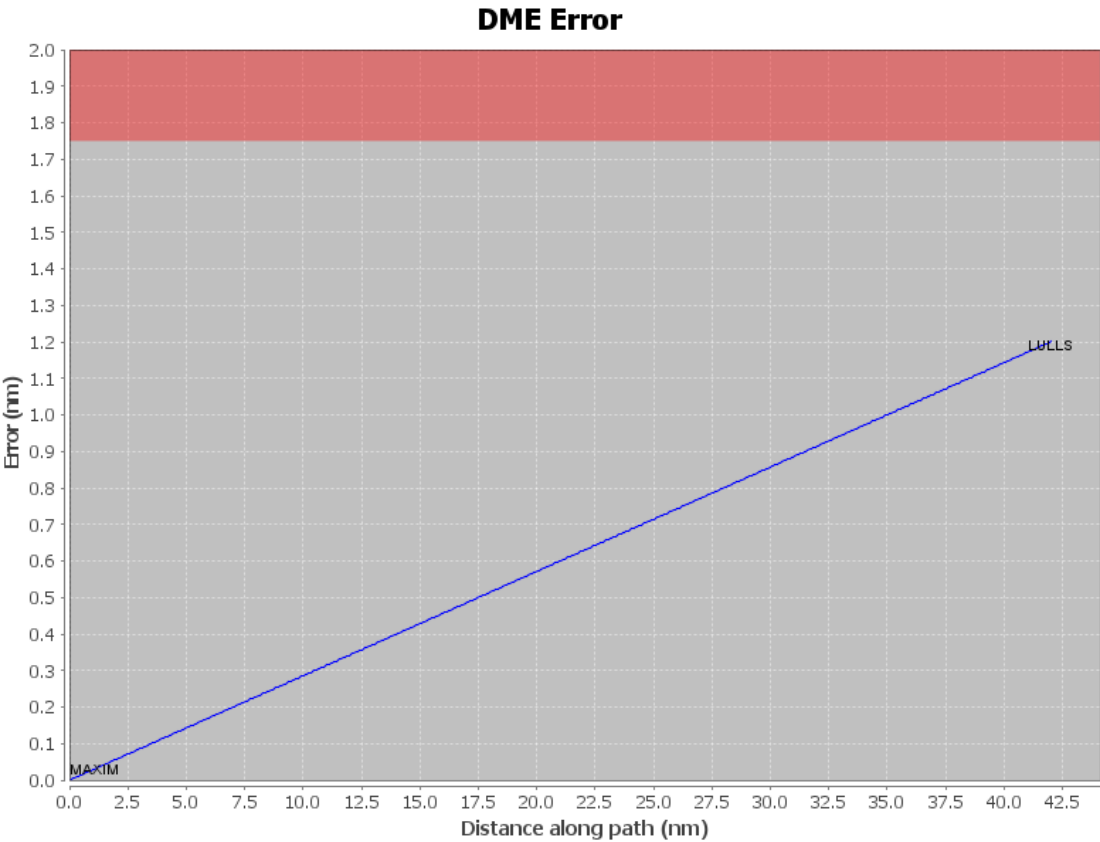
# DME DME Assessment Results for BHHIA1 path MAXIM\_LULLS

## User Data Files

| # | File Name  |
|---|--|
| 1 | UserDMEsKFLL [IFPA] BAHIA1 RNAV STAR_20210106_1600 EST.udt |

## User DMEs

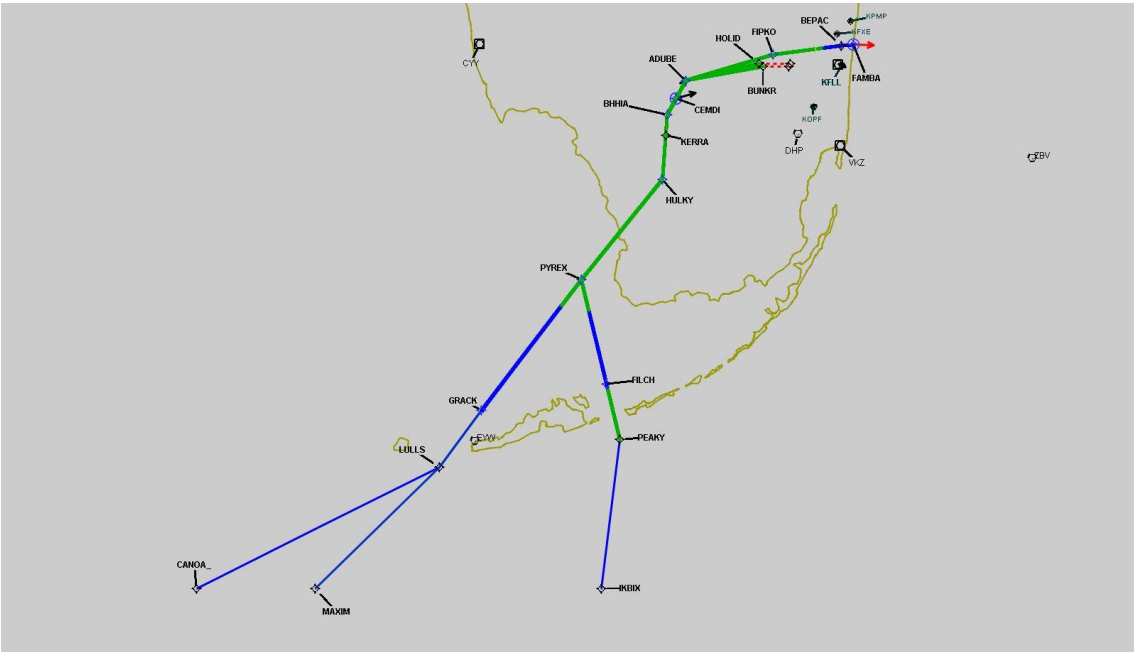
| #    | Name                             | Lat/Lon   | MAGVAR | Range | Elevation [ft] | Frequency  | Replaces           | Status |
|------|----------------------------------|---|--------|-------|----------------|--|--------------------|--------|
| 1    | PBI FAA 882483-44<br>PBI [IFPA]  | N26° 40' 48.198",<br>W080° 05' 11.359"                              | 3.0 W  | 130   | 15.7           | 115.7  | PBI FAA 882483-44  |        |
| ESV: |                                  | Bearing [True]: 193.0° to 248.0°<br>Bearing [Mag]: 196.0° to 251.0° |        |       |                | Arc Distance: Out to 73.0 NM<br>Altitude: 3000.0 to 16000.0 ft |                    |        |
| 2    | DHP FAA 955265-050<br>DHP [IFPA] | N25° 47' 59.866",<br>W080° 20' 56.526"                              | 4.0 W  | 130   | 5.9            | 113.9  | DHP FAA 955265-050 |        |
| ESV: |                                  | Bearing [True]: 216.0° to 266.0°<br>Bearing [Mag]: 220.0° to 270.0° |        |       |                | Arc Distance: Out to 98.0 NM<br>Altitude: 6900.0 to 18000.0 ft |                    |        |
| 3    | PHK FAA 900991-11<br>PHK [IFPA]  | N26° 46' 57.873",<br>W080° 41' 29.157"                              | 0.0 E  | 130   | 15.5           | 115.4  | PHK FAA 900991-11  |        |
| ESV: |                                  | Bearing [True]: 185.0° to 225.0°<br>Bearing [Mag]: 185.0° to 225.0° |        |       |                | Arc Distance: Out to 65.0 NM<br>Altitude: 5000.0 to 11000.0 ft |                    |        |
| 4    | RSW FAA 191354-013<br>RSW [IFPA] | N26° 31' 47.551",<br>W081° 46' 32.764"                              | 2.0 W  | 40    | 25             | 111.8  | RSW FAA 191354-013 |        |
| ESV: |                                  | Bearing [True]: 118.0° to 178.0°<br>Bearing [Mag]: 120.0° to 180.0° |        |       |                | Arc Distance: Out to 90.0 NM<br>Altitude: 6000.0 to 15000.0 ft |                    |        |
| 5    | PHK FAA 900991-49<br>PHK [IFPA]  | N26° 46' 57.873",<br>W080° 41' 29.157"                              | 0.0 E  | 130   | 15.5           | 115.4  | PHK FAA 900991-49  |        |
| ESV: |                                  | Bearing [True]: 178.0° to 202.0°<br>Bearing [Mag]: 178.0° to 202.0° |        |       |                | Arc Distance: Out to 95.0 NM<br>Altitude: 6000.0 to 16000.0 ft |                    |        |
| 6    | EYW FAA 701364-019<br>EYW [IFPA] | N24° 35' 09.162",<br>W081° 48' 01.715"                              | 1.0 E  | 130   | 10             | 113.5  | EYW FAA 701364-019 |        |
| ESV: |                                  | Bearing [True]: 11.0° to 46.0°<br>Bearing [Mag]: 10.0° to 45.0°     |        |       |                | Arc Distance: Out to 90.0 NM<br>Altitude: 6900.0 to 15000.0 ft |                    |        |
| 7    | VKZ FAA 671324-57<br>VKZ [IFPA]  | N25° 45' 06.846",<br>W080° 09' 15.996"                              | 4.0 W  | 130   | 10.5           | 117.1  | VKZ FAA 671324-57  |        |
| ESV: |                                  | Bearing [True]: 240.0° to 260.0°<br>Bearing [Mag]: 244.0° to 264.0° |        |       |                | Arc Distance: Out to 70.0 NM<br>Altitude: 4500.0 to 18000.0 ft |                    |        |





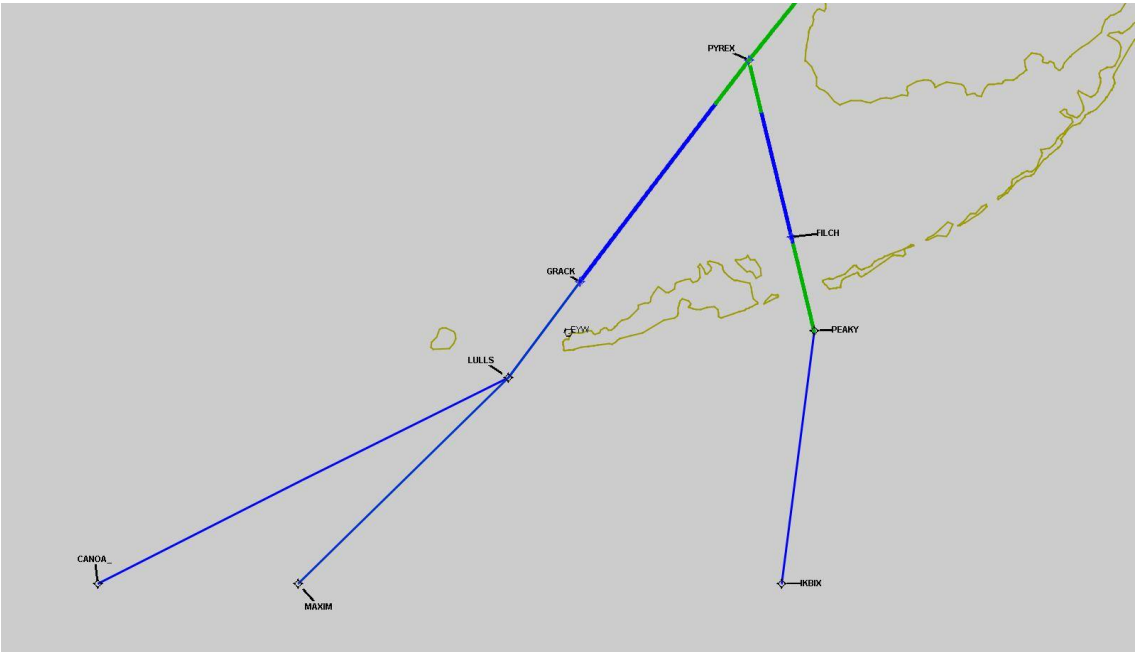
DME DME Assessment Results for BHHIA1 path MAXIM\_LULLS

Graphic Depiction 1



DME DME Assessment Results for BHHIA1 path MAXIM\_LULLS

Graphic Depiction 2



DME DME Assessment Results for BHHIA1 path MAXIM\_LULLS

Graphic Depiction 3

