

Flight Procedures Cover Page	Task Action: FLIGHT CHECK	Task Type: IAP	Estimated Chart Date: 08/10/2023	APWS Task ID: 5B649503BF054BE0B7D20CC677D817C4	APWS Project ID: C24B7B9FCB8041FE876ED94ED7161844
Procedure: HI - ILS Y OR LOC Y RWY 13 AMDT 4D		Enroute: NO	Specialist: Johnson, Raymond		Agreement Number:
Airport ID: KACY			Airport City: ATLANTIC CITY		State: NJ
Facility ID: PVO	Facility Type: ILS	Flight Inspection Remark Type: New FC Slot			
<div>Procedure Comments: .PROCEDURE COMPLETED USING CURRENT DATA. CANCELS T-NOTAM FDC 0/6396. CONTACT JASON KRETSCHMER (405) 954-4019. <div>Digitally signed by JASON KRETSCHMER Mar 30, 2023</div></div>					



FIPC BASIC FORM								
PROCEDURE: HI - ILS Y OR LOC Y RWY 13 AMDT 4D			AIRPORT NAME: ATLANTIC CITY INTL		AIRPORT ID: KACY	SPECIAL CONTROL NO: YP-04-086-23		
FAC ID: PVO		CITY: ATLANTIC CITY			ST: NJ	ORIG CHART DATE: 08/10/2023		
DFL TYPE: PROC/A	THIRD PARTY: <input type="checkbox"/> YES	EST. TIME ON SITE: 0.4	REIMB. NUMBER:	PTS TASK ID: 5B649503BF054BE0B7D20CC677D817C4				
PREFLIGHT NOTES								
REVIEWER:					DATE:			
COMMENTS:					CHECK ONE: <input type="checkbox"/> FLT CK REQ <input type="checkbox"/> NFCR <input type="checkbox"/> REJECT			
							YES	NO
					CPV COMPLETE?		X	
PROCEDURE RESULTS								
INSPECTION DATE: 06/02/2023	CREW #: VN137	N #: N75	INSTRUMENT PROCEDURE STATUS: <input checked="" type="checkbox"/> SAT <input type="checkbox"/> SAT W/CHANGES <input type="checkbox"/> UNSAT		ARINC CODING: <input type="checkbox"/> SAT <input type="checkbox"/> SAT/GOLD <input type="checkbox"/> UNSAT			
FLIGHT INSPECTOR SIGNATURE: bob s pressler @ 06/02/2023 14:48			PRINTED NAME: PRESSLER, ROBERT STEPHEN			NOTAM INITIATED? <input type="checkbox"/> YES <input checked="" type="checkbox"/> NO		
FLIGHT INSPECTOR REMARKS:								
IN-FLIGHT OBSTACLE REPORT								
OBSTRUCTION ID #:	COORDINATES OR LOCATION:	GNSS ALTITUDE (MSL):	BAROMETRIC ALTITUDE (MSL):		HEIGHT ABOVE GROUND LEVEL:			

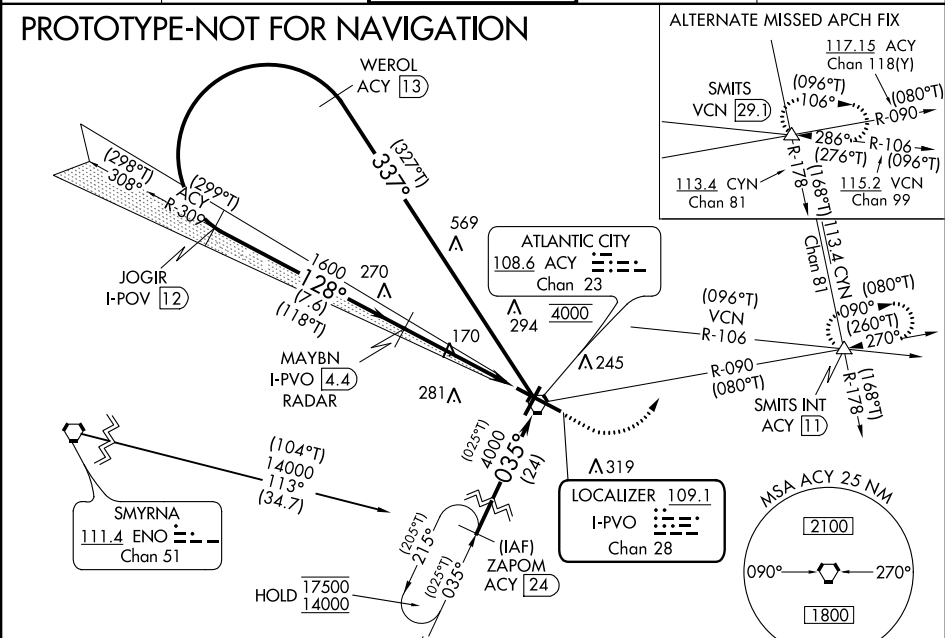
LOC/DME I-PVO	APP CRS	Rwy ldg	10000
109.1	128°	TDZE	75
Chan 28		Apt Elev	75

HI-ILS Y or LOC Y RWY 13

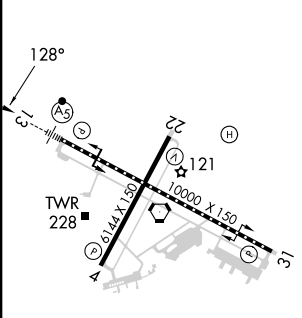
ATLANTIC CITY INTL (ACY)

DME or RADAR required.	MALSR	MISSED APPROACH: Climb to 600 then climbing left turn to 2000 on ACY VORTAC R-090 to SMITS INT/ACY 11 DME and hold.
▼ *For inoperative ALS, increase visibility Cat C/D/E to RVR 4000.	AS	
ASR **For inop ALS, increase visibility Cat C/D/E to 1½ SM.		

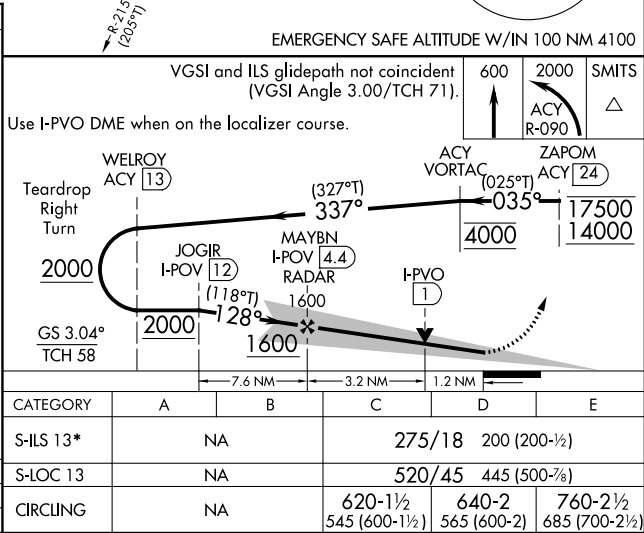
ATIS	ATLANTIC CITY APP CON	ATLANTIC CITY TOWER	GND CON	CLNC DEL
125.725 316.15	124.6 327.125	120.3 239.0	121.9 284.6	127.85 353.775



ELEV 75	D	TDZE 75
---------	---	---------



TDZ/CL Rwy 13	
HIRL Rwy 4-22 and 13-31	
REIL Rwy 31	
FAF to MAP 4.6 NM	
Knots	60 90 120 150 180
Min:Sec	4:36 3:04 2:18 1:50 1:32



LOC/DME I-PVO 109.1 Chan 28	APCH CRS 128°	Rwy Idg TDZE Arprt Elev 75 75
---	-------------------------	---

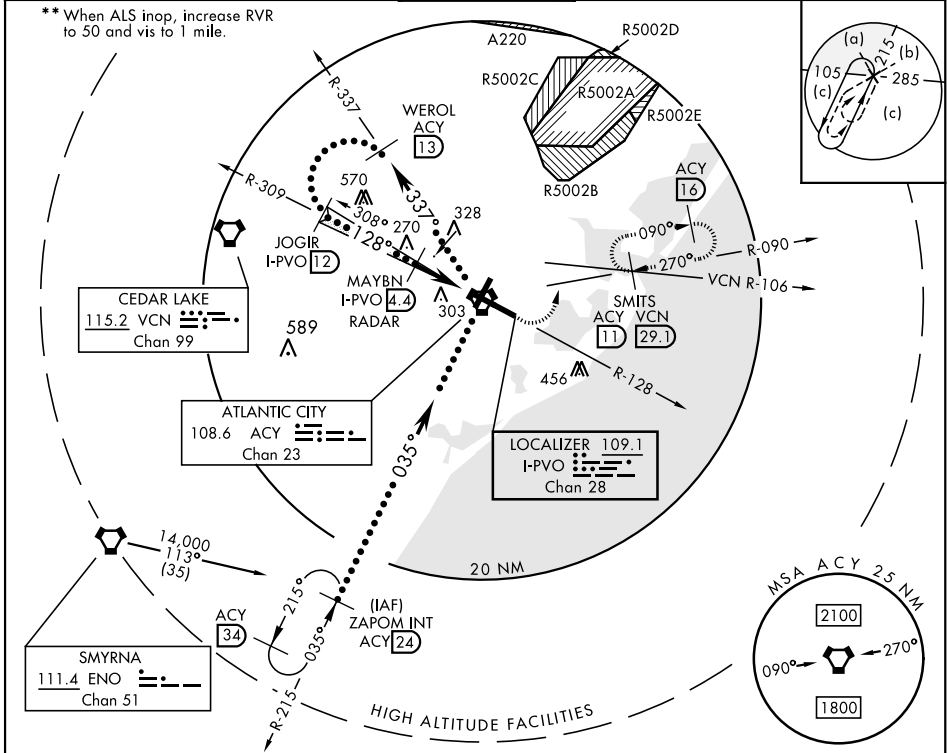
CURRENT

HI-ILS or LOC RWY 13

ATLANTIC CITY INTL (KACY)

DME or RADAR required. * When ALS inop, increase RVR to 40 and vis to ¼ mile.	MALSR 	MISSED APPROACH: Climb to 600 then climbing left turn to 2000 via ACY R-090 to SMITS INT/ACY 11 DME and hold; or when directed by ATC, climb to 600 then climbing left turn to 2000 via heading 076° and VCN R-106 to SMITS INT/VCN 29.1 DME and hold E, RT, hdg 286° inbound.
--	-----------	--

ATIS 125.725 316.15	APP CON 124.6 327.125 130°-309° 134.25 292.2 310°-129°	TOWER 120.3 239.0	GND CON 121.9 284.6	CLNC DEL 127.85 353.775	ASR
-------------------------------	--	-----------------------------	-------------------------------	-----------------------------------	-----



EMERG SAFE ALT 100 NM 4200			ELEV 75 D TDZE 75	
Use I-PVO DME when on the LOC course				
WORLD ACY 13			REIL Rwy 31 HIRL Rwy 4-22 and 13-31 TDZL/CL Rwy 13	
VORTAC			FAF to MAP 4.6 NM	
MAYBN I-PVO 4.4 RADAR			Knots 120 140 160 180 200	
JOGIR I-PVO 12			Min:Sec 2:18 1:58 1:43 1:32 1:23	
I-PVO DME				
GS 3.00° TCH 58				
VGS and ILS glidepath not coincident				
CATEGORY	C	D	E	
S-ILS 13 *	275/18 200	(200-½)	275/24 200 (200-½)	
S-LOC 13 **	420/24 345 (400-½)	420/40 345	(400-¾)	
CIRCLING	540-1½ 465 (500-1½)	640-2 565 (600-2)	760-2½ 685 (700-2½)	

HI-ILS or LOC RWY 13

NE-2, 16 JUN 2022 to 14 JUL 2022

