



Flight Procedures Cover Page	Task Action: P-NOTAM	Task Type: IAP	Estimated Chart Date: 11/04/2021	APWS Task ID: 5B02E87A75704C2C8971CB6B043F0543	APWS Project ID: 9594FF987D024C048B48ECC3F85F4676
Procedure: RNAV (GPS) RWY 29 AMDT 0B		Enroute: NO	Specialist: Moore, Frank		Agreement Number:
Airport ID: KODO			Airport City: ODESSA		State: TX
Facility ID:	Facility Type:	Flight Inspection Remark Type:			
<div> <div> Procedure Comments: P-NOTAM This Cancels FDC 0/7810 Order 8260.3, chapter 2, New Circling Criteria Applied. CONTACT DAVE TEFFETELLER 202-267-5177 </div> <div>   </div> </div>					

OLD

ODESSA, TEXAS

20086

WAAS CH 86318 W29A	APP CRS 293°	Rwy Idg TDZE Apt Elev	6200 2980 3004
--	------------------------	-----------------------------	---

AL-5689 (FAA)

RNAV (GPS) RWY 29 ODESSA-SCHLEMEYER FIELD (ODO)

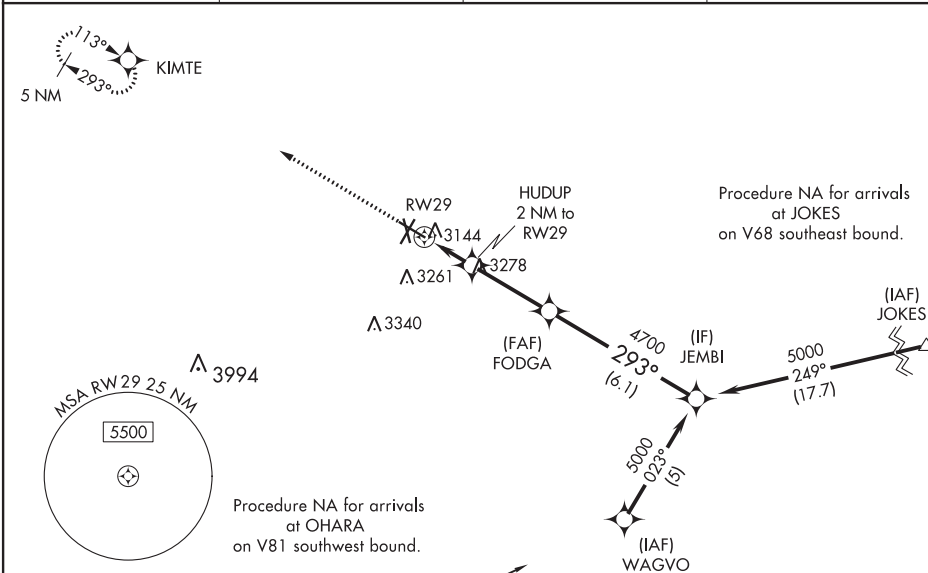
RNP APCH.

Baro-VNAV NA when using Midland Intl Air and Space Port altimeter setting. For uncompensated Baro-VNAV systems, LNAV/VNAV NA below -21°C or above 43°C. Circling NA south of Rwy 2 and 34. When local altimeter setting not received use Midland Intl Air and Space Port altimeter setting and increase all DAs 41 feet and all MDAs 60 feet and increase LNAV Cats C and D visibility 1/8 mile. VDP NA with Midland Intl Air and Space Port altimeter setting.

MISSED APPROACH:
Climb to 5000 direct
KIMTE and hold.

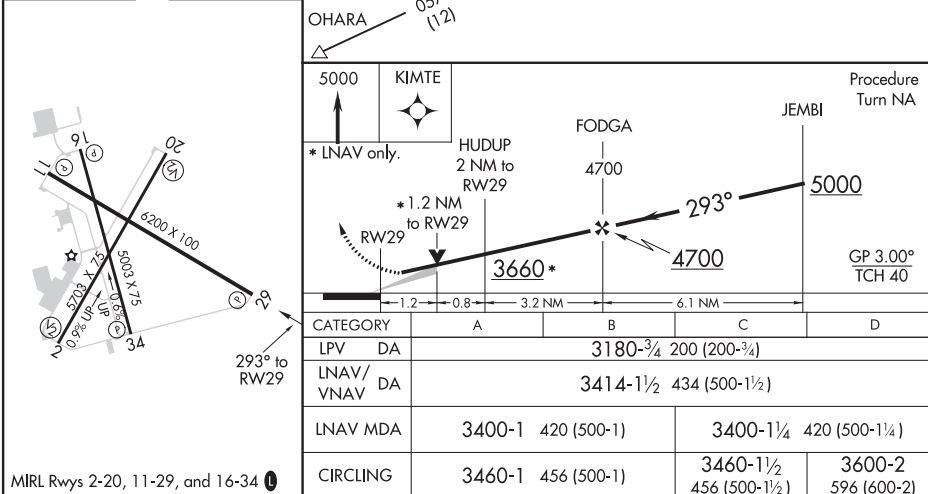
ASOS 119.275	MIDLAND APP CON ★ 124.6 256.875	CLNC DEL 121.7	UNICOM 123.0 (CTAF) 1
------------------------	---	--------------------------	---------------------------------

SC-3, 20 MAY 2021 to 17 JUN 2021



SC-3, 20 MAY 2021 to 17 JUN 2021

ELEV 3004	TDZE 2980
-----------	-----------



ODESSA, TEXAS
Orig-A 26MAR20

31° 55'N-102° 23'W

ODESSA-SCHLEMEYER FIELD (ODO)
RNAV (GPS) RWY 29

