

FEDERAL AVIATION ADMINISTRATION
FLIGHT STANDARDS SERVICE
STANDARD TERMINAL ARRIVAL (STAR)

Bearings, headings, courses, tracks and radials are magnetic. Elevations and altitudes are in feet, MSL. Altitudes are minimum altitudes unless otherwise indicated.
Distances are in nautical miles (NM). Graphic depictions attached.

Arrival Name	Number	STAR Computer Code	Superseded Number	Dated	Effective Date
JAFAR (RNAV)	TWO	JAFAR.JAFAR2	ONE	04/22/2021	

TRANSITION ROUTES:

Transition Name	Transition Computer Codes	From FIX/NAVAID	To FIX/NAVAID	Course	Distance	MEA	MOCA	MAA	Crossing Altitudes / Fixes
BITTE	BITTE.JAFAR2	BITTE	BITTE						
			BRKWL	123.86	56.77	16000	2100		BETWEEN 17000 AND FL240
			JAFAR	163.37	19.75	12000	1800		BETWEEN 13000 AND FL190
BRKWL	BRKWL.JAFAR2	BRKWL	BRKWL						BETWEEN 17000 AND FL240
			JAFAR	163.37	19.75	12000	1800		BETWEEN 13000 AND FL190
COEDY	COEDY.JAFAR2	COEDY	COEDY						
			BUULL	158.51	50.74	FL180	1900		
			HUNKR	158.74	50.95	FL180	1800		AT/BELOW FL260
			DOWNO	172.44	21.00	FL180	1800		AT/ABOVE FL240
			BRKWL	173.81	29.72	16000	1800		BETWEEN 17000 AND FL240
			JAFAR	163.37	19.75	12000	1800		BETWEEN 13000 AND FL190
ILEXX	ILEXX.JAFAR2	ILEXX	ILEXX						
			HUNKR	127.16	42.40	FL180	1800		AT/BELOW FL260
			DOWNO	172.44	21.00	FL180	1800		AT/ABOVE FL240
			BRKWL	173.81	29.72	16000	1800		BETWEEN 17000 AND FL240
			JAFAR	163.37	19.75	12000	1800		BETWEEN 13000 AND FL190

ARRIVAL ROUTE DESCRIPTION:

KMCO: FROM JAFAR ON TRACK 140.30/9.13 TO CROSS CRPIT BETWEEN 12000 AND 15000, THEN ON TRACK 129.36/9.97 TO LAMMP.

LANDING KMCO RWY 17L/R, 18L/R: FROM LAMMP ON TRACK 106.04/17.48 TO CROSS YAGGO AT 6000 AND AT 210 KIAS, THEN ON TRACK 106.04. EXPECT RADAR VECTORS TO FINAL APPROACH COURSE.

LANDING KMCO RWY 35L/R, 36L/R: FROM LAMMP ON TRACK 129.69/8.04 TO CROSS WISHH BETWEEN 10000 AND 12000 AND AT 250 KIAS, THEN ON TRACK 126.31/12.87 TO HARAM, THEN ON TRACK 180.63/2.06 TO CROSS DORII AT OR ABOVE 8000 AND AT 220 KIAS, THEN ON TRACK 186.00/13.35 TO CROSS BRICE AT 5000 AND AT 210 KIAS, THEN ON TRACK 186.00. EXPECT RADAR VECTORS TO FINAL APPROACH COURSE.

LANDING KISM/KORL: FROM JAFAR ON TRACK 140.05/9.24 TO RINGG, THEN ON TRACK 144.38/5.96 TO CROSS FLIPY AT 11000 AND AT 250 KIAS, THEN ON TRACK 144.38. EXPECT RADAR VECTORS TO FINAL APPROACH COURSE.

PBN REQUIREMENT NOTES

RNAV 1 - DME/DME/IRU OR GPS

EQUIPMENT REQUIREMENT NOTES

RADAR REQUIRED



FEDERAL AVIATION ADMINISTRATION
FLIGHT STANDARDS SERVICE
STANDARD TERMINAL ARRIVAL (STAR)

Bearings, headings, courses, tracks and radials are magnetic. Elevations and altitudes are in feet, MSL. Altitudes are minimum altitudes unless otherwise indicated.
Distances are in nautical miles (NM). Graphic depictions attached.

Arrival Name	Number	STAR Computer Code	Superseded Number	Dated	Effective Date
JAFAR (RNAV)	TWO	JAFAR.JAFAR2	ONE	04/22/2021	

PROCEDURAL DATA NOTES:

NOTE: Expect "descend via" clearance and landing direction (north or south) by ARTCC. For vertical navigation planning, landing south, select Rwy 18R, landing north, select Rwy 36L.
NOTE: MCO approach will issue landing runway.
NOTE: BITTE and BRKWL Transitions, ATC Assigned only.
NOTE: MCO Landing North, Expect RADAR Vectors prior to BRICE.
NOTE: MCO Landing South, Expect RADAR Vectors prior to YAGGO.
NOTE: Landing ISM and ORL, Expect RADAR Vectors at FLIPY.
NOTE: JET AIRCRAFT ONLY.

FIXES AND/OR HOLDING PATTERNS:

CHART HOLDING AT BRKWL: HOLD N, LT, 173.81 INBOUND, 10 NM LEGS.
CHART HOLDING AT BUULL: HOLD N, RT, 158.51 INBOUND, 10 NM LEGS.
CHART HOLDING AT HUNKR: HOLD N, RT, 158.74 INBOUND, 10 NM LEGS.
CHART HOLDING AT ILEXX: HOLD NW, RT, 127.16 INBOUND, 10 NM LEGS.
CHART HOLDING AT JAFAR: HOLD N, LT, 163.17 INBOUND, 10 NM LEGS.
CHART HOLDING AT BITTE: HOLD NW, RT, 123.86 INBOUND, 10 NM LEGS.
CHART HAMMY, AMEBE.

COMMUNICATIONS:

CHART: ORLANDO APP CON

AIRPORTS SERVED:

ORLANDO INTL, ORLANDO, FL (KMCO)
EXECUTIVE, ORLANDO, FL (KORL)
KISSIMMEE GATEWAY, ORLANDO, FL (KISM)

LOST COMMUNICATIONS PROCEDURE:

KMCO LANDING NORTH: Continue track to BRICE, then proceed direct AMEBE, intercept Rwy 36L final approach course, conduct approach.
KMCO LANDING SOUTH: Continue track to YAGGO, then proceed direct to HAMMY, intercept Rwy 18R final approach course, conduct approach.

REMARKS:

ENVIRONMENTAL REVIEW UNDER ORDER 1050.1 (LATEST EDITION) AND THE NOISE SCREENING HAVE BEEN ACCOMPLISHED.
MEAs AT or ABOVE FL180 for COMM and DME/DME/IRU SOLUTIONS.



FEDERAL AVIATION ADMINISTRATION
FLIGHT STANDARDS SERVICE
STANDARD TERMINAL ARRIVAL (STAR)

Bearings, headings, courses, tracks and radials are magnetic. Elevations and altitudes are in feet, MSL. Altitudes are minimum altitudes unless otherwise indicated.
Distances are in nautical miles (NM). Graphic depictions attached.

Arrival Name JAFAR (RNAV)	Number TWO	STAR Computer Code JAFAR.JAFAR2	Superseded Number ONE	Dated 04/22/2021	Effective Date
-------------------------------------	----------------------	---	---------------------------------	----------------------------	----------------

ADDITIONAL FLIGHT DATA:
DME/DME ASSESSMENT: SAT (RNP 2.0)
REFERENCE MAGNETIC VARIATION = KMCO 06W/2015
CHART AT FLIPY TERMINUS: LDG KISM/KORL
CHART AT YAGGO TERMINUS: KMCO RWY 17L/R, 18L/R
CHART AT BRICE TERMINUS: KMCO RWY 35L/R, 36L/R

FLIGHT INSPECTED BY:				<i>Digitally signed by</i> ALLAN WILL
ROBERT E WILLIAMS Name	FPO Organization	09/21/2021 Date		Sep 28, 2021 Signature

DEVELOPED BY:

VICKI TURNE Name	Design and Implementation Program Manager, AJV-E22 Organization	05/10/2021 Date		<i>Digitally signed by</i> ALLAN WILL Sep 28, 2021 Signature
---------------------	---	--------------------	--	--

APPROVED BY:

MARLON ROBINSON Name	AJV-A420 Organization			<i>Digitally signed by</i> ALLAN WILL Sep 28, 2021 Signature
-------------------------	--------------------------	--	--	--

CHANGES:

1. CHANGED SPEED AT FLIPY FROM 280 KIAS TO 250 KIAS.
2. MOVED FLIPY 0.31 NM SOUTHEAST AND COURSE AND FM LEG CHANGED FROM 141.40 TO 144.38 MAG.
3. CHANGED ALL TRANSITION MOCA VALUES THAT WERE PREVIOUSLY 1600/1700 TO 1800.

REASONS:

1. SLOWER SPEED WILL PROVIDE CONSISTENT FLOW OF TRAFFIC TO ALL AIRPORTS.
2. MOVED TO CLEAR AIRSPACE WHICH ELIMINATES NEED FOR POINT OUTS.
3. IAW AFS MEMO 07/01/2021; MIN MOCA VALUE REQUIRED AT COMMON FIX JAFAR IS 1800.

09/28/2021: THIS IS A CORRECTED COPY OF THE FORM APPROVED ON 07/12/2021.

1. REMOVED NOTE: Descend via MACH number until intercepting 280 KIAS. Maintain 280 KIAS until slowed by the STAR or assigned by ATC.

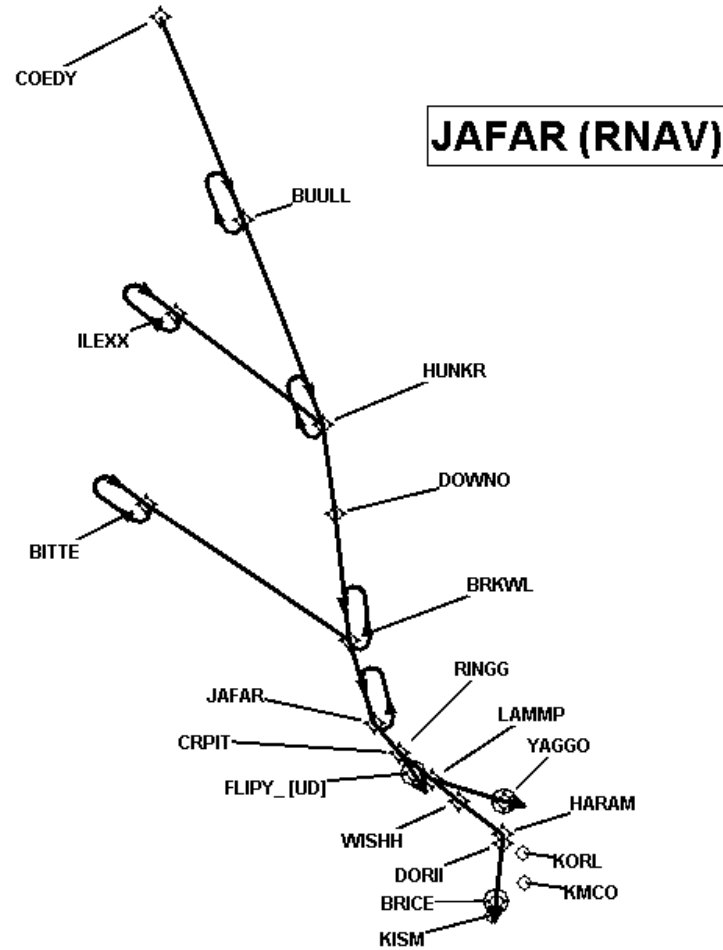
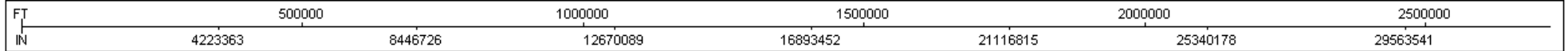


FEDERAL AVIATION ADMINISTRATION
FLIGHT STANDARDS SERVICE
STANDARD TERMINAL ARRIVAL (STAR)

Bearings, headings, courses, tracks and radials are magnetic. Elevations and altitudes are in feet, MSL. Altitudes are minimum altitudes unless otherwise indicated.
Distances are in nautical miles (NM). Graphic depictions attached.

Arrival Name	Number	STAR Computer Code	Superseded Number	Dated	Effective Date
JAFAR (RNAV)	TWO	JAFAR.JAFAR2	ONE	04/22/2021	

Graphic Depiction 1

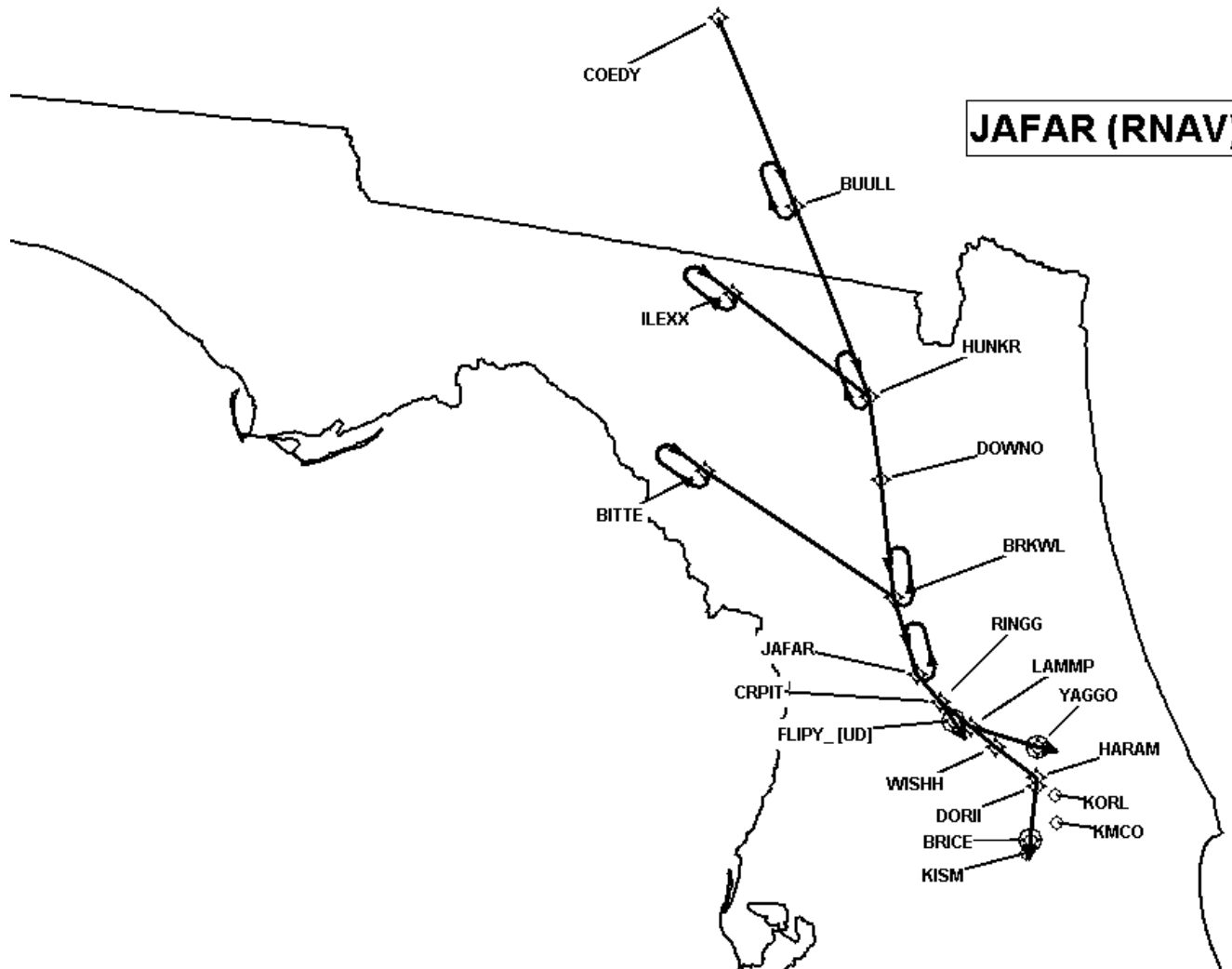
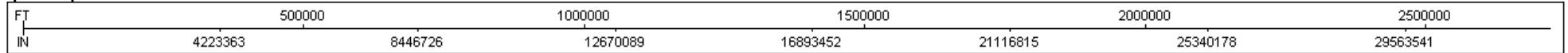


FEDERAL AVIATION ADMINISTRATION
FLIGHT STANDARDS SERVICE
STANDARD TERMINAL ARRIVAL (STAR)

Bearings, headings, courses, tracks and radials are magnetic. Elevations and altitudes are in feet, MSL. Altitudes are minimum altitudes unless otherwise indicated.
Distances are in nautical miles (NM). Graphic depictions attached.

Arrival Name	Number	STAR Computer Code	Superseded Number	Dated	Effective Date
JAFAR (RNAV)	TWO	JAFAR.JAFAR2	ONE	04/22/2021	

Graphic Depiction 2



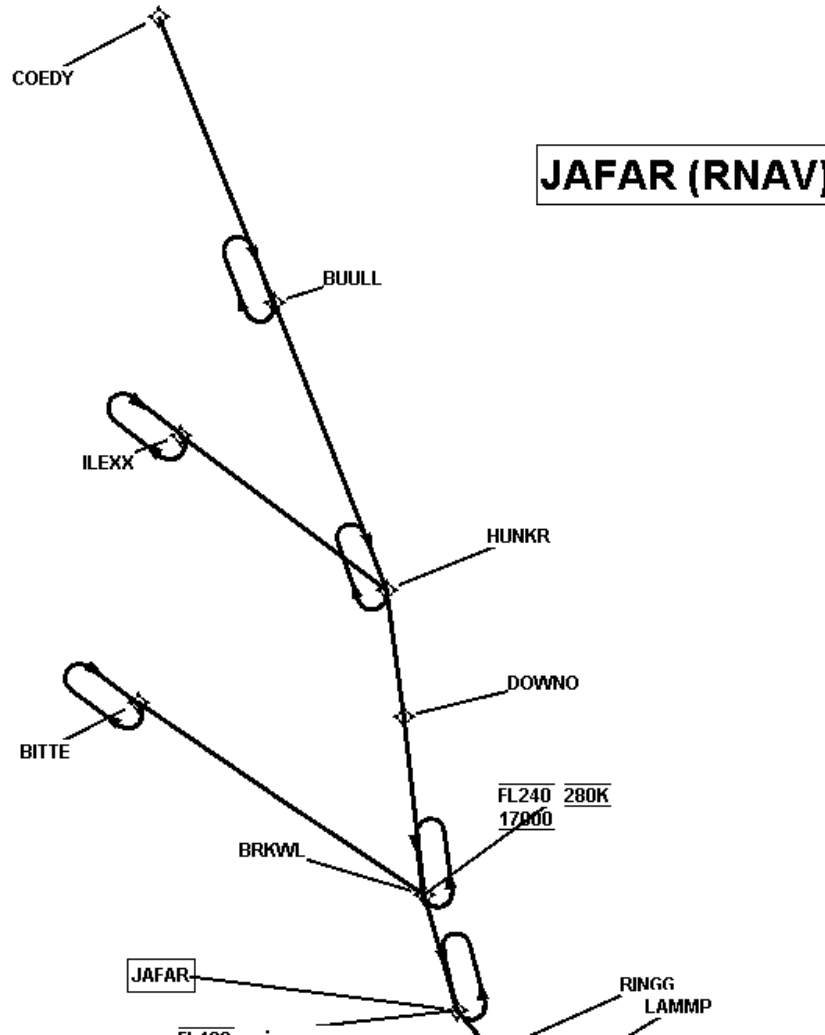
FEDERAL AVIATION ADMINISTRATION
FLIGHT STANDARDS SERVICE
STANDARD TERMINAL ARRIVAL (STAR)

Bearings, headings, courses, tracks and radials are magnetic. Elevations and altitudes are in feet, MSL. Altitudes are minimum altitudes unless otherwise indicated.
Distances are in nautical miles (NM). Graphic depictions attached.

Arrival Name	Number	STAR Computer Code	Superseded Number	Dated	Effective Date
JAFAR (RNAV)	TWO	JAFAR.JAFAR2	ONE	04/22/2021	

Graphic Depiction 3

FT		500000		1000000		1500000	
IN	3002941	6005882	9008823	12011764	15014705	18017646	21020587

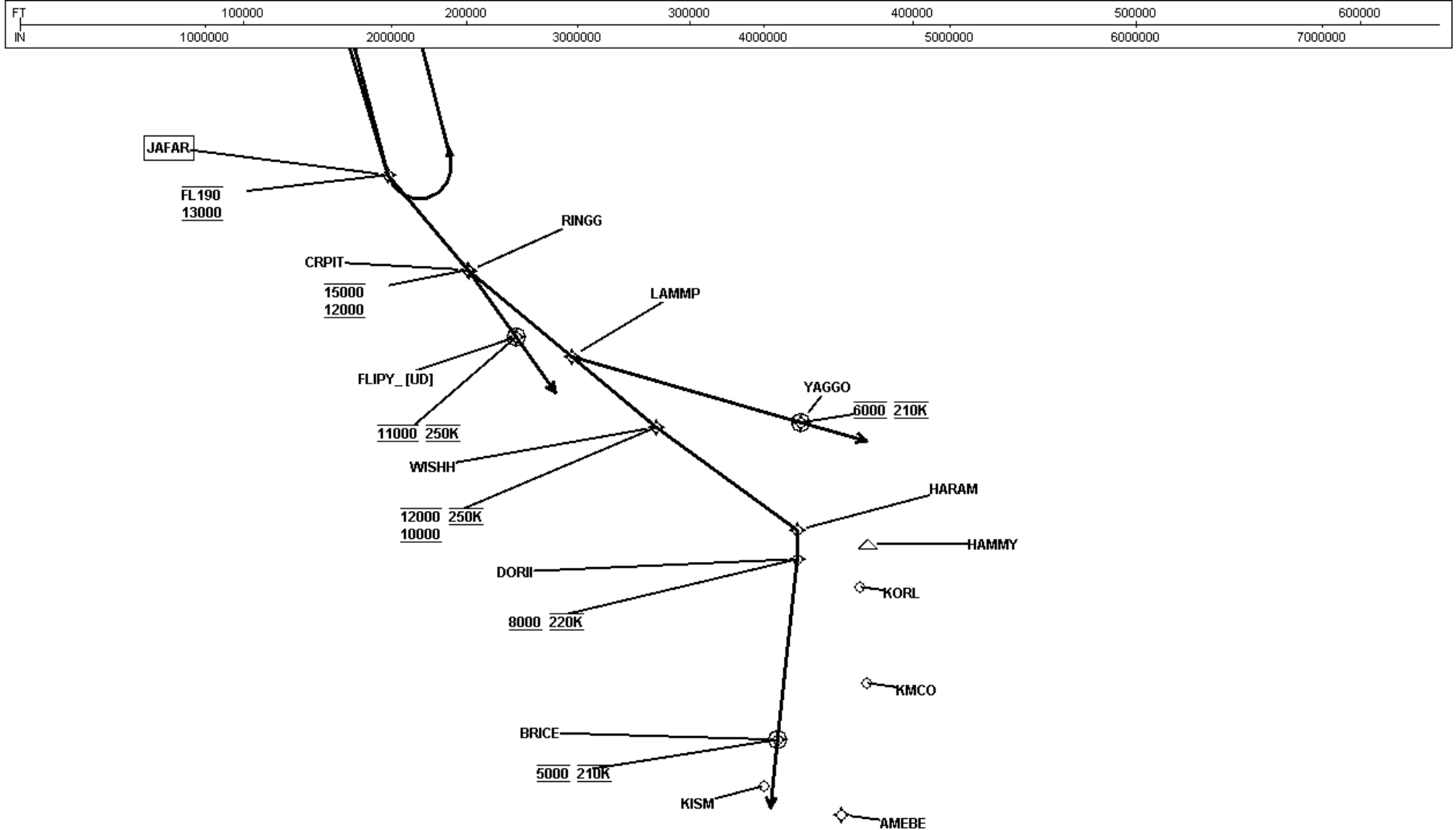


FEDERAL AVIATION ADMINISTRATION
FLIGHT STANDARDS SERVICE
STANDARD TERMINAL ARRIVAL (STAR)

Bearings, headings, courses, tracks and radials are magnetic. Elevations and altitudes are in feet, MSL. Altitudes are minimum altitudes unless otherwise indicated.
Distances are in nautical miles (NM). Graphic depictions attached.

Arrival Name	Number	STAR Computer Code	Superseded Number	Dated	Effective Date
JAFAR (RNAV)	TWO	JAFAR.JAFAR2	ONE	04/22/2021	

Graphic Depiction 4



FEDERAL AVIATION ADMINISTRATION
FLIGHT STANDARDS SERVICE
STAR (DATA RECORD)

Arrival Name	Number	STAR Computer Code	Superseded Number	Dated	Effective Date
JAFAR (RNAV)	TWO	JAFAR.JAFAR2	ONE	04/22/2021	

FIX/NAVAID	LAT/LONG	C	FO/FB	LEG TYPE	TC	DIST (NM)	ALTITUDE	SPEED	REMARKS
En Route Transition									
BITTE	294417.63N / 0830852.72W	Y		IF					BITTE.JAFAR2
BRKWL	291729.56N / 0821128.78W	Y	FB	TF	117.86	56.77	17000BFL240	AT 280K	
JAFAR	285913.00N / 0820249.00W	Y	FB	TF	157.37	19.75	13000BFL190		
En Route Transition									
BRKWL	291729.56N / 0821128.78W	Y		IF			17000BFL240	AT 280K	BRKWL.JAFAR2
JAFAR	285913.00N / 0820249.00W	Y	FB	TF	157.37	19.75	13000BFL190		
En Route Transition									
COEDY	313741.40N / 0831826.33W	Y		IF					COEDY.JAFAR2
BUULL	305231.77N / 0825113.12W	Y	FB	TF	152.51	50.74			
HUNKR	300705.07N / 0822418.74W	Y	FB	TF	152.74	50.95	AT/BELOW FL260		
DOWNO	294637.09N / 0821839.33W	Y	FB	TF	166.44	21.00	AT/ABOVE FL240		
BRKWL	291729.56N / 0821128.78W	Y	FB	TF	167.81	29.72	17000BFL240	AT 280K	
JAFAR	285913.00N / 0820249.00W		FB	TF	157.37	19.75	13000BFL190		
En Route Transition									
ILEXX	302911.25N / 0830608.98W	Y		IF					ILEXX.JAFAR2
HUNKR	300705.07N / 0822418.74W	Y	FB	TF	121.16	42.40	AT/BELOW FL260		
DOWNO	294637.09N / 0821839.33W	Y	FB	TF	166.44	21.00	AT/ABOVE FL240		
BRKWL	291729.56N / 0821128.78W	Y	FB	TF	167.81	29.72	17000BFL240	AT 280K	
JAFAR	285913.00N / 0820249.00W	Y	FB	TF	157.37	19.75	13000BFL190		
Common Route									
JAFAR	285913.00N / 0820249.00W	Y		IF			13000BFL190		JAFAR.JAFAR2
CRPIT	285249.26N / 0815522.49W	Y	FB	TF	134.30	09.13	12000B15000		
LAMMP	284719.11N / 0814553.93W	Y	FB	TF	123.36	09.97			

FEDERAL AVIATION ADMINISTRATION
FLIGHT STANDARDS SERVICE
STAR (DATA RECORD)

Arrival Name JAFAR (RNAV)	Number TWO	STAR Computer Code JAFAR.JAFAR2	Superseded Number ONE	Dated 04/22/2021	Effective Date
-------------------------------------	----------------------	---	---------------------------------	----------------------------	----------------

FIX/NAVAID	LAT/LONG	C	FO/FB	LEG TYPE	TC	DIST (NM)	ALTITUDE	SPEED	REMARKS
Common Route									
JAFAR	285913.00N / 0820249.00W	Y		IF			13000BFL190		JAFAR.JAFAR2
RINGG	285246.17N / 0815514.86W	Y	FB	TF	134.05	09.24			
FLIPY	284818.00N / 0815044.43W	Y	FO	TF	138.38	05.96	AT 11000	AT 250K	
KISM,KORL				FM	138.38				

Runway Transition									
LAMMP	284719.11N / 0814553.93W	Y		IF					
YAGGO	284414.28N / 0812619.08W	Y	FO	TF	100.04	17.48	AT 6000	AT 210K	
KMCO:RWY 17L,RWY 17R,RWY 18L,RWY 18R				FM	100.04				

Runway Transition									
LAMMP	284719.11N / 0814553.93W	Y		IF					
WISHH	284250.75N / 0813817.60W	Y	FB	TF	123.69	08.04	10000B12000	AT 250K	
HARAM	283619.44N / 0812540.10W	Y	FB	TF	120.31	12.87			
DORII	283416.14N / 0812526.98W	Y	FB	TF	174.63	02.06	AT/ABOVE 8000	AT 220K	
BRICE	282053.00N / 0812527.00W	Y	FO	TF	180.00	13.35	AT 5000	AT 210K	
KMCO:RWY 35L,RWY 35R,RWY 36L,RWY 36R				FM	180.00				

