



Flight Procedures Cover Page	Task Action: P-NOTAM	Task Type: IAP	Estimated Chart Date: 03/24/2022	APWS Task ID: 5ACD0712AAD546808646299FABB7B2DA	APWS Project ID: 042E498743D3499EA206437D09AF7497
Procedure: RNAV (GPS) RWY 15 AMDT 1B		Enroute: NO	Specialist: Harris, Michael		Agreement Number:
Airport ID: KEQA			Airport City: EL DORADO		State: KS
Facility ID:	Facility Type:	Flight Inspection Remark Type:			
<p><b>Procedure Comments:</b>            PENDING RWY 15 VGSI DATA (TCH) REQUIRES NON-COINCIDENT NOTE REMOVAL.</p> <p>PROCESSED IAW TECHNICAL SUPPORT GROUP (AJF-17) MEMO DATED 07/07/2021, SUBJECT, GUIDANCE FOR PROCEDURAL CHANGES REQUIRING FLIGHT INSPECTION/VALIDATION.</p> <p>CONTACT ALLAN WILL, 405.954.6103.</p>					

07/18/2022

WAAS CH <b>56334</b> <b>W15A</b>	APP CRS <b>154°</b>	Rwy Idg TDZE Apt Elev	<b>4200</b> <b>1378</b> <b>1379</b>
--	------------------------	-----------------------------	---

OLD

RNAV (GPS) RWY 15

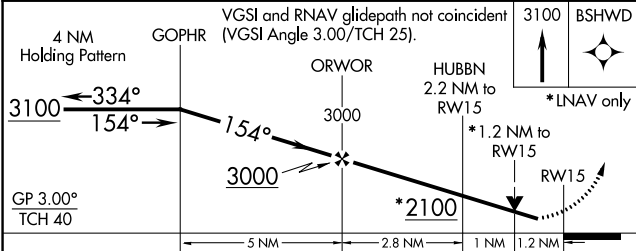
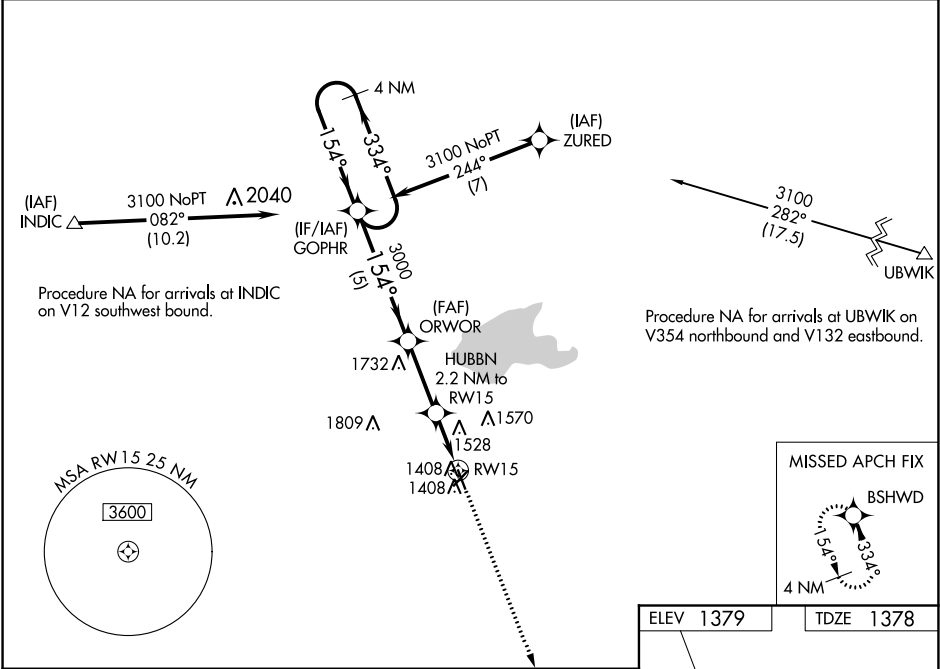
EL DORADO/CAPT JACK THOMAS MEML (EQA)

**NA**

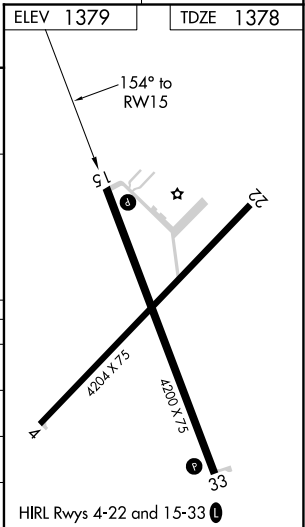
For uncompensated Baro-VNAV systems, LNAV/VNAV NA below -17°C (2°F) or above 54°C (130°F). DME/DME RNP-0.3 NA. Helicopter visibility reduction below ¾ SM NA. When local altimeter setting not received, use Colonel James Jabara altimeter setting and increase all DA 51 feet and all MDA 60 feet; increase LNAV/VNAV all Cats visibility ½ mile. Baro-VNAV and VDP NA when using Colonel James Jabara altimeter setting.

**MISSED APPROACH:**  
Climb to 3100 direct BSHWD and hold.

AWOS-3P <b>120.875</b>	WICHITA APP CON <b>134.8 269.1</b>	UNICOM <b>122.8 (CTAF) 0</b>
---------------------------	---------------------------------------	---------------------------------



CATEGORY	A	B	C	D
LPV DA	1628-1	250 (300-1)		NA
LNAV/VNAV DA	1843-1½	465 (500-1½)		NA
LNAV MDA	1780-1	402 (500-1)		NA
CIRCLING	1820-1 441 (500-1)	1960-1 581 (600-1)		NA



NC-2, 02 DEC 2021 to 30 DEC 2021

NC-2, 02 DEC 2021 to 30 DEC 2021