


Flight Procedure Tracking Form		Action: AMENDMENT	Task Type: IAP	Date Open: 09/25/2019	Task #: 2019092533522401002	Request #: 20190925335224
Procedure: APPROACH VOR RWY 31 AMDT 2A			Airport ID: KMIW	Airport: MARSHALLTOWN MUNI		Reimbursable #: NO
City: MARSHALLTOWN	ST: IA	GPS #:	Estimated Chart Date: 03/26/2020		FICO #:	
Fac ID: N/A		Fac. Type:		Specialist: DALE SICKELS		
Procedure Review						
	Rec'd	Rel'd	Full Name	Comments		
Lead:	09/30/2019			 Digitally signed by JON DENTON Feb 21, 2020		
QA:						
Liaison:						
Procedure Comments: ENROUTE-NON Remark Type: INFORMATION						
PROCESSED IAW AIRCRAFT OPERATIONS GROUP (AJW-33) MEMO, OCTOBER 3, 2018, SUBJECT: FLIGHT INSPECTION REVIEW NOT REQUIRED. P-NOTAM. CIRCLING ICON. ACTIVE DATA USED. CONTACT DAVID DANNER, AJV-A421, 405-954-5077.						

QUALITY
 41
 CHECKED
 DNAC

VOR/DME JWJ
109.4
Chan **31**

APP CRS
320°

Rwy Idg
TDZE **973**
Apt Elev **974**

OLD

VOR RWY 31

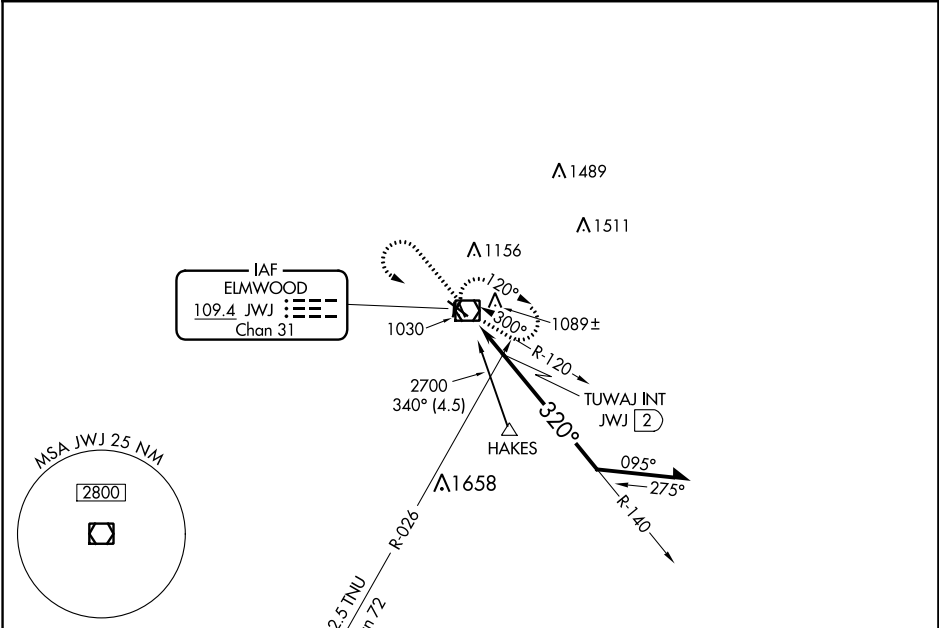
MARSHALLTOWN MUNI (MIW)

⚠

When local altimeter setting not received, use Grinnell altimeter setting and increase all MDA 80 feet; increase S-31 and Circling Cat C and D and TUWAJ fix minimums S-31 Cat C and D visibility ¼ mile.

MISSED APPROACH: Climb to 2700 then left turn direct JWJ VOR/DME and hold.

ASOS 128.325	WATERLOO APP CON ★ 120.9	CLNC DEL 120.9	UNICOM 122.8 (CTAF) 0
------------------------	------------------------------------	--------------------------	--



ELEV 974

TDZE 973

2700

JWJ

*1700 when using Grinnell altimeter setting.

JWJ VOR/DME

Remain within 10 NM

TUWAJ INT JWJ 2

140°

320°

2700

1620*

≤ 3.03°

TCH 37

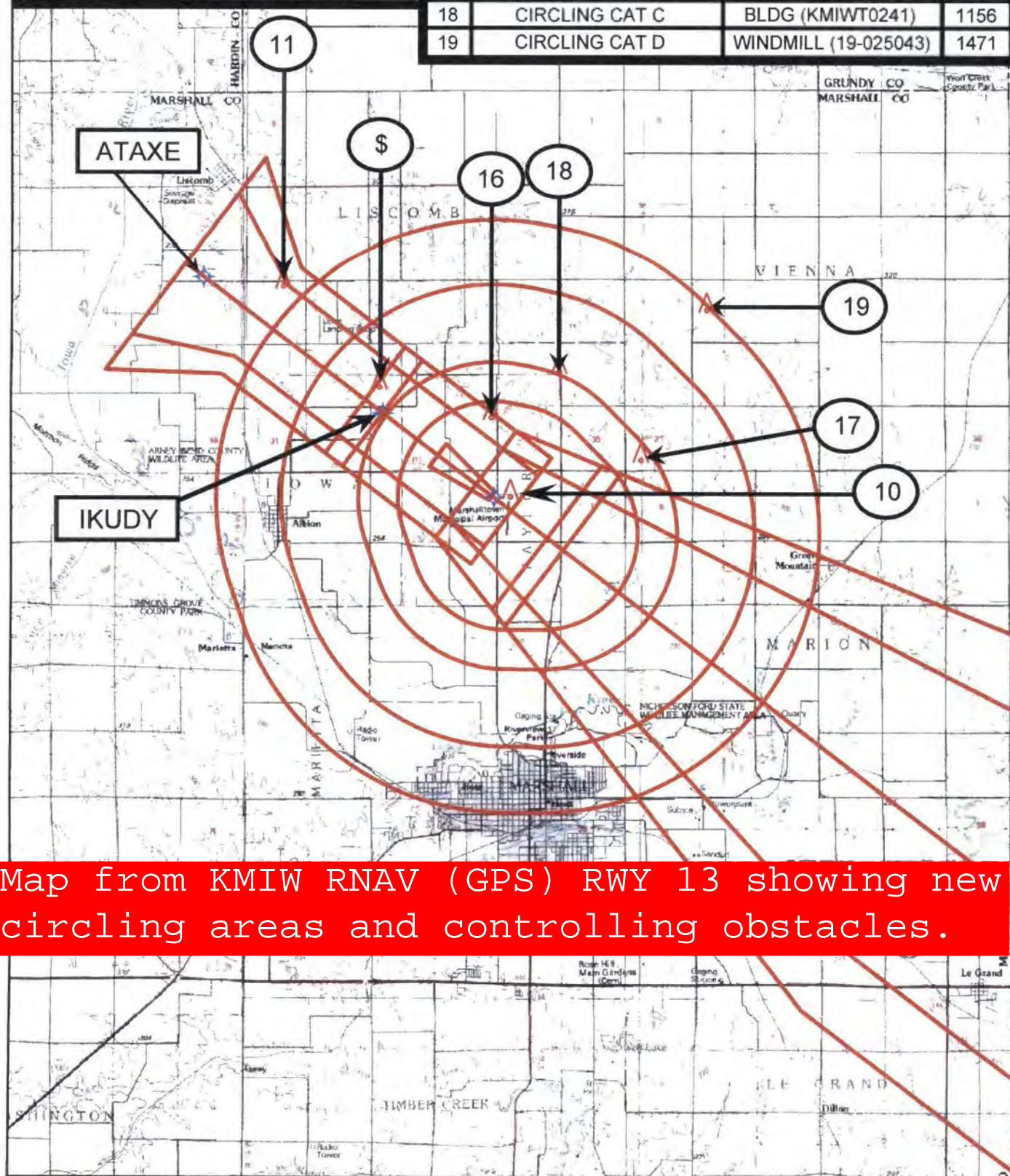
0.1

1.9 NM

CATEGORY	A	B	C	D
S-31	1620-1 647 (700-1)		1620-1¾ 647 (700-1¾)	1620-2 647 (700-2)
CIRCLING	1620-1 646 (700-1)		1620-1¾ 646 (700-1¾)	1620-2 646 (700-2)
TUWAJ FIX MINIMUMS				
S-31	1360-1 387 (400-1)			1360-1¼ 387 (400-1¼)
CIRCLING	1400-1 426 (500-1)	1440-1 466 (500-1)	1440-1½ 466 (500-1½)	1540-2 566 (600-2)

MIRL Rwy 13-31 and 18-36 **0**
REIL Rwy 13 and 31 **0**

APT ID:	KMIW	ID	SEGMENT	OBSTRUCTION	ELEV
APT NAME:	MARSHALLTOWN MUNI	11	LNAV FINAL (FAF TO SDF)	AAO (OBS-915)	1199
CITY:	MARSHALLTOWN	\$	7:1 OBSTACLE	ELEVATOR (KMIWT0197)	1083
STATE:	IA	10	LNAV FINAL (SDF TO MAP)	TREE (KMIWT0126)	1052
SCALE:	1:100,000	16	CIRCLING CAT A	TREE (KMIWT0232)	1085
PROC ID:	RNAV (GPS) RWY 13, AMDT 1	17	CIRCLING CAT B	TREE (OBS-912)	1094
		18	CIRCLING CAT C	BLDG (KMIWT0241)	1156
		19	CIRCLING CAT D	WINDMILL (19-025043)	1471



Map from KMIW RNAV (GPS) RWY 13 showing new circling areas and controlling obstacles.