

Flight Procedures Cover Page	Task Action: P-NOTAM	Task Type: IAP	Estimated Chart Date: 07/15/2021	APWS Task ID: 5A598532DA83463AB17D1AEE218135E4	APWS Project ID: 3BEC3ED20CE845248077F48A86ED73C9
Procedure: ILS OR LOC RWY 35 AMDT 7A		Enroute: NO	Specialist: Mccarthy, Christopher		Agreement Number:
Airport ID: KVLD			Airport City: VALDOSTA		State: GA
Facility ID: VLD	Facility Type: ILS	Flight Inspection Remark Type:			
<p>Procedure Comments: P-NOTAM</p> <p>ORDER 8260.3, CHAPTER 2, NEW CIRCLING CRITERIA APPLIED.</p> <p>CONTROLLING OBSTACLES:            CAT B TOWER (13-002558) 304908.00N/0831606.00W 391 (2C)            CAT C TOWER (13-003630) 304933.00N/0831803.00W 540 (4D)            CAT D TOWER (13-001829) 304905.08N/0831926.81W 701 (3C)</p> <p>JASON KRETSCHMER, 405-954-4019</p> <div style="text-align: center;"> <p><i>Digitally signed by</i>  <b>JASON KRETSCHMER</b>            May 20, 2021</p> </div>					

QUALITY  
20  
CHECKED

QUALITY  
38  
CHECKED

LOC I-VLD	APP CRS	Rwy Idg	8002
110.9	356°	TDZE	200
		Apt Elev	203

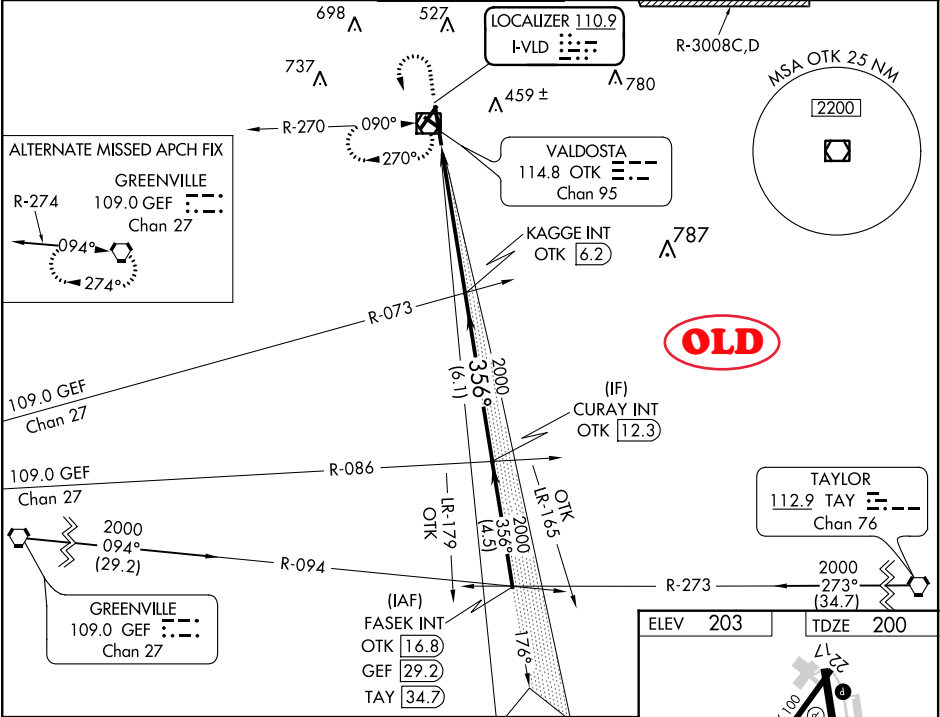
ILS or LOC RWY 35  
VALDOSTA RGNL (VLD)

For inoperative MALS, increase S-ILS 35 all Cats visibility to 1 mile and S-LOC 35 Cats A, B visibility to 1 mile, Cat E visibility to 1½ mile. Visibility reduction by helicopters NA. When local altimeter setting not received, use Moultrie altimeter setting and increase all DA 88 feet and all MDA 100 feet and increase S-LOC 35 Cats C and D visibility ¼ mile and Cat E visibility ½ mile. DME from OTK VOR/DME. For inoperative MALS, when using Moultrie altimeter setting, increase S-ILS 35 Cat E visibility to 1¼ mile and increase S-LOC 35 Cats A and B visibility to 1 mile, Cat E to 2 miles. Circling to Rwy 4, 13, and 31 NA at night.

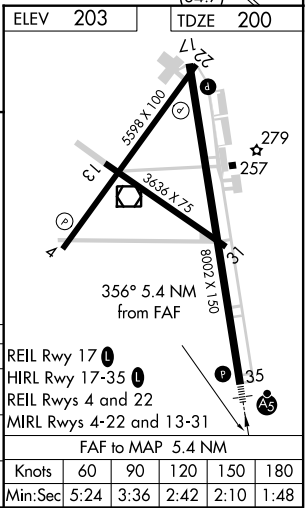
MALS

MISSED APPROACH:  
Climb to 1200 then climbing left turn to 2000 direct OTK VOR/DME and hold, continue climb-in-hold to 2000.

ASOS 126.225	VALDOSTA APP CON ★ 126.6 285.6	VALDOSTA TOWER ★ 120.9 (CTAF) 0	GND CON 121.7	UNICOM 122.95
-----------------	-----------------------------------	------------------------------------	------------------	------------------



1200	2000	OTK				
↑	↷	☐				
			KAGGE INT OTK 6.2	CURAY INT OTK 12.3		
OTK 0.8			2000	356°		2000
			2000		Procedure Turn NA	
			5.4 NM		6.1 NM	
			GS 3.00°		TCH 53	
CATEGORY	A	B	C	D	E	
S-ILS 35	489-¾ 289 (300-¾)					
S-LOC 35	660-¾ 460 (500-¾)			660-1 460 (500-1)		
CIRCLING	660-1 457 (500-1)	660-1½ 457 (500-1½)		780-2 577 (600-2)	1040-3 837 (900-3)	



SE-4, 22 APR 2021 to 20 MAY 2021

SE-4, 22 APR 2021 to 20 MAY 2021



