

Flight Procedures Cover Page	Task Action: P-NOTAM	Task Type: IAP	Estimated Chart Date: 03/25/2021	APWS Task ID: 5AB53AF8A1A6406E921364D2432794D5	APWS Project ID: 1E3AFD709F924C46BD648F548D278454
Procedure: VOR RWY 13 AMDT 19D		Enroute: NO	Specialist: Lafferty, James		Agreement Number:
Airport ID: KGRI	Airport Name: CENTRAL NEBRASKA RGNL		Airport City: GRAND ISLAND		State: NE
Facility ID:	Facility Type:	Flight Inspection Remark Type:			
<p>Procedure Comments:</p> <p>P-NOTAM</p> <p>This Cancels FDC 0/0921</p> <p>Order 8260.3, chapter 2, New Circling Criteria Applied</p> <p>Contact Dave Teffeteller at 202-267-5177</p>					

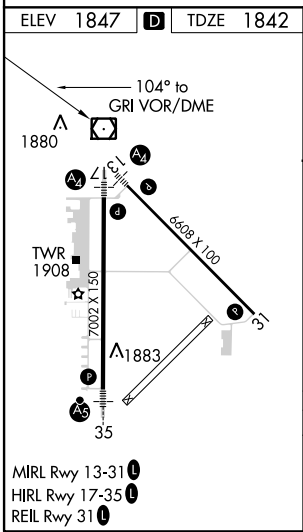
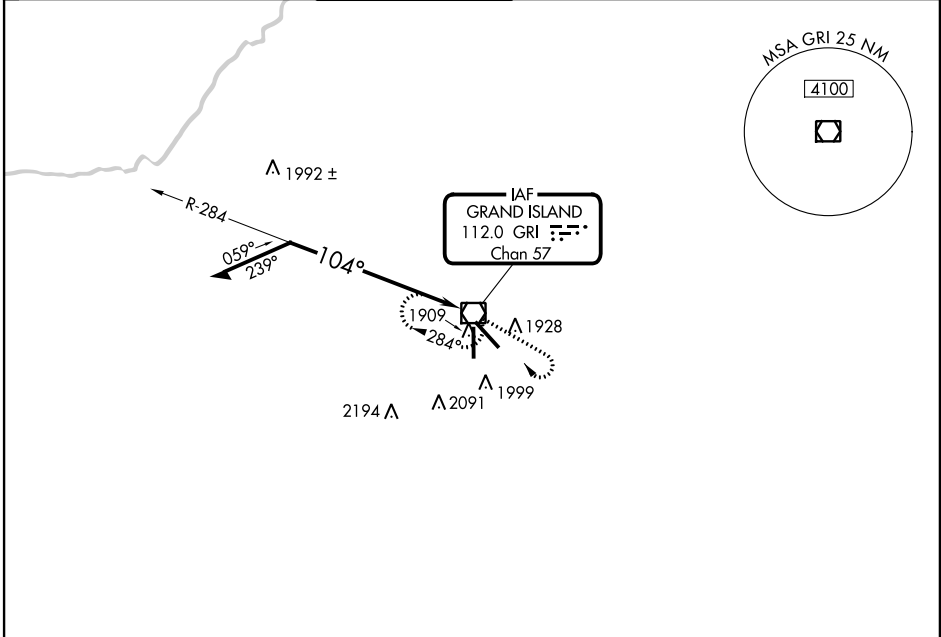
QUALITY
23
CHECKED

VOR/DME GRI	APP CRS	Rwy Idg	6608
112.0	104°	TDZE	1842
Chan 57		Apt Elev	1847

VOR RWY 13
CENTRAL NEBRASKA RGNL (GRI)

<p>When local altimeter setting not received, use Aurora altimeter setting and increase all MDA 60 feet, and increase S-13 Cat C and D visibility ¼ mile. Inop table does not apply to S-13 Cat C.</p>	<p>MALS</p> <p>4</p>	<p>MISSED APPROACH: Climb to 3600, then right turn direct GRI VOR/DME and hold.</p>
--	----------------------	---

ATIS 127.4	MINNEAPOLIS CENTER 119.4 278.8	GRAND ISLAND TOWER* 118.2 (CTAF) 259.3	GND CON 121.9 259.3	CLNC DEL 121.9 126.05 (when tower closed)	UNICOM 122.95
---------------	-----------------------------------	---	------------------------	---	------------------



ELEV 1847 D TDZE 1842		Remain within 10 NM		GRI VOR/DME		3600	3600	GRI
						284°	104°	
CATEGORY	A	B	C	D				
S-13	2300-¾ 458 (500-¾)	2300-1¼ 458 (500-1¼)	2300-1½ 458 (500-1½)	2300-1½ 458 (500-1½)				
CIRCLING	2300-1 453 (500-1)	2300-1½ 453 (500-1½)	2400-2 553 (600-2)	2400-2 553 (600-2)				

