

Flight Procedures Cover Page	Task Action: FLIGHT CHECK	Task Type: IAP	Estimated Chart Date: 10/02/2025	APWS Task ID: 59D961B1F615471DA8A01EA59BE3D681	APWS Project ID: A6F9664F294146A8A6AAEAAC50BF1301
Procedure: RNAV (GPS) RWY 35 AMDT 0A		Enroute: NO	Specialist: Young, Silvia		Agreement Number:
Airport ID: KSXK			Airport City: MAURICE		State: IA
Facility ID:	Facility Type:	Flight Inspection Remark Type: New FC Slot			
<div>Procedure Comments:</div> <div>ACTIVE DATA USED FOR KSXK AIRPORT AND RWYS.</div> <div>CANCEL NOTAM FDC 5/6754.</div> <div>CONTACT: CASIMIR TABAKA, (405) 954-7931.</div> <div><div>QUALITY 10 CHECKED</div><div>QUALITY 38 CHECKED</div></div>					

FIPC BASIC FORM						
PROCEDURE: RNAV (GPS) RWY 35 AMDT 0A			AIRPORT NAME: SIOUX COUNTY RGNL		AIRPORT ID: KSXK	SPECIAL CONTROL NO: BG-05-025-25
FAC ID: KSXK35		CITY: MAURICE			ST: IA	ORIG CHART DATE: 10/02/2025
DFL TYPE: PROC/S	THIRD PARTY: <input type="checkbox"/> YES	EST. TIME ON SITE: 0.4	REIMB. NUMBER:	PTS TASK ID: 59D961B1F615471DA8A01EA59BE3D681		
PREFLIGHT NOTES						
REVIEWER: marc webber					DATE: 06/05/2025	
COMMENTS:					CHECK ONE:	
					<input checked="" type="checkbox"/> FLT CK REQ <input type="checkbox"/> NFCR <input type="checkbox"/> REJECT	
						YES
					CPV COMPLETE?	
					X	
PROCEDURE RESULTS						
INSPECTION DATE: 06/05/2025	CREW #: VN424	N #: N75	INSTRUMENT PROCEDURE STATUS: <input checked="" type="checkbox"/> SAT <input type="checkbox"/> SAT W/CHANGES <input type="checkbox"/> UNSAT		ARINC CODING: <input checked="" type="checkbox"/> SAT <input type="checkbox"/> SAT/GOLD <input type="checkbox"/> UNSAT	
FLIGHT INSPECTOR SIGNATURE: marc webber @ 06/05/2025 21:07			PRINTED NAME: WEBBER, MARC RAYMOND			NOTAM INITIATED?
						<input type="checkbox"/> YES <input checked="" type="checkbox"/> NO
FLIGHT INSPECTOR REMARKS:						
IN-FLIGHT OBSTACLE REPORT						
OBSTRUCTION ID #:	COORDINATES OR LOCATION:	GNSS ALTITUDE (MSL):	BAROMETRIC ALTITUDE (MSL):	HEIGHT ABOVE GROUND LEVEL:		

WAAS CH 93742 W35A	APP CRS 353°	Rwy Idg TDZE 1409 Apt Elev 1409
--	------------------------	---

RNAV (GPS) RWY 35
SIOUX COUNTY RGNL(SXX)

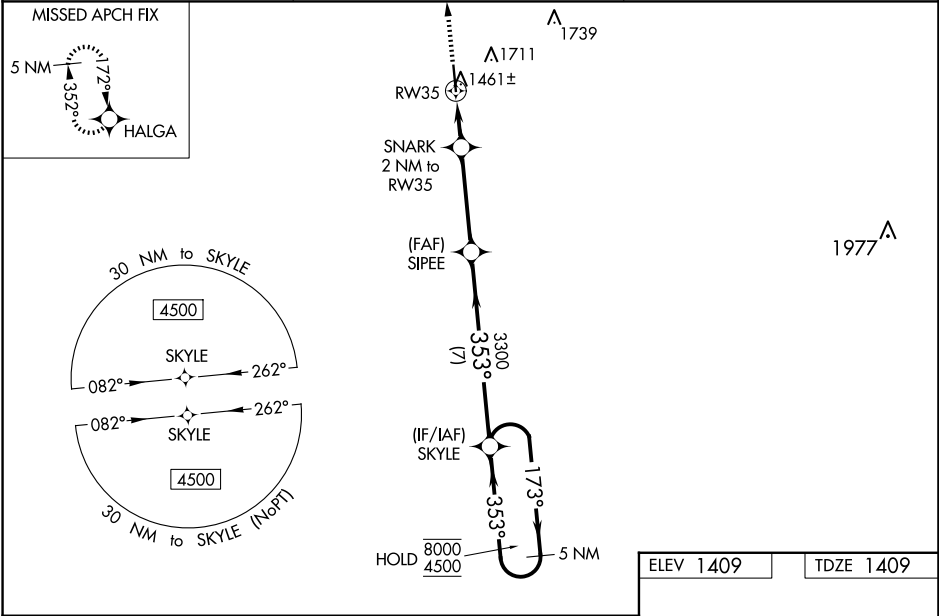
RNP APCH.

▼ Baro-VNAV and VDP NA when using Le Mars altimeter setting. For uncompensated Baro-VNAV systems, LNAV/VNAV NA below -17°C or above 54°C. When local altimeter setting not received; use Le Mars altimeter setting; increase DA 59 feet and all MDA 60 feet, increase LNAV visibility Cat C/D to ½ SM. For inop ALS, increase LNAV/VNAV all Cats visibility to ¾ SM, and LNAV Cat C/D visibility to ¾ SM. For inop ALS when using Le Mars altimeter setting increase LNAV/VNAV all Cats visibility to ¾ SM.

MALSR

MISSED APPROACH: Climb to 4500 direct HALGA and hold.

AWOS-3P 120.075	SIOUX CITY APP CON ★ 124.6 307.0	UNICOM 122.7 (CTAF) 0
---------------------------	--	---------------------------------



4500 HALGA

↑

★LNAV only

*0.9 NM to RW35

RW35

0.9 NM

1.1 NM

3.8 NM

7 NM

SIPEE

3300

353°

3300

2100*

SKYLE

5 NM Holding Pattern

173°

8000

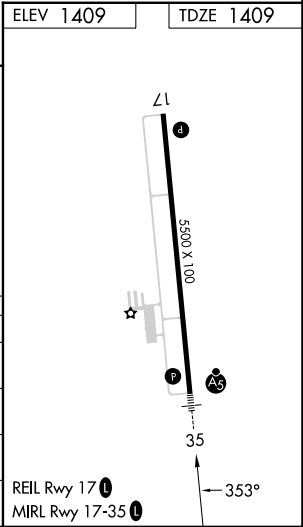
4500

353°

GP 3.00°

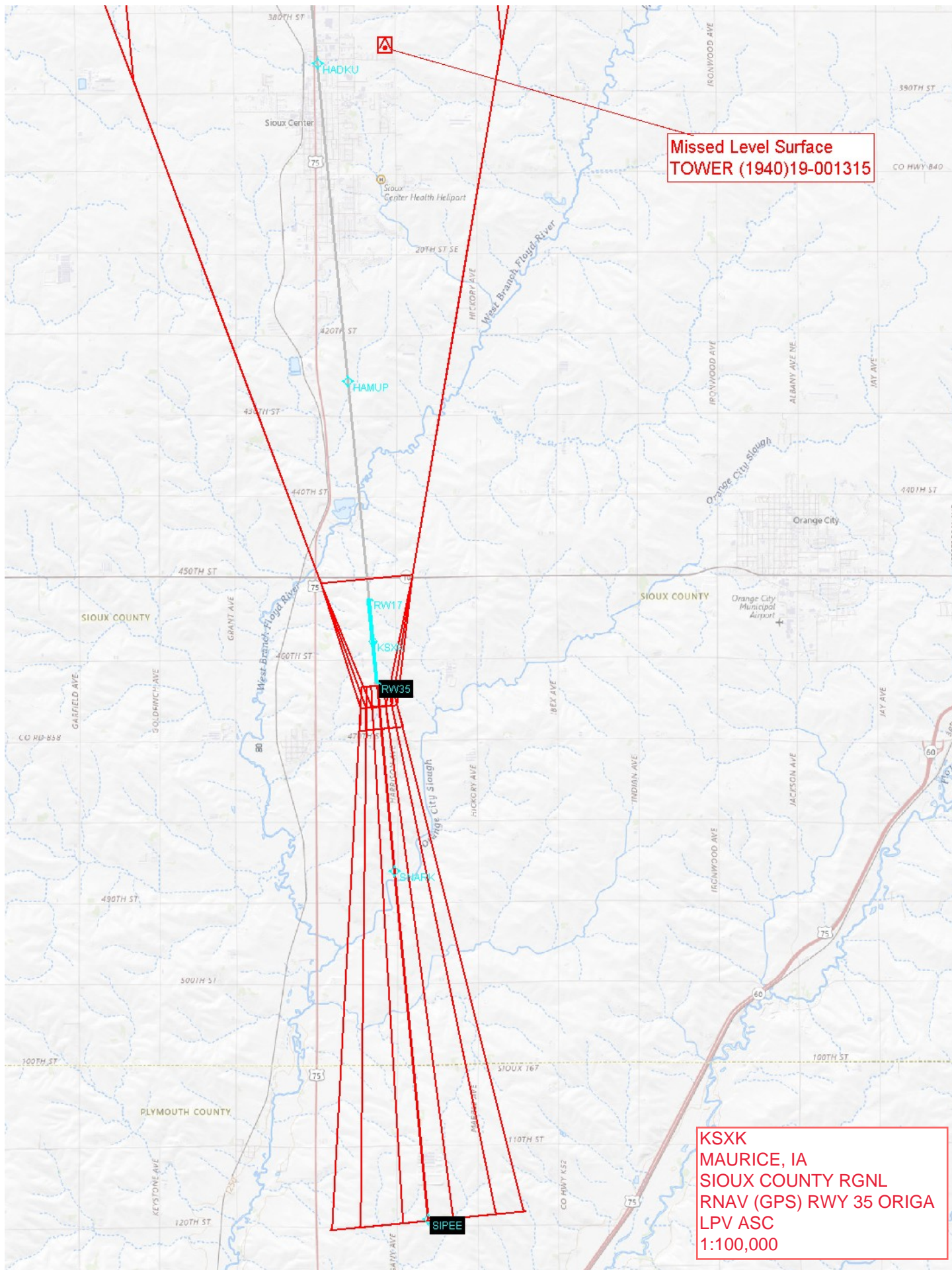
TCH 40

CATEGORY	A	B	C	D
LPV DA		1609-½	200 (200-½)	
LNAV/VNAV DA		1659-½	250 (300-½)	
LNAV MDA		1720-½	311 (400-½)	
CIRCLING	1820-1 411 (500-1)	2080-1 671 (700-1)	2080-2 671 (700-2)	2080-2¼ 671 (700-2¼)



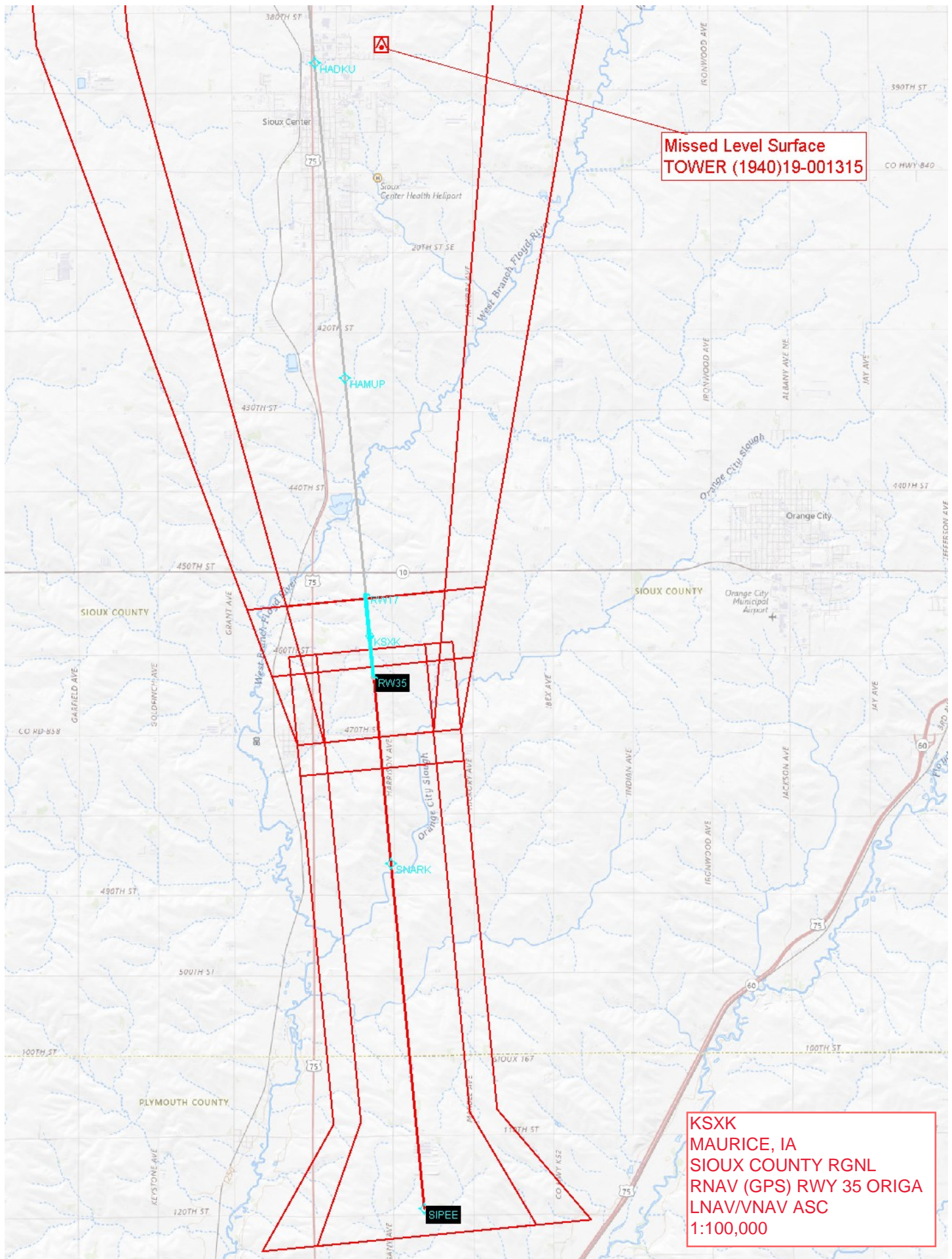
NC-3, 17 APR 2025 to 15 MAY 2025

NC-3, 17 APR 2025 to 15 MAY 2025



Missed Level Surface
TOWER (1940) 19-001315

KSXK
MAURICE, IA
SIOUX COUNTY RGNL
RNAV (GPS) RWY 35 ORIGA
LPV ASC
1:100,000



Missed Level Surface
TOWER (1940)19-001315

KSXK
MAURICE, IA
SIOUX COUNTY RGNL
RNAV (GPS) RWY 35 ORIGA
LNAV/VNAV ASC
1:100,000

