

MAURICE, IOWA


AL-11316 (FAA)

FIG

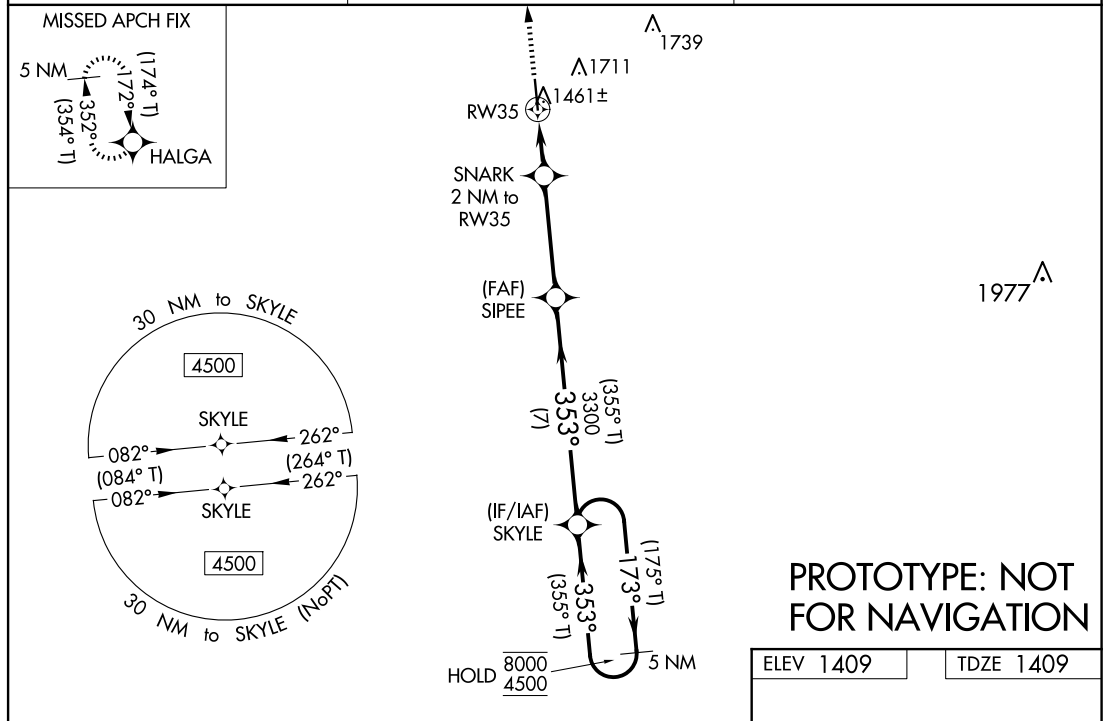
WAAS CH 93742 W35A	APP CRS 353°	Rwy Ldg TDZE 1409 Apt Elev 1409
--	------------------------	---

RNAV (GPS) RWY 35

SIoux COUNTY RGNL (SXXK)

RNP APCH - GPS.	<p>Baro-VNAV and VDP NA when using LRJ altimeter setting. For uncompensated Baro-VNAV systems, LNAV/VNAV NA below -17°C or above 54°C. When local altimeter setting not received; use LRJ altimeter setting: increase LPV DA to 1668 feet, increase LNAV/VNAV DA to 1718 feet; increase all MDAs 60 feet and LNAV Cat C/D visibility to 1/8 SM. For inop ALS, increase LNAV/VNAV all Cats visibility to 3/4 SM, and LNAV Cat C/D visibility to 7/8 SM. For inop ALS when using LRJ altimeter setting, increase LNAV/VNAV all Cats visibility to 7/8 SM and LNAV Cat C/D visibility to 1 SM.</p>	<p>MALS</p> 	<p>MISSED APPROACH: Climb to 4500 direct HALGA and hold continue climb-in-hold to 4500.</p>
-----------------	--	--	--

AWOS-3P 120.075	SIoux CITY APP CON ★ 124.6 307.0	UNICOM 122.7 (CTAF)
---------------------------	--	-------------------------------



4500	HALGA	SIPEE	SKYLE	5 NM Holding Pattern
↑	✧	✧	✧	✧
0.9 NM to RW35	0.9 NM to RW35	0.9 NM to RW35	0.9 NM to RW35	0.9 NM to RW35
2100	3300	3300	3300	3300
1609-1/2	1659-1/2	1720-1/2	1820-1	2080-1
200 (200-1/2)	250 (300-1/2)	311 (400-1/2)	411 (500-1)	671 (700-1)
2080-2	2080-2 1/4	2080-2 1/4	2080-2 1/4	2080-2 1/4
671 (700-2)	671 (700-2 1/4)	671 (700-2 1/4)	671 (700-2 1/4)	671 (700-2 1/4)
GP 3.00°	TCH 40	GP 3.00°	TCH 40	GP 3.00°
TCH 40	TCH 40	TCH 40	TCH 40	TCH 40
REIL Rwy 17 and 35	MIRL Rwy 17-35	REIL Rwy 17 and 35	MIRL Rwy 17-35	REIL Rwy 17 and 35
MIRL Rwy 17-35	MIRL Rwy 17-35	MIRL Rwy 17-35	MIRL Rwy 17-35	MIRL Rwy 17-35

MAURICE, IOWA

Orig-A FIG

42°59'N-96°10'W

RNAV (GPS) RWY 35

SIoux COUNTY RGNL (SXXK)

AUTOMATED AL-11316 RNAV (GPS) RWY 35

NC-3
29 APR 2025
COMPILER: CG
REVIEWER:
DBL CHKR:
EFF: FIG