

Flight Procedures Cover Page	Task Action: P-NOTAM	Task Type: IAP	Estimated Chart Date: 09/09/2021	APWS Task ID: 59B4BE23AAEB41ABB0A3EAA29E5F69AA	APWS Project ID: 9F9A871C174D4830A9CE728105426C2B
Procedure: VOR RWY 9L AMDT 2F		Enroute: NO	Specialist: Cannon, Brett		Agreement Number:
Airport ID: KBOW			Airport City: BARTOW		State: FL
Facility ID:	Facility Type:	Flight Inspection Remark Type:			
<div> <div> Procedure Comments: P-NOTAM </div> <div> This Cancels FDC 0/3267 </div> <div> Order 8260.3, chapter 2, New Circling Criteria Applied </div> <div> Contact Dave Teffeteller at 202-267-5177 </div> </div> <div> <div> <div>QUALITY</div> <div>18</div> <div>CHECKED</div> </div> <div> <div>QUALITY</div> <div>38</div> <div>CHECKED</div> </div> </div>					

BARTOW, FLORIDA

AL-5838 (FAA)

19227

VORTAC LAL	Rwy Idg	5000
116.0	TDZE	125
Chan 107	Apt Elev	125

APP CRS  
101°

VOR RWY 9L

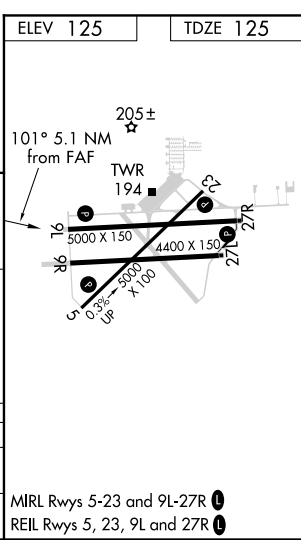
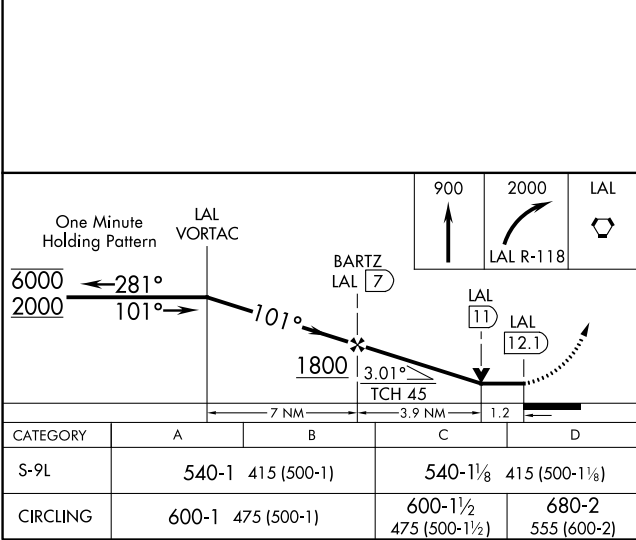
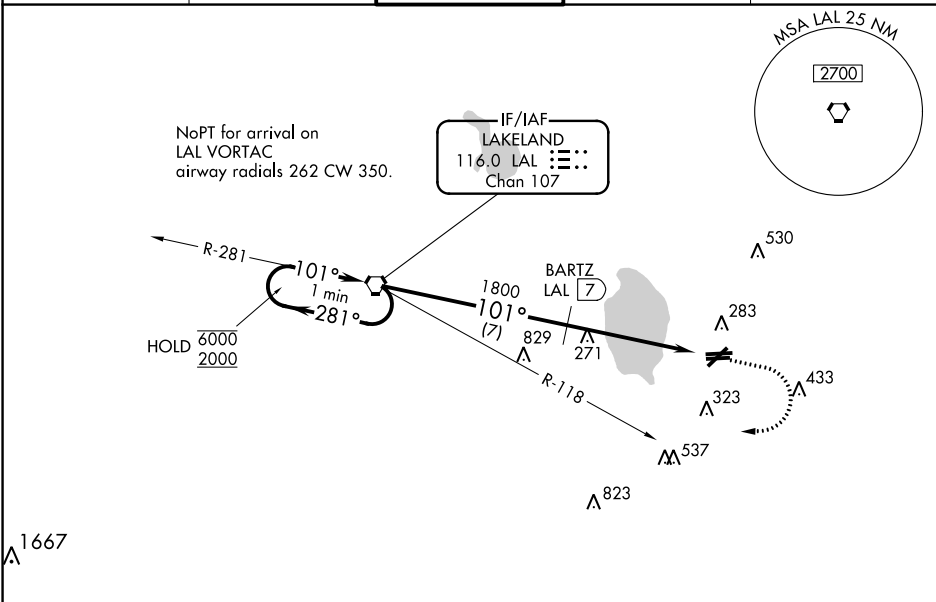
BARTOW EXECUTIVE (BOW)

DME required.

⚠ Circling Rwy 9R, 27L NA at night. Rwy 9L helicopter visibility reduction below  $\frac{1}{4}$  SM NA. When local altimeter setting not received, use Tampa Intl altimeter setting and increase all MDA 120 feet and S-9L Cat C/D visibility  $\frac{3}{8}$  SM and Circling Cat D visibility  $\frac{1}{4}$  SM. VDP NA when using Tampa Intl altimeter setting.

MISSED APPROACH: Climb to 900 then climbing right turn to 2000 on LAL VORTAC R-118 to LAL VORTAC and hold.

AWOS-3 123.775	TAMPA APP CON 120.65 290.3	BARTOW TOWER ★ 121.2 (CTAF)	GND CON 121.9	UNICOM 122.95
-------------------	-------------------------------	--------------------------------	------------------	------------------



BARTOW, FLORIDA  
Amdt 2E 15AUG19

27°57'N-81°47'W

BARTOW EXECUTIVE (BOW)  
VOR RWY 9L

SE-3, 25 MAR 2021 to 22 APR 2021

SE-3, 25 MAR 2021 to 22 APR 2021



