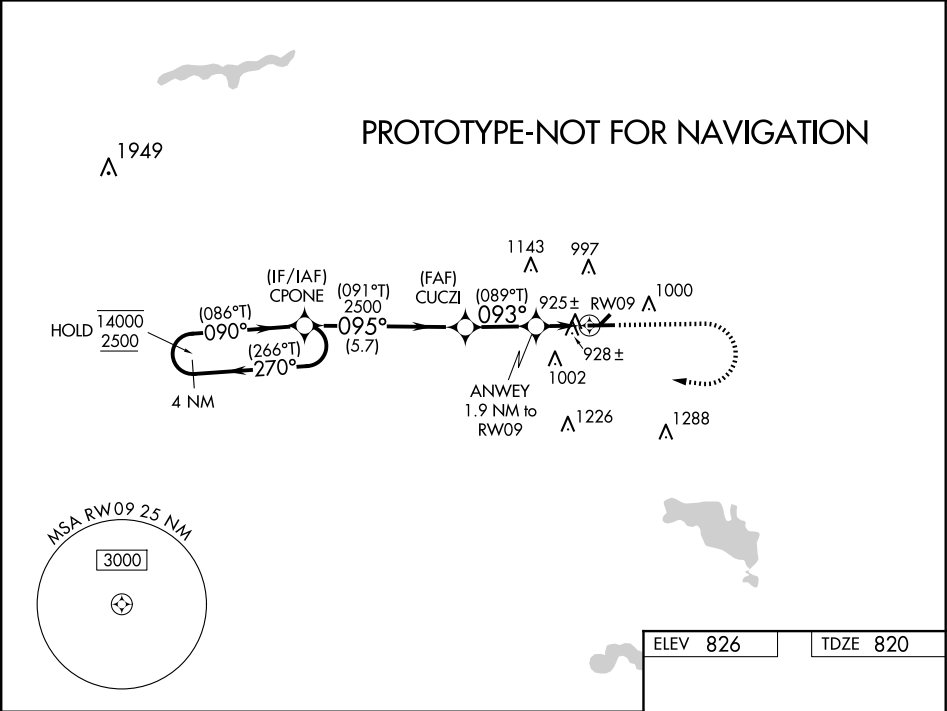



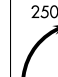
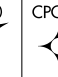
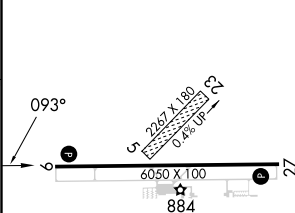
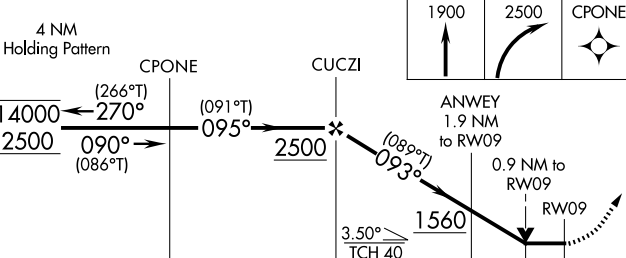

WAAS CH <b>69325</b> <b>W09A</b>	APP CRS <b>093°</b>	Rwy Idg TDZE Apt Elev	<b>6008</b> <b>820</b> <b>826</b>
--	------------------------	-----------------------------	---

RNAV (GPS) RWY 9

GOSHEN MUNI (GSH)

RNP APCH - GPS.		MISSED APPROACH: Climb to 1900 then climbing right turn to 2500 direct CPONE and hold.	
Circling NA to Rwy 5 and 23. Rwy 9 helicopter visibility reduction below 3/4 SM NA. VDP NA when using ASW altimeter setting. When local altimeter setting not received, use ASW altimeter setting and increase all MDAs 40 feet; increase LP and LNAV visibility Cat C/D 1/2 SM and Circling visibility Cat D 1/2 SM.			
ASOS <b>121.45</b>	SOUTH BEND APP CON* <b>132.05 257.8</b>	CLNC DEL <b>125.25</b>	UNICOM <b>123.05 (CTAF) 0</b>



4 NM Holding Pattern		  		
				
CATEGORY	A	B	C	D
LP MDA	1180-1		360 (400-1)	
LNAV MDA	1200-1		380 (400-1)	
CIRCLING	1300-1 474 (500-1)	1320-1 494 (500-1)	1500-2 674 (700-2)	1560-2¼ 734 (800-2¼)
		HIRL Rwy 9-27  REIL Rwy 9 and 27 