

Flight Procedures Cover Page	Task Action: P-NOTAM	Task Type: IAP	Estimated Chart Date: 07/11/2024	APWS Task ID: 589DAF8A05F341C8A3C89B52E3D25C5A	APWS Project ID: 19083D8CFAA94BF0B4047495E07ECE68
Procedure: RNAV (GPS) RWY 25 AMDT 0F		Enroute: NO	Specialist: Boone-walt, Rose		Agreement Number:
Airport ID: KWBW			Airport City: WILKES-BARRE		State: PA
Facility ID:	Facility Type:	Flight Inspection Remark Type:			
<div>Procedure Comments: Processed IAW Technical Support Group (AJF-17) Memo dated 07/07/2021, Subject: Guidance for Procedural Changes Requiring Flight Inspection/Validation CONTACT: DAVID M. DANNER AJV-A420 LEAD: 405.954.5077</div>					



WAAS CH 45824 W25A	APP CRS 246°	Rwy Idg 3375 TDZE 543 Apt Elev 544
--	------------------------	---

OLD

RNAV (GPS) RWY 25

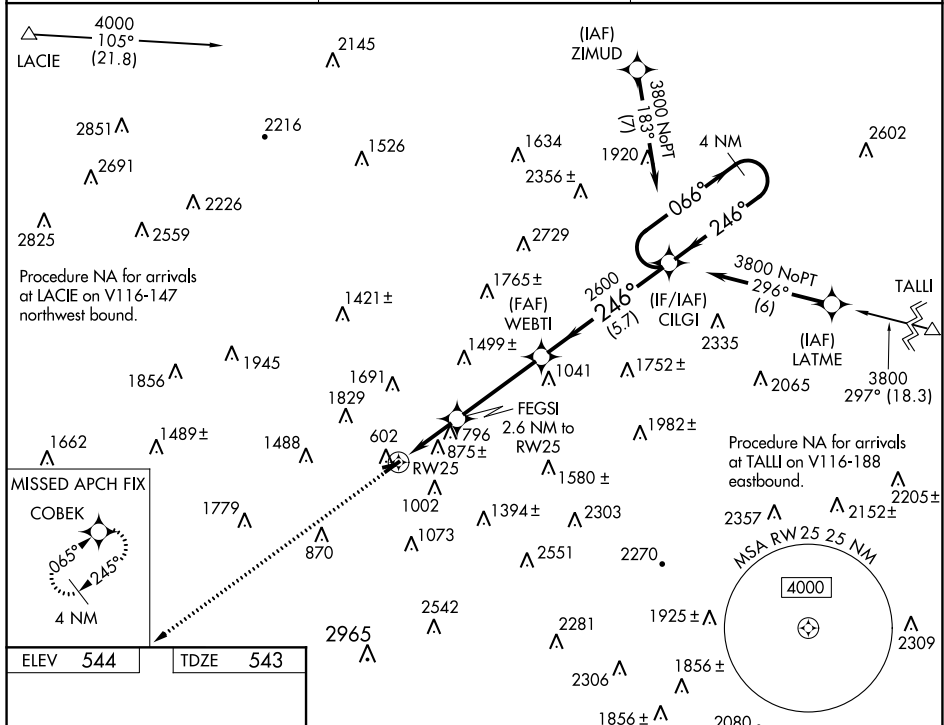
WILKES-BARRE WYOMING VALLEY (WRW)

RNP APCH

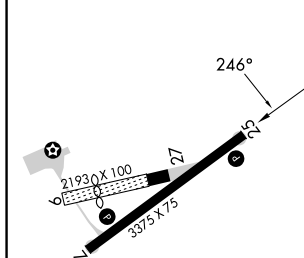
T Circling NA to Rwy 9 and 27. Rwy 25 helicopter visibility reduction below 1 SM NA. Baro-VNAV NA. Use Wilkes-Barre/Scranton altimeter setting. Circling Rwy 7 NA at night. Circling **A** NA NA NW of Rwy 7-25. Procedure NA at night.

MISSED APPROACH:
Climb to 3700 direct
COBEK and hold.

AVP ASOS 135.75	WILKES-BARRE APP CON 126.3 256.7	UNICOM 122.8 (CTAF) 0
---------------------------	--	---------------------------------



ELEV	544		TDZE	543
------	-----	--	------	-----



3700 ↑	COBEK ✦	VGS1 and RNAV glidepath not coincident (VGS1 Angle 3.75/TCH 40).		4 NM Holding Pattern
* LNAV only				
CATEGORY		A	B	C
LPV DA		NA		
LNAV/VNAV	DA	NA		
LNAV MDA		1240-1 697 (700-1)		NA
CIRCLING		1320-1 776 (800-1)	1380-1¼ 836 (900-1¼)	NA

WILKES-BARRE, PENNSYLVANIA

Orig-E 14JUL22

WILKES-BARRE WYOMING VALLEY (WRW)

41°18'N-75°51'W

RNAV (GPS) RWY 25

NE-4, 28 DEC 2023 to 25 JAN 2024

NE-4, 28 DEC 2023 to 25 JAN 2024