

Flight Procedures Cover Page	Task Action: P-NOTAM	Task Type: IAP	Estimated Chart Date: 07/14/2022	APWS Task ID: 583049B7F26B4B36895E984231455F78	APWS Project ID: 296C6919721D408FA4B8115FD60FF2F1
Procedure: RNAV (GPS) RWY 8 AMDT 2D		Enroute: NO	Specialist: Harris, Michael		Agreement Number:
Airport ID: KGLW		Airport City: GLASGOW		State: KY	
Facility ID:	Facility Type:	Flight Inspection Remark Type:			
<p>Procedure Comments: DELETE NOTE: CIRCLING TO RWY 26 NA AT NIGHT. CIRCLING REMOVED RWY 8 PROCEDURE.</p> <p>PROCESSED IAW TECHNICAL SUPPORT GROUP (AJF-17) MEMO DATED 07/07/2021, SUBJECT, GUIDANCE FOR PROCEDURAL CHANGES REQUIRING FLIGHT INSPECTION/VALIDATION.</p> <p>CONTACT ALLAN WILL, 405.954.6103.</p>					

03/02/2022

QUALITY

14

CHECKED

QUALITY

38

CHECKED

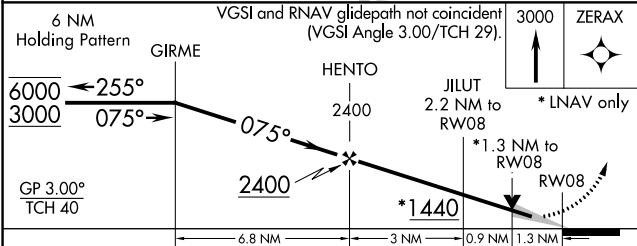
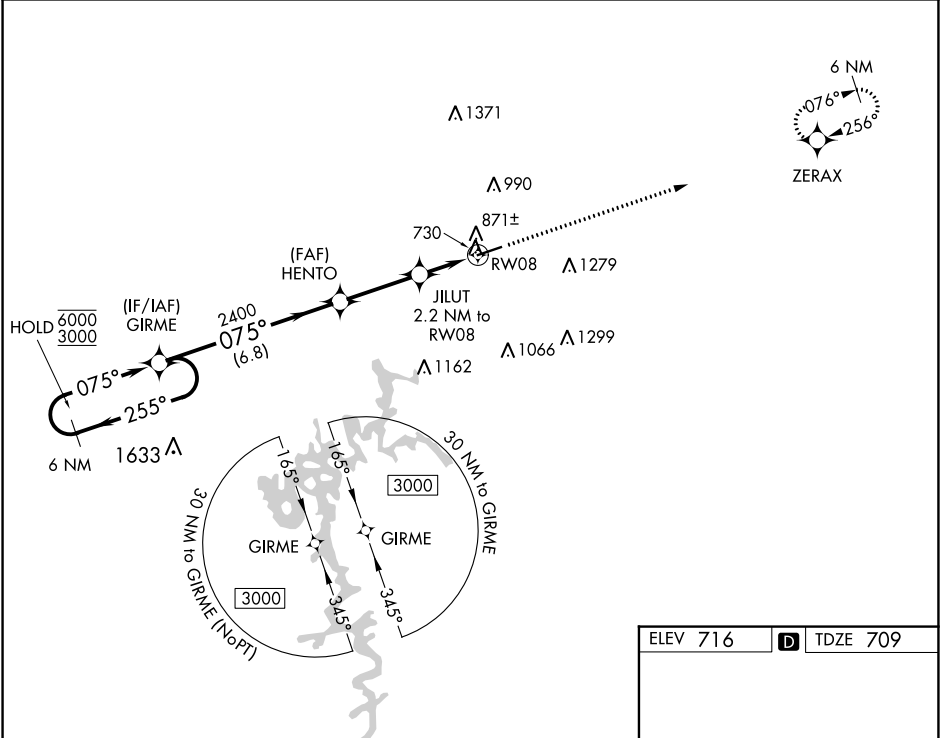
WAAS CH 77607 W08A	APP CRS 075°	Rwy Idg TDZE 709 Apt Elev 716
----------------------------------------	------------------------	---------------------------------------------------

RNAV (GPS) RWY 8

GLASGOW MUNI (GLW)

RNP APCH.	MISSED APPROACH: Climb to 3000 direct ZERAX and hold.
▼ ▲ Circling to Rwy 26 NA at night. For uncompensated Baro-VNAV systems, LNAV/VNAV NA below -16°C or above 54°C.	

AWOS-3 118.525	MEMPHIS CENTER 132.9 290.3	UNICOM 122.8 (CTAF) 1
--------------------------	--------------------------------------	----------------------------------------



CATEGORY	A	B	C	D
LPV DA	971-1	262 (300-1)		
LNAV/VNAV DA	1125-1 3/8	416 (500-1 3/8)		
LNAV MDA	1140-1	431 (500-1)	1140-1 1/4	431 (500-1 1/4)

