

Flight Procedures Cover Page	Task Action: FLIGHT CHECK	Task Type: SID	Estimated Chart Date: 06/12/2025	APWS Task ID: 579E7AB02C0747B6A0D19F8C8D830654	APWS Project ID: 403253A14C9743A2A185908FC7167AF0
Procedure: SID GIDGET THREE (RNAV) LAS VEGAS NV KLAS		Enroute: YES	Specialist: Heiderstadt, Nicholas		Agreement Number:
Airport ID: KLAS			Airport City: LAS VEGAS		State: NV
Facility ID:	Facility Type:	Flight Inspection Remark Type: New FC Slot			
<div>Procedure Comments: ACTIVE DATA USED CONTACT JOHN BORDY 405-954-0980</div> <div>6/26/25: THIS IS A CORRECTED COPY OF THE FORM APPROVED ON 5/9/25</div> <div>1. TAKEOFF OBSTACLE NOTES: ADDED THE STATEMENT "SEE FORM 8260-15A, TAKEOFF MINIMUMS AND OBSTACLE DEPARTURE PROCEDURES (ODP)."</div> <div><div>QUALITY 16 CHECKED</div><div>QUALITY 41 CHECKED</div><div>QUALITY 8 CHECKED</div></div>					

FIPC DME/DME FORM								
PROCEDURE: SID GIDGET THREE (RNAV) LAS VEGAS NV KLAS			AIRPORT NAME: HARRY REID INTL		AIRPORT ID: KLAS	SPECIAL CONTROL NO: SG-02-153-25		
FAC ID: GIDGET3		CITY: LAS VEGAS			ST: NV	ORIG CHART DATE: 06/12/2025		
DFL TYPE: PROC/D	THIRD PARTY: <input type="checkbox"/> YES	EST. TIME ON SITE: 1.0	REIMB. NUMBER:		PTS TASK ID: 579E7AB02C0747B6A0D19F8C8D830654			
PREFLIGHT NOTES								
REVIEWER: troy e devine					DATE: 05/06/2025			
COMMENTS:					CHECK ONE: <input checked="" type="checkbox"/> FLT CK REQ <input type="checkbox"/> NFCR <input type="checkbox"/> REJECT			
							YES	NO
					CPV COMPLETE?		X	
PROCEDURE RESULTS								
INSPECTION DATE: 05/06/2025		CREW #: VN502	N #: N71	INSTRUMENT PROCEDURE STATUS: <input checked="" type="checkbox"/> SAT <input type="checkbox"/> SAT W/CHANGES <input type="checkbox"/> UNSAT		ARINC CODING: <input checked="" type="checkbox"/> SAT <input type="checkbox"/> SAT/GOLD <input type="checkbox"/> UNSAT		
FLIGHT INSPECTOR SIGNATURE: troy e devine @ 05/06/2025 20:56			PRINTED NAME: DEVINE, TROY ELLEN			NOTAM INITIATED? <input type="checkbox"/> YES <input checked="" type="checkbox"/> NO		
FLIGHT INSPECTOR REMARKS: SG -02-153-25 GIDGET3 DEPARTURE - New transition flown NICLE -IWANS-SSKEE flown at 9400', New MOCAs, Coms and radar - SAT DME/DME submitted for analysis DME's used: UTI, LAS, IGM, PGS, GCN, TBC, FLG, PGA.								
DME/DME STATUS: <input checked="" type="checkbox"/> SAT <input type="checkbox"/> UNSAT		SPECIALIST SIGNATURE: bob ctr graham @ 05/20/2025 14:42			PRINTED NAME: Bob Graham			
SPECIALIST REMARKS:								
IN-FLIGHT OBSTACLE REPORT								
OBSTRUCTION ID #:	COORDINATES OR LOCATION:		GNSS ALTITUDE (MSL):		BAROMETRIC ALTITUDE (MSL):		HEIGHT ABOVE GROUND LEVEL:	

FIPC DME/DME FORM								
PROCEDURE: SID GIDGET THREE (RNAV) LAS VEGAS NV KLAS			AIRPORT NAME: HARRY REID INTL		AIRPORT ID: KLAS	SPECIAL CONTROL NO: SG-02-153-25		
FAC ID: GIDGET3		CITY: LAS VEGAS			ST: NV	ORIG CHART DATE: 06/12/2025		
DFL TYPE: PROC/D	THIRD PARTY: <input type="checkbox"/> YES	EST. TIME ON SITE: 1.0	REIMB. NUMBER:		PTS TASK ID: 579E7AB02C0747B6A0D19F8C8D830654			
PREFLIGHT NOTES								
REVIEWER: troy e devine					DATE: 05/06/2025			
COMMENTS:					CHECK ONE: <input checked="" type="checkbox"/> FLT CK REQ <input type="checkbox"/> NFCR <input type="checkbox"/> REJECT			
							YES	NO
					CPV COMPLETE?		X	
PROCEDURE RESULTS								
INSPECTION DATE: 05/06/2025		CREW #: VN502	N #: N71	INSTRUMENT PROCEDURE STATUS: <input checked="" type="checkbox"/> SAT <input type="checkbox"/> SAT W/CHANGES <input type="checkbox"/> UNSAT		ARINC CODING: <input checked="" type="checkbox"/> SAT <input type="checkbox"/> SAT/GOLD <input type="checkbox"/> UNSAT		
FLIGHT INSPECTOR SIGNATURE: troy e devine @ 05/06/2025 20:56			PRINTED NAME: DEVINE, TROY ELLEN				NOTAM INITIATED? <input type="checkbox"/> YES <input checked="" type="checkbox"/> NO	
FLIGHT INSPECTOR REMARKS: SG -02-153-25 GIDGET3 DEPARTURE - New transition flown NICLE -IWANS-SSKEE flown at 9400', New MOCAs, Coms and radar - SAT DME/DME submitted for analysis DME's used: UTI, LAS, IGM, PGS, GCN, TBC, FLG, PGA.								
DME/DME STATUS: <input type="checkbox"/> SAT <input type="checkbox"/> UNSAT		SPECIALIST SIGNATURE:			PRINTED NAME:			
SPECIALIST REMARKS:								
IN-FLIGHT OBSTACLE REPORT								
OBSTRUCTION ID #:	COORDINATES OR LOCATION:		GNSS ALTITUDE (MSL):		BAROMETRIC ALTITUDE (MSL):		HEIGHT ABOVE GROUND LEVEL:	

SW-4, 31 OCT 2024 to 28 NOV 2024

LAS VEGAS, NEVADA
HARRY REID INT. (T.A.S.)

TOP ALTITUDE:
FL190

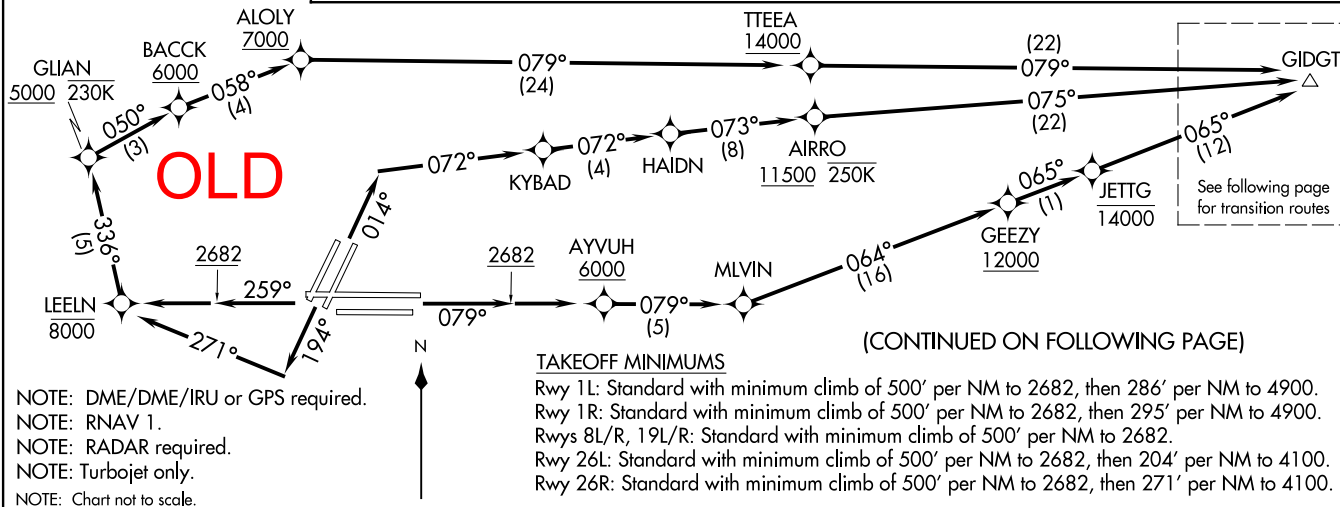
(Continued on following page)

TAKEOFF RUNWAYS 8L/R: Climb on heading 079° to 2682, then direct AYYUH, cross AYYUH at or above 6000, then on track 079° to MLVIN, then on track 064° to cross GEEZY at or above 12000, then on track 065° to cross JETTG at or below 14000, then on track 065° to GIDGT, thence. . .

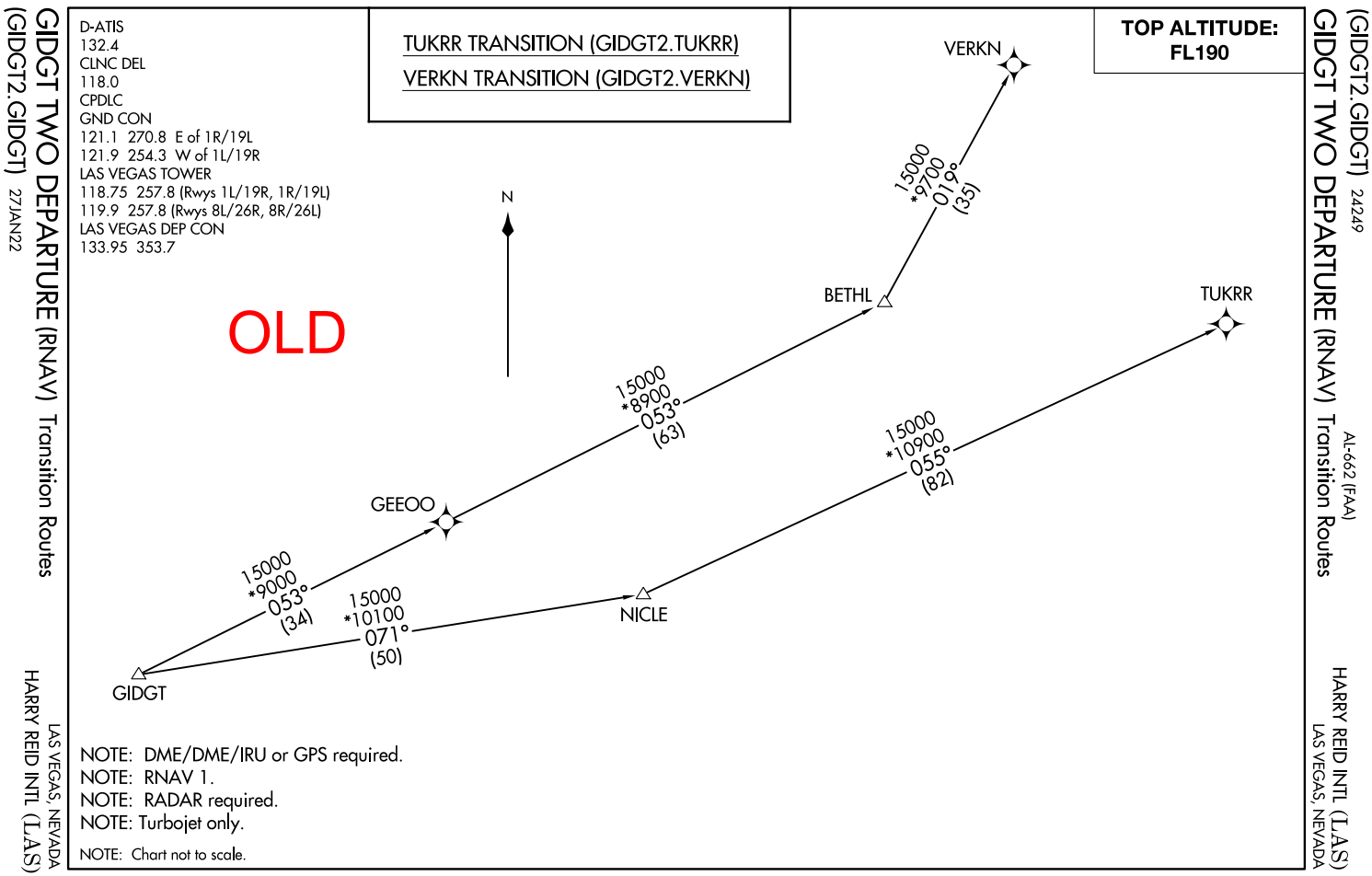
TAKEOFF RUNWAYS 19L/R: Climb on heading 194° to intercept course 271° to cross LEELN at or below 8000, then on track 336° to cross GLIAN at or above 5000 and at or below 230K, then on track 050° to cross BACCK at or above 6000, then on track 058° to cross ALOLY at or above 7000, then on track 079° to cross TTEEA at or above 14000, then on track 079° to GJGDT, thence. . . .

TAKEOFF RUNWAYS 26L/R: Climb on heading 259° to 2682, then direct LEELN to cross LEELN at or below 8000, then on track 336° to cross GLIAN at or above 5000 and at or below 230K, then on track 050° to cross BACCK at or above 6000, then on track 058° to cross ALOLY at or above 7000, then on track 079° to cross TTEEA at or above 14000, then on track 079° to GIDGT, thence. . . .

...on (transition). Maintain FL190. Expect filed altitude 10 minutes after departure.

AL-662 (FAA)
Departure Routes

HARRY REID INTL (LAS)
LAS VEGAS, NEVADA



GIDGT THREE DEPARTURE (RNAV) Departure Routes
(GIDGT3.GIDGT) FIG
LAS VEGAS, NEVADA
HARRY REID INTL (LAS)

D-ATIS
132.4
CLNC DEL
118.0
CPDLC
GND CON
121.1 270.8 E of 1R/19L
121.9 254.3 W of 1L/19R
LAS VEGAS TOWER
118.75 257.8 (Rwys 1L/19R, 1R/19L)
119.9 257.8 (Rwys 8L/26R, 8R/26L)
LAS VEGAS DEP CON
133.95 353.7

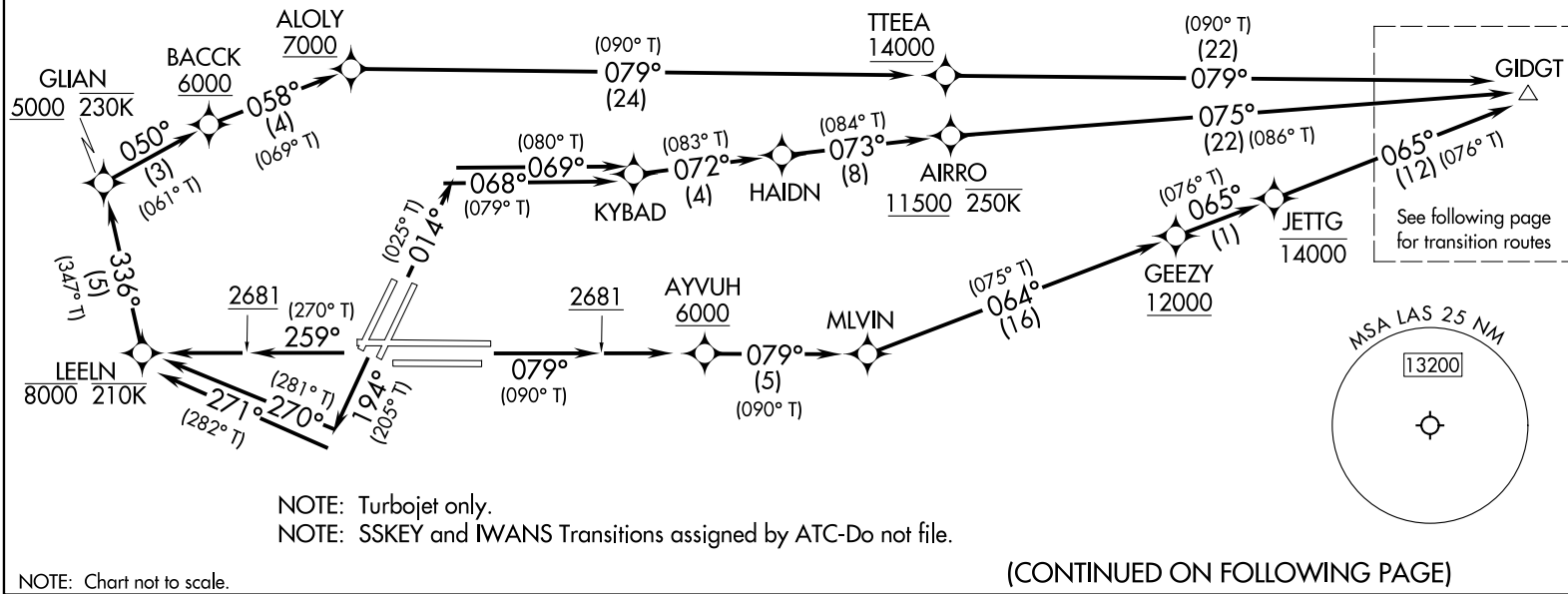
RNAV1 - DME/DME/IRU or GPS.
RADAR required for Non-GPS equipped aircraft

TOP ALTITUDE:
FL190

PROTOTYPE: NOT
FOR NAVIGATION

TAKEOFF MINIMUMS

Rwy 1L: Standard with minimum climb of 500' per NM to 2681, then 286' per NM to 4900.
Rwy 1R: Standard with minimum climb of 500' per NM to 2681, then 295' per NM to 4900.
Rwys 8L/R, 19L/R: Standard with minimum climb of 500' per NM to 2681.
Rwy 26L: Standard with minimum climb of 500' per NM to 2681, then 204' per NM to 4100.
Rwy 26R: Standard with minimum climb of 500' per NM to 2681, then 271' per NM to 4100.



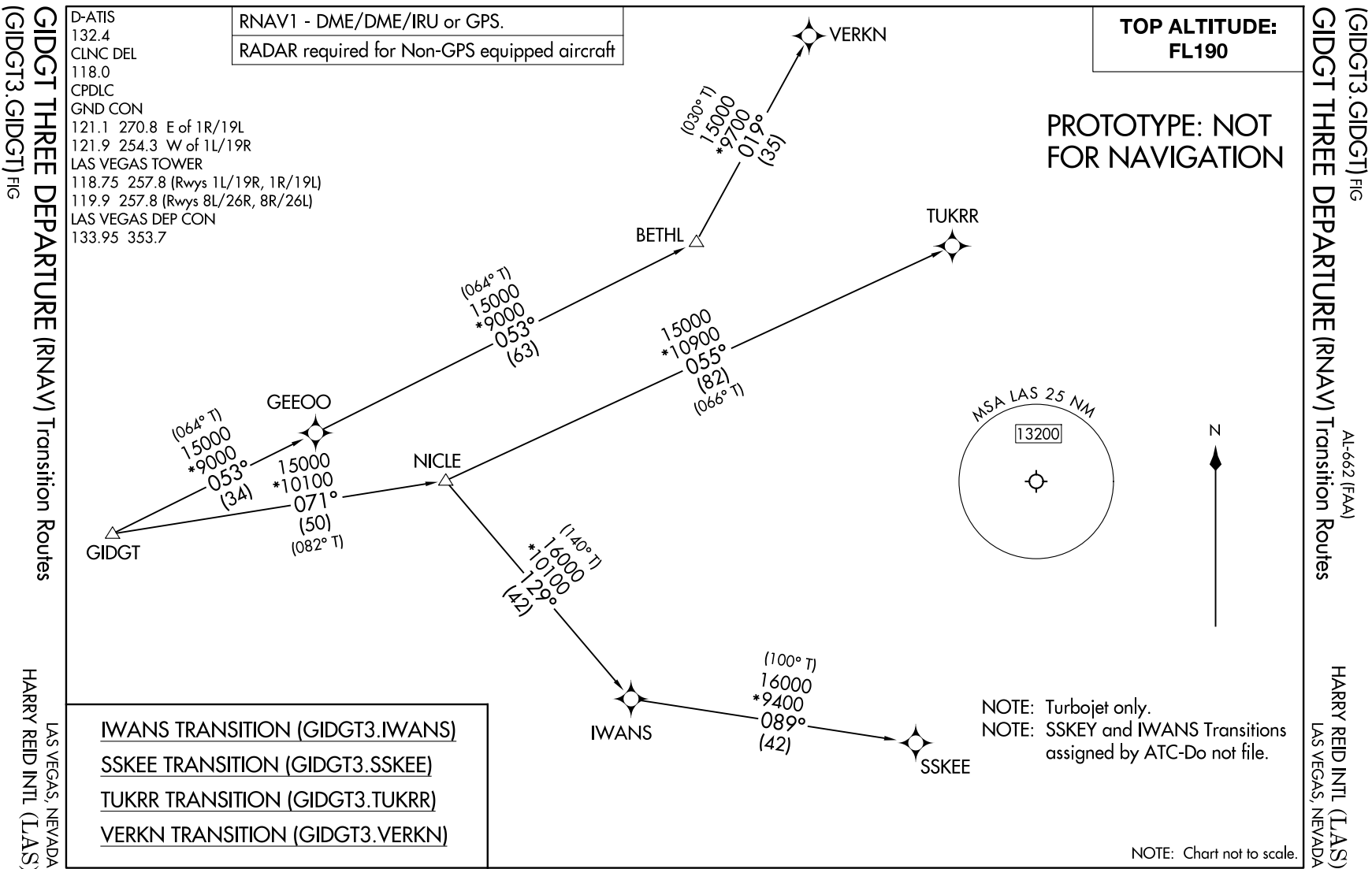
(GIDGT3.GIDGT) FIG
GIDGT THREE DEPARTURE (RNAV) Departure Routes
AL-662 (FAA)
HARRY REID INTL (LAS)
LAS VEGAS, NEVADA

AUTOMATED AL-662 GIDGT DEPARTURE

SW-4
3 FEB 2025
COMPILED: CG
REVIEWER:
DBL CHKR:
EFF: FIG

AUTOMATED AL-662 GIDGT DEPARTURE (CONT)

SW-4
3 FEB 2025
COMPILER: CG
REVIEWER:
DBL CHKR:
EFF: FIG



(GIDGT3.GIDGT) FIG

AL-662 (FAA)

HARRY REID INTL (LAS)
LAS VEGAS, NEVADA

GIDGT THREE DEPARTURE (RNAV)



DEPARTURE ROUTE DESCRIPTION

TAKEOFF RUNWAYS 1L: Climb on heading 014° to intercept course 068° to KYBAD, then on track 072° to HAIDN, then on track 073° to cross AIRRO at or above 11500 and at or below 250K, then on track 075° to GIDGT, thence. . . .

TAKEOFF RUNWAYS 1R: Climb on heading 014° to intercept course 069° to KYBAD, then on track 072° to HAIDN, then on track 073° to cross AIRRO at or above 11500 and at or below 250K, then on track 075° to GIDGT, thence. . . .

TAKEOFF RUNWAYS 8L/R: Climb on heading 079° to 2681, then direct to cross AYWUH at or above 6000, then on track 079° to MLVIN, then on track 064° to cross GEEZY at or above 12000, then on track 065° to cross JETTG at or below 14000, then on track 065° to GIDGT, thence. . . .

TAKEOFF RUNWAYS 19L: Climb on heading 194° to intercept course 271° to cross LEELN at or below 8000, then on track 336° to cross GLIAN at or above 5000 and at or below 230K, then on track 050° to cross BACCK at or above 6000, then on track 058° to cross ALOLY at or above 7000, then on track 079° to cross TTEEA at or above 14000, then on track 079° to GIDGT, thence. . . .

TAKEOFF RUNWAYS 19R: Climb on heading 194° to intercept course 270° to cross LEELN at or below 8000, then on track 336° to cross GLIAN at or above 5000 and at or below 230K, then on track 050° to cross BACCK at or above 6000, then on track 058° to cross ALOLY at or above 7000, then on track 079° to cross TTEEA at or above 14000, then on track 079° to GIDGT, thence. . . .

TAKEOFF RUNWAYS 26L/R: Climb on heading 259° to 2681, then direct to cross LEELN at or below 8000 and at or below 210K, then on track 336° to cross GLIAN at or above 5000 and at or below 230K, then on track 050° to cross BACCK at or above 6000, then on track 058° to cross ALOLY at or above 7000, then on track 079° to cross TTEEA at or above 14000, then on track 079° to GIDGT, thence. . . .

. . . .on (transition). Maintain FL190. Expect filed altitude 10 minutes after departure.

PROTOTYPE: NOT
FOR NAVIGATION

AUTOMATED AL-662 GIDGT DEPARTURE_C2

SW-4

3 FEB 2025

COMPILER: CG

REVIEWER:

DBL CHKR:

EFF: FIG

GIDGT THREE DEPARTURE (RNAV)

(GIDGT3.GIDGT) FIG

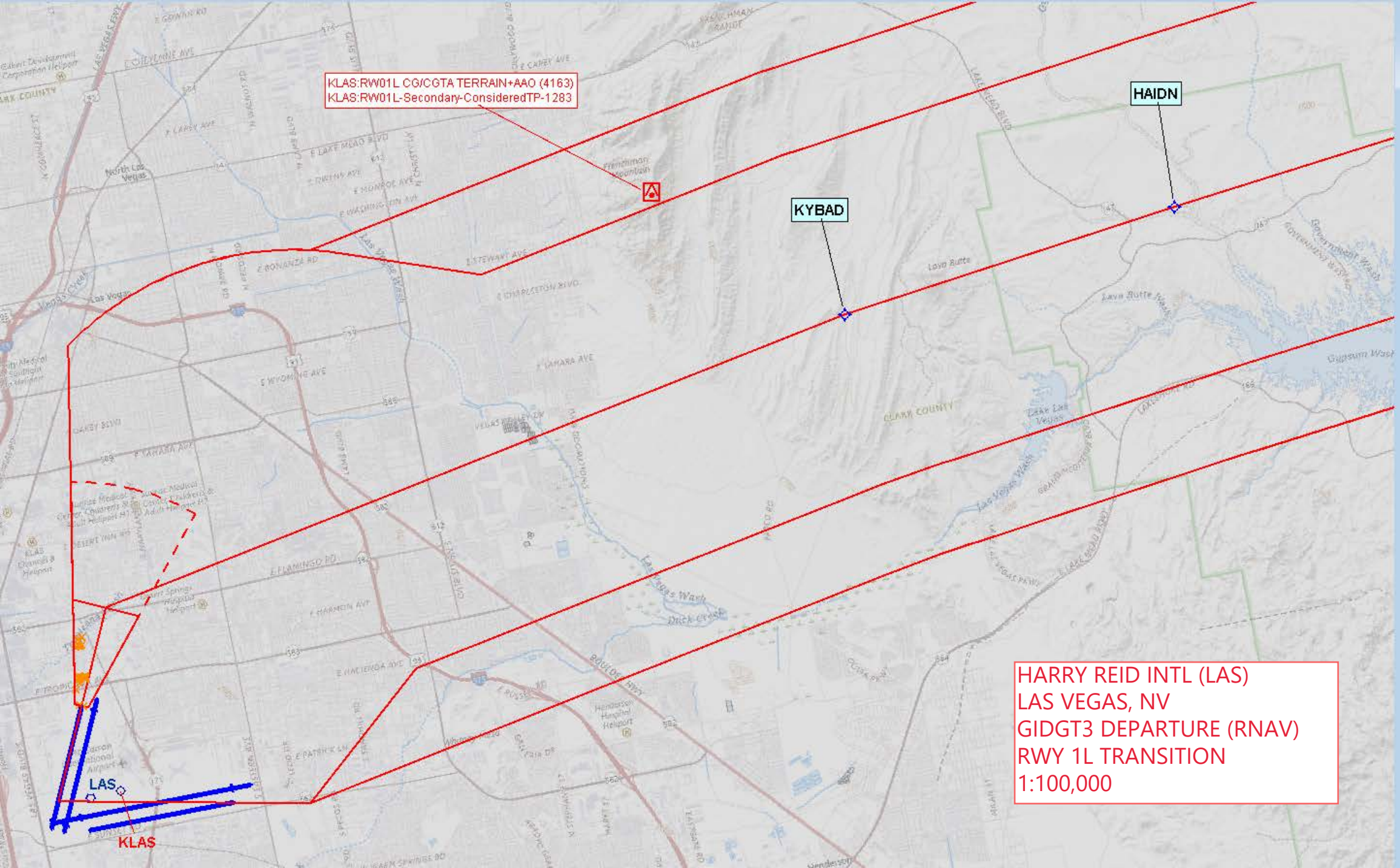
LAS VEGAS, NEVADA
HARRY REID INTL (LAS)

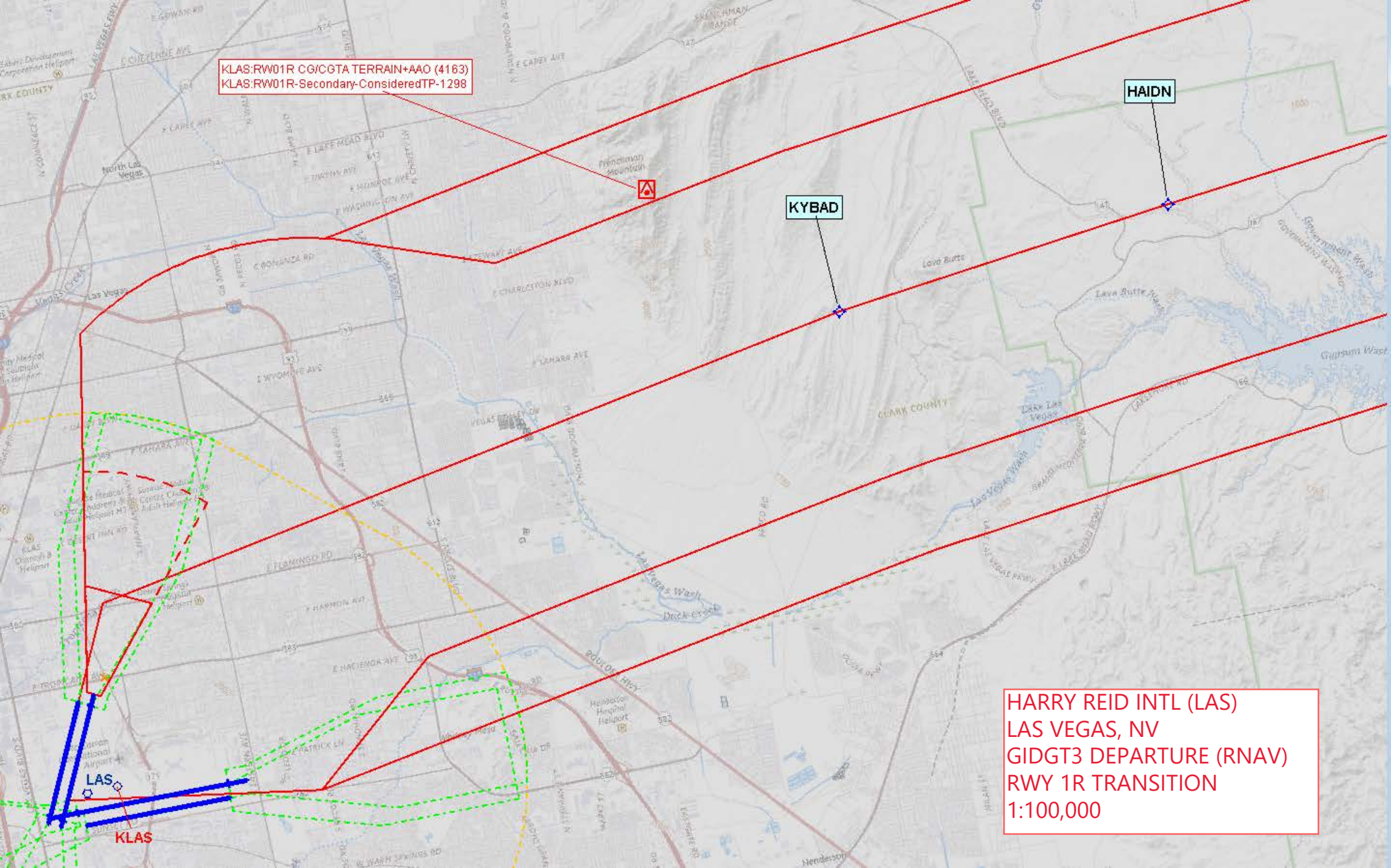
KLAS:RW01L CG/CGTA TERRAIN+AAO (4163)
KLAS:RW01L-Secondary-ConsideredTP-1283

HAIDN

KYBAD

HARRY REID INTL (LAS)
LAS VEGAS, NV
GIDGT3 DEPARTURE (RNAV)
RWY 1L TRANSITION
1:100,000





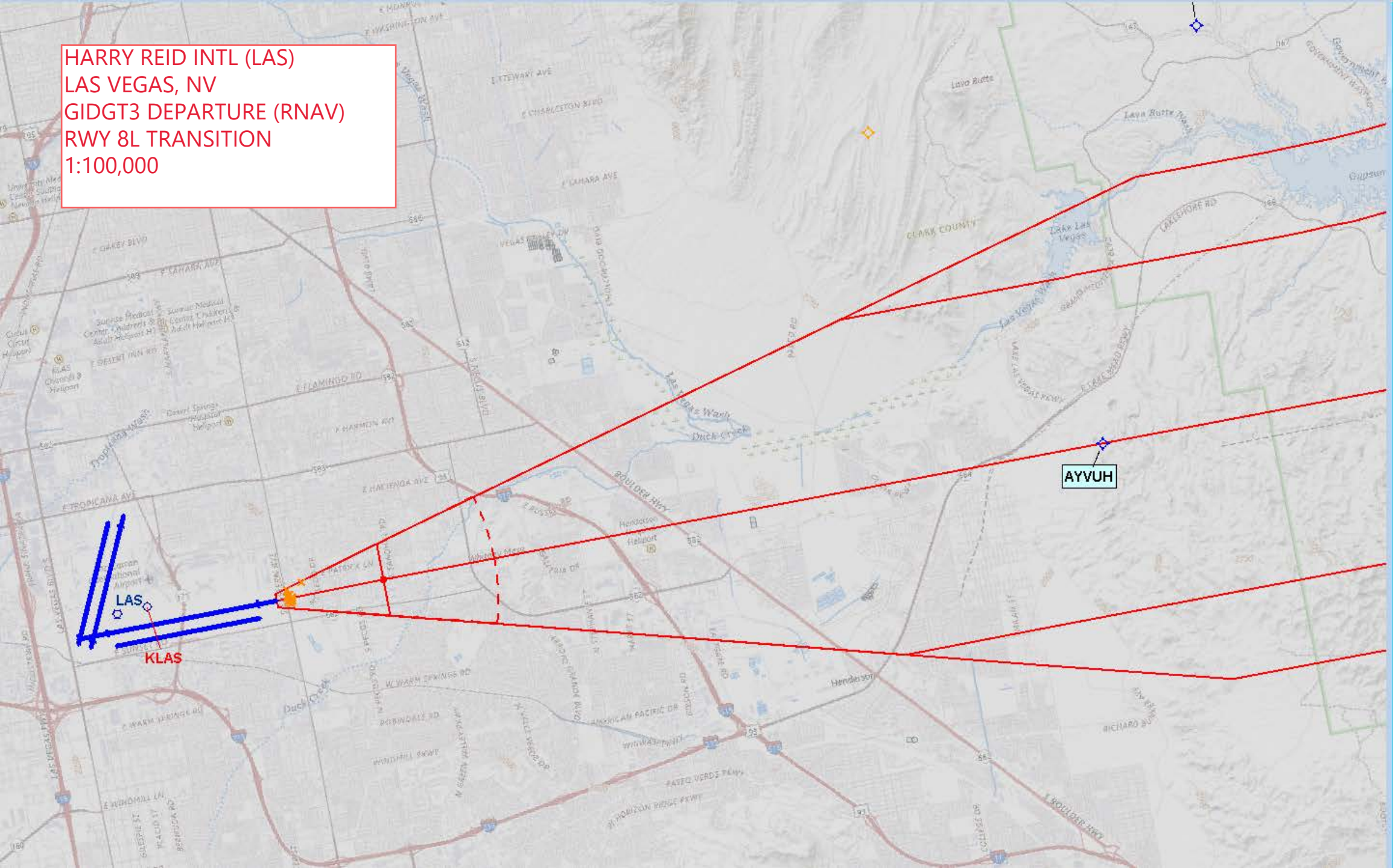
KLAS:RW01R CG/CGTA TERRAIN+AAO (4163)
KLAS:RW01R-Secondary-ConsideredTP-1298

HADN

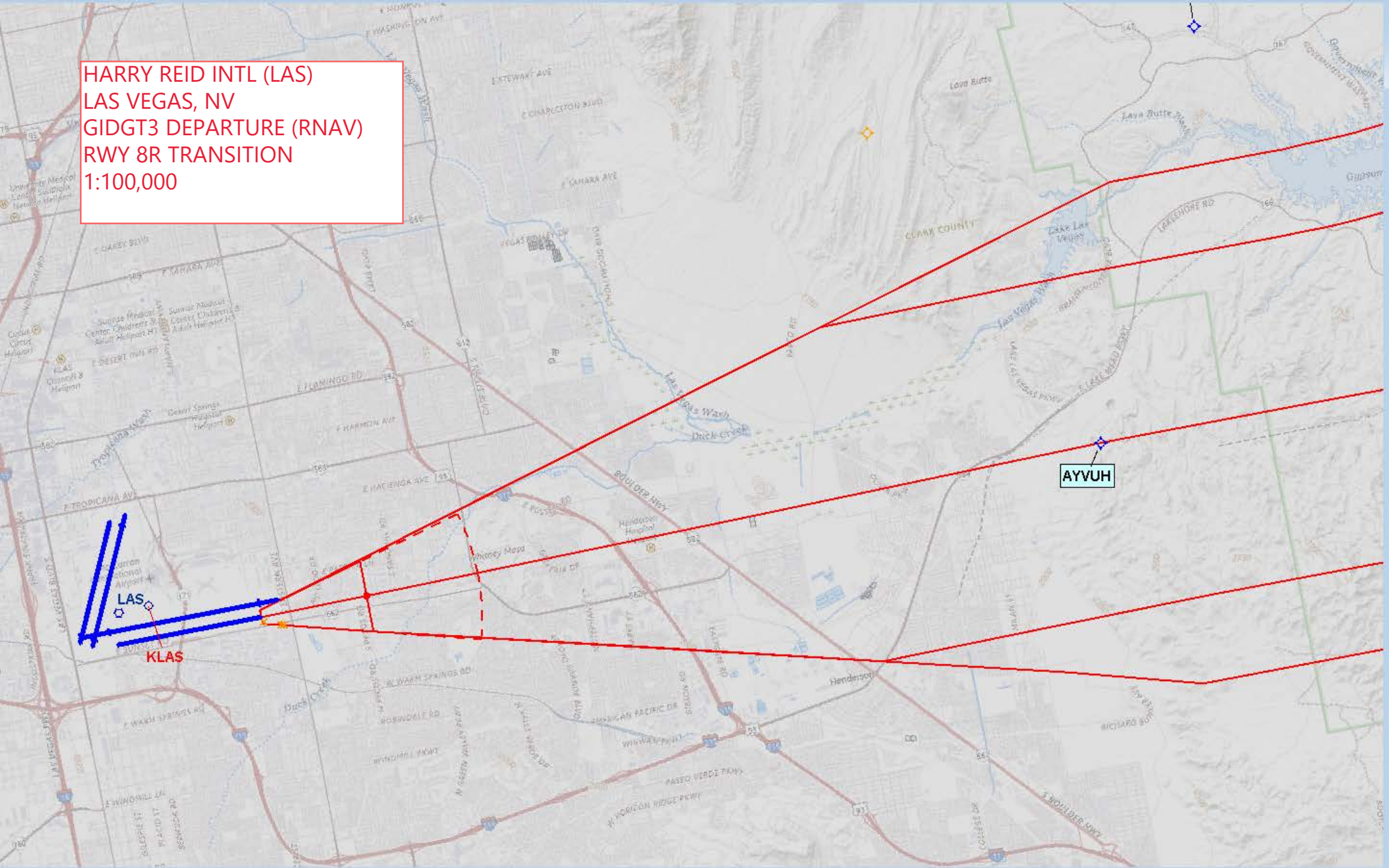
KYBAD

HARRY REID INTL (LAS)
LAS VEGAS, NV
GIDGT3 DEPARTURE (RNAV)
RWY 1R TRANSITION
1:100,000

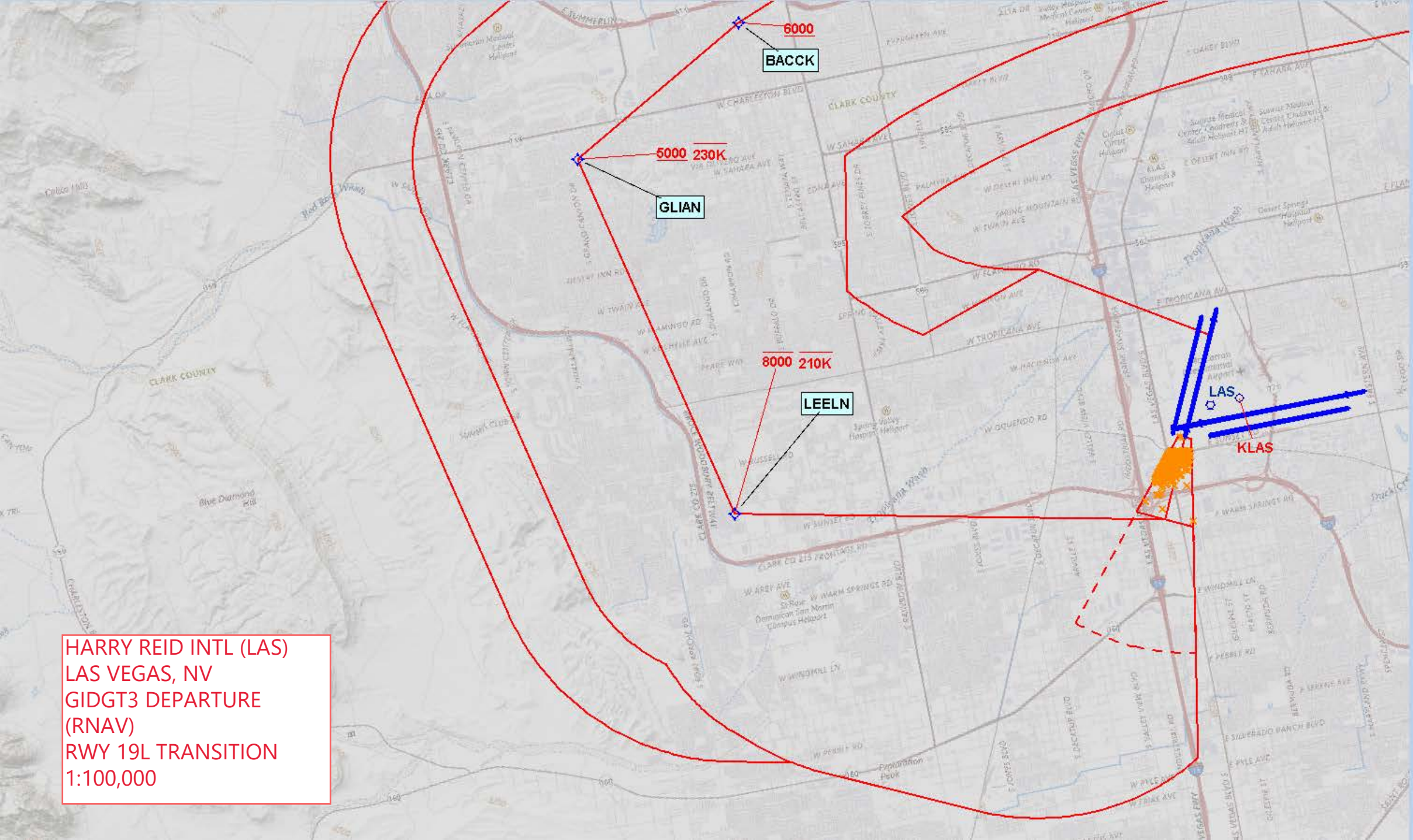
HARRY REID INTL (LAS)
LAS VEGAS, NV
GIDGT3 DEPARTURE (RNAV)
RWY 8L TRANSITION
1:100,000



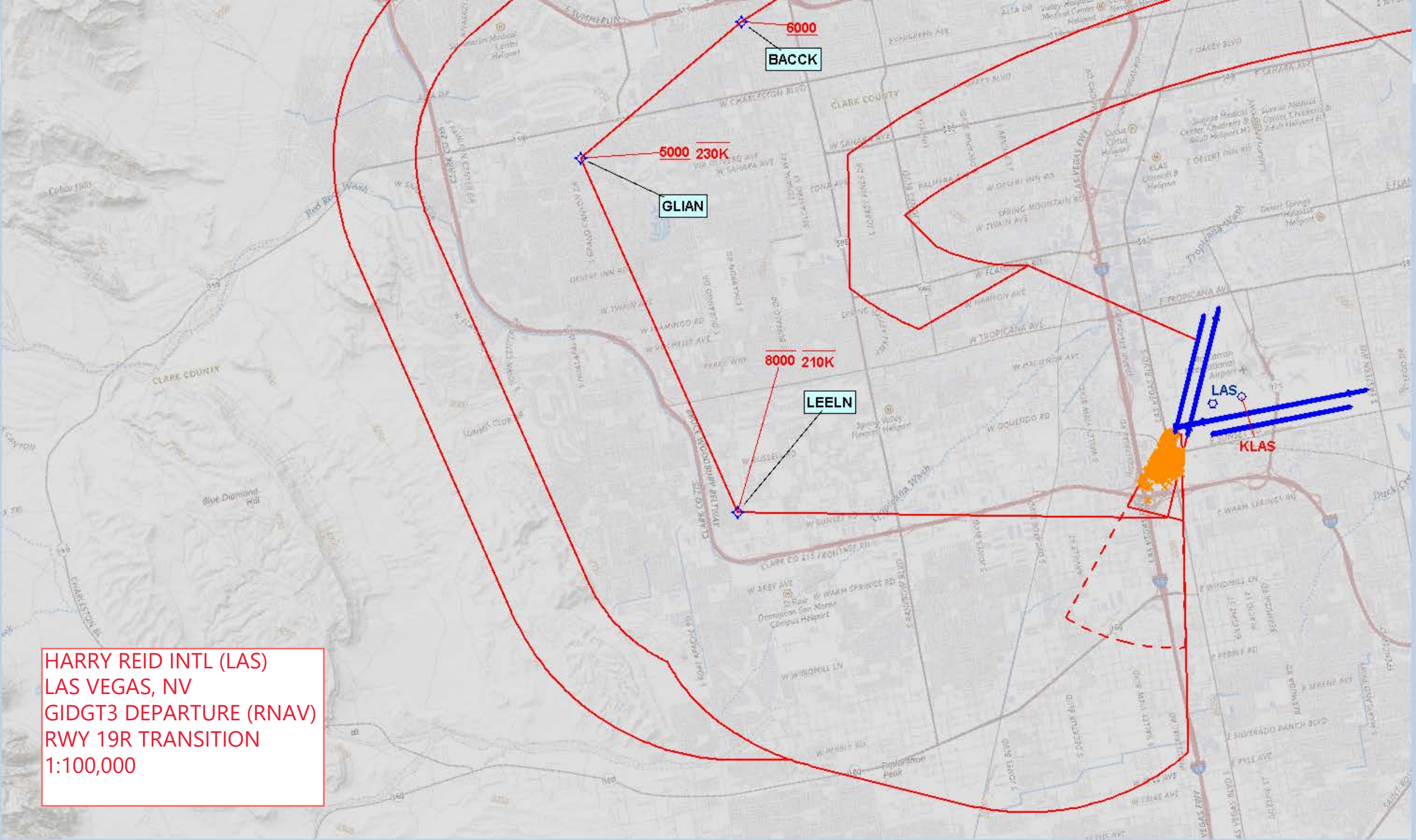
HARRY REID INTL (LAS)
LAS VEGAS, NV
GIDGT3 DEPARTURE (RNAV)
RWY 8R TRANSITION
1:100,000

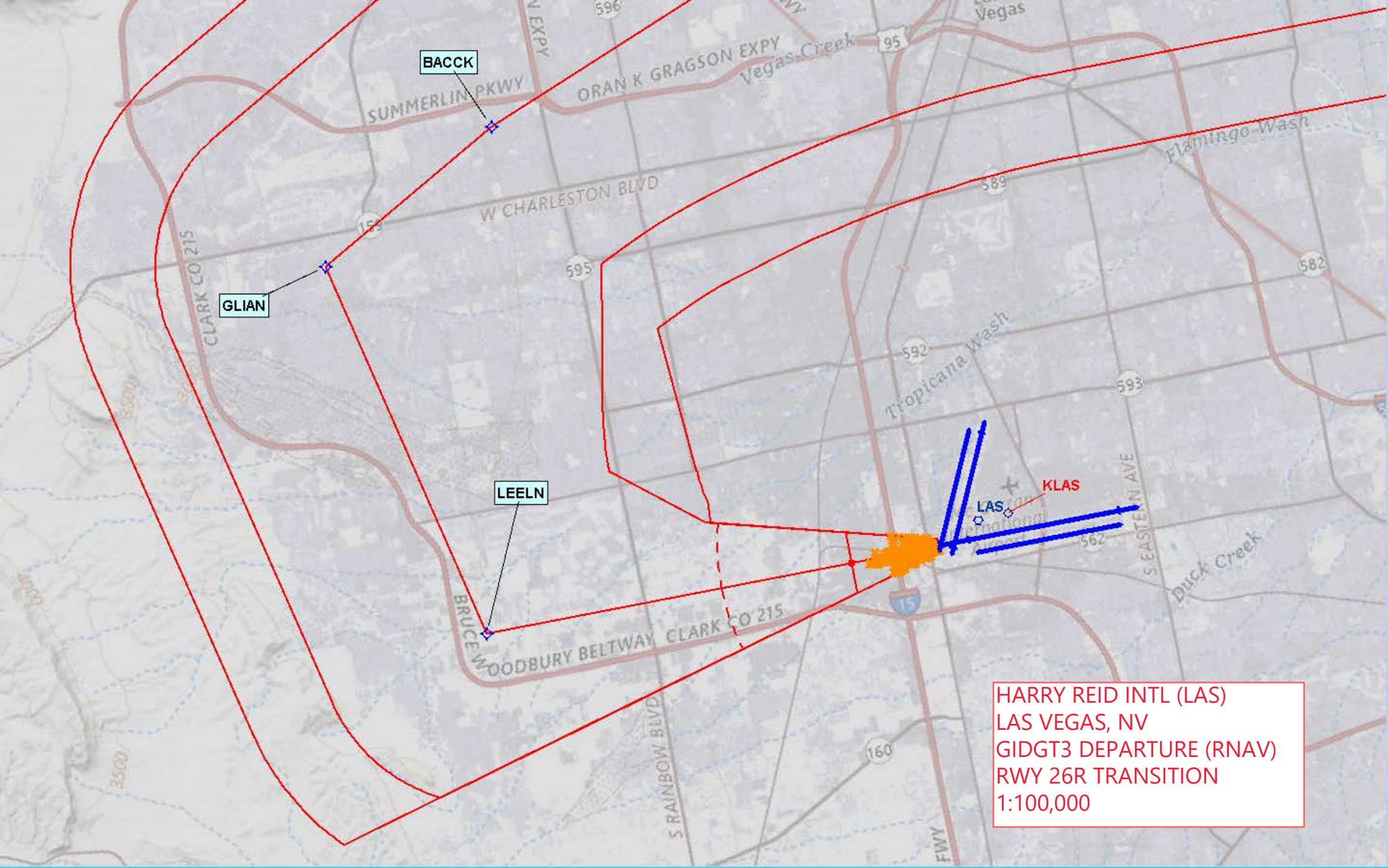


HARRY REID INTL (LAS)
LAS VEGAS, NV
GIDGT3 DEPARTURE
(RNAV)
RWY 19L TRANSITION
1:100,000



HARRY REID INTL (LAS)
LAS VEGAS, NV
GIDGT3 DEPARTURE (RNAV)
RWY 19R TRANSITION
1:100,000

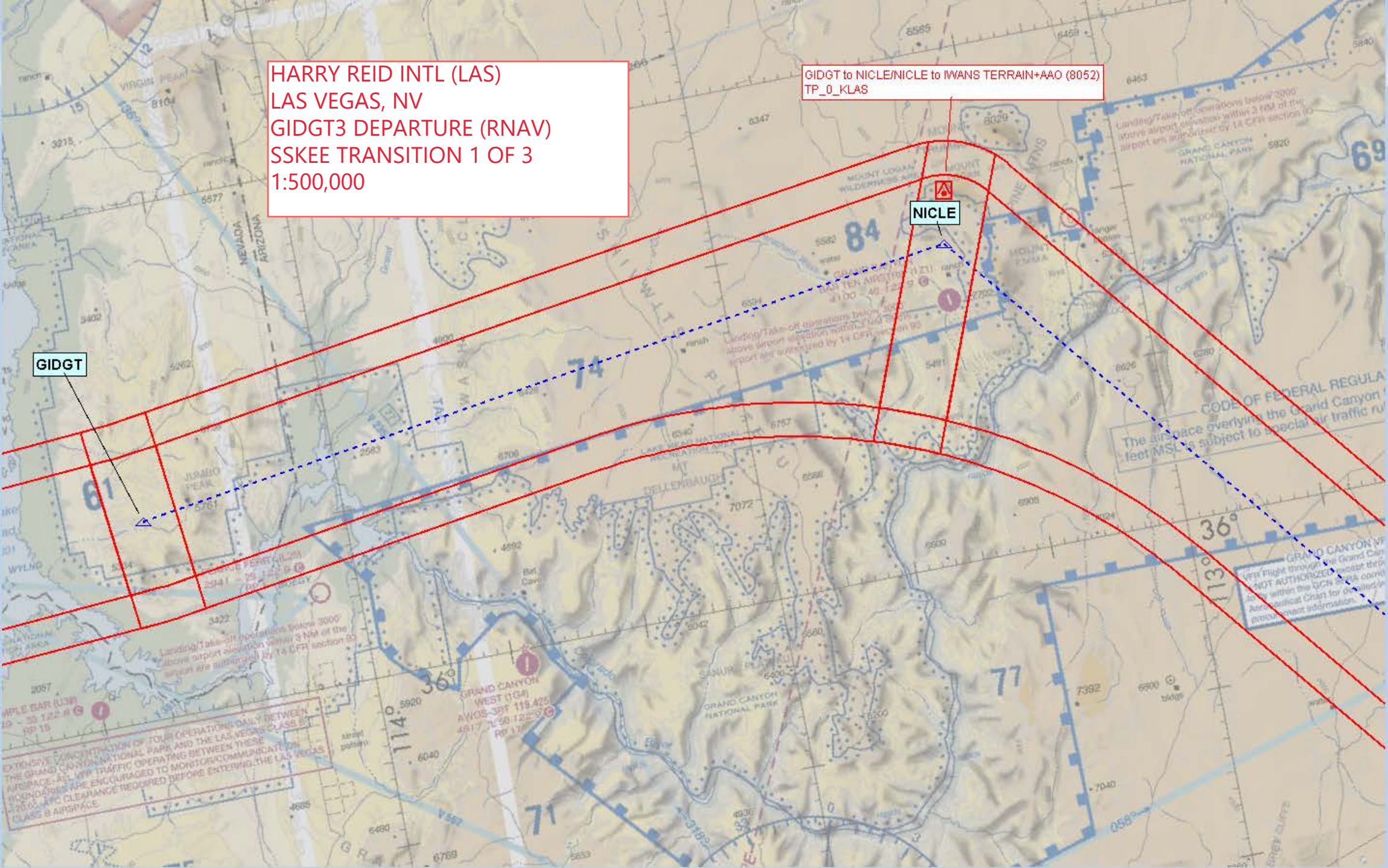




HARRY REID INTL (LAS)
LAS VEGAS, NV
GIDGT3 DEPARTURE (RNAV)
RWY 26R TRANSITION
1:100,000

HARRY REID INTL (LAS)
LAS VEGAS, NV
GIDGT3 DEPARTURE (RNAV)
SSKEE TRANSITION 1 OF 3
1:500,000

GIDGT to NICLE/NICLE to IWANS TERRAIN+AAO (8052)
TP_0_KLAS



GIDGT to NICLE/NICLE to IWANS TERRAIN+AAO (8052)
TP_0_KLAS

HARRY REID INTL (LAS)
LAS VEGAS, NV
GIDGT3 DEPARTURE (RNAV)
SSKEE TRANSITION 2 OF 3
1:500,000

NICLE

IWANS

GRAND CANYON VFR AERONAUTICAL CHART

GCN

TUSAYAN

SSKEE

IWANS

TENTS

HARRY REID INTL (LAS)
LAS VEGAS, NV
GIDGT3 DEPARTURE (RNAV)
SSKEE TRANSITION 3 OF 3
1:500,000

GRAND CANYON VFR AERONAUTICAL CHART
VFR Flight through the Grand Canyon Special Flight Rules Area (GCN SFRA) is NOT AUTHORIZED except through designated corridors. Pilots intending to fly within the GCN SFRA corridors should refer to the Grand Canyon VFR Aeronautical Chart for detailed information. See note in chart border for procurement information.

GCN

TUSAYAN

SSKEE

IWANS

TENTS

HARRY REID INTL (LAS)
LAS VEGAS, NV
GIDGT3 DEPARTURE (RNAV)
SSKEE TRANSITION 3 OF 3
1:500,000

GRAND CANYON VFR AERONAUTICAL CHART

CODE OF FEDERAL REGULATIONS (CFR)

GRAND CANYON NATIONAL PARK below 18,000'

NOT AUTHORIZED except through designated corridors. Pilots intending to fly within the GCN SFRA corridors should refer to the Grand Canyon VFR Aeronautical Chart for detailed information. See note in chart border for procurement information.

GCN

TUSAYAN

VALLE HIGI

SSKEE

HARRY REID INTL (LAS)

GIDGT3 DEPARTURE (RNAV)

SSKEE TRANSITION 3 OF 3

1:500,000

GRAND CANYON VFR AERONAUTICAL CHART

GCN

TUSAYAN

SSKEE

IWANS

TENTS

HARRY REID INTL (LAS)
LAS VEGAS, NV
GIDGT3 DEPARTURE (RNAV)
SSKEE TRANSITION 3 OF 3
1:500,000

**HARRY REID INTL (LAS)
LAS VEGAS, NV
GIDGT3 DEPARTURE (RNAV)
SSKEE TRANSITION 3 OF 3
1:500,000**

GRAND CANYON VFR AERONAUTICAL CHART

GCN

TUSAYAN

SSKEE

IWANS

TENTS

HARRY REID INTL (LAS)
LAS VEGAS, NV
GIDGT3 DEPARTURE (RNAV)
SSKEE TRANSITION 3 OF 3
1:500,000

GRAND CANYON VFR AERONAUTICAL CHART

GCN

TUSAYAN

SSKEE

IWANS

TENTS

HARRY REID INTL (LAS)
LAS VEGAS, NV
GIDGT3 DEPARTURE (RNAV)
SSKEE TRANSITION 3 OF 3
1:500,000

GRAND CANYON VFR AERONAUTICAL CHART

GCN

TUSAYAN

SSKEE

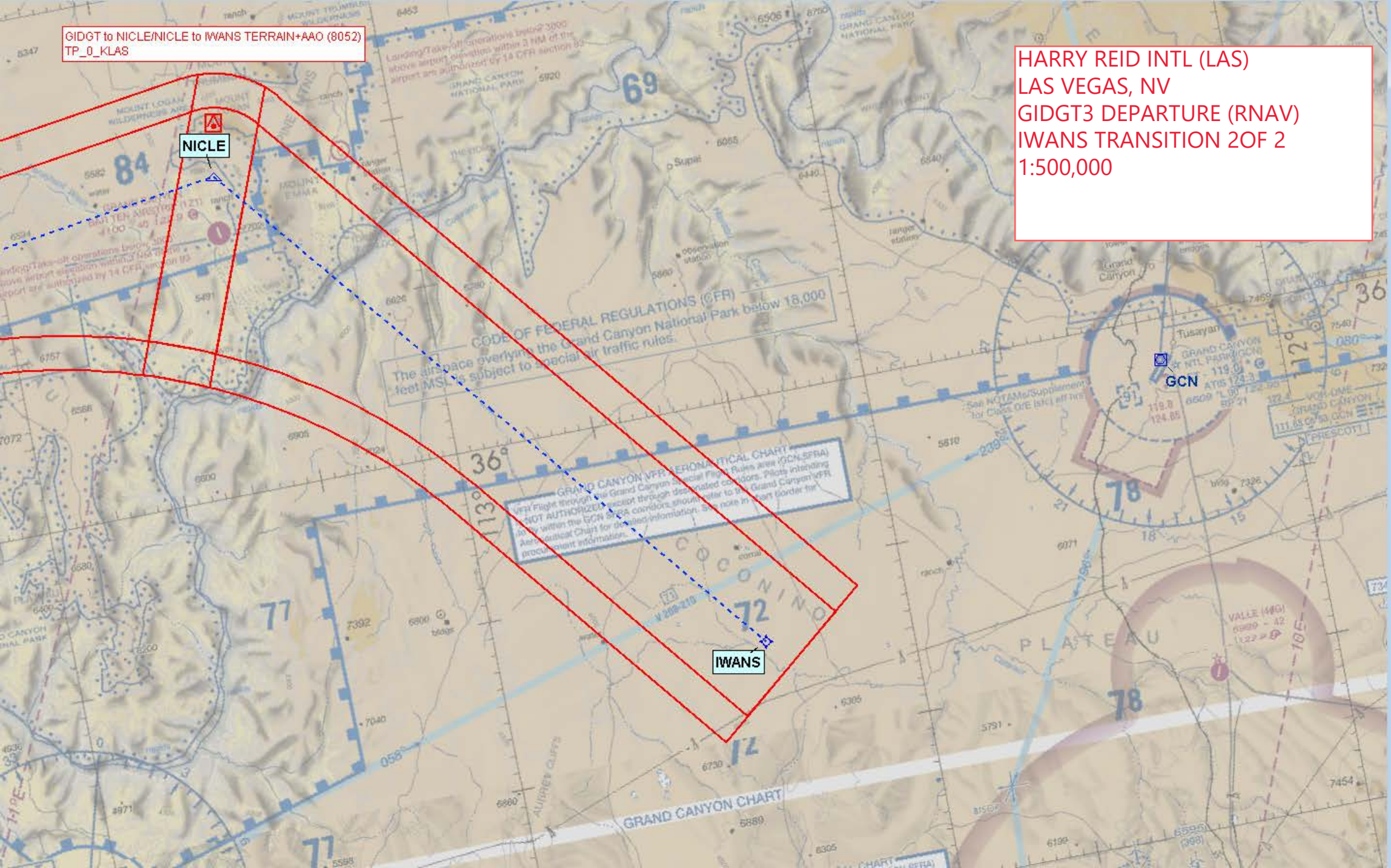
IWANS

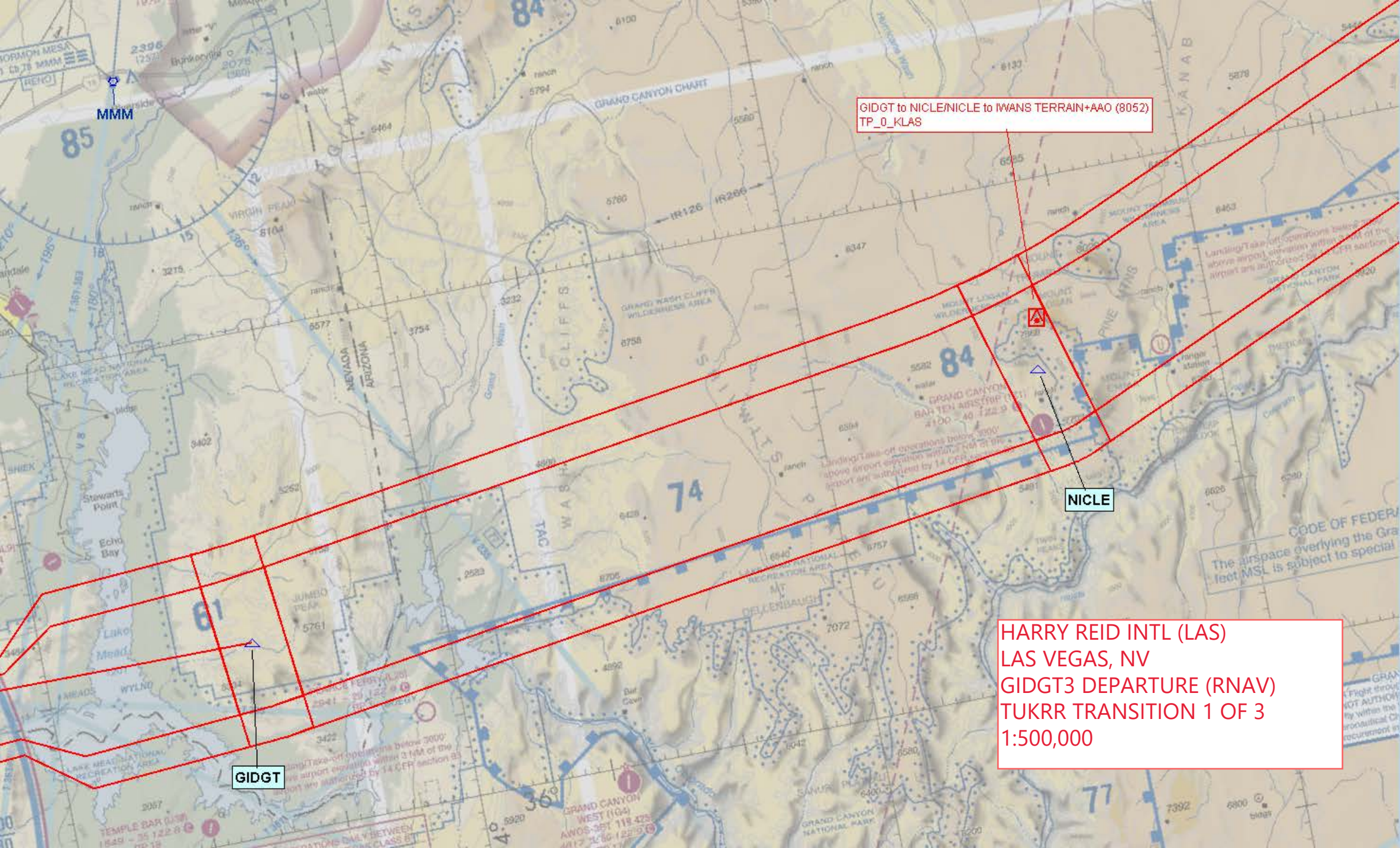
TENTS

HARRY REID INTL (LAS)
LAS VEGAS, NV
GIDGT3 DEPARTURE (RNAV)
SSKEE TRANSITION 3 OF 3
1:500,000

GIDGT to NICLE/NICLE to IWANS TERRAIN+AAO (8052)
TP_0_KLAS

HARRY REID INTL (LAS)
LAS VEGAS, NV
GIDGT3 DEPARTURE (RNAV)
IWANS TRANSITION 2OF 2
1:500,000





GIDGT to NICLE/NICLE to IWANS TERRAIN+AAO (8052)
TP_0_KLAS

NICLE

GIDGT

HARRY REID INTL (LAS)
LAS VEGAS, NV
GIDGT3 DEPARTURE (RNAV)
TUKRR TRANSITION 1 OF 3
1:500,000

HARRY REID INTL (LAS)
LAS VEGAS, NV
GIDGT3 DEPARTURE (RNAV)
TUKRR TRANSITION 2 OF 3
1:500,000

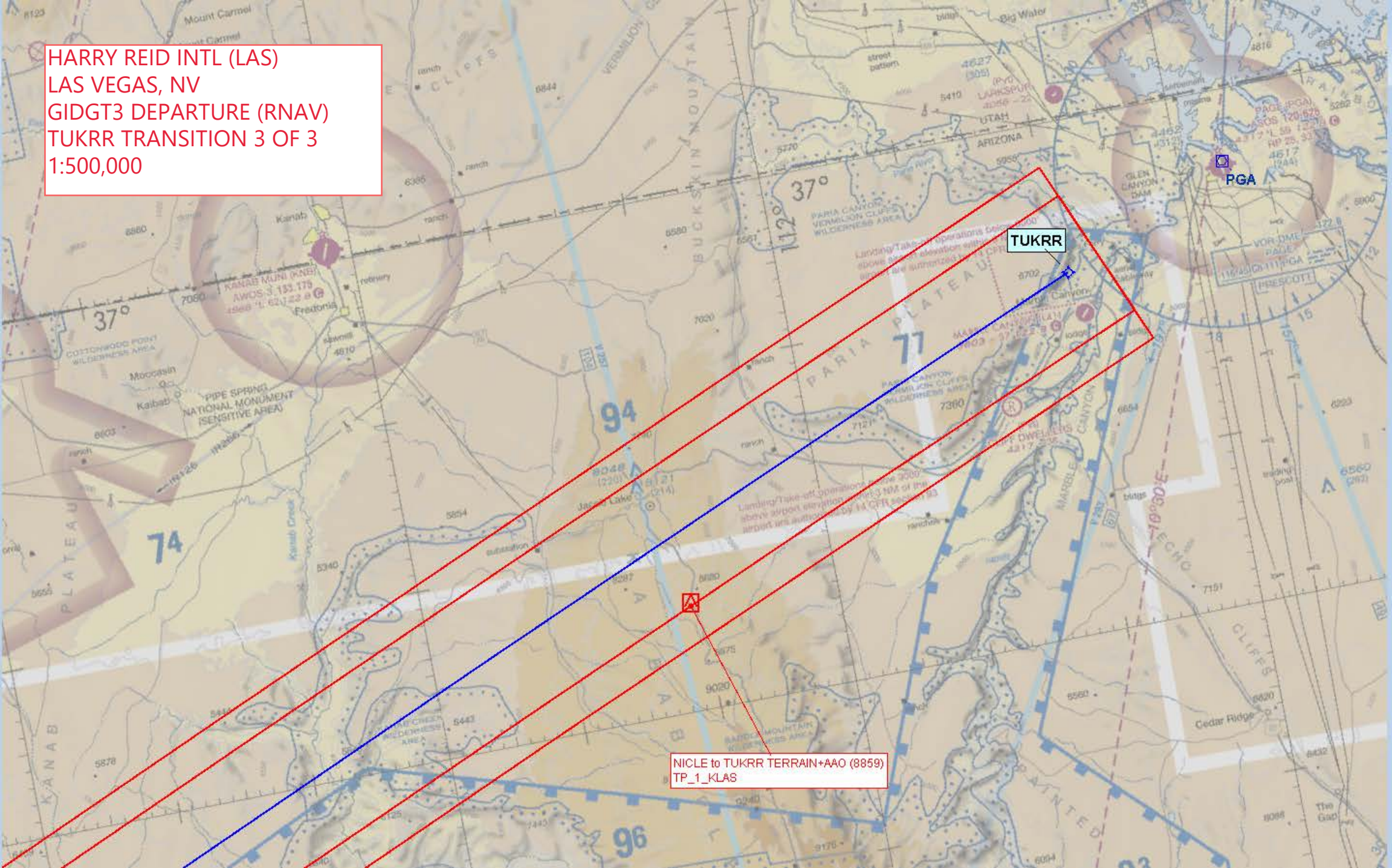
NICLE

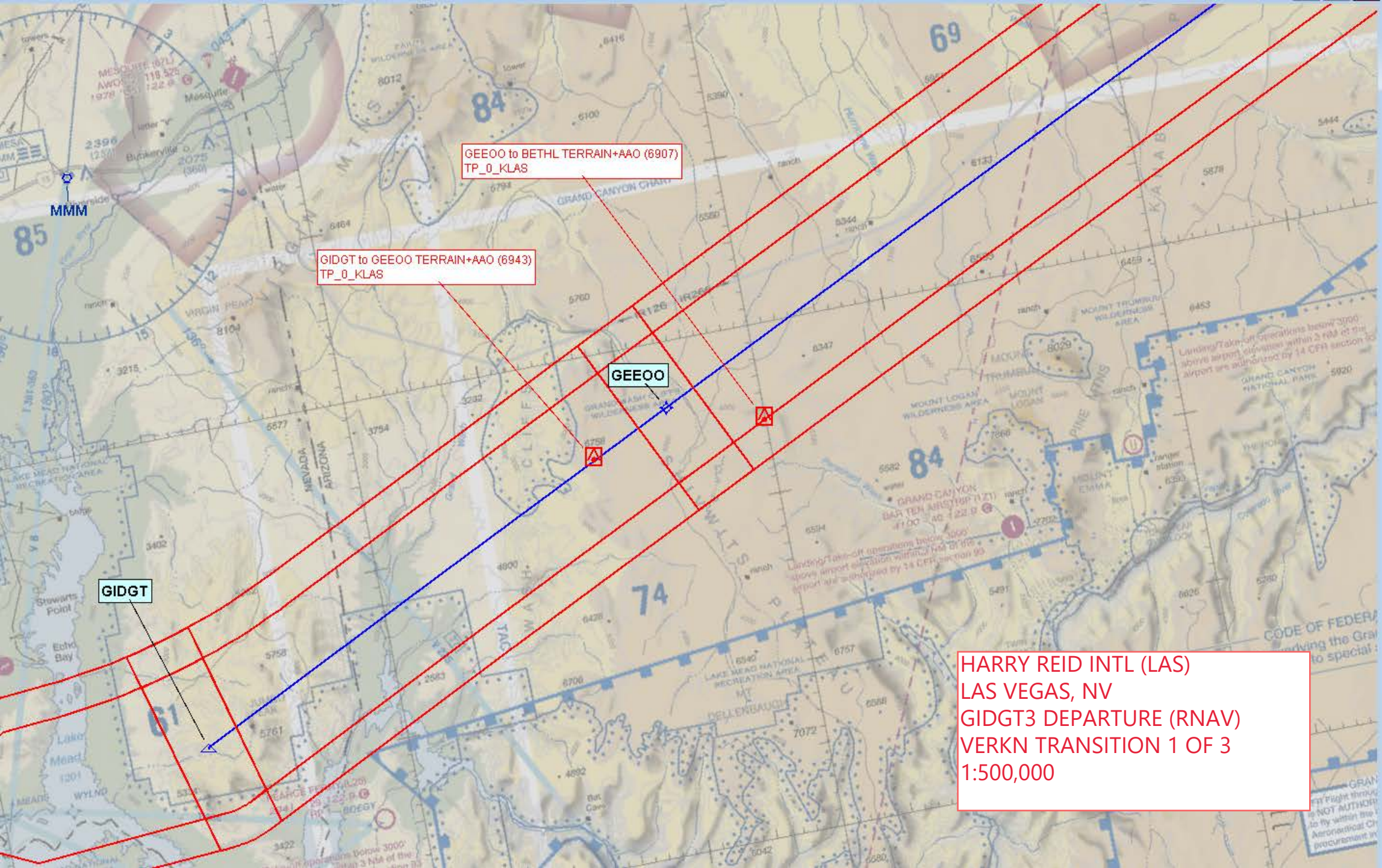
NICLE to TUKRR TERRAIN+AAO (8859)
TP_1_KLAS

CODE OF FEDERAL REGULATIONS (CFR)
The airspace overlying the Grand Canyon National Park below 18,000
feet MSL is subject to special air traffic rules.

GCN

HARRY REID INTL (LAS)
LAS VEGAS, NV
GIDGT3 DEPARTURE (RNAV)
TUKRR TRANSITION 3 OF 3
1:500,000





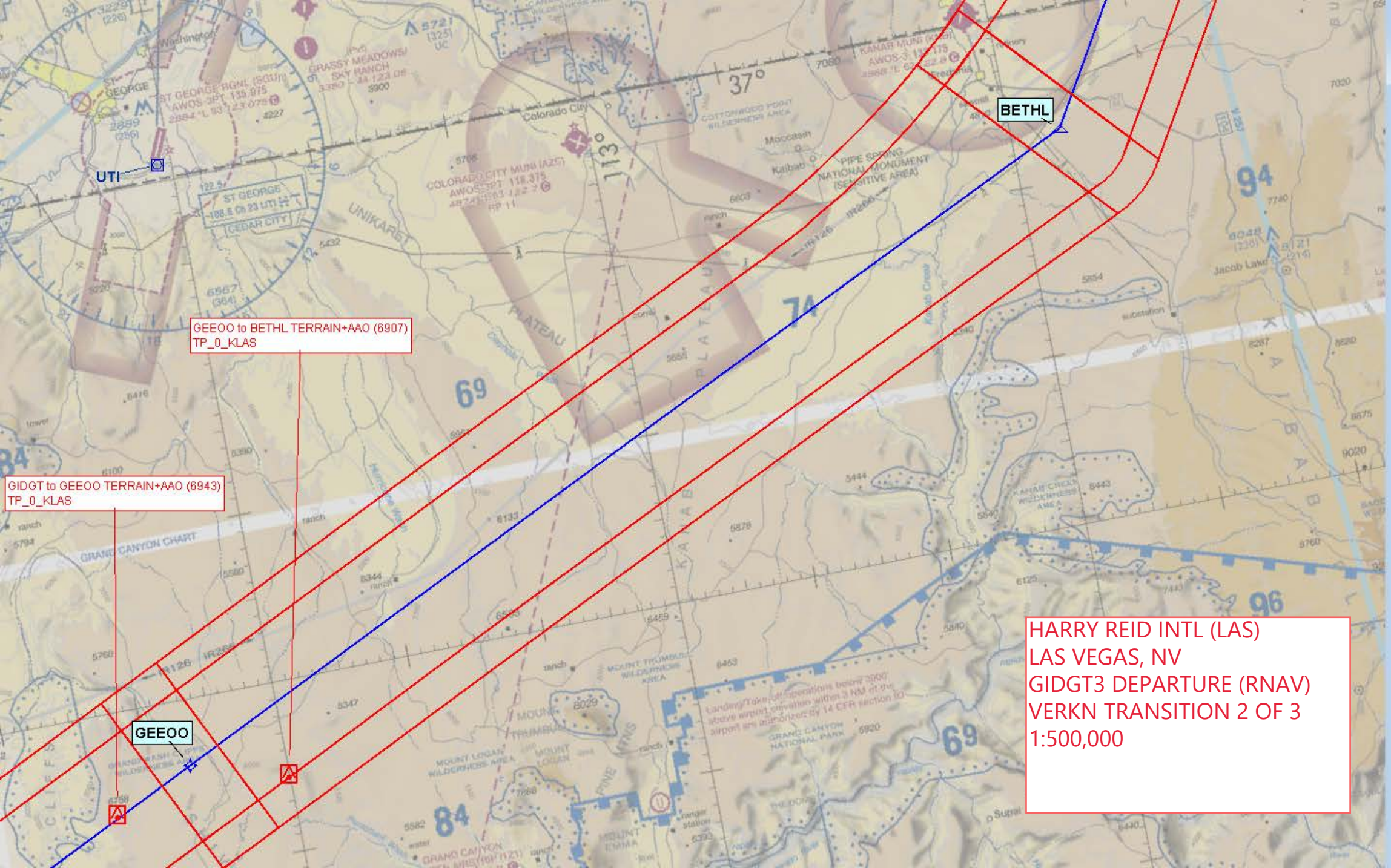
GEE00 to BETHL TERRAIN+AAO (6907)
TP_0_KLAS

GIDGT to GEE00 TERRAIN+AAO (6943)
TP_0_KLAS

GEE00

GIDGT

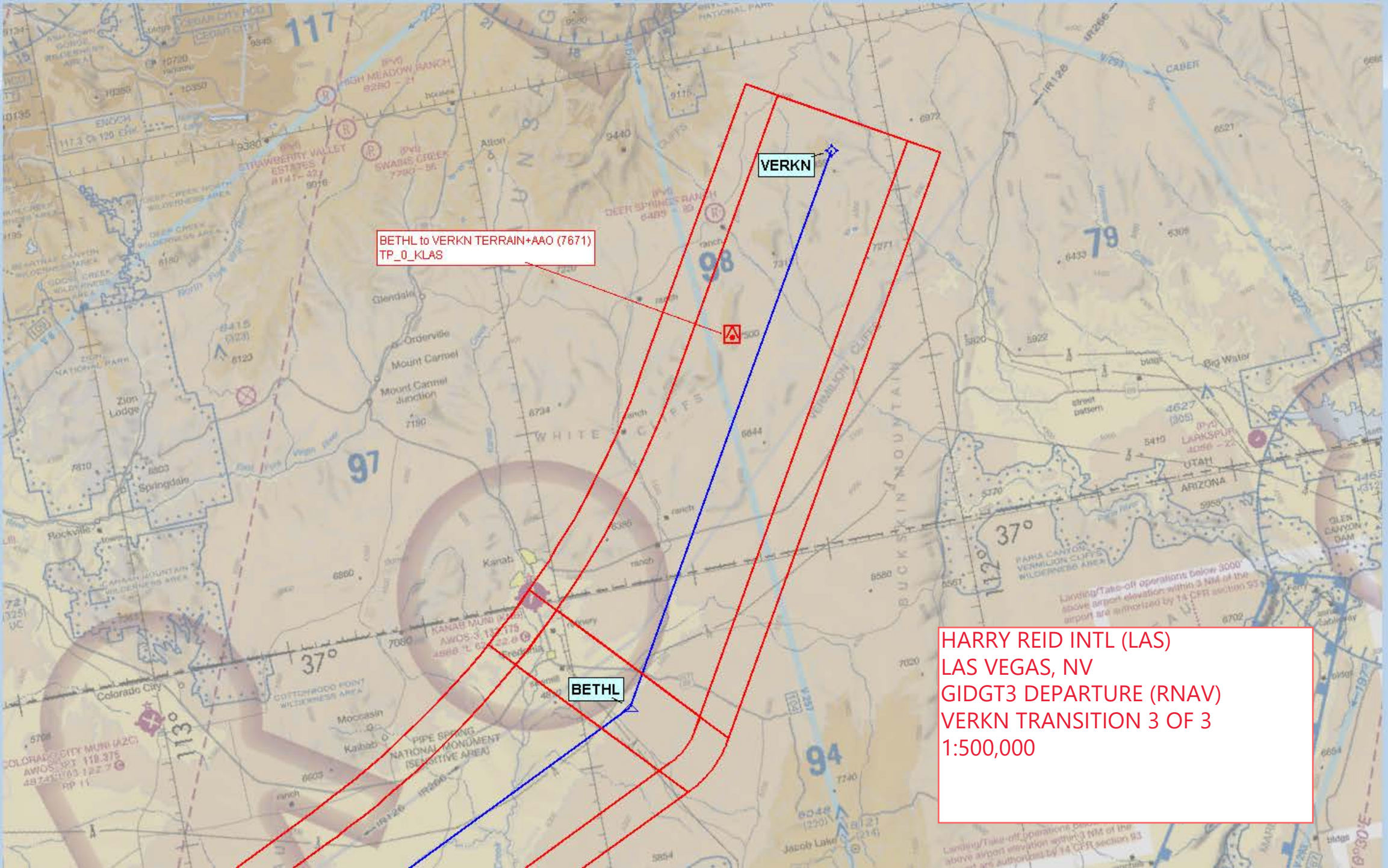
HARRY REID INTL (LAS)
LAS VEGAS, NV
GIDGT3 DEPARTURE (RNAV)
VERKN TRANSITION 1 OF 3
1:500,000



GEE00 to BETHL TERRAIN+AAO (6907)
TP_0_KLAS

GIDGT to GEE00 TERRAIN+AAO (6943)
TP_0_KLAS

HARRY REID INTL (LAS)
LAS VEGAS, NV
GIDGT3 DEPARTURE (RNAV)
VERKN TRANSITION 2 OF 3
1:500,000



BETHL to VERKN TERRAIN+AAO (7671)
TP_0_KLAS

HARRY REID INTL (LAS)
LAS VEGAS, NV
GIDGT3 DEPARTURE (RNAV)
VERKN TRANSITION 3 OF 3
1:500,000