

Flight Procedures Cover Page	Task Action: FLIGHT CHECK	Task Type: IAP	Estimated Chart Date: 08/07/2025	APWS Task ID: 57959B75310543CD8F4951CDFD30A6DB	APWS Project ID: DB1185276AE948F0A750764040A9C4DA
Procedure: VOR RWY 14 AMDT 17C		Enroute: NO	Specialist: Neidigh, Jon		Agreement Number:
Airport ID: KMIE			Airport City: MUNCIE		State: IN
Facility ID:	Facility Type:	Flight Inspection Remark Type: New FC Slot			
<div>Procedure Comments:</div> <div>PROCESSED IAW TECHNICAL SUPPORT GROUP (AJF-17) MEMO DATED 07/07/2021 GUIDANCE FOR PROCEDURAL CHANGES REQUIRING FLIGHT INSPECTION/VALIDATION</div> <div>CLEARs FDC NOTAM 3/1565</div> <div>ACTIVE AIRPORT DATA USED.</div> <div>CONTACT CASIMIR TABAKA 405-954-7931</div> <div>THIS IS A CORRECTED COPY OF THE FORM APPROVED ON 04/16/2025</div> <div>ADDED "*" TO LINE 4 BOHUW/MIE 2.90 DME 1480*</div> <div><div>QUALITY 41 CHECKED</div><div>QUALITY 10 CHECKED</div></div>					

OLD

MUNCIE, INDIANA

AL-5011 (FAA)

23166

VOR/DME MIE	APP CRS	Rwy Idg	6500
114.4	143°	TDZE	933
Chan 91		Apt Elev	937

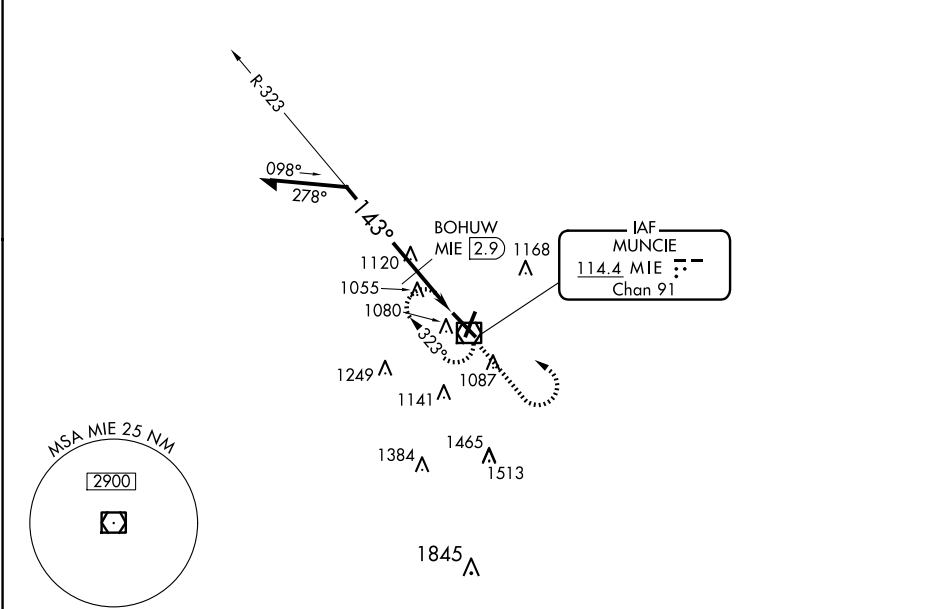
VOR RWY 14

DELAWARE COUNTY RGNL (MIE)

When local altimeter setting not received, use Fort Wayne Intl altimeter setting and increase all MDAs 140 feet; increase S-14 Cat C visibility $\frac{1}{2}$ SM, Cat D $\frac{1}{4}$ SM; increase Circling Cat C/D visibility $\frac{1}{2}$ SM. BOHUW fix minimums: increase S-14 Cat C visibility $\frac{1}{2}$ SM, Cat D $\frac{1}{4}$ SM and Circling Cat C/D visibility $\frac{1}{2}$ SM. VDP NA with Fort Wayne altimeter setting.

MISSED APPROACH: Climb to 2600 then left turn direct MIE VOR/DME and hold.

ATIS 133.25	INDIANAPOLIS APP CON 120.65 317.8	MUNCIE TOWER ★ 120.1 (CTAF) 0	GND CON 121.9	UNICOM 122.95
----------------	--------------------------------------	----------------------------------	------------------	------------------



ELEV 937		D	TDZE 933
MIE VOR/DME 2600		MIE	
Remain within 10 NM		*1620 when using Fort Wayne Intl altimeter setting.	
BOHUW MIE 2.9		MIE 2.1	
2500		*1480	
0.8		1.3	
A		B	
CATEGORY	A	B	D
S-14	1480-1	547 (600-1)	1480-1 $\frac{1}{2}$ 547 (600-1 $\frac{1}{2}$)
CIRCLING	1480-1	543 (600-1)	1480-1 $\frac{1}{2}$ 543 (600-1 $\frac{1}{2}$)
BOHUW FIX MINIMUMS			
S-14	1380-1	447 (500-1)	1380-1 $\frac{1}{4}$ 447 (500-1 $\frac{1}{4}$)
CIRCLING	1460-1	523 (600-1)	1480-1 $\frac{1}{2}$ 543 (600-1 $\frac{1}{2}$)
HIRL Rwy 14-32 0		MIRL Rwy 3-21 0	
REIL Rwys 3, 14 and 21 0			

MUNCIE, INDIANA
Amdt 17B 18JUN20

40°15'N-85°24'W

DELAWARE COUNTY RGNL (MIE)
VOR RWY 14

EC-2, 20 FEB 2025 to 20 MAR 2025

EC-2, 20 FEB 2025 to 20 MAR 2025