

Flight Procedures Cover Page	Task Action: P-NOTAM	Task Type: IAP	Estimated Chart Date: 05/19/2022	APWS Task ID: 57548223BFA74F88A399F809D7DF3150	APWS Project ID: EABBA2269FA3408EAA796858FDB0E240
Procedure: RNAV (GPS) RWY 23 AMDT 0D		Enroute: NO	Specialist: Johnson, Raymond		Agreement Number:
Airport ID: KADG			Airport City: ADRIAN		State: MI
Facility ID:	Facility Type:	Flight Inspection Remark Type:			
<p>Procedure Comments: P-NOTAM</p> <p>CANCELS NOTAM !FDC 2/8400</p> <p>PROCEDURE COMPLETED USING PENDING DATA.</p> <p>CHANGED MSA FROM RW05 2600 TO RW05 2800 - WINDMILL (26-133182) 415611.31N/0842657.75W 1741 AMSL</p> <p>ADDED CHART NOTE: CIRCLING NA TO RWYS 11 AND 29.</p> <p>Processed IAW Technical Support Group (AJF-17) Memo dated 07/07/2021, Subject: Guidance for Procedural Changes Requiring Flight Inspection/Validation</p> <p>CONTACT JASON KRETSCHMER (405) 954-4019.</p>					

03/17/2022

QUALITY
14
CHECKED

QUALITY
41
CHECKED

APP CRS
233°

Rwy Idg
TDZE
798

Apt Elev
802

INFORMATION ONLY

RNAV (GPS) RWY 23

LENAWEE COUNTY (ADG)

RNP APCH - GPS.

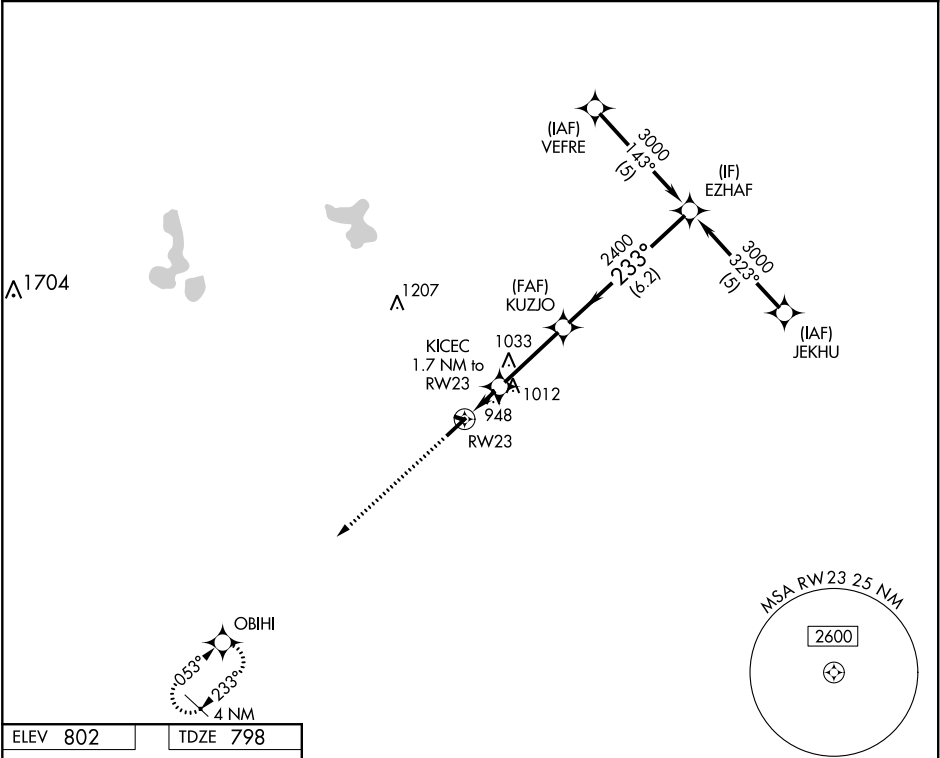
▼

⚠

Rwy 23 helicopter visibility reduction below ¾ SM NA. When local altimeter setting not received, use Ann Arbor Muni altimeter setting: increase all MDA 80 feet and visibility LNAV Cats C/D and Circling Cats C/D ¼ SM.

MISSED APPROACH: Climb to 3000 direct OBIHI and hold.

ASOS 118.375	TOLEDO APP CON 134.35 317.55	UNICOM 122.8 (CTAF) 0
-----------------	---------------------------------	--------------------------



ELEV 802

TDZE 798

3000

OBIHI

VGSI and descent angles not coincident (VGSI Angle 3.00/TCH 32).

1779 X 150

5001 X 100

0.3% UP

233° to RW23

HIRL Rwy 5-23

REIL Rwy 5

KUZJO

233°

3000

KICEC

1.7 NM to RW23

2400

RW23

1380

3.04° TCH 45

1.7 NM

3.1 NM

6.2 NM

CATEGORY	A	B	C	D
LNAV MDA	1260-1	462 (500-1)	1260-1⅓ 462 (500-1⅓)	1260-1½ 462 (500-1½)
CIRCLING	1300-1 498 (500-1)	1320-1 518 (600-1)	1340-1½ 538 (600-1½)	1440-2 638 (700-2)

EC-1, 24 FEB 2022 to 24 MAR 2022

EC-1, 24 FEB 2022 to 24 MAR 2022