

Flight Procedures Cover Page	Task Action: Abbreviated Amendment	Task Type: IAP	Estimated Chart Date: 10/05/2023	APWS Task ID: 56BBB1948F104DFB9265E655DA12195A	APWS Project ID: AAA85A4455CE410D91EBE75FE0D4CBDC
Procedure: RNAV (GPS) RWY 19 AMDT 0B		Enroute: NO	Specialist: Jones, David		Agreement Number:
Airport ID: PAWN			Airport City: NOATAK		State: AK
Facility ID:	Facility Type:	Flight Inspection Remark Type:			
<div>Procedure Comments: Processed IAW technical support group (AJF-17) memo dated 07/07/2021 guidance for procedural changes requiring flight inspection validation. Cancels FDC 3/5107. Contact John Bordy, AJV-A33, 405-954-0980</div>					

QUALITY
20
CHECKED

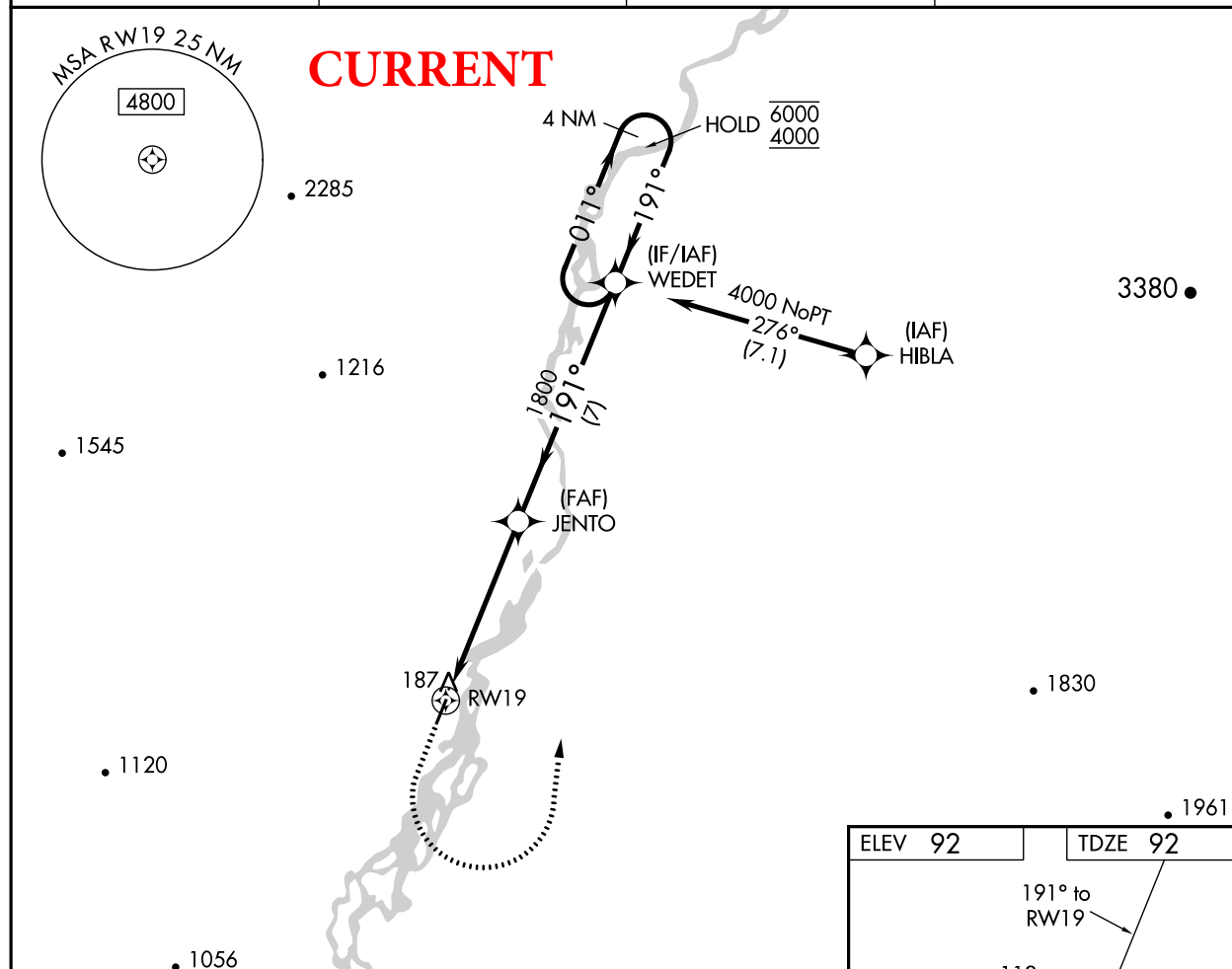
QUALITY
41
CHECKED

WAAS CH 86842 W19A	APP CRS 191°	Rwy Idg 3992 TDZE 92 Apt Elev 92
--	------------------------	---

RNAV (GPS) RWY 19

NOATAK (WTK)(PAWN)

RNP APCH.		MISSED APPROACH: Climb to 1700 then climbing left turn to 4000 direct WEDET and hold.	
▼ Straight-in minimums NA at night. ▲ Rwy 19 helicopter visibility reduction below 1 SM NA.			
AWOS-3P 135.75	ANCHORAGE CENTER 119.2 263.0	KOTZEBUE RADIO 122.4	UNICOM 122.8 (CTAF) 0



1700		4000	WEDET	WEDET		4 NM Holding Pattern
RWY 19		3.00° TCH 40	1800	191°	011°	6000/4000
5.2 NM		7 NM				
CATEGORY	A	B	C	D		
LP MDA	540-1	448 (500-1)	540-1 $\frac{3}{8}$	448 (500-1 $\frac{3}{8}$)		
LNAV MDA	560-1	468 (500-1)	560-1 $\frac{3}{8}$	468 (500-1 $\frac{3}{8}$)		
① CIRCLING	560-1	468 (500-1)	560-1 $\frac{1}{2}$ 468 (500-1 $\frac{1}{2}$)	820-2 $\frac{1}{4}$ 728 (800-2 $\frac{1}{4}$)		

