

Flight Procedures Cover Page	Task Action: FLIGHT CHECK	Task Type: IAP	Estimated Chart Date: 07/15/2021	APWS Task ID: 569A4155BD3E4C82BCED08E7EA871D33	APWS Project ID: C61A3A1E5FB64FC3AD10FEF2E655B886
Procedure: VOR/DME-A AMDT 9C		Enroute: NO	Specialist: Lafferty, James		Agreement Number:
Airport ID: KBQP			Airport City: BASTROP		State: LA
Facility ID:	Facility Type:	Flight Inspection Remark Type: New FC Slot			
<p>Procedure Comments:</p> <p>P-NOTAM</p> <p>This Cancels FDC 0/3039</p> <p>Order 8260.3, chapter 2, New Circling Criteria Applied</p> <p>Contact Dave Teffeteller at 202-267-5177</p>					



BASTROP, LOUISIANA

OLD

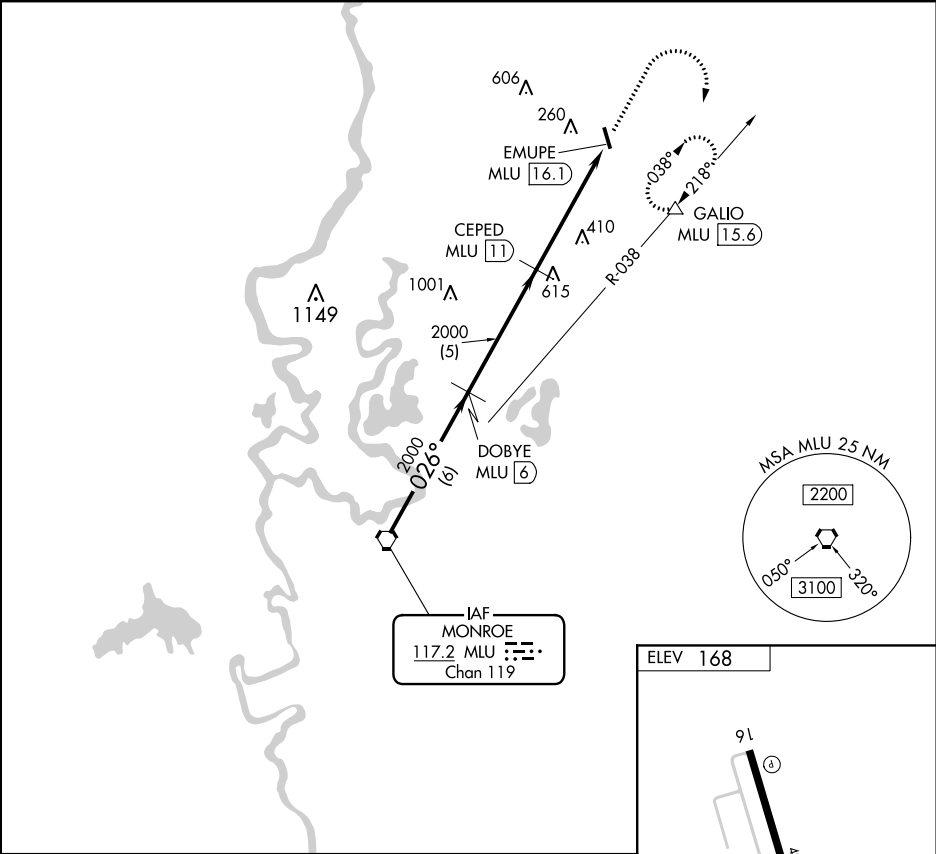
20198

VORTAC MLU 117.2 Chan 119	APP CRS 026°	Rwy Idg TDZE Apt Elev N/A N/A 168
---	------------------------	---

VOR/DME-A
MOREHOUSE MEMORIAL (BQP)

<p>▼ When local altimeter setting not received, use Monroe altimeter setting and increase all MDA 60 feet and Cat C visibility ¼ mile.</p> <p>▲ NA</p>	<p>MISSED APPROACH: Climb to 2000 then climbing right turn to 3000 via MLU R-038 to GALIO/MLU 15.6 DME and hold.</p>
--	--

AWOS-3PT 118.375	MONROE APP CON★ 126.9 307.9	UNICOM 122.8 (CTAF) 0
----------------------------	---------------------------------------	---------------------------------



MLU VORTAC	DOBYE MLU 6	CEPED MLU 11	2000	3000	GALIO
2000	2000	2000	EMUPE MLU 16.1	MLU R-038	△
Procedure Turn NA	6 NM	5 NM	5.1 NM	026° 5.1 NM from FAF	9L 34
CATEGORY	A	B	C	D	
CIRCLING	720-1	552 (600-1)	780-1 3/4 612 (700-1 3/4)	NA	

BASTROP, LOUISIANA
Amdt 9B 10MAR11

32°45'N-91°53'W

MOREHOUSE MEMORIAL (BQP)
VOR/DME-A

KBQP
MOREHOUSE MEMORIAL
BASTROP, LA
100K CIRCLING
VOR/DME-A
ADMT: 9C

