


Flight Procedures Cover Page	Task Action: Amendment	Task Type: IAP	Estimated Chart Date: 10/08/2020	APWS Task ID: 5641A434433E4F14800C9BE03F832E61	APWS Request ID: F218D7767D8C49339EA7CB54061F6477
Procedure: HI - ILS OR LOC RWY 3 AMDT 9B		Enroute: NO	Specialist: Roslewski, Russell		Agreement Number:
Airport ID: KFSD	Airport Name: JOE FOSS FIELD		Airport City: SIOUX FALLS		State: SD
Facility ID:	Facility Type:	Flight Inspection Remark Type:			

Procedure Comments:
Abbreviated Amendment

New circling areas for Cats C and D based on existing procedure at the airport – RNAV (GPS) RWY 33, Amdt 2.
New circling area for Cat E did not result in an MDA increase.

Processed IAW Aircraft Operations Group (AJW-33) Memo, October 3, 2018, Subject: Flight Inspection Review Not Required.

Dave Danner, 405-954-5077



7.29.2020
BD

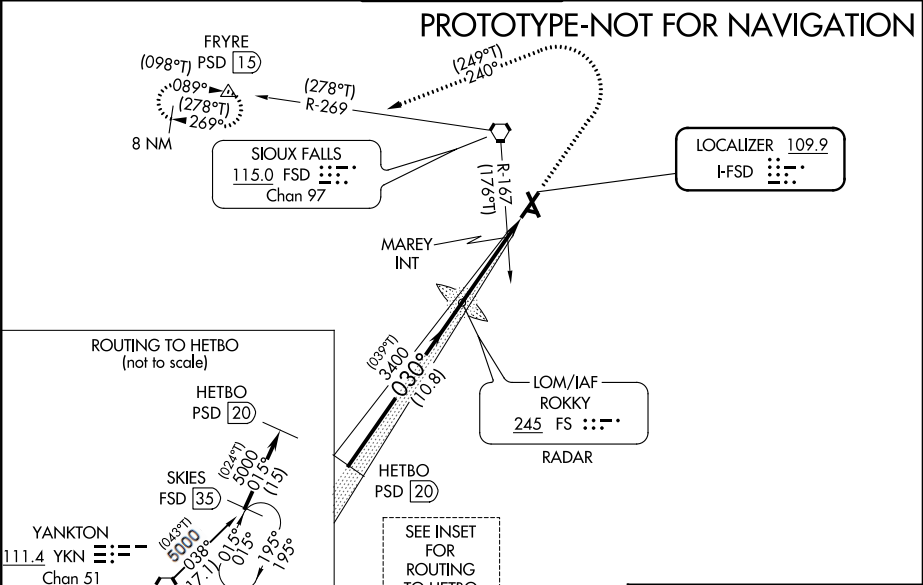
LOC I-FSD 109.9	APP CRS 030°	Rwy Idg TDZE Apt Elev	8999 1424 1430
---------------------------	------------------------	-----------------------------	---

HI-ILS or LOC RWY 3

JOE FOSS FIELD (FSD)

DME required.			MALSR	MISSED APPROACH: Climb to 3400 then climbing left turn to 5000 on heading 240° and FSD VORTAC R-269 to FRYRE/15 DME and hold.
<div>▼</div> For inop ALS, increase S-ILS 3 RVR to 4000, visibility to 3/4 SM.			<div>⚠</div> For inop ALS, increase S-LOC 3 visibility to 1 3/8 SM.	
<div>❄</div> -31°C For inop ALS, increase S-LOC 3 RVR to 5500, visibility to 1 SM.				

ATIS 126.6	SIOUX FALLS APP CON ★ 125.8 284.725	SIOUX FALLS TOWER ★ 118.3 (CTAF) 257.8	GND CON 121.9 348.6	UNICOM 122.95
----------------------	---	--	-------------------------------	-------------------------



SKIES FSD 35		HETBO PSD 20		TO HEIBO		FSD R-269 FSD 15		FRYRE FSD 15		ELEV 1430		D TDZE 1424	
FL180		(039°T) 030°		FS LOM RADAR 3305		3400		5000 hdg 240°		MAREY INT *LOC only		REIL Rwy 15 and 33 HIRL Rwy 3-21 and 15-33 MIRL Rwy 9-27 TDZ/CL Rwy 3-21	
GS 3.00° TCH 54		5000		3400		*1940						1523 TWR 1519	
15 NM		10.8 NM		4.3 NM		1.4 NM						8099 X 150 3148 X 75 1567 Λ	
CATEGORY		A		B		C		D		E			
S-ILS 3		NA		1674/24 250 (300-½)									
S-LOC 3		NA		1940/55 516 (600-1)		1940/60 516 (600-1¼)							
CIRCLING		NA		2060-1¾ 630 (700-1¾)		2200-2½ 770 (800-2½)		2300-3 870 (900-3)					
MAREY FIX MINIMUMS													
S-LOC 3		NA		1780/30 356 (400-½)		1780/40 356 (400-¾)							
CIRCLING		NA		2060-1¾ 630 (700-1¾)		2200-2½ 770 (800-2½)		2300-3 870 (900-3)					

1470
3
A5
030° 5.7 NM
from FAF

FAF to MAP 5.7 NM

Knots	60	90	120	150	180
Min:Sec	5:42	3:48	2:51	2:17	1:54

HI-ILS or LOC RWY 3

LOC I-FSD

109.9

APCH CRS

030°

Rwy Idg

899

TDZE

1424

Arprt Elev

1430

JAL-396 [USAF]

SIoux FALLS/JOE FOSS FIELD (KFSD)

▼

* When ALS inop, increase CAT E vis to ¾ mile.

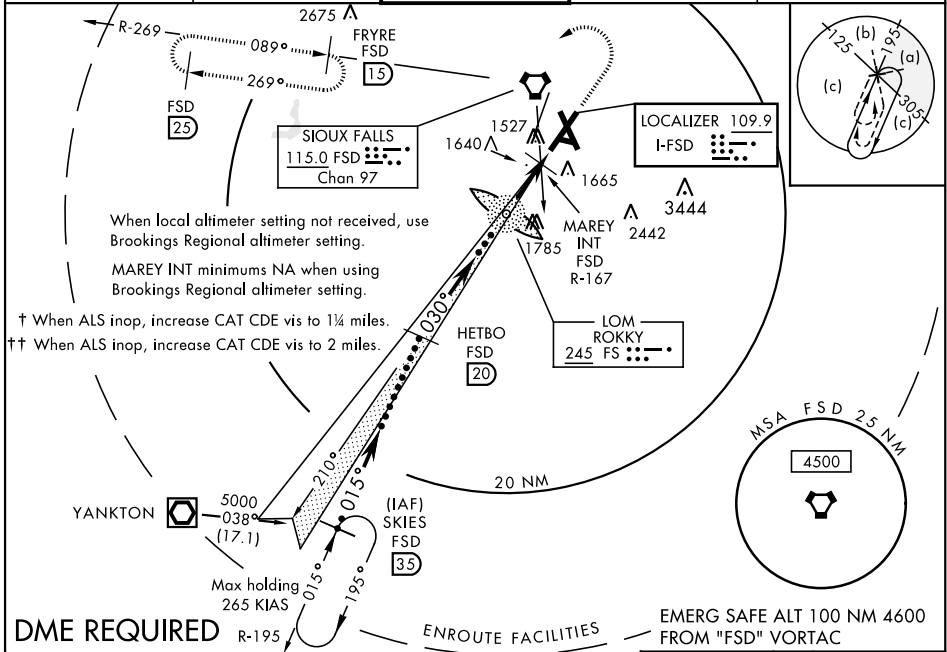
** When ALS inop, increase CAT E vis to 1¼ mile.

*** When ALS inop, increase CAT E vis to 1½ mile.

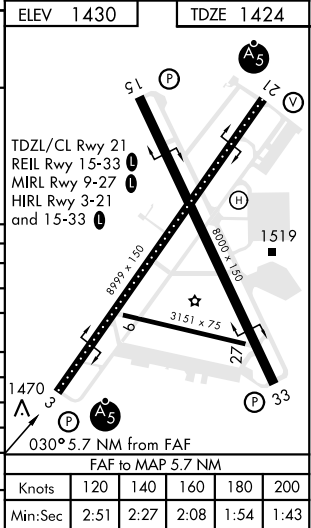
MALSR

MISSED APPROACH: Climb to 3400, then climbing left turn to 5000 via heading 240° and via FSD VORTAC R-269 to FRYRE (FSD 1.5 DME) and hold.

ATIS 126.6	SIoux FALLS APP CON 125.8 126.9 353.6	SIoux FALLS TOWER ★ 118.3 257.8	GND CON 121.9 348.6	ASR
---------------	--	------------------------------------	------------------------	-----



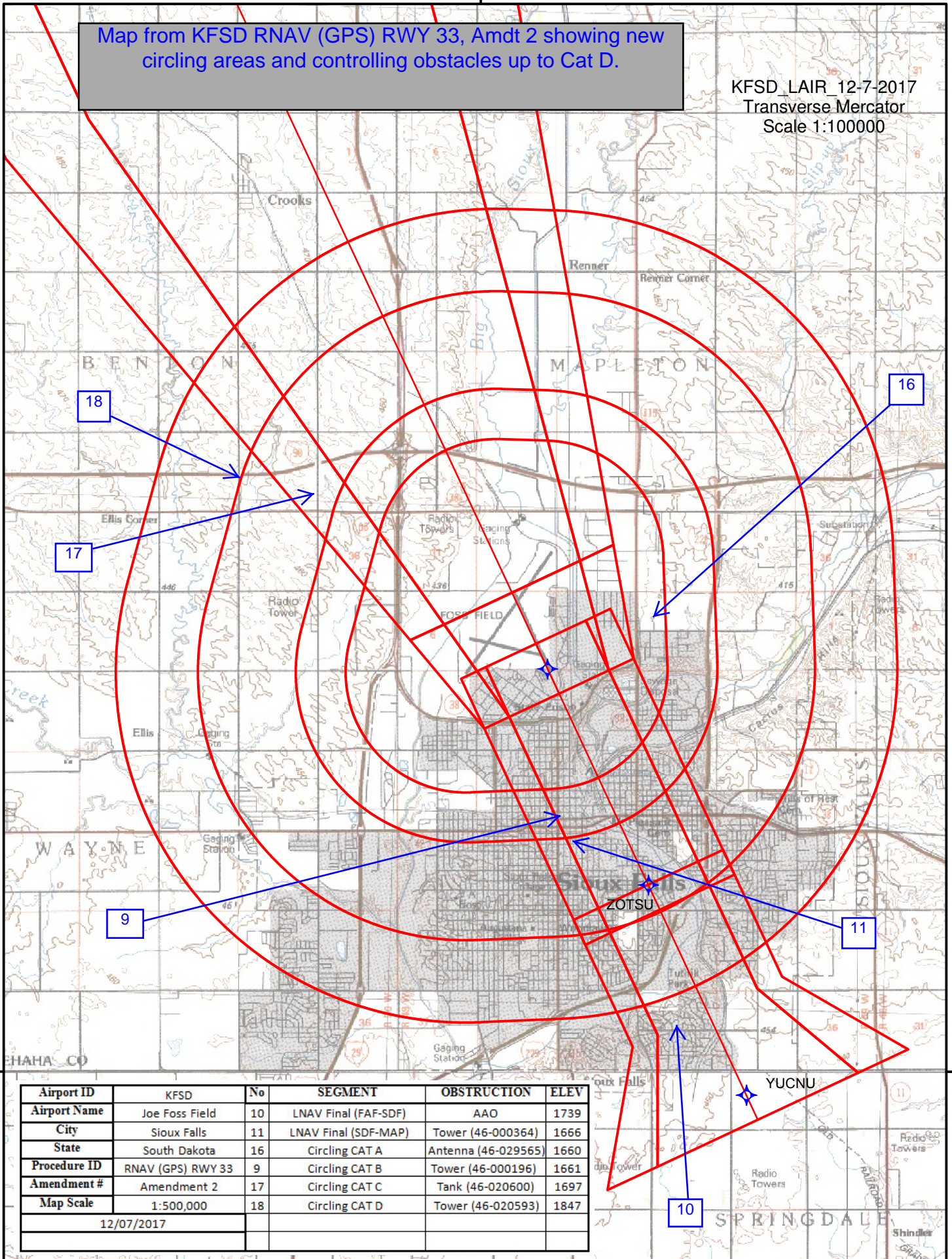
DME REQUIRED		ENROUTE FACILITIES	
FL180	015°	3400	5000
SKIES R-195	015°	3400	5000
HETBO Intcp Lczr	030°	3400	5000
ROKKY LOM	3334	3400	5000
MAREY INT FSD R-167	1940	3400	5000
GS 3.00° TCH 54	5000	3400	5000
10.8 NM		4.3 NM	1.4 NM
CATEGORY	C	D	E
S-ILS 3 *	1674/24	250	(300-½)
S-LOC 3 **	1940/50 516 (600-1)	1940/60 516 (600-1½)	
CIRCLING	1980-1½ 550 (600-1½)	2040-2 610 (700-2)	2300-3 870 (900-3)
MAREY FIX MINIMA			
S-LOC 3 ***	1780/24 356 (400-½)	1780/40 356 (400-¾)	
BROOKINGS REGIONAL ALTIMETER SETTING			
S-ILS 3 †	1805/40	381	(400-¾)
S-LOC 3 ††	2080/60 656 (700-1½)	2080-1½ 656 (700-1½)	2080-1¾ 656 (700-1¾)
CIRCLING	2120-2 690 (700-2)	2280-2¾ 850 (900-2¾)	2440-3 1010 (1100-3)



96°45'0"W

Map from KFSD RNAV (GPS) RWY 33, Amdt 2 showing new circling areas and controlling obstacles up to Cat D.

KFSD LAIR 12-7-2017
Transverse Mercator
Scale 1:100000



Airport ID	KFSD	No	SEGMENT	OBSTRUCTION	ELEV
Airport Name	Joe Foss Field	10	LNAV Final (FAF-SDF)	AAO	1739
City	Sioux Falls	11	LNAV Final (SDF-MAP)	Tower (46-000364)	1666
State	South Dakota	16	Circling CAT A	Antenna (46-029565)	1660
Procedure ID	RNAV (GPS) RWY 33	9	Circling CAT B	Tower (46-000196)	1661
Amendment #	Amendment 2	17	Circling CAT C	Tank (46-020600)	1697
Map Scale	1:500,000	18	Circling CAT D	Tower (46-020593)	1847
12/07/2017					

KFSD
Joe Foss Field
Sioux Falls, SD
1:100k
Circling - Cat E

Circling CAT E TOWER (1939)
46-000424

Scale: 0 20000 40000 60000 FT

Circling CAT E TOWER (1939)
46-000424