

Flight Procedures Cover Page	Task Action: FLIGHT CHECK	Task Type: IAP	Estimated Chart Date: 12/29/2022	APWS Task ID: 56212D27B4F0402C9814CA80ADD38732	APWS Project ID: B44897B596284420B6C41DF75495EA05
Procedure: ILS OR LOC RWY 14 AMDT 2		Enroute: NO	Specialist: Campbell, Colin		Agreement Number:
Airport ID: KDNN			Airport City: DALTON		State: GA
Facility ID: DNN	Facility Type: ILS	Flight Inspection Remark Type: New FC Slot			
<div>Procedure Comments:</div> <div>ACTIVE AIRPORT DATA USED</div> <div>ACTIVE I-DNN DATA USED</div> <div>ACTIVE RMG VORTAC DATA USED</div> <div>GQO VORMON</div> <div>SUMMARY OF CHANGES: FEEDER REMOVED. INITIAL, MISSED APPROACH, AND ALTERNATE MISSED APPROACH REDESIGNED PER FPT REQUEST. NEW ESV FOR JILIS.</div> <div>CONTACT: JASON KRETSCHMER, AJV-A421, (405) 954-4019</div> <div>J ZEDER 09/29/2022</div> <div>QUALITY 16 CHECKED</div>					

FIPC BASIC FORM							
PROCEDURE: ILS OR LOC RWY 14 AMDT 2			AIRPORT NAME: DALTON MUNI		AIRPORT ID: KDNN	SPECIAL CONTROL NO: AP-10-003-22	
FAC ID: DNN		CITY: DALTON			ST: GA	ORIG CHART DATE: 12/29/2022	
DFL TYPE: PROC/A	THIRD PARTY: <input type="checkbox"/> YES	EST. TIME ON SITE: 0.4	REIMB. NUMBER: AC0721		PTS TASK ID: 56212D27B4F0402C9814CA80ADD38732		
PREFLIGHT NOTES							
REVIEWER:					DATE:		
COMMENTS:					CHECK ONE:		
					<input type="checkbox"/> FLT CK REQ <input type="checkbox"/> NFCR <input type="checkbox"/> REJECT		
							YES
					CPV COMPLETE?		X
PROCEDURE RESULTS							
INSPECTION DATE: 10/28/2022		CREW #: VN364	N #: N80	INSTRUMENT PROCEDURE STATUS: <input checked="" type="checkbox"/> SAT <input type="checkbox"/> SAT W/CHANGES <input type="checkbox"/> UNSAT		ARINC CODING: <input checked="" type="checkbox"/> SAT <input type="checkbox"/> SAT/GOLD <input type="checkbox"/> UNSAT	
FLIGHT INSPECTOR SIGNATURE: kevin riese @ 10/28/2022 14:02			PRINTED NAME: RIESE, KEVIN JOHN				NOTAM INITIATED? <input type="checkbox"/> YES <input checked="" type="checkbox"/> NO
FLIGHT INSPECTOR REMARKS: ILS OR LOC RWY 14 AMDT 2 completed satisfactory							
IN-FLIGHT OBSTACLE REPORT							
OBSTRUCTION ID #:	COORDINATES OR LOCATION:		GNSS ALTITUDE (MSL):		BAROMETRIC ALTITUDE (MSL):		HEIGHT ABOVE GROUND LEVEL:

ILS or LOC RWY 14
DALTON MUNI (DNN)

MISSED APPROACH: Climb to 1700 then climbing right turn to 3000 direct JILIS and hold.

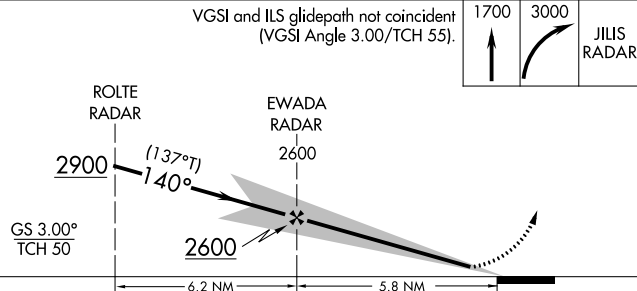
A5

UNICOM
122.975 (CTAF) **L**



APCH FIX ROME
RMG $\equiv \equiv \equiv$
115.4
Chan 101
(169°) (170°)
(350°)
349°
R-169
(170°T)

VGSI and ILS glidepath not coincident
(VGSI Angle 3.00/TCH 55).

[illegible]

LOC I-DNN <u>110.9</u>	APP CRS 140°	Rwy Idg TDZE Apt Elev	5496 709 709
----------------------------------	------------------------	-----------------------------	---

ILS or LOC RWY 14
DALTON MUNI (DNN)

RADAR required to define EWADA. From COMAR: RNAV 1-GPS required.



MISSED APPROACH: Climb to 1700 then climbing right turn to 3100 on heading 300° and GGO VORTAC R-144 to GGO VORTAC and hold.

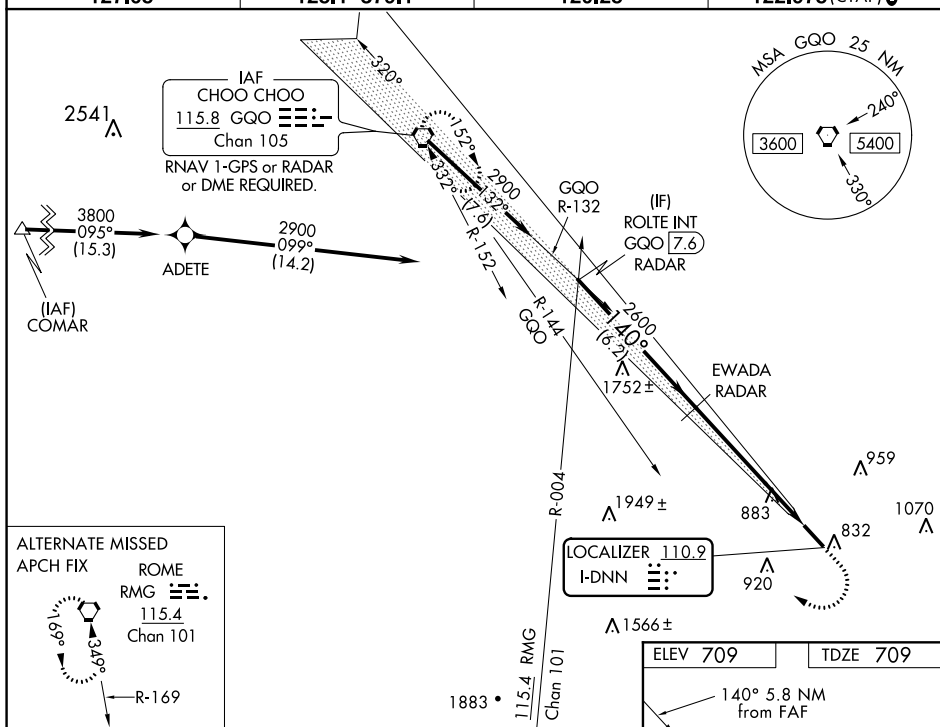
T Autopilot coupled approach NA below 1200 MSL. Circling Rwy 32 NA at night. DME from GQO VORTAC. Simultaneous reception of I-DNN and GQO DME required. Rwy 14 helicopter visibility reduction below $\frac{3}{4}$ SM NA. Inop table does not apply to S-ILS 14. For inop ALS, increase S-LOC 14 Cat A/B visibility to 1 SM and Cat C/D to $1\frac{3}{4}$ SM.

AWOS-3PT
127.65

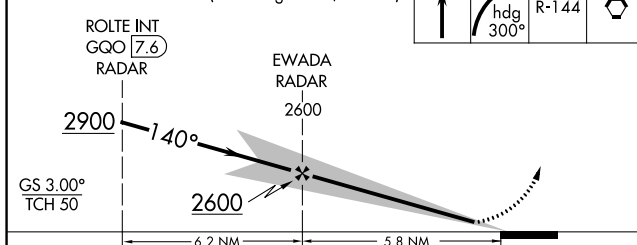
CHATTANOOGA APP CON ★
125.1 379.1

CLNC DEL
120-25

UNICOM
122.975 (CTAF) **L**

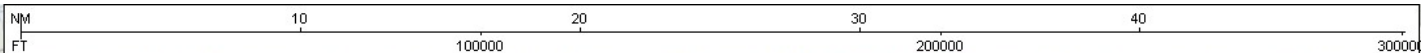


VGSI and ILS glidepath not coincident
(VGSI Angle 3.00/TCH 55).

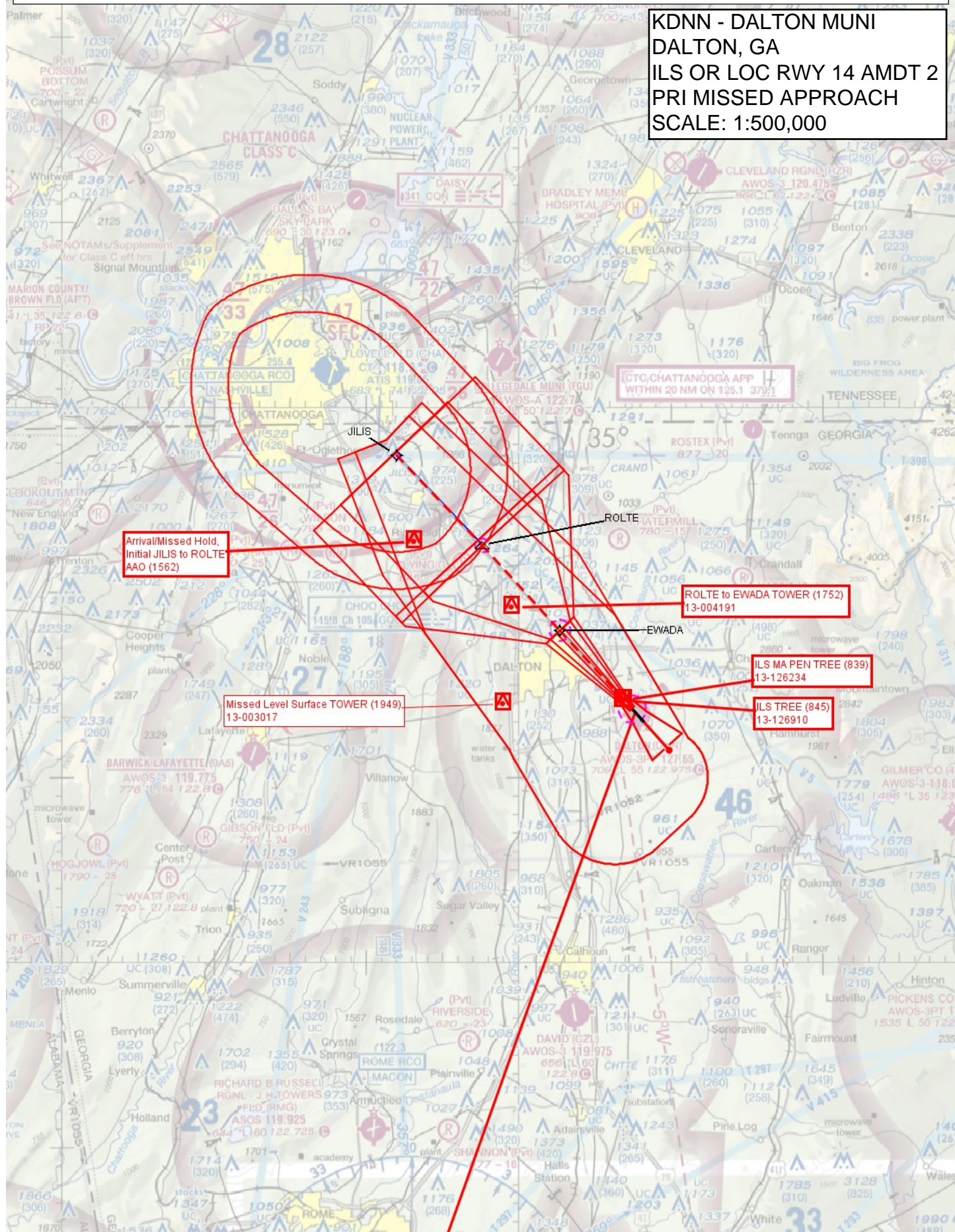


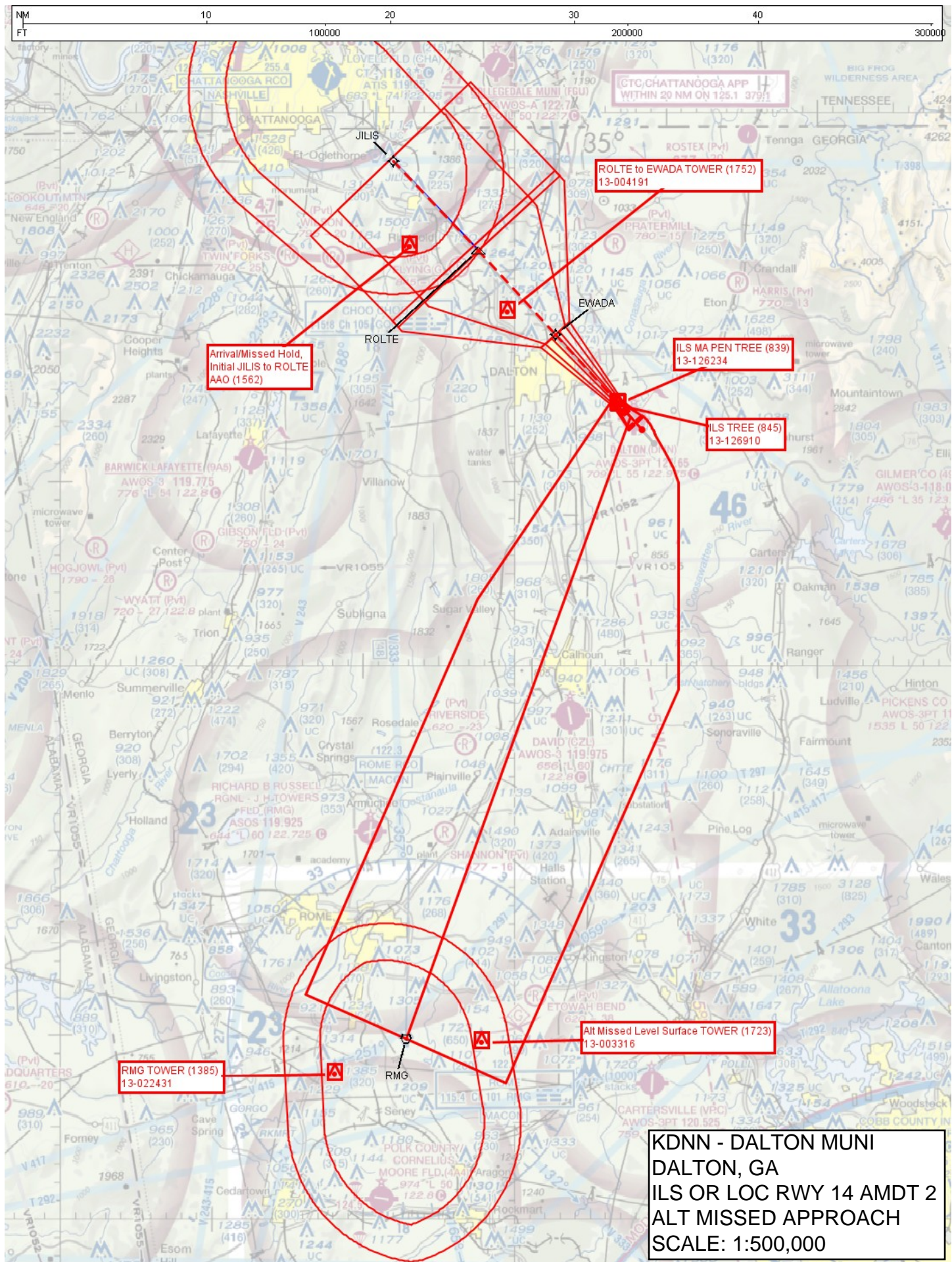
CATEGORY	A	B	C	D
S-ILS 14	959-3/4 250 (300-3/4)			
S-LOC 14	1320-3/4 611 (700-3/4)	1320-13/8 611 (700-13/8)		
C CIRCLING	1320-1 611 (700-1)	1320-13/4 611 (700-13/4)	1420-2/4 711 (800-2/4)	

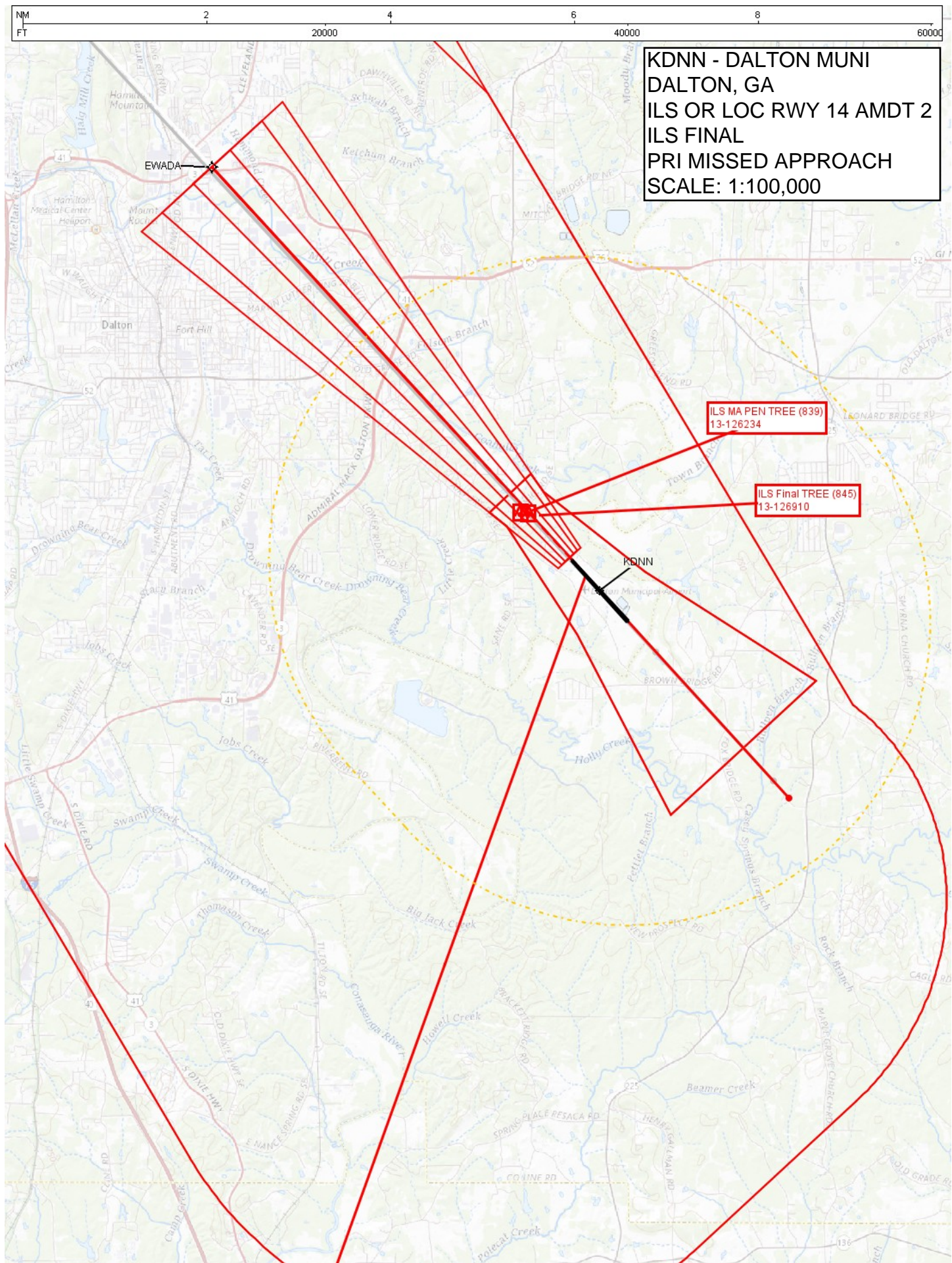
FAF to MAP 5.8 NM	
Knots	60 90 120 150 180
Min:Sec	5:48 3:52 2:54 2:19 1:56

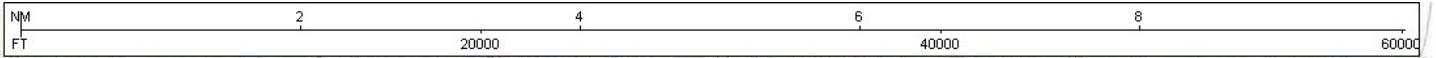


KDNN - DALTON MUNI
DALTON, GA
ILS OR LOC RWY 14 AMDT 2
PRI MISSED APPROACH
SCALE: 1:500,000

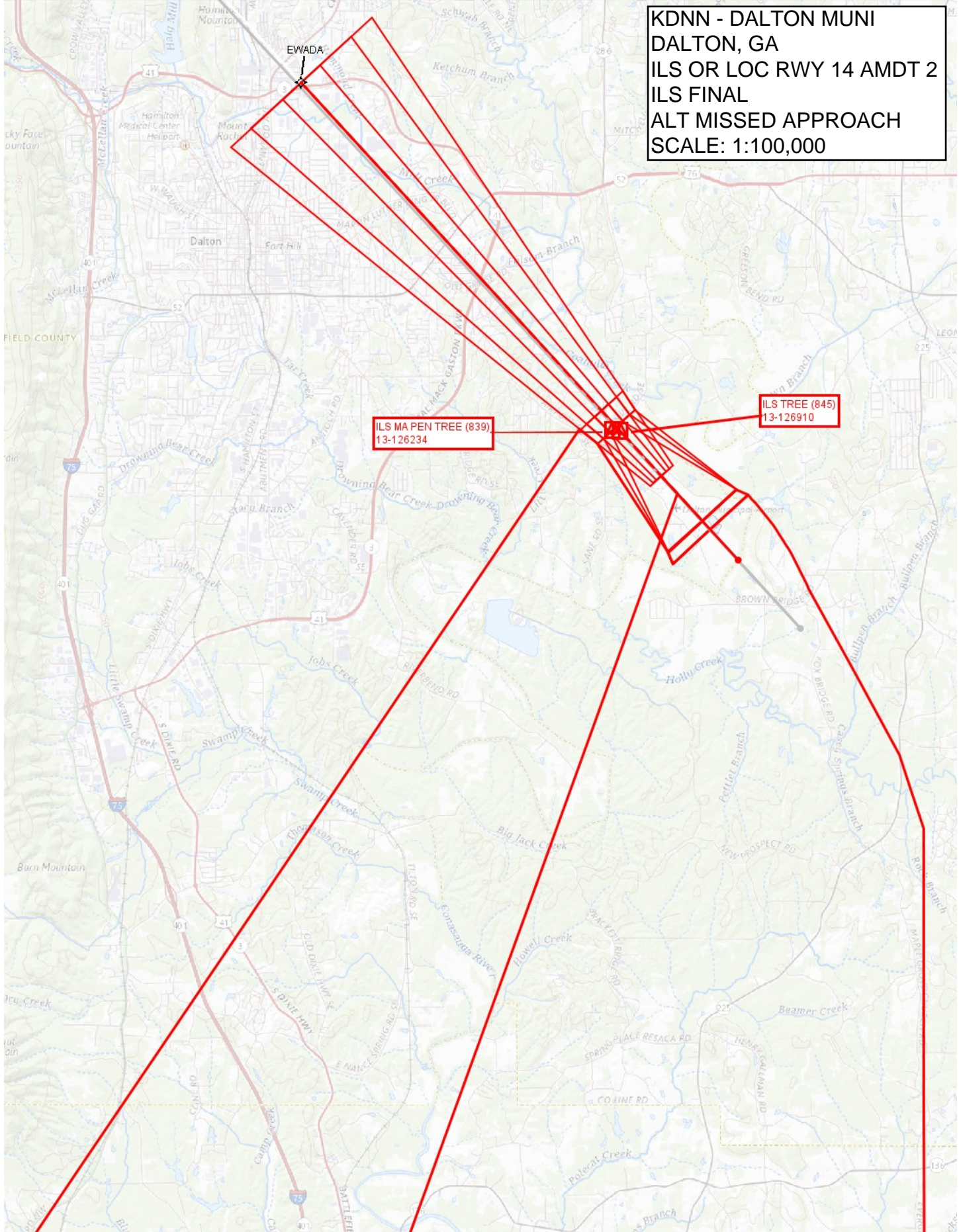


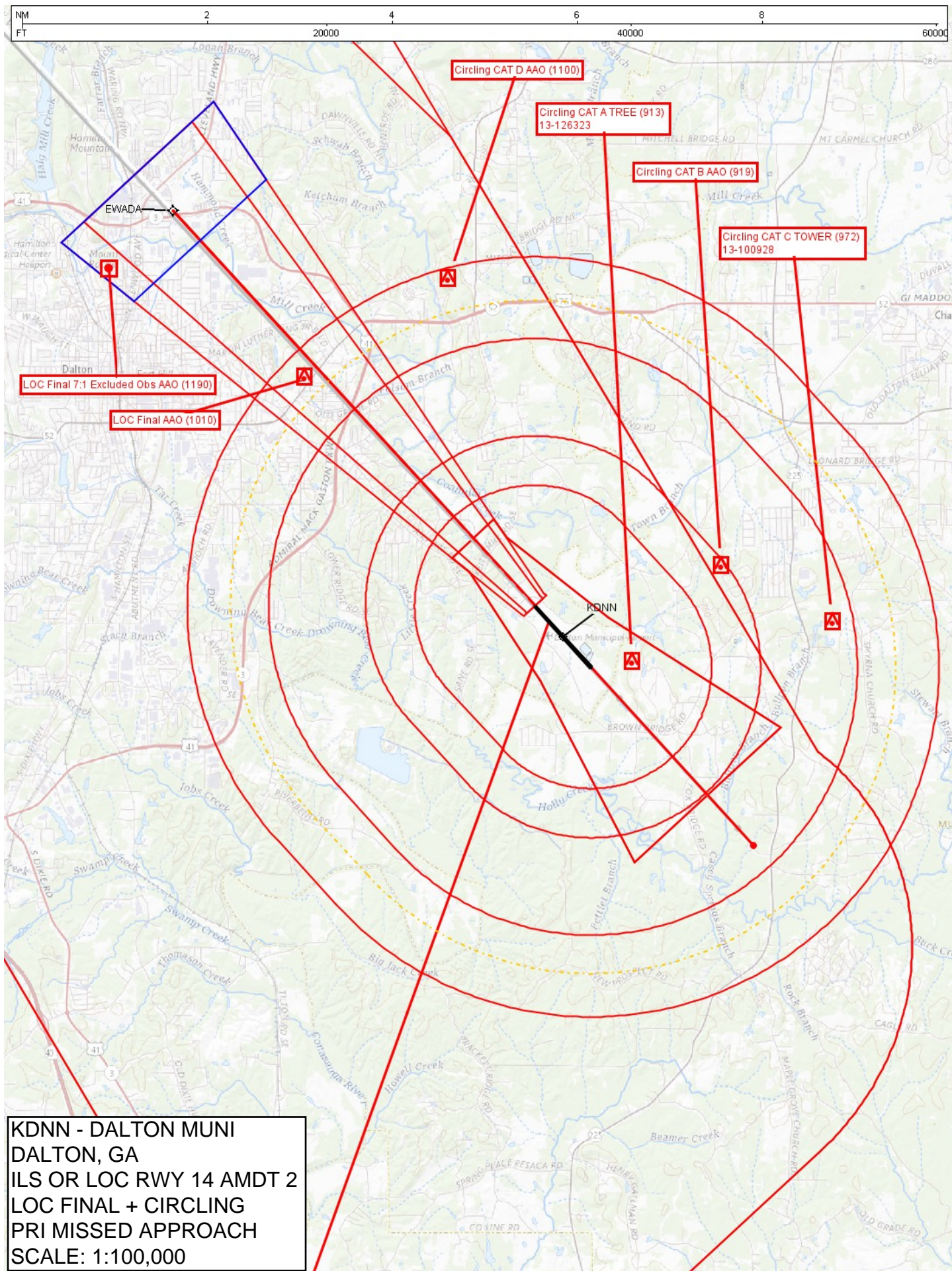


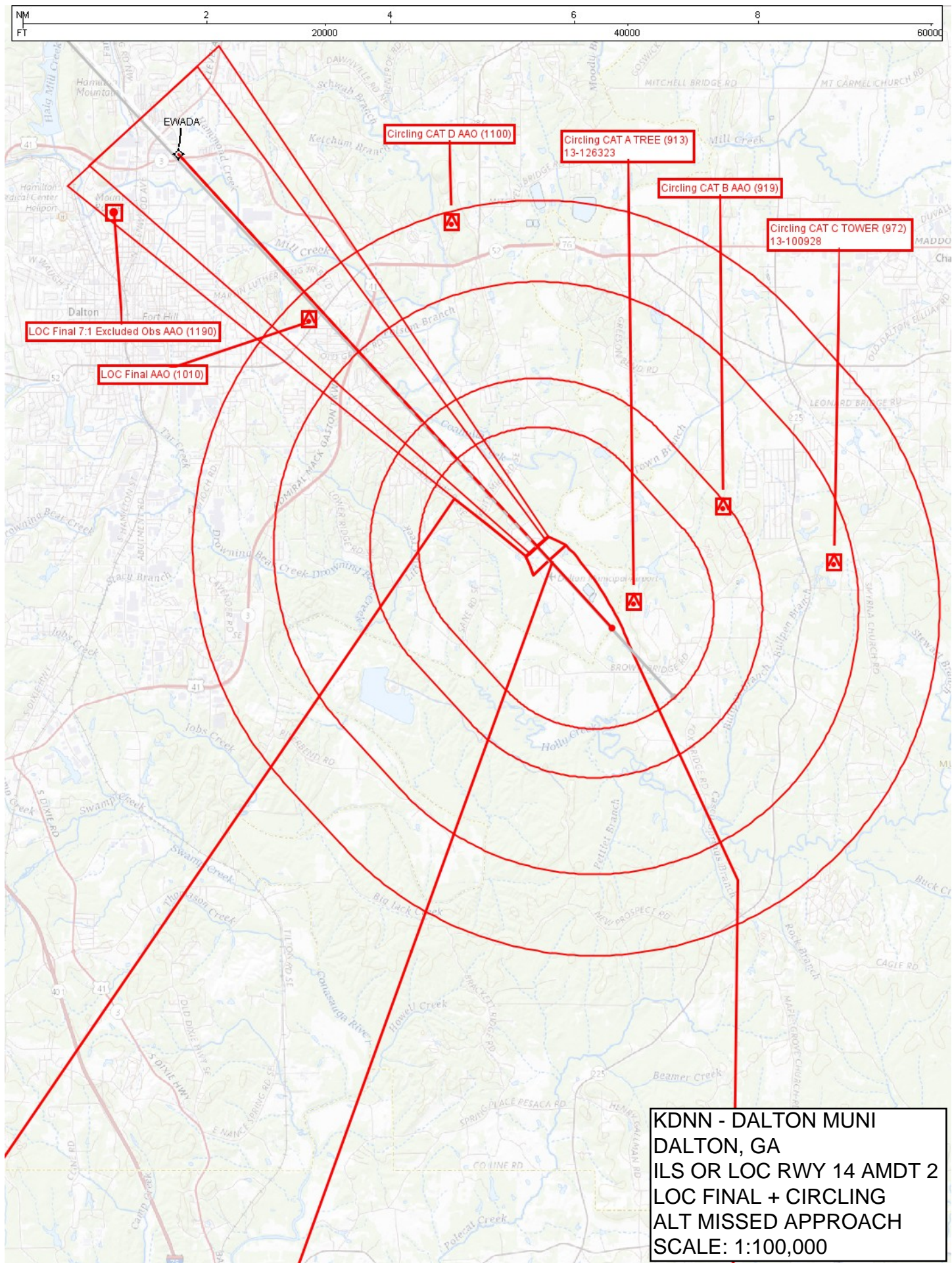




KDNN - DALTON MUNI
DALTON, GA
ILS OR LOC RWY 14 AMDT 2
ILS FINAL
ALT MISSED APPROACH
SCALE: 1:100,000







ESV Details

Originating Office :AJV-A		Airspace Docket Number :		Request Type :Establish		
Facility Data						
Chart Name:ILS OR LOC RWY 14		City:DALTON		Ident:DNN		State:GA
Type/Class: LOC		Frequency: M110.9		Reference Number: 22098687		
Extended Service Volume Data: (Requesting Officer)						
ESV ID	Radial 1	Radial 2	Distance	Minimum Altitude	Maximum Altitude	
NG 017530 - 001	320		20	29	60	
Requirement: JILIS IAF ILS OR LOC RWY 14						
Signature:Campbell Colin		Routing Symbol:AJV-A421				Date:09/28/2022
Extended Service Volume Data: (FMO)						
ESV ID	Radial 1	Radial 2	Distance	Minimum Altitude	Maximum Altitude	Action Type
NG 017530 - 001	320		20	29	60	APPROVE
Requirement/Remarks: JILIS IAF ILS OR LOC RWY 14APPROVED. FREQ. PROTECTION & FIELD STRENGTH. PENDING FLIGHT INSPECT @ REQUIRED. DIST. & MIN ALT..						
Signature:Hughes Dennis		Routing Symbol:			Date:09/28/2022	
Extended Service Volume Data: (Super FMO)						
ESV ID	Radial 1	Radial 2	Distance	Minimum Altitude	Maximum Altitude	Action Type
NG 017530 - 001	320		20	29	60	APPROVE
Requirement/Remarks: JILIS IAF ILS OR LOC RWY 14APPROVED. FREQ. PROTECTION & FIELD STRENGTH. PENDING FLIGHT INSPECT @ REQUIRED. DIST. & MIN ALT..						
Signature:Hughes Dennis		Routing Symbol:			Date:09/28/2022	
Extended Service Volume Data: (FIFO)						
ESV ID	Radial 1	Radial 2	Distance	Minimum Altitude	Maximum Altitude	Action Type
NG 017530 - 001	320					
Requirement/Remarks:						
Signature:		Routing Symbol:			Date:	