

Flight Procedures Cover Page	Task Action: FLIGHT CHECK	Task Type: IAP	Estimated Chart Date: 02/23/2023	APWS Task ID: 55C3B057E85949DAA59540F59319C7CB	APWS Project ID: 252778D5B46C4F909C3B352194F4BBE1
Procedure: RNAV (GPS) RWY 6 AMDT 2D		Enroute: NO	Specialist: Smart, Phillip		Agreement Number:
Airport ID: KCTZ			Airport City: CLINTON		State: NC
Facility ID:	Facility Type:	Flight Inspection Remark Type: New FC Slot			
<div>Procedure Comments: CLEARs T-NOTAM 2/8330</div> <div>CONTACT CASIMIR TABAKA, Manager AJV-A432, 405.954.7931</div> <div>QUALITY 26 CHECKED</div> <div>QUALITY 41 CHECKED</div>					

FIPC BASIC FORM									
PROCEDURE: RNAV (GPS) RWY 6 AMDT 2D				AIRPORT NAME: CLINTON-SAMPSON COUNTY		AIRPORT ID: KCTZ		SPECIAL CONTROL NO: AG-11-253-22	
FAC ID: KCTZ06.02		CITY: CLINTON				ST: NC		ORIG CHART DATE: 02/23/2023	
DFL TYPE: PROC/S	THIRD PARTY: <input type="checkbox"/> YES	EST. TIME ON SITE: 0.4	REIMB. NUMBER:		PTS TASK ID: 55C3B057E85949DAA59540F59319C7CB				
PREFLIGHT NOTES									
REVIEWER:						DATE:			
COMMENTS:						CHECK ONE:			
						<input type="checkbox"/> FLT CK REQ <input type="checkbox"/> NFCR <input type="checkbox"/> REJECT			
								YES	NO
						CPV COMPLETE?		X	
PROCEDURE RESULTS									
INSPECTION DATE: 01/24/2023		CREW #: VN137	N #: N77	INSTRUMENT PROCEDURE STATUS: <input checked="" type="checkbox"/> SAT <input type="checkbox"/> SAT W/CHANGES <input type="checkbox"/> UNSAT			ARINC CODING: <input checked="" type="checkbox"/> SAT <input type="checkbox"/> SAT/GOLD <input type="checkbox"/> UNSAT		
FLIGHT INSPECTOR SIGNATURE: bob s pressler @ 01/24/2023 15:26				PRINTED NAME: PRESSLER, ROBERT STEPHEN				NOTAM INITIATED? <input type="checkbox"/> YES <input checked="" type="checkbox"/> NO	
FLIGHT INSPECTOR REMARKS: SAT									
IN-FLIGHT OBSTACLE REPORT									
OBSTRUCTION ID #:	COORDINATES OR LOCATION:		GNSS ALTITUDE (MSL):		BAROMETRIC ALTITUDE (MSL):		HEIGHT ABOVE GROUND LEVEL:		

CLINTON, NORTH CAROLINA

AL-5782 (FAA)

21224

WAAS CH 53720 W06A	APP CRS 060°	Rwy Idg 5008 TDZE 142 Apt Elev 144
--	------------------------	---

RNAV (GPS) RWY 6

CLINTON-SAMPSON COUNTY (CTZ)

RNP APCH.

▼ Baro-VNAV NA when using Kenansville altimeter setting. For uncompensated Baro-VNAV systems, LNAV/VNAV NA below -15°C (5°F) or above 43°C (109°F). VDP NA with Kenansville altimeter setting.
 ▲ When local altimeter setting not received, use Kenansville altimeter setting and increase LPV DA to 387 feet; increase LNAV/VNAV DA to 590 feet and all visibilities ½ SM; increase all MDAs 60 feet and visibility Cats C and D ¼ SM. Rwy 24 helicopter visibility reduction below 1 SM NA. Circling Rwy 24 NA at night.

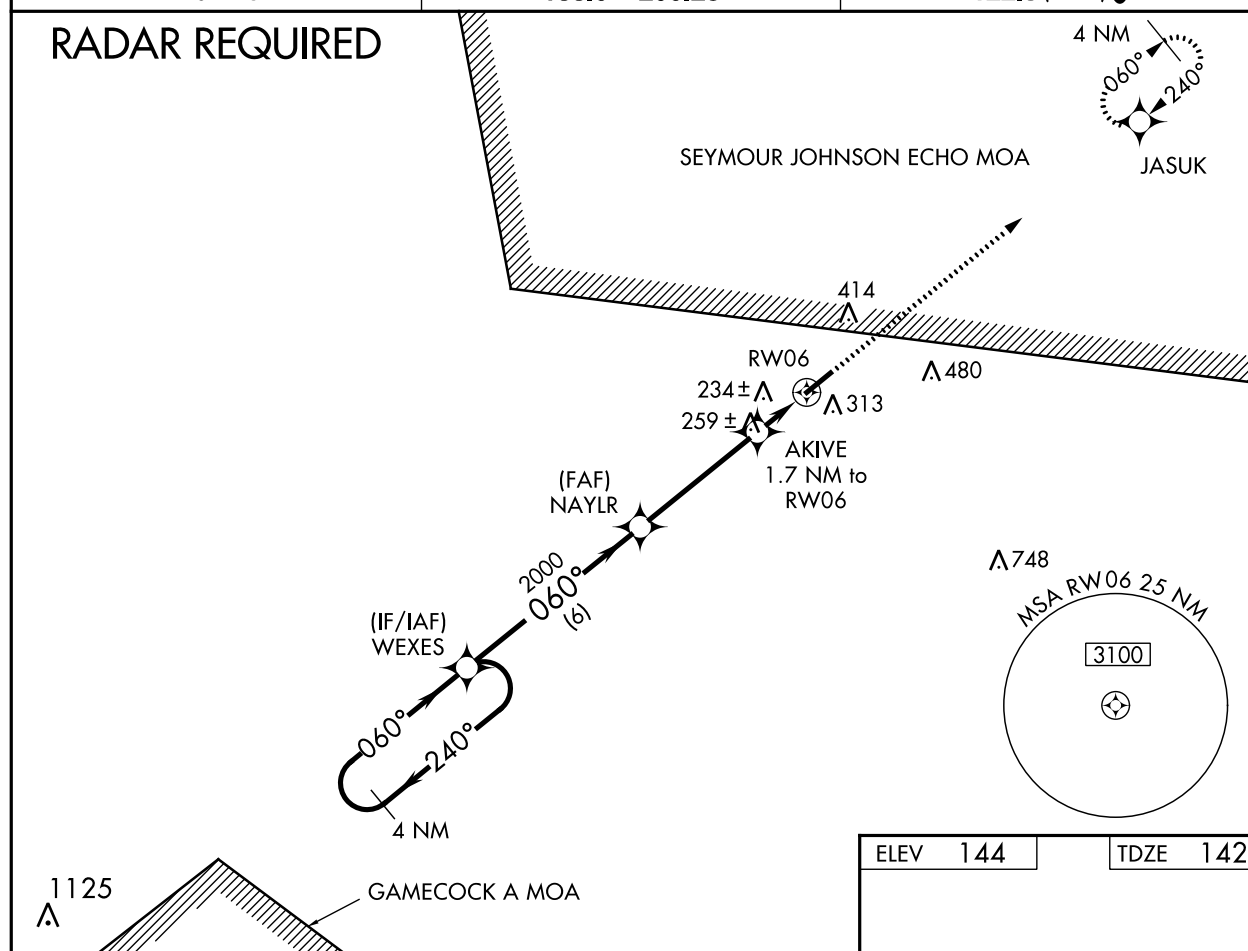
MISSED APPROACH:
Climb to 2500 direct JASUK and hold.

AWOS-3
119.125

FAYETTEVILLE APP CON
133.0 290.25

UNICOM
122.8 (CTAF) 0

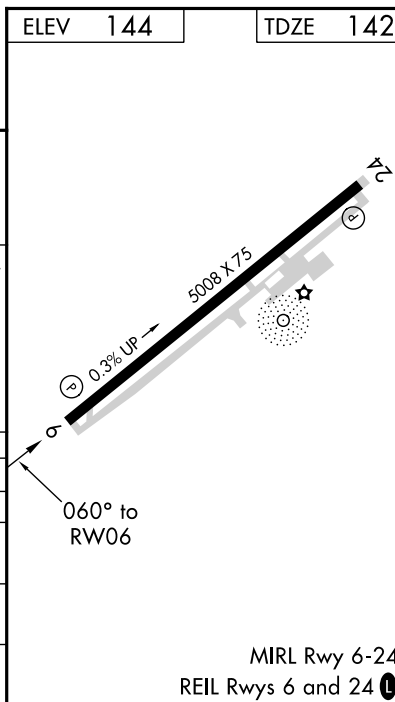
RADAR REQUIRED



SE-2, 08 SEP 2022 to 06 OCT 2022

SE-2, 08 SEP 2022 to 06 OCT 2022

<div>4 NM Holding Pattern</div> <div>2500</div> <div>GP 3.00° TCH 39</div>		<div>WEXES</div> <div>2000</div> <div>2000</div>	<div>NAYLR</div> <div>2000</div> <div>*700</div>	<div>AKIVE</div> <div>1.7 NM to RW06</div> <div>*1.1 NM to RW06</div> <div>RW06</div>	<div>2500</div> <div>JASUK</div> <div>*LNAV only.</div>
<div>←240°</div> <div>060°→</div> <div>060°</div> <div>6 NM</div> <div>4.1 NM</div> <div>0.6</div> <div>1.1</div>					
CATEGORY	A	B	C	D	
LPV DA	342-¾		200 (200-¾)		
LNAV/ VNAV DA	545-1⅜		403 (500-1⅜)		
LNAV MDA	520-1	378 (400-1)	520-1⅝	378 (400-1⅝)	
CIRCLING	680-1 536 (600-1)	780-1 636 (700-1)	840-2 696 (700-2)	840-2¼ 696 (700-2¼)	



CLINTON, NORTH CAROLINA
Amdt 2C 20MAY21

34°58'N-78°22'W

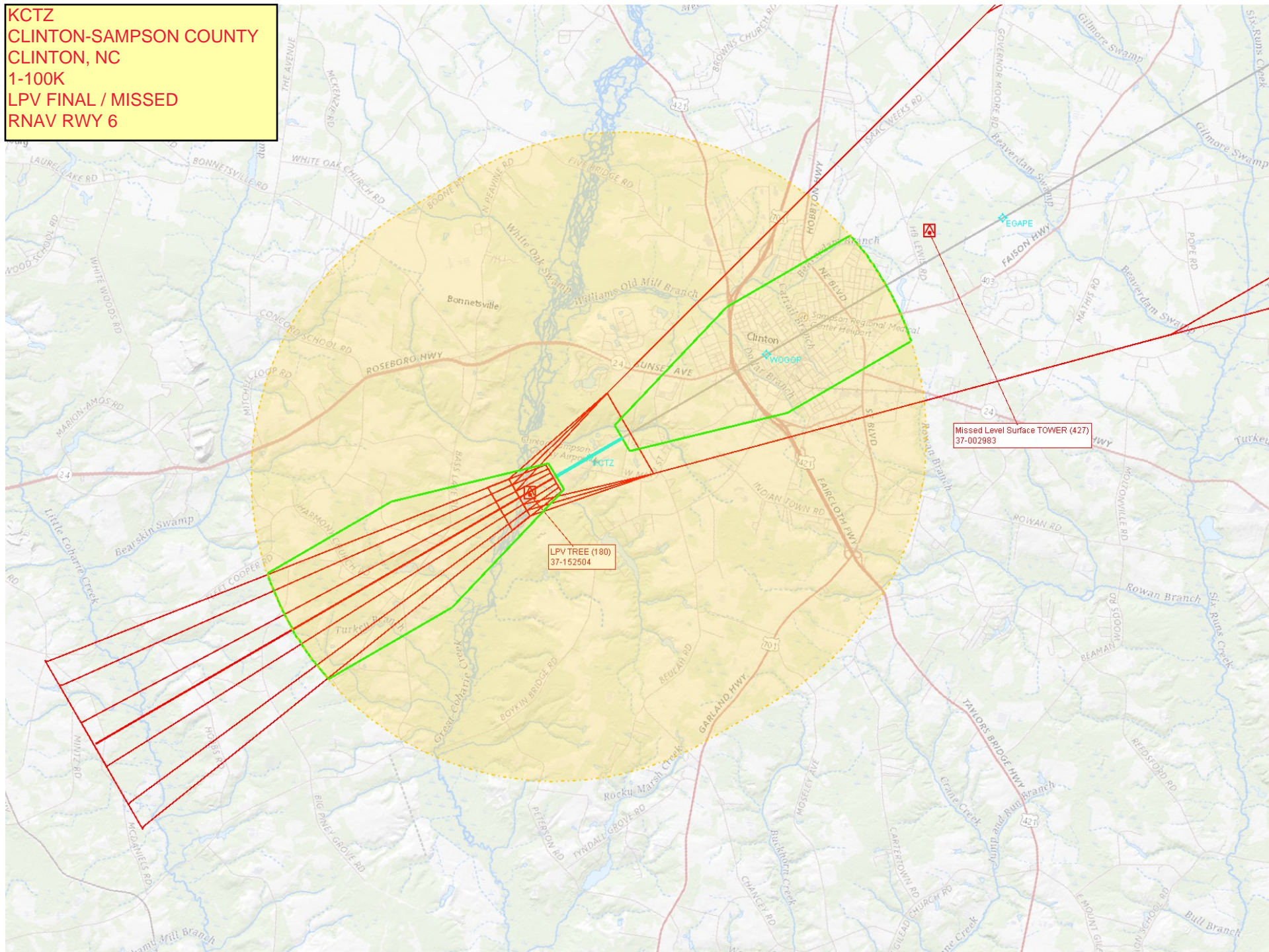
CLINTON-SAMPSON COUNTY (CTZ)
RNAV (GPS) RWY 6

MIRA Rwy 6-24
REIL Rwy 6 and 24 0

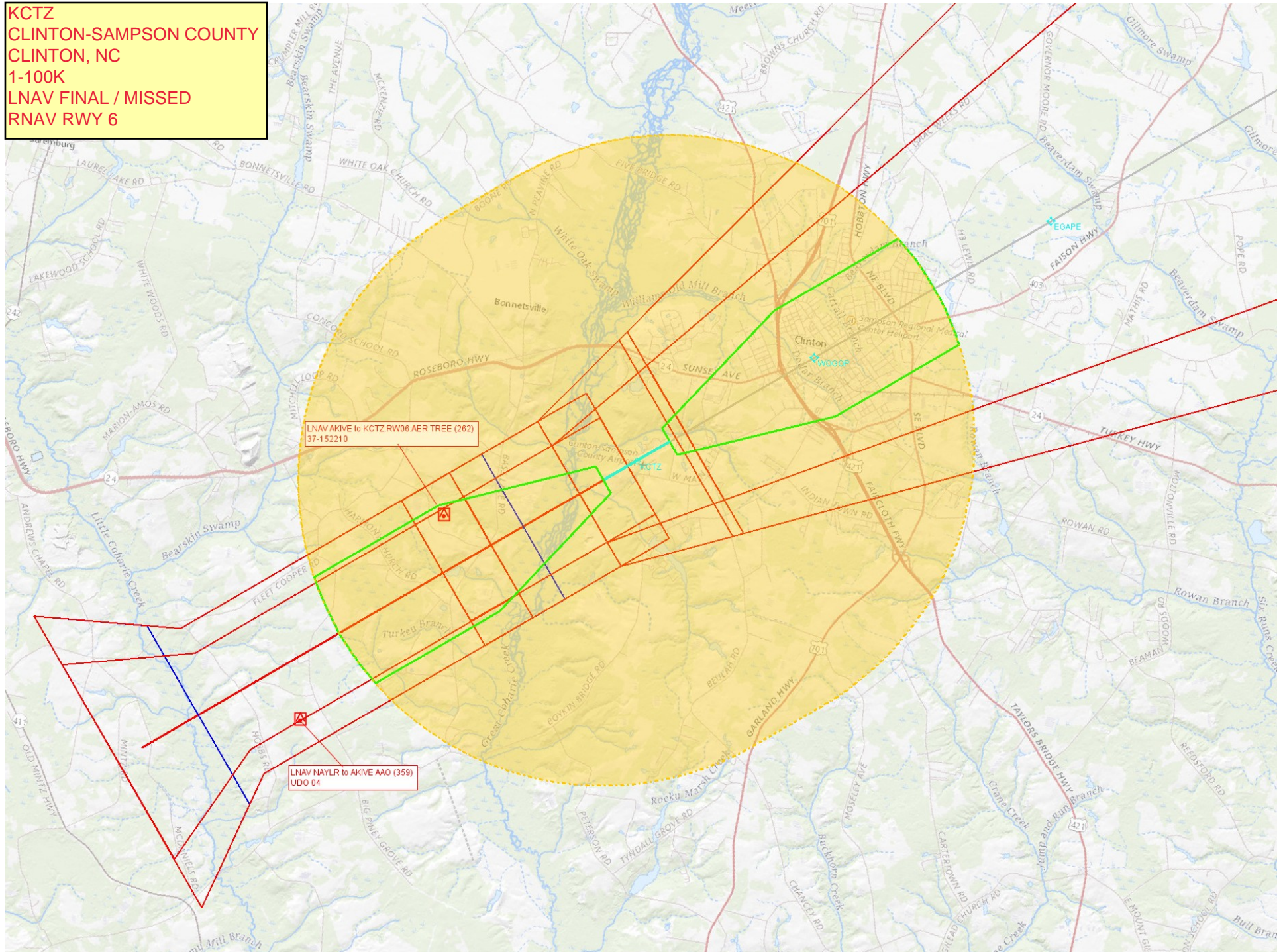
KCTZ
CLINTON-SAMPSON COUNTY
CLINTON, NC
1-500K
LPV FINAL / MISSED
RNAV RWY 6



KCTZ
CLINTON-SAMPSON COUNTY
CLINTON, NC
1-100K
LPV FINAL / MISSED
RNAV RWY 6



KCTZ
CLINTON-SAMPSON COUNTY
CLINTON, NC
1-100K
LNAV FINAL / MISSED
RNAV RWY 6



KCTZ
CLINTON-SAMPSON COUNTY
CLINTON, NC
1-100K
CIRCLING
RNAV RWY 6

