

Flight Procedures Cover Page	Task Action: P-NOTAM	Task Type: IAP	Estimated Chart Date: 10/07/2021	APWS Task ID: 5586804494EF4060BDFB2A9ED5990E2C	APWS Project ID: AD61C8BF0F404AF486FFC5590713807D
Procedure: VOR RWY 23 AMDT 0C		Enroute: NO	Specialist: Fowler, Shane		Agreement Number:
Airport ID: KDSM			Airport City: DES MOINES		State: IA
Facility ID:	Facility Type:	Flight Inspection Remark Type:			
<p>Procedure Comments: P-NOTAM.</p> <p>THIS CANCELS NOTAM #1/6124.</p> <p>PROCESSED IAW AIRCRAFT OPERATIONS GROUP (AJF-10) MEMO, APRIL 29, 2020, SUBJECT: FLIGHT INSPECTION REVIEW NOT REQUIRED.</p> <p>CONTACT: ALLAN WILL 405-954-6103.</p>					

J ZEDER 06/22/2021



Digitally signed by
MARY MCDONALD
Jun 22, 2021



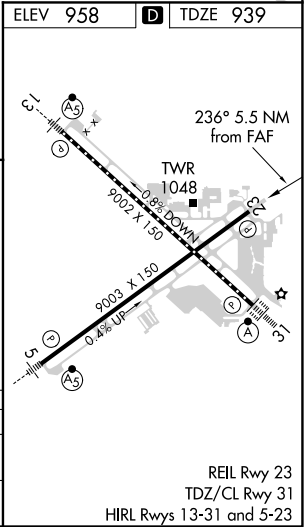
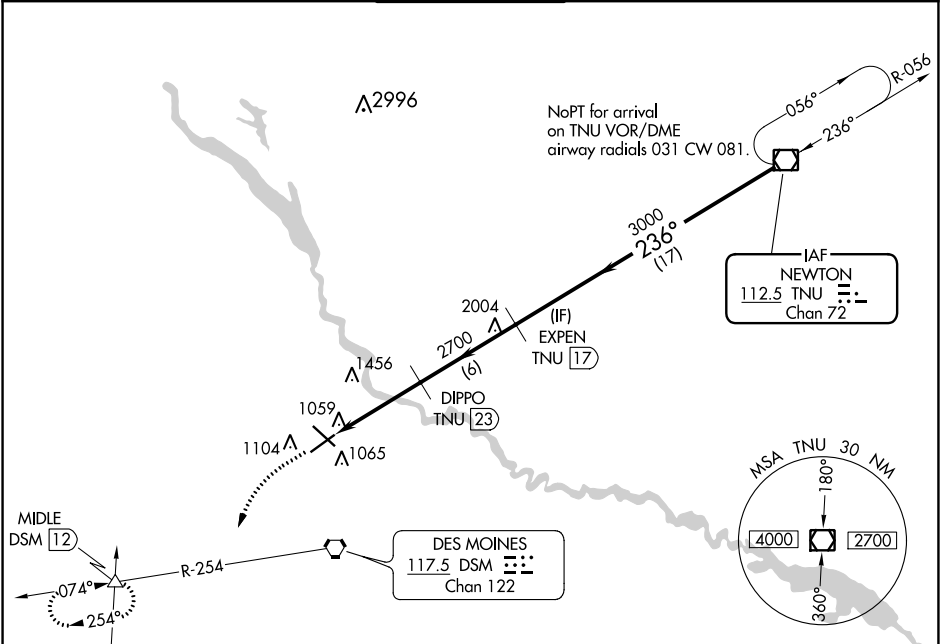
VOR/DME TNU	APP CRS	Rwy Idg	9004
112.5	236°	TDZE	939
Chan 72		Apt Elev	958

OLD

VOR RWY 23
DES MOINES INTL (DSM)

DME required.	MISSED APPROACH: Climb to 2000 then climbing left turn to 3000 on heading 200° and on DSM VORTAC R-254 direct MIDLE INT/DSM 12 DME and hold.
<div>⚠ Circling Rwy 5 NA at night.</div> <div>⚠ Rwy 23 helicopter visibility reduction below ¾ SM NA.</div>	

ATIS 119.55	DES MOINES APP CON 123.9 307.15	DES MOINES TOWER 118.3 257.8	GND CON 121.9 348.6	CLNC DEL 134.15 317.55
----------------	------------------------------------	---------------------------------	------------------------	---------------------------



2000	3000	DSM R-254	MIDLE	EXPEN TNU 17	TNU VOR/DME
↑	hdg 200°		△		
<div>DIPO TNU 23</div> <div>TNU 28.5</div> <div>≤ 2.95°</div> <div>TCH 56</div> <div>2700</div> <div>3000</div> <div>236°</div> <div>3000</div> <div>5.5 NM</div> <div>6 NM</div> <div>17 NM</div>					
CATEGORY	A	B	C	D	
S-23	1720-1 781 (800-1)	1720-1¼ 781 (800-1¼)	1720-2½ 781 (800-2½)	781 (800-2½)	
CIRCLING	1720-1 762 (800-1)	1720-1¼ 762 (800-1¼)	1720-2½ 762 (800-2½)	1760-2½ 802 (900-2½)	