

Flight Procedures Cover Page	Task Action: P-NOTAM	Task Type: IAP	Estimated Chart Date: 10/06/2022	APWS Task ID: 551E7E9AF089450ABC71E1DE8AD0D06D	APWS Project ID: 6ED6BC02A5C748D69EEBD83D2605072C
Procedure: LDA/DME RWY 29 AMDT 0F		Enroute: NO	Specialist: Sickels, Dale		Agreement Number:
Airport ID: KGJT			Airport City: GRAND JUNCTION		State: CO
Facility ID: ACD	Facility Type: LOC	Flight Inspection Remark Type:			
<div>Procedure Comments: Order 8260.3, Chapter 2, New Circling Criteria Applied. Contact Jason Kretschmer, AJV-A421, 405-954-4019</div> <div><div>Digitally signed by JASON KRETSCHMER Aug 22, 2022</div><div><div>QUALITY 47 CHECKED</div><div>QUALITY 38 CHECKED</div></div></div>					

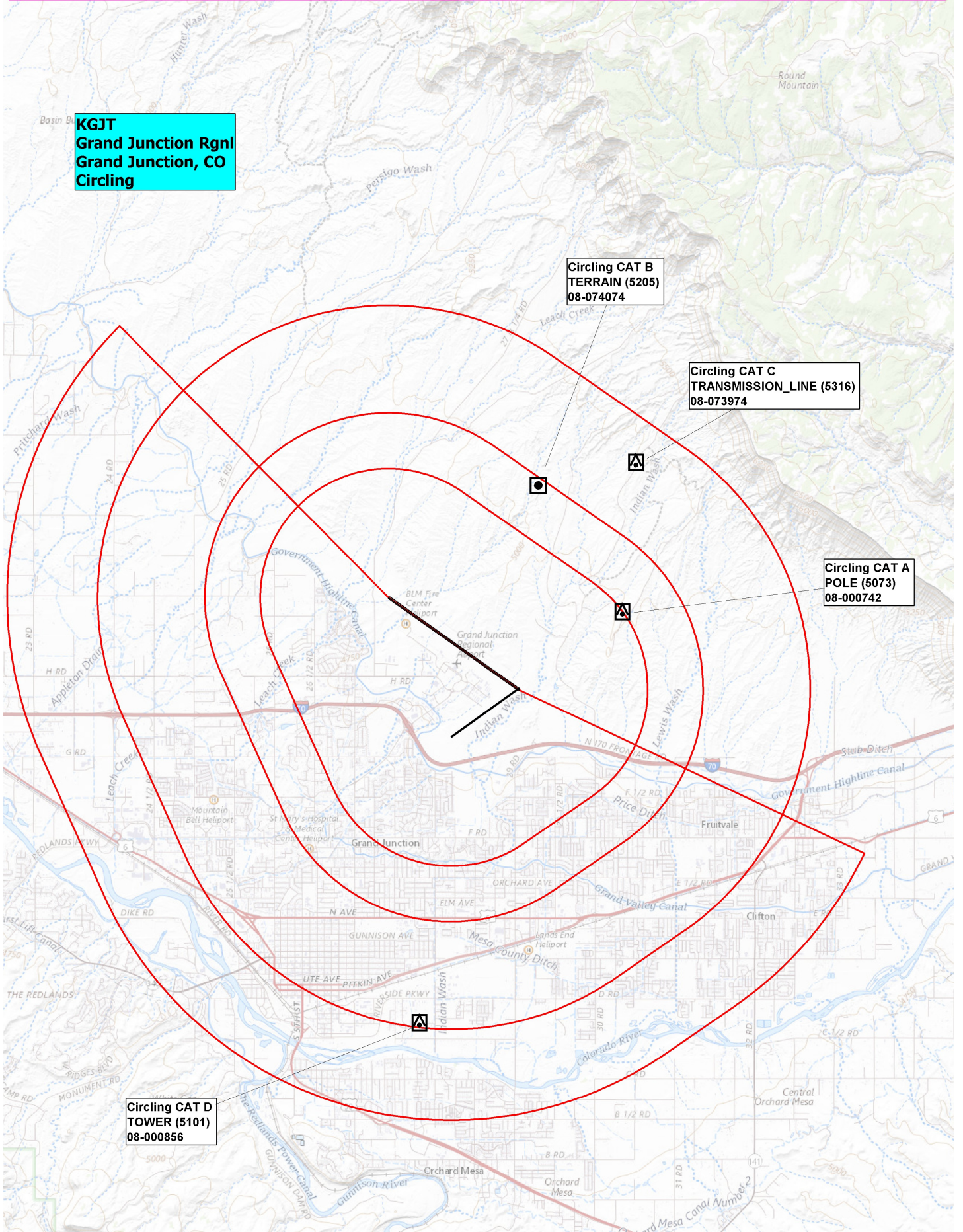
KGJT
Grand Junction Rgnl
Grand Junction, CO
Circling

Circling CAT B
TERRAIN (5205)
08-074074

Circling CAT C
TRANSMISSION_LINE (5316)
08-073974

Circling CAT A
POLE (5073)
08-000742

Circling CAT D
TOWER (5101)
08-000856



OLD

GRAND JUNCTION, COLORADO

AL-634 (FAA)

21280

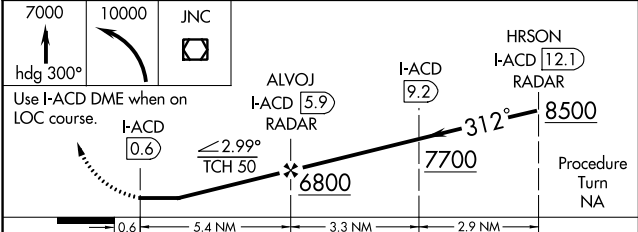
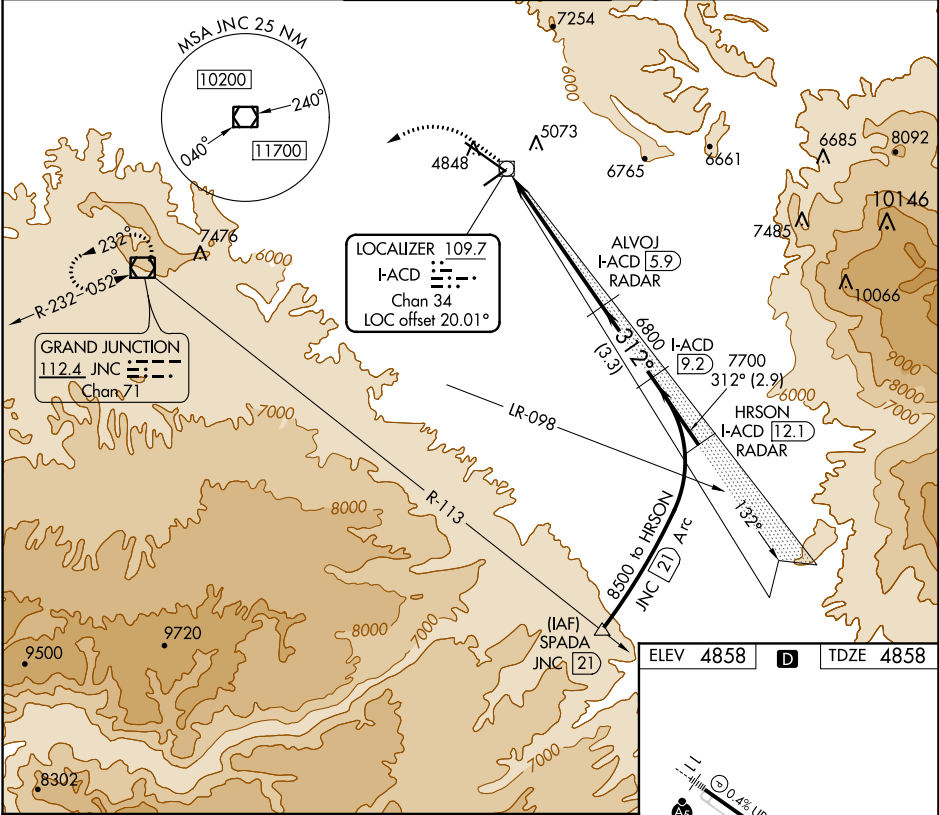
LOC/DME I-ACD	APP CRS	Rwy Idg	10503
109.7	312°	TDZE	4858
Chan 34		Apt Elev	4858

LDA/DME RWY 29

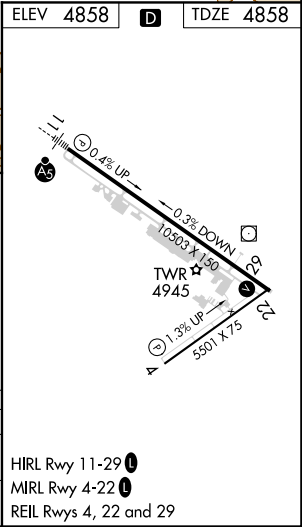
GRAND JUNCTION RGNL (GJT)

V A	Autopilot coupled approach NA inside 2.0 DME.	MISSED APPROACH: Climb to 7000 via heading 300°, then climbing left turn to 10000 direct JNC VOR/DME and hold.
----------------------	---	--

ATIS 118.55	DENVER APP CON * 119.7 317.4	GRAND JUNCTION TOWER * 118.1 (CTAF) 0 257.8	GND CON 121.7 257.8	UNICOM 122.95
-----------------------	--	---	-------------------------------	-------------------------



CATEGORY	A	B	C	D
S-29	5400-1 542 (600-1)	542 (600-1)	5400-1½ 542 (600-1½)	5400-1¾ 542 (600-1¾)
CIRCLING	5400-1 542 (600-1)	5420-1 562 (600-1)	5440-1½ 582 (600-1½)	5540-2¼ 682 (700-2¼)



GRAND JUNCTION, COLORADO
Orig-E 20JUN19

39°07'N-108°32'W

GRAND JUNCTION RGNL (GJT)
LDA/DME RWY 29

SW-1, 21 APR 2022 to 19 MAY 2022

SW-1, 21 APR 2022 to 19 MAY 2022