

<b>Flight Procedure Tracking Form</b>		<b>Action:</b> AMENDMENT	<b>Task Type:</b> IAP	<b>Date Open:</b> 10/18/2019	<b>Task #:</b> 2019101829557201001	<b>Request #:</b> 20191018295572
<b>Procedure:</b> APPROACH LOC RWY 16 AMDT 3E			<b>Airport ID:</b> KOPF	<b>Airport:</b> HANOVER COUNTY MUNI		<b>Reimbursable #:</b> NO
<b>City:</b> RICHMOND/ASHLAND	<b>ST:</b> VA	<b>GPS #:</b>	<b>Estimated Chart Date:</b> 03/26/2020		<b>FICO #:</b>	
<b>Fac ID:</b> N/A		<b>Fac. Type:</b>		<b>Specialist:</b> ANDRE TUCKER		
<b>Procedure Review</b>						
	<b>Rec'd</b>	<b>Rel'd</b>	<b>Full Name</b>	<b>Comments</b>		
<b>Lead:</b>	10/25/2019			<div style="display: flex; justify-content: space-between;"> <div> <b>QUALITY</b> 20 <b>CHECKED</b> </div> <div> <i>Digitally signed by</i>  <b>BRIAN J BICKETT</b>  Jan 04, 2020 </div> <div> <b>QUALITY</b> 26 <b>CHECKED</b> </div> </div>		
<b>QA:</b>						
<b>Liaison:</b>						
<b>Procedure Comments:</b> ENROUTE-NON <b>Remark Type:</b> INFORMATION  P-NOTAM  NEW CIRCLING AREAS  PROCESSED IAW AIRCRAFT OPERATIONS GROUP (AJW-33) MEMO, OCTOBER 3, 2018, SUBJECT: FLIGHT INSPECTION REVIEW NOT REQUIRED.  DAVE DANNER, 405-954-5077						

RICHMOND/ASHLAND, VIRGINIA

AL-5965 (FAA)

19115

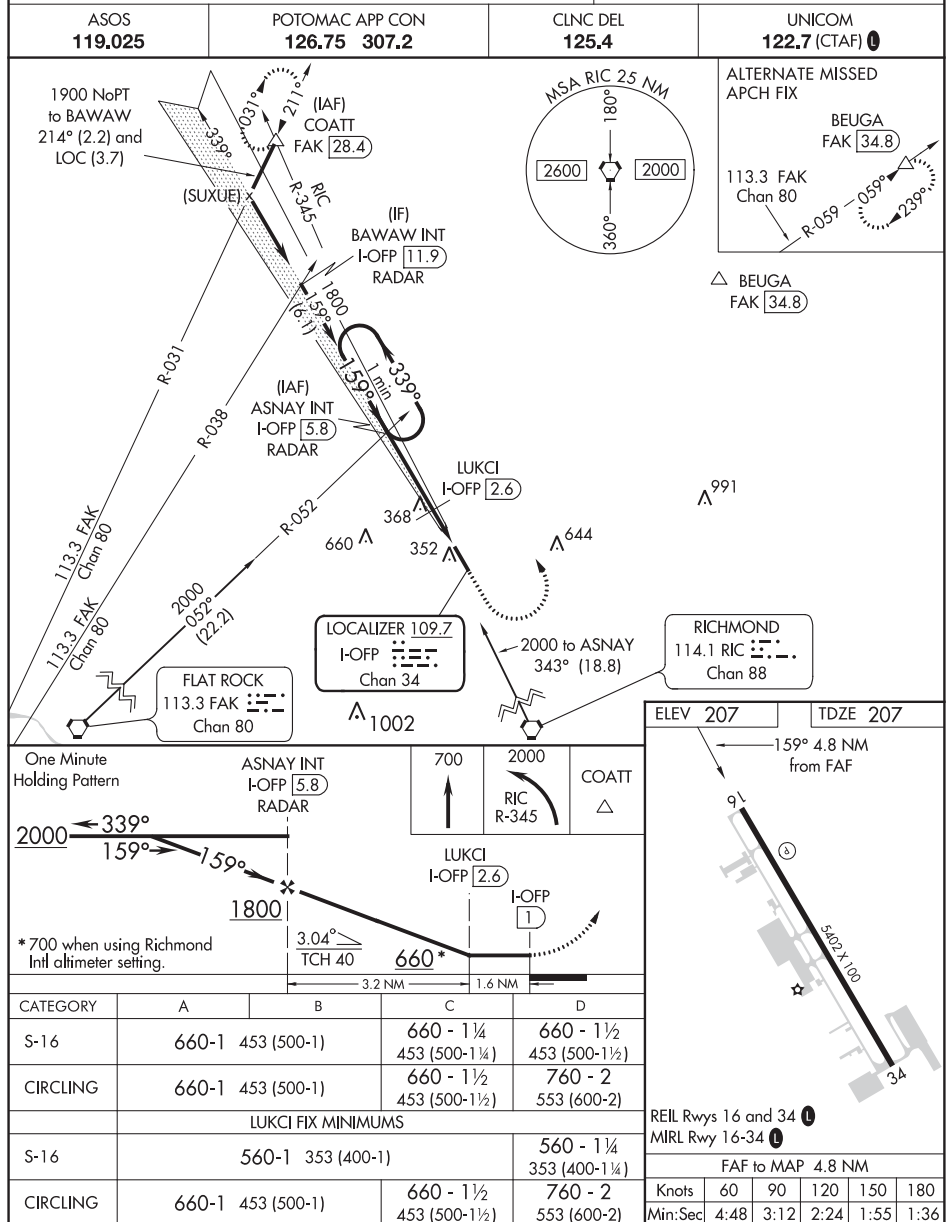
LOC/DME I-OPF <b>109.7</b> Chan <b>34</b>	APP CRS <b>159°</b>	Rwy Idg TDZE Apt Elev <b>5402</b> <b>207</b> <b>207</b>
---	------------------------	--

**OLD**

**LOC RWY 16**  
HANOVER COUNTY MUNI (OFP)

**NA** Helicopter visibility reduction below  $\frac{3}{4}$  SM NA. When local altimeter setting not received, use Richmond Intl altimeter setting and increase all MDAs 40 feet.

**MISSED APPROACH:** Climb to 700 then climbing left turn to 2000 via RIC VORTAC R-345 to COATT INT and hold.



RICHMOND/ASHLAND, VIRGINIA

Amdt 3D 05FEB15

37°42'N - 77°26'W

**LOC RWY 16**  
HANOVER COUNTY MUNI (OFP)

Map from KOFB RNAV RWY 34 showing new circling areas and controlling obstacles.

