

Flight Procedures Cover Page	Task Action: Abbreviated Amendment	Task Type: IAP	Estimated Chart Date: 12/02/2021	APWS Task ID: 54E708554E7A42E3B9B9194FE1397C5F	APWS Project ID: 6E8A4AF938FB4533AE4D2B3EB6D48BF4
Procedure: VOR RWY 17 AMDT 13B		Enroute: NO	Specialist: Dougherty, Steven		Agreement Number:
Airport ID: KWDG			Airport City: ENID		State: OK
Facility ID: ODG	Facility Type: VOR_DME	Flight Inspection Remark Type:			
<p>Procedure Comments:</p> <p>REMOVE IFI FEEDER.</p> <p>PENDING DATA USED.</p> <p>CONTACT BEV BORDY, AJV-A411, 405-954-8293.</p>					



OLD

ENID, OKLAHOMA

AL-136 (FAA)

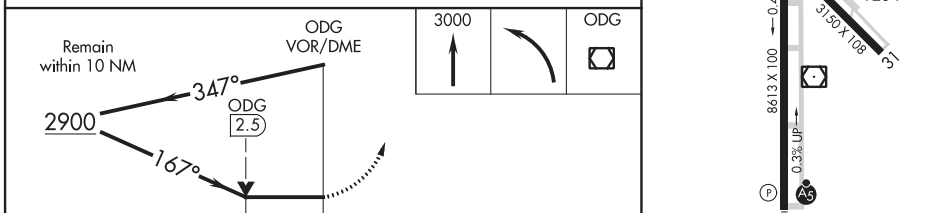
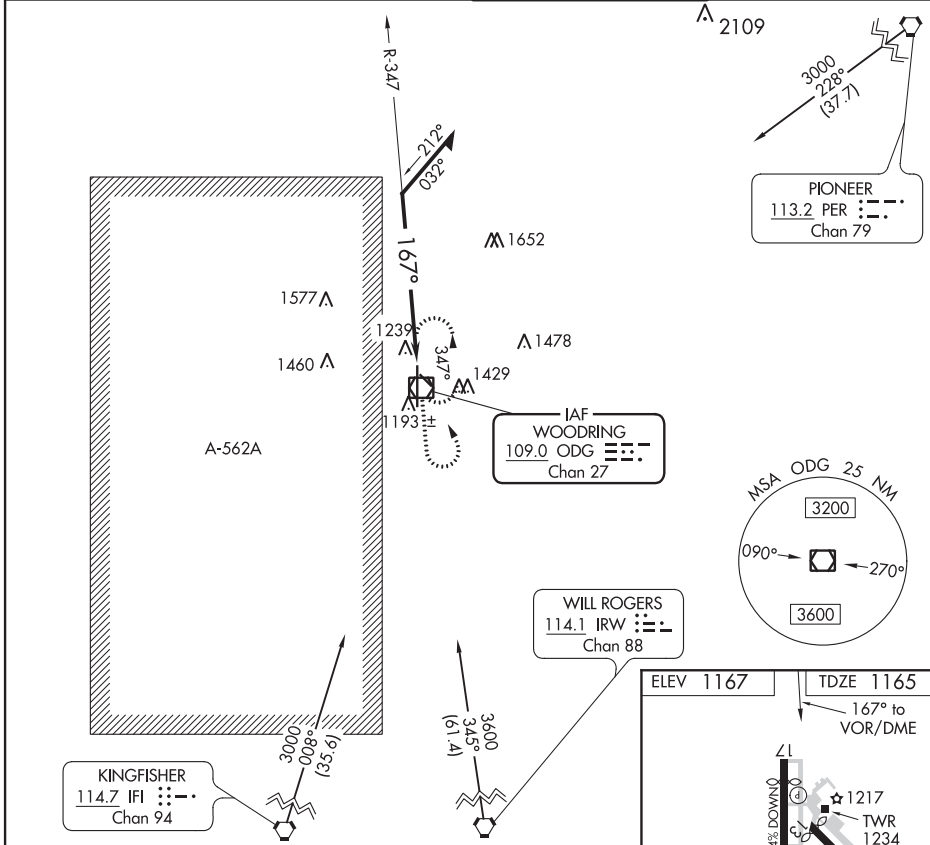
21112

VOR/DME ODG 109.0 Chan 27	APP CRS 167°	Rwy Idg TDZE 1165 Apt Elev 1167
---	------------------------	---

VOR RWY 17 ENID WOODRING RGNL (WDG)

⚠ Circling Rwy 13 NA at night. MISSED APPROACH: Climb to 3000 then left turn direct ODG VOR/DME and hold.

AWOS-3 120.625	VANCE APP CON ★ 121.3 346.325	WOODRING TOWER ★ 118.9 (CTAF) 0 257.95	GND CON 121.925
--------------------------	---	---	---------------------------



CATEGORY	A	B	C	D
S-17	1800-1 635 (700-1)	1800-1 635 (700-1)	1800-1 635 (700-1)	1800-2 635 (700-2)
C CIRCLING	1800-1 633 (700-1)	1800-1 633 (700-1)	1800-1 633 (700-1)	1800-2 633 (700-2)

ENID, OKLAHOMA

Amdt 13A 26MAR20

36°23'N-97°47'W

ENID WOODRING RGNL (WDG)

VOR RWY 17

SC-1, 20 MAY 2021 to 17 JUN 2021

SC-1, 20 MAY 2021 to 17 JUN 2021