

Flight Procedures Cover Page	Task Action: P-NOTAM	Task Type: IAP	Estimated Chart Date: 12/02/2021	APWS Task ID: 54DBF2880F3D4E5CBB3DD6D69E68C3E0	APWS Project ID: 172BFF579491461AAD19F88E9C7880C0
Procedure: VOR RWY 17 AMDT 3B		Enroute: NO	Specialist: Brooks, Charles		Agreement Number:
Airport ID: KDUG			Airport City: DOUGLAS BISBEE		State: AZ
Facility ID:	Facility Type:	Flight Inspection Remark Type:			
<p>Procedure Comments: P-NOTAM</p> <p>CIRCLING RADII INCREASE.</p> <p>CONTACT JASON KRETSCHMER, AJV-A421, 405-954-4019</p> <p style="text-align: center;"><i>Digitally signed by</i> <b>JASON KRETSCHMER</b> Oct 15, 2021</p>					

QUALITY  
9  
CHECKED

QUALITY  
47  
CHECKED

OLD

DOUGLAS BISBEE, ARIZONA

AL-486 (FAA)

20310

VORTAC DUG	APP CRS	Rwy Idg	6430
108.8	140°	TDZE	4125
Chan 25		Apt Elev	4150

**VOR RWY 17**  
BISBEE-DOUGLAS INTL (DUG)



MISSED APPROACH: Climbing right turn  
to 8000 in DUG VORTAC holding pattern.

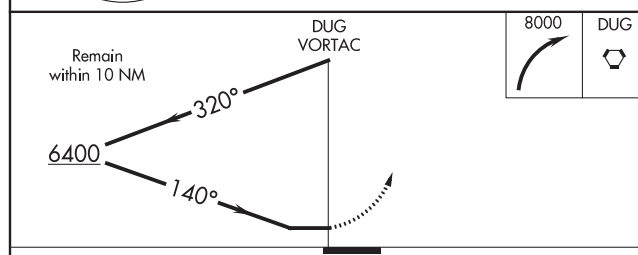
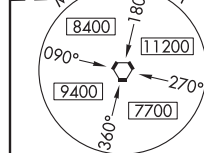
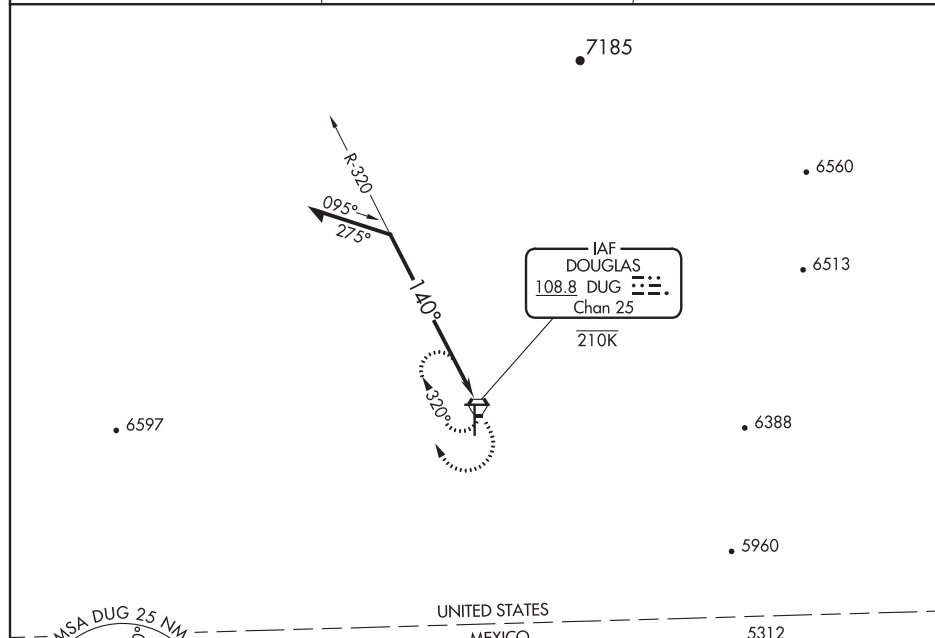
ASOS  
119.275

ALBUQUERQUE CENTER  
134.45 327.15

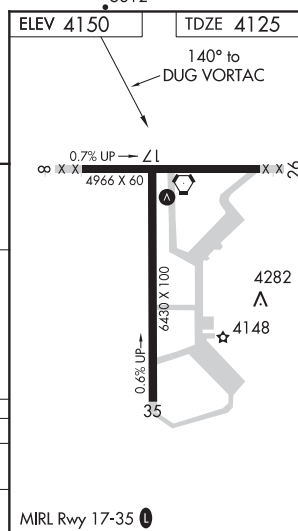
UNICOM  
123.0 (CTAF) 0

SW-4, 17 JUN 2021 to 15 JUL 2021

SW-4, 17 JUN 2021 to 15 JUL 2021



CATEGORY	A	B	C	D
S-17	4900-1 775 (800-1)	4900-1¼ 775 (800-1¼)	NA	
CIRCLING	4900-1 750 (800-1)	4900-1¼ 750 (800-1¼)	4900-2½	750 (800-2½)



DOUGLAS BISBEE, ARIZONA  
Amdt 3A 28APR16

31°28'N-109°36'W

BISBEE-DOUGLAS INTL (DUG)  
**VOR RWY 17**

