

Flight Procedures Cover Page	Task Action: FLIGHT CHECK	Task Type: IAP	Estimated Chart Date: 10/05/2023	APWS Task ID: 54CC4D141A93415BB1F1D21E02078612	APWS Project ID: 81461F07E26643F5B398B47F0B4785B7
Procedure: RNAV (GPS) RWY 4 ORIG		Enroute: NO	Specialist: Schones, Christopher		Agreement Number:
Airport ID: KAXN			Airport City: ALEXANDRIA		State: MN
Facility ID:	Facility Type:	Flight Inspection Remark Type: New FC Slot			
<div>Procedure Comments: ACTIVE DATA USED FOR KAXN AIRPORT AND RUNWAY.  CONTACT: CASIMIR TABAKA (405) 954-7931</div> <div><div>QUALITY 10 CHECKED</div><div>QUALITY 38 CHECKED</div></div>					

FIPC BASIC FORM									
PROCEDURE: RNAV (GPS) RWY 4 ORIG				AIRPORT NAME: CHANDLER FLD		AIRPORT ID: KAXN		SPECIAL CONTROL NO: BG-08-002-23	
FAC ID: KAXN04			CITY: ALEXANDRIA			ST: MN		ORIG CHART DATE: 10/05/2023	
DFL TYPE: PROC/S	THIRD PARTY: <input type="checkbox"/> YES	EST. TIME ON SITE: 0.4	REIMB. NUMBER: AC0598		PTS TASK ID: 54CC4D141A93415BB1F1D21E02078612				
PREFLIGHT NOTES									
REVIEWER:						DATE:			
COMMENTS:						CHECK ONE: <input type="checkbox"/> FLT CK REQ <input type="checkbox"/> NFCR <input type="checkbox"/> REJECT			
								YES	NO
						CPV COMPLETE?		X	
PROCEDURE RESULTS									
INSPECTION DATE: 08/15/2023		CREW #: VN329	N #: N75	INSTRUMENT PROCEDURE STATUS: <input checked="" type="checkbox"/> SAT <input type="checkbox"/> SAT W/CHANGES <input type="checkbox"/> UNSAT			ARINC CODING: <input checked="" type="checkbox"/> SAT <input type="checkbox"/> SAT/GOLD <input type="checkbox"/> UNSAT		
FLIGHT INSPECTOR SIGNATURE: glen b freeman @ 08/15/2023 20:19			PRINTED NAME: FREEMAN, GLEN BURSON					NOTAM INITIATED? <input type="checkbox"/> YES <input checked="" type="checkbox"/> NO	
FLIGHT INSPECTOR REMARKS: BG-08-002-23, CHANDLER FLD, ALEXANDRIA, MN, RNAV (GPS) RWY 4, ORIG, Completed SAT.									
IN-FLIGHT OBSTACLE REPORT									
OBSTRUCTION ID #:	COORDINATES OR LOCATION:		GNSS ALTITUDE (MSL):		BAROMETRIC ALTITUDE (MSL):		HEIGHT ABOVE GROUND LEVEL:		

ALEXANDRIA, MINNESOTA

AL-14 (FAA)

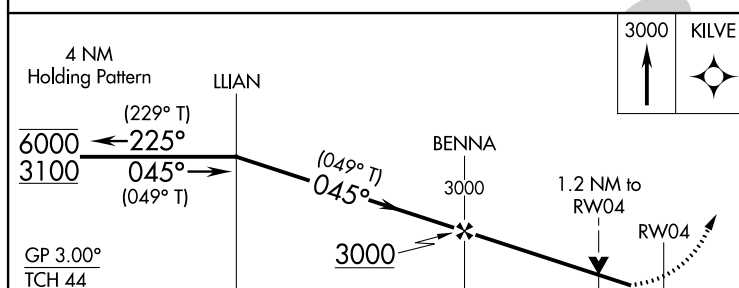
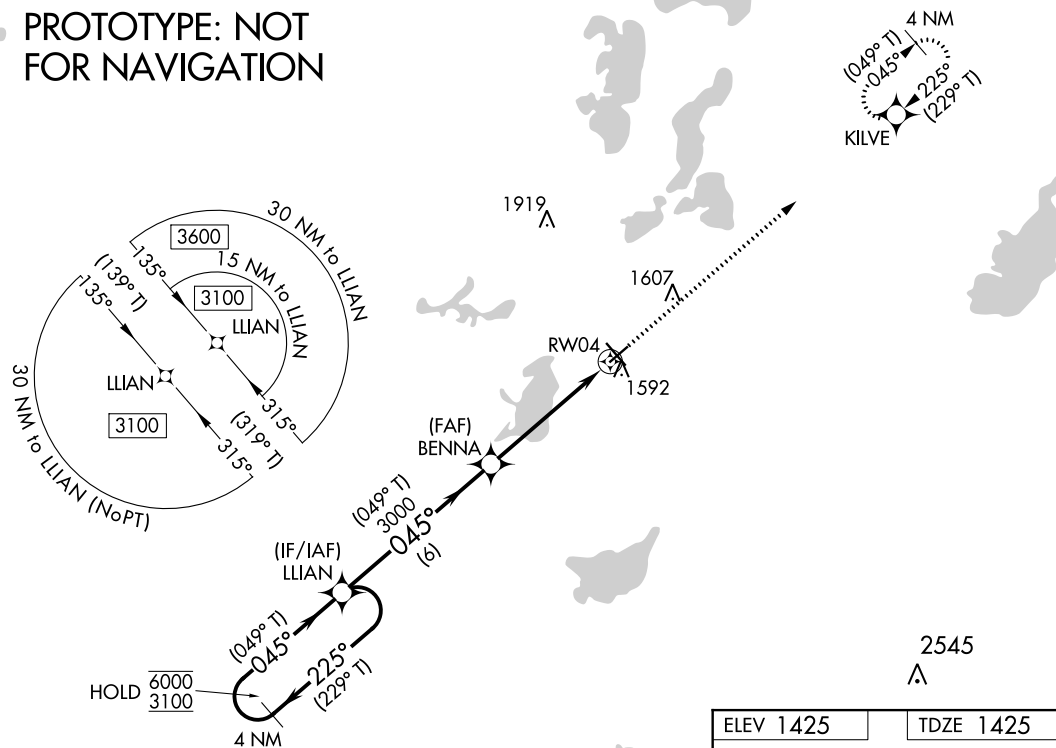
FIG

WAAS CH <b>90245</b> <b>W04A</b>	APP CRS <b>045°</b>	Rwy Idg <b>4098</b> TDZE <b>1425</b> Apt Elev <b>1425</b>
----------------------------------------	------------------------	-----------------------------------------------------------------

# **RNAV (GPS) RWY 4** CHANDLER FLD (A.XN)

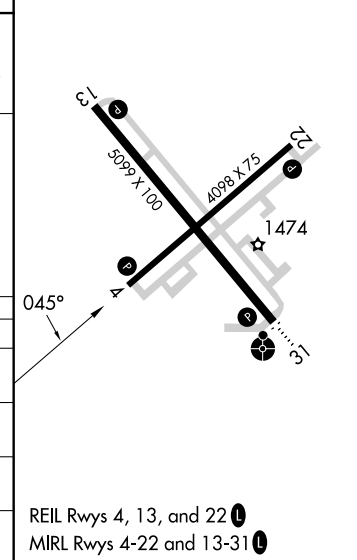
RNP APCH - GPS.		MISSED APPROACH: Climb to 3000 direct KILVE and and hold.
<div><div><div></div><div></div></div></div>	Rwy 4 helicopter visibility reduction below ¾ SM NA. For uncompensated Baro-VNAV systems, LNAV/VNAV NA below -22°C or above 54°C.	
ASOS 118.375	MINNEAPOLIS CENTER 126.1 269.2	UNICOM 123.0 (CTAF) 0

**PROTOTYPE: NOT  
FOR NAVIGATION**



ELEV 1425	TDZE 1425
-----------	-----------

CATEGORY	A	B	C	D
LPV DA	1675-1	250 (300-1)		
LNAV/VNAV DA	1826-1½	401 (500-1½)		
LNAV MDA	1860-1 435 (500-1)	1860-1¼ 435 (500-1¼)		
CIRCLING	1900-1 475 (500-1)	1940-1½ 515 (600-1½)	2000-2 575 (600-2)	



**AUTOMATED AL-14 RNAV (GPS) RWY 4**

NC-1

22 MAY 2023

COMPILER: CG

REVIEWER:

DBL CHKR:

EFF: FIG

ALEXANDRIA, MINNESOTA

Orig FIG

45°52'N-95°24'W

CHANDLER FLD (A.XN)

# **RNAV (GPS) RWY 4**

KAXN  
ALEXANDRIA, MN  
CHANDLER FLD  
RNAV (GPS) RWY 4, ORIG  
LNAV  
1:500K

KILVE MAH  
TERRAIN+AAO (1710)

LNAV BENNA to KAXN:RW04:AER  
TOWER (1592) 27-022134

Intermediate LLIAN to BENNA  
TERRAIN+AAO (1683)

LLIAN HILPT  
TERRAIN+AAO (1697)

BENNA

RW04

Missed Level Surface  
TOWER (1715) 27-001210

1" = 41666 feet

KAXN  
ALEXANDRIA, MN  
CHANDLER FLD  
RNAV (GPS) RWY 4, ORIG  
LNAV  
1:500K

KILVE MAH  
TERRAIN+AAO (1710)

KILVE

LNAV BENNA to KAXN:RW04:AER  
TOWER (1592) 27-022134

Intermediate LLIAN to BENNA  
TERRAIN+AAO (1683)

LLIAN HILPT  
TERRAIN+AAO (1697)

LLIAN

BENNA

RW04

Missed Level Surface  
TOWER (1715) 27-001210

1" = 41666 feet

KAXN  
ALEXANDRIA, MN  
CHANDLER FLD  
RNAV (GPS) RWY 4, ORIG  
LNAV  
1:500K

KILVE MAH  
TERRAIN+AAO (1710)

KILVE

LNAV BENNA to KAXN:RW04:AER  
TOWER (1592) 27-022134

Intermediate LLIAN to BENNA  
TERRAIN+AAO (1683)

LLIAN HILPT  
TERRAIN+AAO (1697)

LLIAN

BENNA

RW04

Missed Level Surface  
TOWER (1715) 27-001210

KAXN  
ALEXANDRIA, MN  
CHANDLER FLD  
RNAV (GPS) RWY 4, ORIG  
LNAV  
1:500K

KILVE MAH  
TERRAIN+AAO (1710)

LNAV BENNA to KAXN:RW04:AER  
TOWER (1592) 27-022134

Intermediate LLIAN to BENNA  
TERRAIN+AAO (1683)

LLIAN HILPT  
TERRAIN+AAO (1697)

BENNA

RW04

Missed Level Surface  
TOWER (1715) 27-001210

KAXN  
ALEXANDRIA, MN  
CHANDLER FLD  
RNAV (GPS) RWY 4, ORIG  
LNAV  
1:500K

KILVE MAH  
TERRAIN+AAO (1710)

LNAV BENNA to KAXN:RW04:AER  
TOWER (1592) 27-022134

Intermediate LLIAN to BENNA  
TERRAIN+AAO (1683)

LLIAN HILPT  
TERRAIN+AAO (1697)

BENNA

RW04

Missed Level Surface  
TOWER (1715) 27-001210

1" = 41666 feet

KAXN  
ALEXANDRIA, MN  
CHANDLER FLD  
RNAV (GPS) RWY 4, ORIG  
LNAV  
1:500K

KILVE MAH  
TERRAIN+AAO (1710)

KILVE

LNAV BENNA to KAXN:RW04:AER  
TOWER (1592) 27-022134

Intermediate LLIAN to BENNA  
TERRAIN+AAO (1683)

LLIAN HILPT  
TERRAIN+AAO (1697)

LLIAN

BENNA

RW04

Missed Level Surface  
TOWER (1715) 27-001210



