

Flight Procedures Cover Page	Task Action: FLIGHT CHECK	Task Type: IAP	Estimated Chart Date: 02/20/2025	APWS Task ID: 546EF20492E649AFA7C90C6B646619EA	APWS Project ID: E505BB63954F4C7ABFB64BBCD8B6E96E
Procedure: RNAV (GPS) RWY 14 AMDT 0E		Enroute: NO	Specialist: Tyler, George		Agreement Number:
Airport ID: K82			Airport City: SMITH CENTER		State: KS
Facility ID:	Facility Type:	Flight Inspection Remark Type: New FC Slot			
<div>Procedure Comments:</div> <div>PENDING AIRNAV DATA UTILIZED FOR KK82 AND RWYS.</div> <div>RWY 18/36 IS BEING DECOMMISSIONED REQUIRING UPDATED CIRCLING OEA.</div> <div>VOR MON SUPPORTING TKO DECOMMISSIONING.</div> <div>LNAV 7:1 OBSTACLE UPDATED TO 2080 AAO 395145.00N/0985039.00W.</div> <div>LNAV controlling obstacle updated to 2054 AAO 395021N/0985012W.</div> <div>CIRCLING CAT A/B UPDATED OBSTACLE DATA.</div> <div>MISSED LEVEL SURFACE OBSTACLE UPDATED TO AAO 2025 394112.00N/0984230.00W.</div> <div>CRC REMAINDER UPDATED TO DA7A9E51</div> <div>CONTACT DAVID DANNER, AJV-A421, 405-954-5077.</div> <div><div>QUALITY 33 CHECKED</div><div>QUALITY 10 CHECKED</div></div>					

SMITH CENTER, KANSAS

AL-6696 (FAA)

FIG

WAAS CH 78335 W14A	APP CRS 143°	Rwy Idg TDZE Apt Elev	4400 1798 1800
--	------------------------	-----------------------------	---

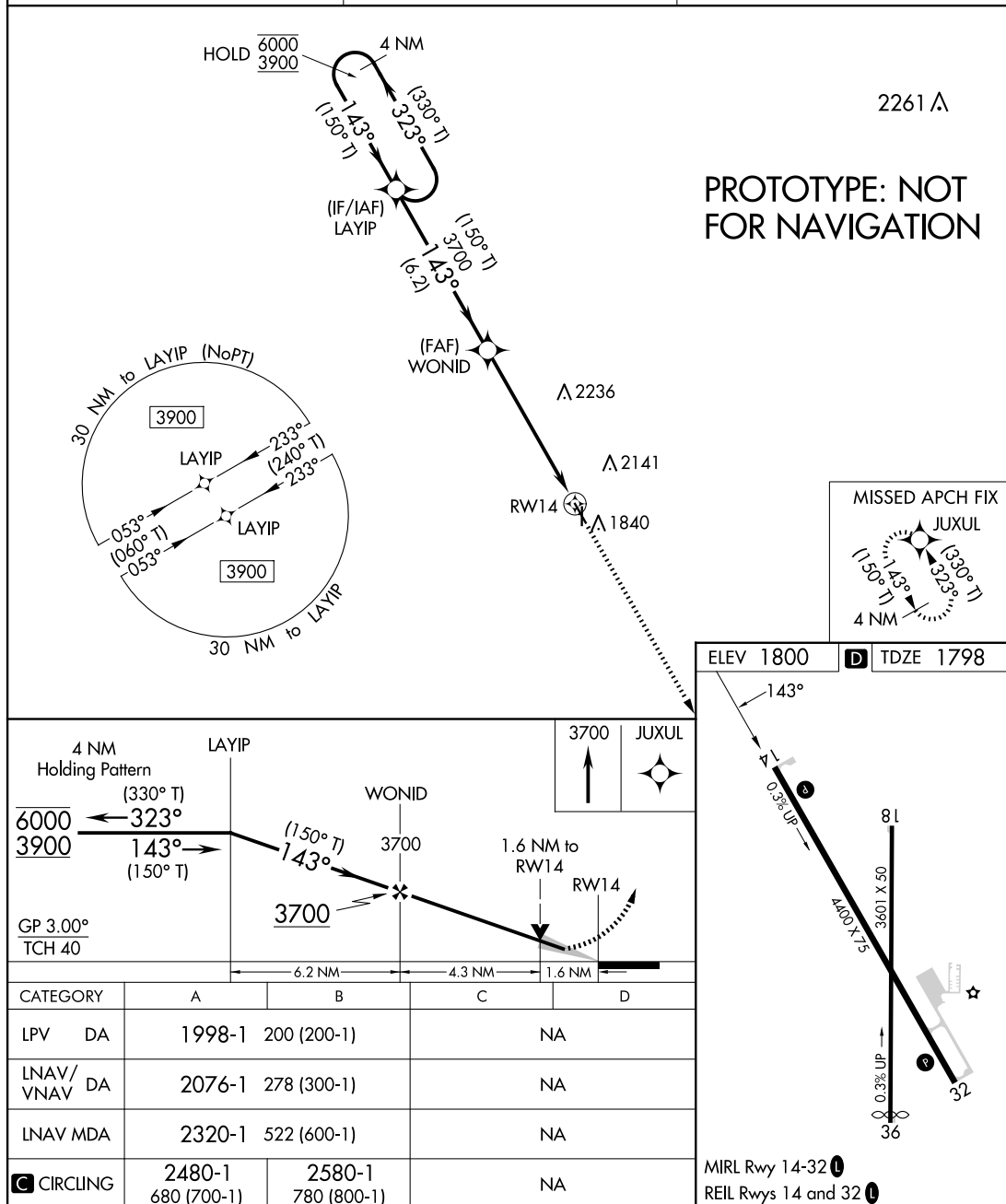
RNAV (GPS) RWY 14

SMITH CENTER MUNI (K82)

RNP APCH - GPS.

⚠ For uncompensated Baro-VNAV systems, LNAV/VNAV NA below -18°C or above 54°C. Baro-VNAV and VDP NA when using CNK altimeter setting. When local altimeter setting not received, use CNK altimeter setting: increase LPV DA to 2172 feet; increase LNAV/VNAV DA to 2250 and all visibilities $\frac{3}{8}$ SM; increase all MDAs 180 feet and Circling all Cats visibility $\frac{1}{2}$ SM.

MISSED APPROACH: Climb to 3700 direct JUXUL and hold.

AWOS-3PT
118.45MINNEAPOLIS CENTER
119.4 278.8UNICOM
122.8 (CTAF) 0

AUTOMATED AL-6696 RNAV (GPS) RWY 14

NC-2
10 OCT 2024
COMPILER: CG
REVIEWER:
DBL CHKR:
EFF: FIG

SMITH CENTER, KANSAS

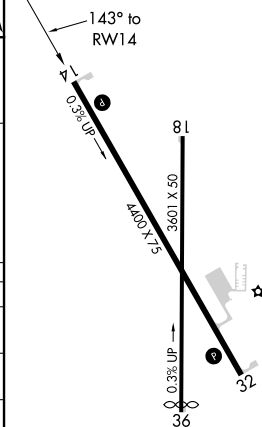
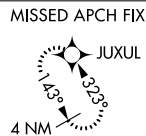
Orig-E FIG

39°46'N-98°48'W

SMITH CENTER MUNI (K82)
RNAV (GPS) RWY 14

RNAV (GPS) RWY 14
SMITH CENTER MUNI (K82)

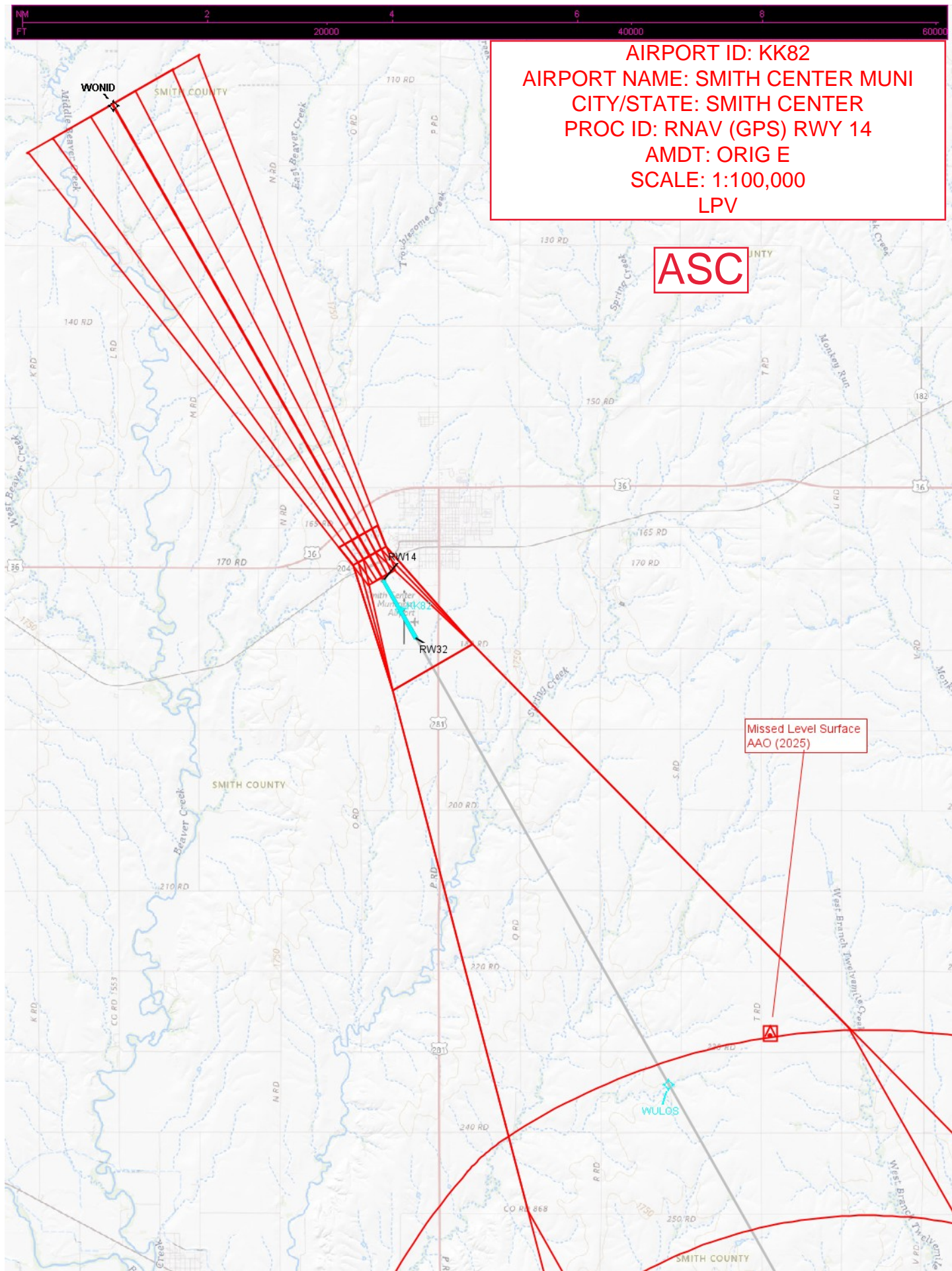
MISSED APPROACH:
Climb to 3700 direct
JUXUL and hold.

UNICOM
122.8 (CTAF) **L**

MIRL Rwy 14-32 **L**
REIL Rwy 14 and 32 **L**

NC-2, 13 JUN 2024 to 11 JUL 2024

NC-2, 13 JUN 2024 to 11 JUL 2024



AIRPORT ID: KK82
AIRPORT NAME: SMITH CENTER MUNI
CITY/STATE: SMITH CENTER
PROC ID: RNAV (GPS) RWY 14
AMDT: ORIG E
SCALE: 1:100,000
LPV

ASC

Missed Level Surface
AAO (2025)

WULOS

