

Flight Procedures Cover Page	Task Action: P-NOTAM	Task Type: IAP	Estimated Chart Date: 12/26/2024	APWS Task ID: 53ADC7A5223B4CBB817AB426831CF3F1	APWS Project ID: C2225B526DA94104BC50F8486CC6CA3C
Procedure: RNAV (GPS) RWY 6 AMDT 1F		Enroute: NO	Specialist: Smart, Phillip		Agreement Number:
Airport ID: KPYM			Airport City: PLYMOUTH		State: MA
Facility ID:	Facility Type:	Flight Inspection Remark Type:			
<div>Procedure Comments:</div> <div>P-NOTAM CREATED RESTORING NIGHT OPS</div> <div>Processed IAW Technical Support Group (AJF-17) Memo dated 07/07/2021 Guidance for Procedural Changes Requiring Flight Inspection/Validation</div> <div>CONTACT ROBERT HAMILTON 405-954-4608</div> <div><div>QUALITY 41 CHECKED</div><div><div>QUALITY 32 CHECKED</div><div>Digitally signed by PABLO ORTIZ-JR Jul 22, 2024</div></div></div>					

OLD

PLYMOUTH, MASSACHUSETTS

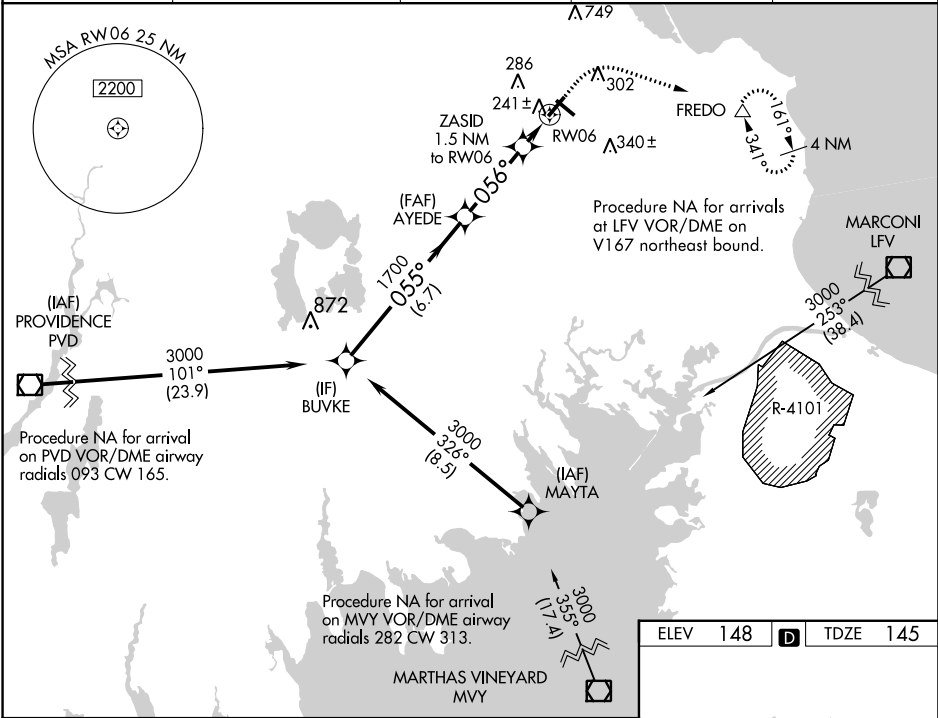
24025

WAAS CH 40422 W06A	APP CRS 056°	Rwy Idg 4650 TDZE 145 Apt Elev 148
----------------------------------------	------------------------	---------------------------------------------------------------

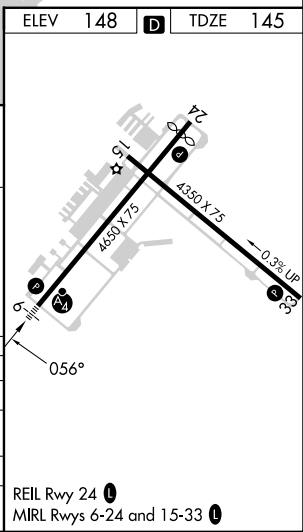
RNAV (GPS) RWY 6
PLYMOUTH MUNI (PYM)

RNP APCH - GPS. ▼ Circling Rwy 15, 24 NA at night. Rwy 6 helicopter visibility reduction below $\frac{3}{4}$ SM NA. ▲ For uncompensated Baro-VNAV systems, LNAV/VNAV NA below -17°C or above 54°C . For inop ALS, increase LPV all Cats visibility to $\frac{1}{2}$ SM and LNAV/VNAV all Cats visibility to $\frac{1}{2}$ SM.	MALSF MALSF	MISSED APPROACH: Climb to 640 then climbing right turn to 1900 direct FREDO and hold.
------------------------------------------------------------------------------------------------------------------------------------------------------------------------------------------------------------------------------------------------------------------------------------------------------------------------------------------------------------------------	----------------	------------------------------------------------------------------------------------------

ASOS 135.625	BOSTON APP CON ★ 118.2 284.6	CLNC DEL 127.75	UNICOM 122.725 (CTAF)	122.9 0
------------------------	----------------------------------------	---------------------------	---------------------------------	----------------



VGSI and RNAV glidepath not coincident (VGSI Angle 3.00/TCH 40).			
BUKE			
3000			
055°			
1700			
056°			
ZASID 1.5 NM to RW06			
660			
RW06			
GP 3.00° TCH 50			
6.7 NM			
3.3 NM			
1.5 NM			
A B C D			
LPV	DA	436- $\frac{3}{4}$ 291 (300- $\frac{3}{4}$)	NA
LNAV/VNAV	DA	426- $\frac{3}{4}$ 281 (300- $\frac{3}{4}$)	NA
LNAV	MDA	500- $\frac{3}{4}$ 355 (400- $\frac{3}{4}$)	NA
CIRCLING	620-1 472 (500-1)	640-1 492 (500-1)	760-1 $\frac{3}{4}$ 612 (700-1 $\frac{3}{4}$) NA



PLYMOUTH, MASSACHUSETTS
Amdt 1E 30NOV23

41°55'N-70°44'W

PLYMOUTH MUNI (PYM)
RNAV (GPS) RWY 6

NE-1, 13 JUN 2024 to 11 JUL 2024

NE-1, 13 JUN 2024 to 11 JUL 2024