



Flight Procedures Cover Page	Task Action: P-NOTAM	Task Type: IAP	Estimated Chart Date: 04/22/2021	APWS Task ID: 52C508766E43485CB300E65802B89BBF	APWS Project ID: 70BAC507CE304590B7BF84117D0374ED
Procedure: COPTER ILS OR LOC RWY 10R AMDT 1B		Enroute: NO	Specialist: Ciarlone, Mark		Agreement Number:
Airport ID: KFCM			Airport City: MINNEAPOLIS		State: MN
Facility ID:	Facility Type:	Flight Inspection Remark Type:			
<p>Procedure Comments: PROCESSED IAW AIRCRAFT OPERATIONS GROUP (AJF-10) MEMO, APRIL 29, 2020 SUBJECT: FLIGHT INSPECTION REVIEW NOT REQUIRED.</p> <p>REMOVAL OF NOTE: NIGHT LANDING: RWY 18/36 NA - 20:1 VGSI MITIGATION TO RWYS 18/36 VIA T-NOTAM 0/0079 DOES NOT APPLY BECAUSE HELICOPTER IAPS DO NOT HAVE CIRCLING CRITERIA.</p> <p>ACTIVE DATA USED.</p> <p>CONTACT: ALLAN WILL, AJV-A423 MANAGER, 405.954.6103.</p>					

Digitally signed by
MARY MCDONALD
 Jan 28, 2021





LOC FCM 109.7	APP CRS 098°	Rwy Idg TDZE Apt Elev	5000 905 906
-------------------------	------------------------	-----------------------------	---

COPTER ILS or LOC RWY 10R
FLYING CLOUD (FCM)

T For inoperative MALS/R, increase visibility to ½ mile. When local
A altimeter setting not received, use Minneapolis-St Paul Intl-Wold
Chamberlain altimeter setting and increase DA 34 feet and all
MDA 40 feet. Night Landing: Rwy 18/36 NA.

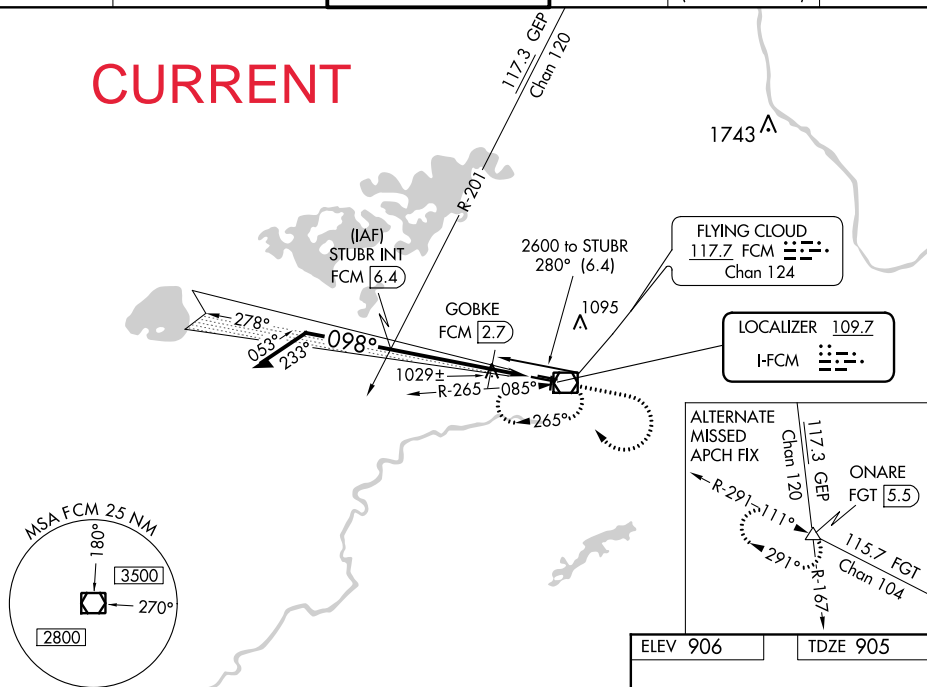
MALSR



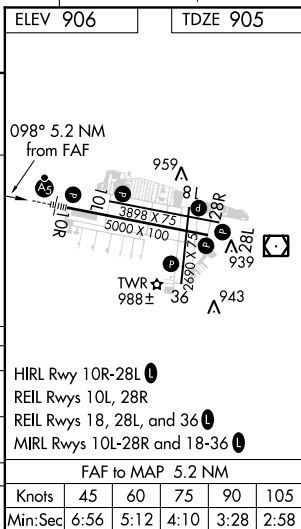
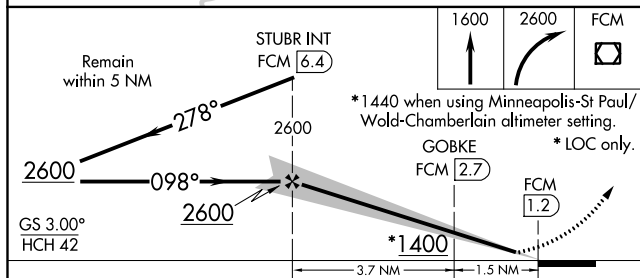
MISSED APPROACH: Climb to 1600 then climbing right turn to 2600 direct FCM VOR/DME and hold, continue climb-in-hold to 2600.

ATIS 124.9	MINNEAPOLIS APP CON 134.7 284.7	FLYING CLOUD TOWER ★ 119.15 (CTAF) 0	GND CON 121.7	CLNC DEL 121.7 (When twr closed)	UNICOM 122.95
----------------------	---	--	-------------------------	---	-------------------------

CURRENT



NC-1, 13 AUG 2020 to 10 SEP 2020



CATEGORY	COPTER	B	C	D
H-ILS 10R	1105- $\frac{1}{4}$ 200 (200- $\frac{1}{4}$)		NA	
H-LOC 10R	1400- $\frac{1}{4}$ 495 (500- $\frac{1}{4}$)		NA	
GOBKE FIX MINIMUMS				
H-LOC 10R	1280- $\frac{1}{4}$ 375 (400- $\frac{1}{4}$)		NA	

MINNEAPOLIS, MINNESOTA
Amdt 1A 08JAN15

44°50'N-93°28'W

FLYING CLOUD (FCM)

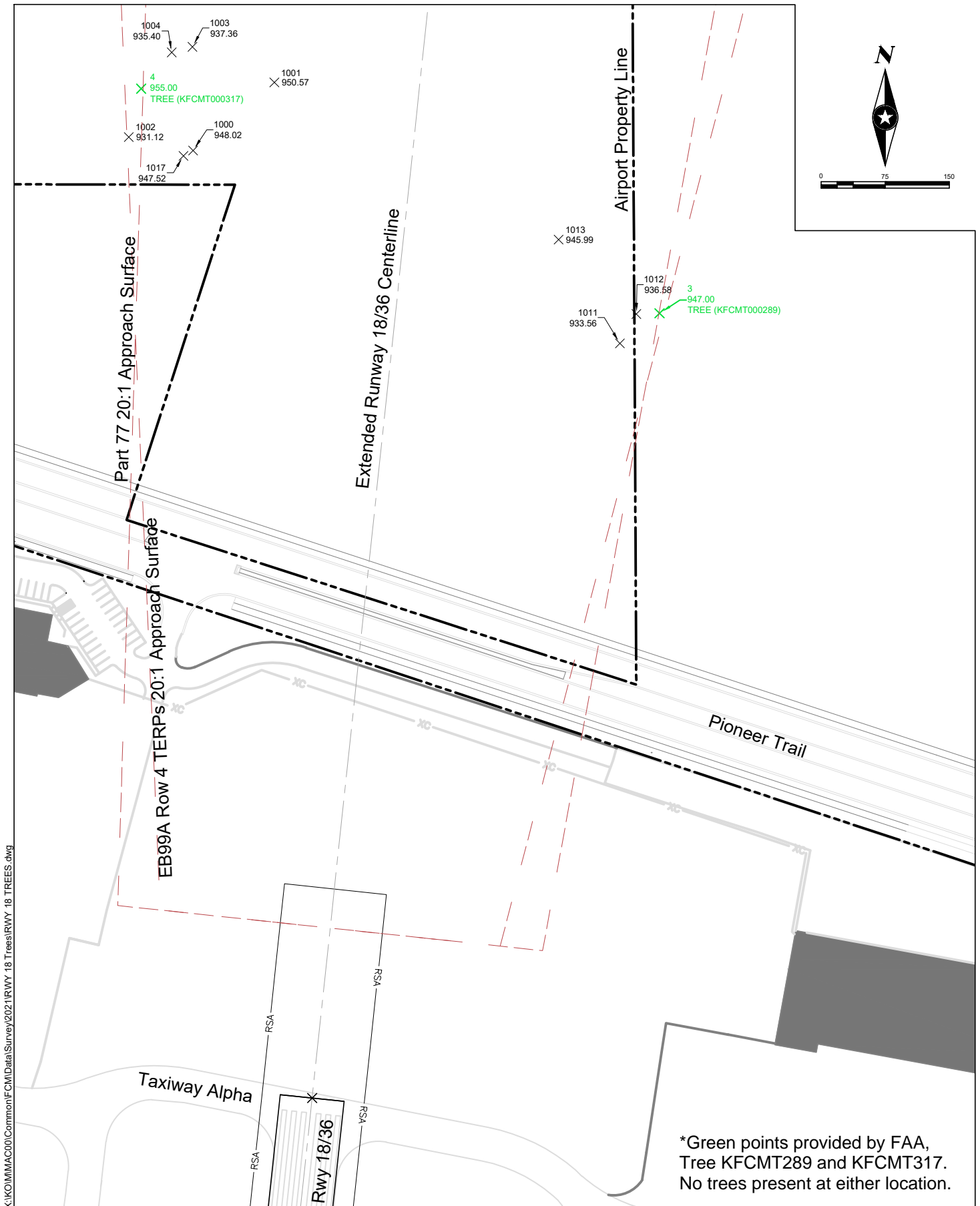
COPTER ILS or LOC RWY 10R



Runway 18 Tree 20:1 Penetrations

Flying Cloud Airport (FCM)
Eden Prairie, Minnesota

May 2021



X:\K01MMAC00\Common\FCM\Data\Survey\2021\RWY 18 Trees\RWY 18 TREES.dwg