

Flight Procedures Cover Page	Task Action: P-NOTAM	Task Type: IAP	Estimated Chart Date: 12/30/2021	APWS Task ID: 5276B2269342452195A4D086EDF721EB	APWS Project ID: EC3425EA4F804C29BA725501D19BE5F1
Procedure: RNAV (GPS) RWY 24 AMDT 0F		Enroute: NO	Specialist: Cannon, Brett		Agreement Number:
Airport ID: KPOU			Airport City: POUGHKEEPSIE		State: NY
Facility ID:	Facility Type:	Flight Inspection Remark Type:			
<div> <div> Procedure Comments: P-NOTAM This Cancels FDC 0/5366 Order 8260.3, chapter 2, New Circling Criteria Applied Contact Dave Teffeteller at 202-267-5177 </div> <div> <div>QUALITY 9 CHECKED</div> <div>QUALITY 45 CHECKED</div> </div> </div>					

OLD

POUGHKEEPSIE, NEW YORK

AL-286 (FAA)

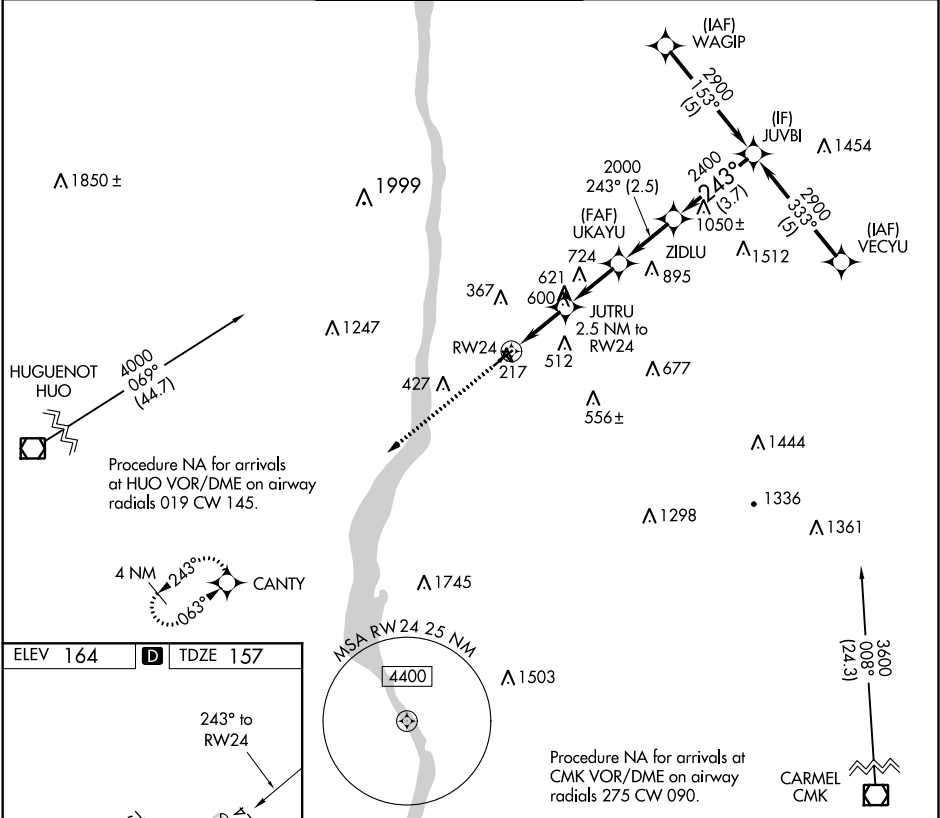
21112

APP CRS	Rwy Idg	4886
243°	TDZE	157
	Apt Elev	164

RNAV (GPS) RWY 24
HUDSON VALLEY RGNL (POU)

<p>⚠ Circling NA to Rwy 7 and 25. Circling Rwy 15, 33 NA at night. Rwy 24 helicopter visibility reduction below $\frac{3}{4}$ SM NA. Rwy 15, 33 helicopter visibility reduction below 1 NA. DME/DME RNP-0.3 NA. When local altimeter setting not received, use Montgomery altimeter setting and increase all MDA 80 feet, and LNAV Cat C and Circling Cats A, C and D visibility $\frac{1}{4}$ mile.</p>	<p>MISSED APPROACH: Climb to 3200 direct CANTY and hold.</p>
---	---

ATIS 126.75	NEW YORK APP CON 132.75 363.1	DUTCHESS COUNTY TOWER* 124.0 (CTAF) 0 269.15	GND CON 121.8	CLNC DEL 121.8	UNICOM 122.95
----------------	----------------------------------	---	------------------	-------------------	------------------



POUGHKEEPSIE, NEW YORK
Orig-E 22JUN17

41°38'N-73°53'W

HUDSON VALLEY RGNL (POU)
RNAV (GPS) RWY 24

NE-2, 17 JUN 2021 to 15 JUL 2021

NE-2, 17 JUN 2021 to 15 JUL 2021

