

Flight Procedures Cover Page	Task Action: P-NOTAM	Task Type: IAP	Estimated Chart Date: 09/05/2024	APWS Task ID: 515610E657924DB39305F8A45793FF36	APWS Project ID: 52326C3B63534E78972FFACC8EDE251F
Procedure: ILS OR LOC RWY 25 AMDT 2B		Enroute: NO	Specialist: Smart, Phillip		Agreement Number:
Airport ID: KVDI			Airport City: VIDALIA		State: GA
Facility ID:	Facility Type:	Flight Inspection Remark Type:			
<div>Procedure Comments:</div> <div>P-NOTAM CREATED, ALT MISSED REMOVED, ADDING EQUIPMENT REQUIRED NOTE: ADF REQUIRED</div> <div>Processed IAW Technical Support Group (AJF-17) Memo dated 07/07/2021 Guidance for Procedural Changes Requiring Flight Inspection/Validation</div> <div>CONTACT MR. JOHN BORDY AT 405-954-0980. FEDERAL AVIATION ADMINISTRATION</div> <div><div>QUALITY 20 CHECKED</div><div>QUALITY 33 CHECKED</div></div>					

OLD

VIDALIA, GEORGIA

AL-5607 (FAA)

24025

LOC I-VDI 110.3	APP CRS 249°	Rwy Idg TDZE Apt Elev	6002 273 274
---------------------------	------------------------	-----------------------------	---

ILS or LOC RWY 25

VIDALIA RGNL (VDI)

⚠ NA When local altimeter setting not received, use Baxley altimeter setting and increase all DAs 77 feet and all MDAs 80 feet, increase S-LOC 25 Cat C/D visibility ¼ mile, Circling Cat C/D visibility ¼ mile. For inop MALSR, increase S-LOC 25 Cat C/D visibility to 1¾ mile. For inop MALSR, when using Baxley altimeter setting increase S-ILS 25 all Cats visibility to ¾ mile. Night landing Rwy 32 NA. ADF required.

MALSR

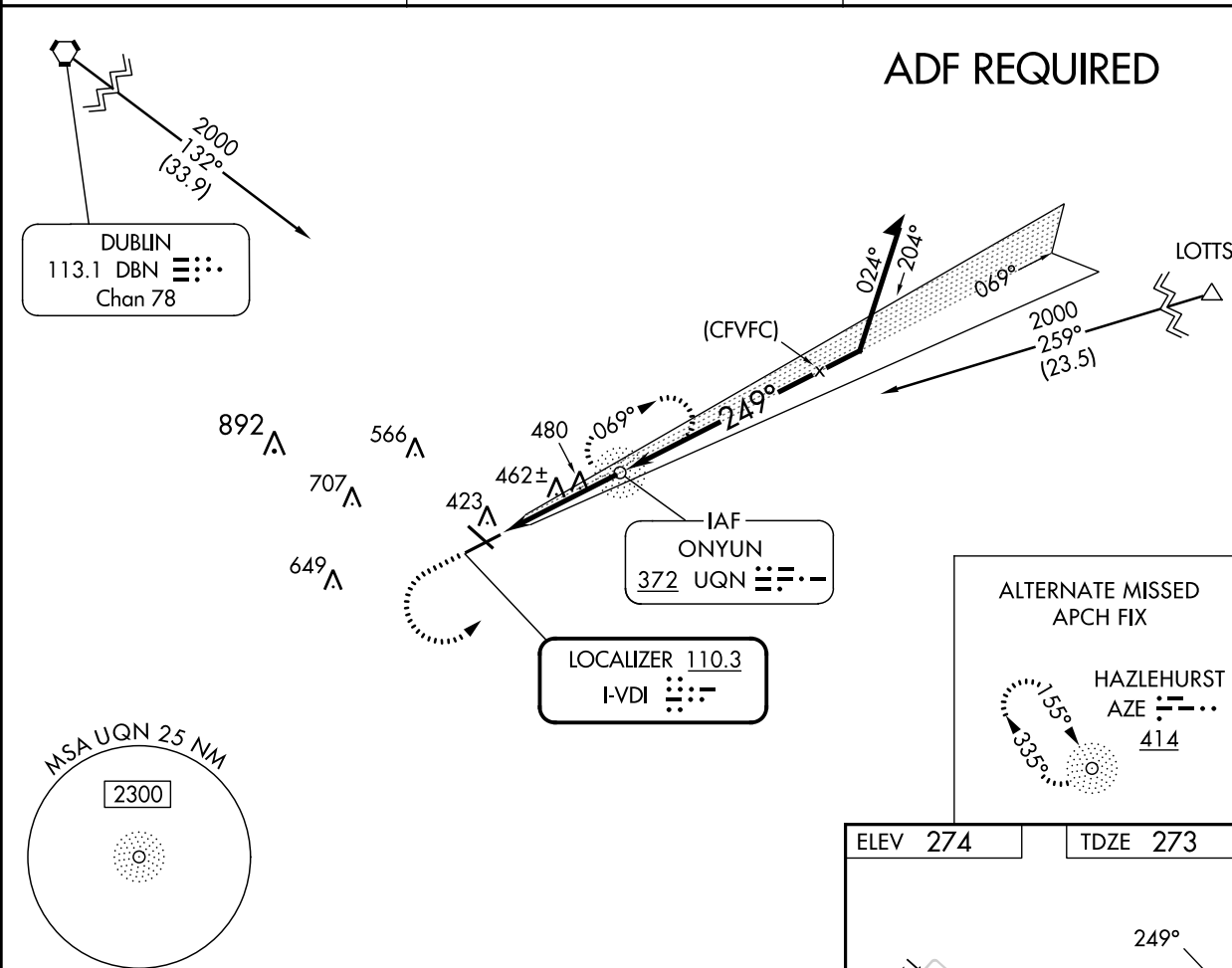


MISSED APPROACH:
Climb to 1100 then
climbing left turn to
2000 direct UQN
NDB and hold.

AWOS-3
119.925

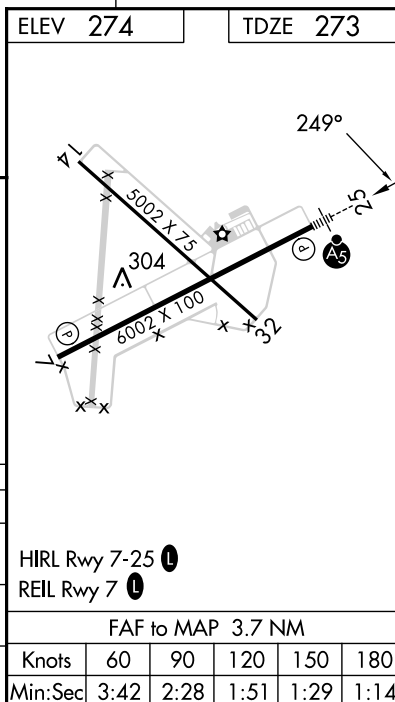
JACKSONVILLE CENTER
127.575 269.025

UNICOM
122.8 (CTAF) 0



SE-4, 22 FEB 2024 to 21 MAR 2024

1100	2000	UQN	UQN NDB	Remain within 10 NM
↑	↘	⊙	1491	069°
VGSI and ILS glidepath not coincident (VGSI Angle 3.00/TCH 48).			249°	2000
			1500	GS 3.00° TCH 44
			3.7 NM	
CATEGORY	A	B	C	D
S-ILS 25	473-1½ 200 (200-1½)			
S-LOC 25	740-1½ 467 (500-1½)		740-1 467 (500-1)	
C CIRCLING	740-1 466 (500-1)		920-1¾ 646 (700-1¾)	1060-2½ 786 (800-2½)



VIDALIA, GEORGIA
Amdt 2A 03JAN19

32°12'N-82°22'W

VIDALIA RGNL (VDI)
ILS or LOC RWY 25

SE-4, 22 FEB 2024 to 21 MAR 2024