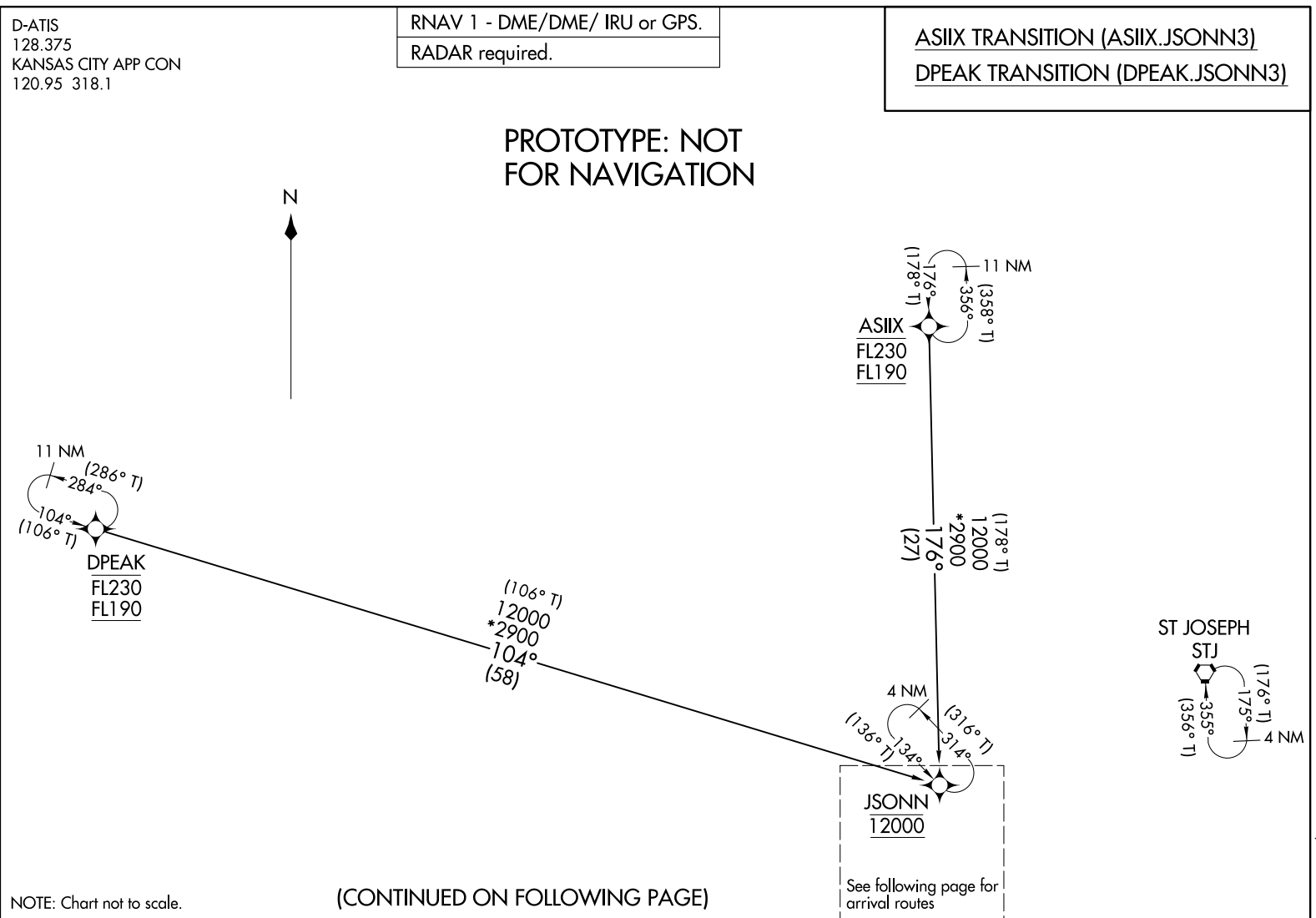


Flight Procedures Cover Page	Task Action: FLIGHT CHECK	Task Type: STAR	Estimated Chart Date: 02/23/2023	APWS Task ID: 511A32F53FDB4A6A8BA53F67C4B6ED78	APWS Project ID: 2E7884F48FFB49C283CFDB5A606ED44C
Procedure: STAR JSONN THREE (RNAV) KANSAS CITY MO KMCI		Enroute: YES	Specialist: Mccartney, Michael		Agreement Number:
Airport ID: KMCI			Airport City: KANSAS CITY		State: MO
Facility ID:	Facility Type:	Flight Inspection Remark Type: New FC Slot			
<div>Procedure Comments: ABBREVIATED AMENDMENT. USES ACTIVE AIRPORT (KMCI) DATA. ADD CROSSING ALTITUDE RESTRICTION TO FIX SDKIS AT/ABOVE 7000. THIS LOWERS DME/DME ASSESSMEMENT FROM 10000 FT TO 7000 FT. JSONN THREE (RNAV) STAR CHANGES CAN POSSIBLY BE FLIGHT CHECK TABLE-TOP. ESV: TOP VORTAC. CONTACT: ERIC SUSKI, AJV-A431, MANAGER, (405)-954-7331. <div>Digitally signed by ERIC N SUSKI Nov 02, 2022</div><div>10/13/2022 <div>QUALITY 14 CHECKED</div><div>QUALITY 38 CHECKED</div></div></div>					

FIPC DME/DME FORM							
PROCEDURE: STAR JSONN THREE (RNAV) KANSAS CITY MO KMCI			AIRPORT NAME: KANSAS CITY INTL		AIRPORT ID: KMCI	SPECIAL CONTROL NO: OG-11-080-22	
FAC ID: JSONN3		CITY: KANSAS CITY			ST: MO	ORIG CHART DATE: 02/23/2023	
DFL TYPE: PROC/D	THIRD PARTY: <input type="checkbox"/> YES	EST. TIME ON SITE: 1.0	REIMB. NUMBER:		PTS TASK ID: 511A32F53FDB4A6A8BA53F67C4B6ED78		
PREFLIGHT NOTES							
REVIEWER: anthony d vallera					DATE: 12/13/2022		
COMMENTS:					CHECK ONE:		
					<input checked="" type="checkbox"/> FLT CK REQ <input type="checkbox"/> NFCR <input type="checkbox"/> REJECT		
							YES
					CPV COMPLETE?		X
PROCEDURE RESULTS							
INSPECTION DATE: 12/13/2022		CREW #: VN218	N #: N83	INSTRUMENT PROCEDURE STATUS: <input checked="" type="checkbox"/> SAT <input type="checkbox"/> SAT W/CHANGES <input type="checkbox"/> UNSAT		ARINC CODING: <input checked="" type="checkbox"/> SAT <input type="checkbox"/> SAT/GOLD <input type="checkbox"/> UNSAT	
FLIGHT INSPECTOR SIGNATURE: anthony d vallera @ 12/13/2022 19:38			PRINTED NAME: VALLERA, ANTHONY DOMINIC				NOTAM INITIATED? <input type="checkbox"/> YES <input checked="" type="checkbox"/> NO
FLIGHT INSPECTOR REMARKS:							
DME/DME STATUS: <input type="checkbox"/> SAT <input type="checkbox"/> UNSAT		SPECIALIST SIGNATURE:			PRINTED NAME:		
SPECIALIST REMARKS:							
IN-FLIGHT OBSTACLE REPORT							
OBSTRUCTION ID #:	COORDINATES OR LOCATION:		GNSS ALTITUDE (MSL):		BAROMETRIC ALTITUDE (MSL):		HEIGHT ABOVE GROUND LEVEL:

ESV Details

Originating Office :AJV-C2		Airspace Docket Number :		Request Type :Establish		
Facility Data						
Chart Name:TOPEKA		City:TOPEKA		Ident:TOP		State:KS
Type/Class: TACAN		Frequency: M1212		Reference Number: 22077515		
Extended Service Volume Data: (Requesting Officer)						
ESV ID	Radial 1	Radial 2	Distance	Minimum Altitude	Maximum Altitude	
FAA 704280 - 017	340	1	51	110	191	
Requirement: DME COVERAGE AND MITIGATE CRITICAL DME FOR KMCI JSONN STAR						
Signature:Medina Jose		Routing Symbol:				Date:07/21/2022
Extended Service Volume Data: (FMO)						
ESV ID	Radial 1	Radial 2	Distance	Minimum Altitude	Maximum Altitude	Action Type
FAA 704280 - 017	340	1	51	110	191	APPROVE
Requirement/Remarks: DME COVERAGE AND MITIGATE CRITICAL DME FOR KMCI JSONN STARAPPROVED. FREQ. PROTECTION & FIELD STRENGTH. PENDING FLIGHT INSPECT @ REQUIRED. DIST. & MIN ALT..						
Signature:Bowers Michael		Routing Symbol:				Date:07/21/2022
Extended Service Volume Data: (Super FMO)						
ESV ID	Radial 1	Radial 2	Distance	Minimum Altitude	Maximum Altitude	Action Type
FAA 704280 - 017	340	1	51	110	191	APPROVE
Requirement/Remarks: DME COVERAGE AND MITIGATE CRITICAL DME FOR KMCI JSONN STARAPPROVED. FREQ. PROTECTION & FIELD STRENGTH. PENDING FLIGHT INSPECT @ REQUIRED. DIST. & MIN ALT..						
Signature:Hughes Dennis		Routing Symbol:				Date:07/25/2022
Extended Service Volume Data: (FIFO)						
ESV ID	Radial 1	Radial 2	Distance	Minimum Altitude	Maximum Altitude	Action Type
FAA 704280 - 017	340	1				
Requirement/Remarks:						
Signature:		Routing Symbol:				Date:

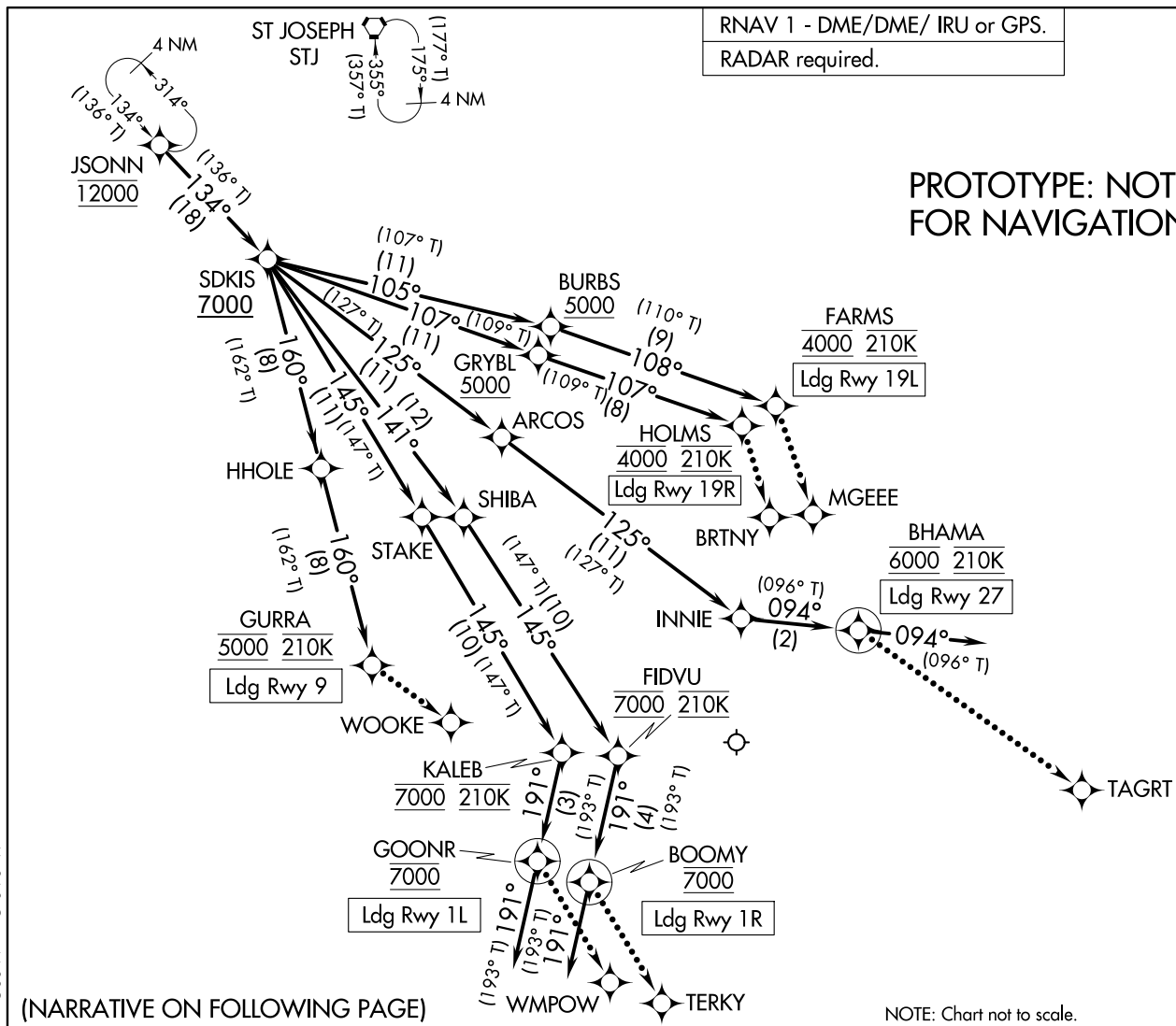


D-ATIS
128.375
KANSAS CITY APP CON
120.95 318.1

PROTOTYPE: NOT
FOR NAVIGATION

RNAV 1 - DME/DME/ IRU or GPS.

RADAR required.



NOTE: Chart not to scale.

(NARRATIVE ON FOLLOWING PAGE)

JSONN THREE ARRIVAL(RNAV) Arrival Routes
(JSONN.JSONN3) FIG

KANSAS CITY, MISSOURI
KANSAS CITY INTL (MCI)

AUTOMATED AL-780 JSONN ARRIVAL (CONT 1)

NC-3
13 OCT 2022
COMPILER: CG
REVIEWER:
DBL CHKR:
EFF: FIG

ARRIVAL ROUTE DESCRIPTION

From JSONN on track 134° to cross SDKIS at or above 7000.

LANDING RUNWAY 1L: From SDKIS on track 145° to STAKE, then on track 145° to cross KALEB at 7000 and at 210K, then on track 191° to cross GOONR at 7000, then on track 191°. Expect RADAR vectors to final approach course for RNP, GPS, or ILS RWY 1L approach.

LANDING RUNWAY 1R: From SDKIS on track 141° to SHIBA, then on track 145° to cross FIDVU at 7000 and at 210K, then on track 191° to cross BOOMY at 7000, then on track 191°. Expect RADAR vectors to final approach course for RNP, GPS, or ILS RWY 1R approach.

LANDING RUNWAY 9: From SDKIS on track 160° to HHOLE, then on track 160° to cross GURRA at 5000 and at 210K. Expect RNP Z RWY 9 approach, or expect RADAR vectors to final approach course for ILS or GPS RWY 9 approaches.

LANDING RUNWAY 19L: From SDKIS on track 105° to cross BURBS at or above 5000, then on track 108° to cross FARMS at 4000 and at 210K. Expect RNP Z RWY 19L approach, or expect RADAR vectors to final approach course for ILS or GPS RWY 19L approaches.

LANDING RUNWAY 19R: From SDKIS on track 107° to cross GRYBL at or above 5000, then on track 107° to cross HOLMS at 4000 and at 210K. Expect RNP Z RWY 19R approach, or expect RADAR vectors to final approach course for ILS or GPS RWY 19R approaches.

LANDING RUNWAY 27: From SDKIS on track 125° to ARCOS, then on track 125° to INNIE, then on track 094° to cross BHAMA at 6000 and at 210K, then on track 094°. Expect RADAR vectors to final approach course for RNP, GPS, or ILS RWY 27 approach.

LOST COMMUNICATIONS

RUNWAY 1L: After GOONR proceed direct to WMPOW execute ILS or LOC 1L approach.

RUNWAY 1R: After BOOMY proceed direct to TERKY execute ILS or LOC 1R approach.

RUNWAY 9: After GURRA proceed direct to WOOKE execute ILS or LOC 9 approach.

RUNWAY 19L: After FARMS proceed direct to MGEEE execute ILS or LOC 19L approach.

RUNWAY 19R: After HOLMS proceed direct to BRTNY execute ILS or LOC 19R approach.

RUNWAY 27: After BHAMA proceed direct to TAGRT execute ILS or LOC 27 approach.

PROTOTYPE: NOT
FOR NAVIGATION

AUTOMATED AL-780 JSONN ARRIVAL (CONT 2)

NC-3

13 OCT 2022

COMPILER: CG

REVIEWER:

DBL CHKR:

EFF: FIG

CURRENT

NC-3, 08 SEP 2022 to 06 OCT 2022

(JSONN.JSONN2) 22195
AL-780 (FAA)
KANSAS CITY INTL (MCI)
KANSAS CITY, MISSOURI

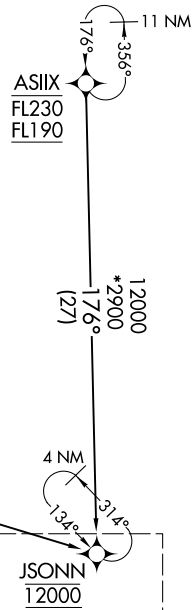
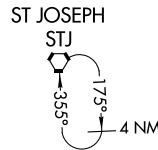
JSONN TWO ARRIVAL (RNAV) Transition Routes

ASIIX TRANSITION (ASIIX.JSONN2)
DPEAK TRANSITION (DPEAK.JSONN2)

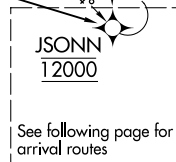
RNAV 1 - DME/DME/ IRU or GPS.
RADAR required.

D-ATIS
128.375
KANSAS CITY APP CON
120.95 318.1

JSONN TWO ARRIVAL (RNAV) Transition Routes
(JSONN.JSONN2) 14JUL22
KANSAS CITY, MISSOURI
KANSAS CITY INTL (MCI)



12000
*2900
104°
(58)



NOTE: Chart not to scale.

(CONTINUED ON FOLLOWING PAGE)

NC-3, 08 SEP 2022 to 06 OCT 2022

RNAV 1 - DME/DME/ IRU or GPS.

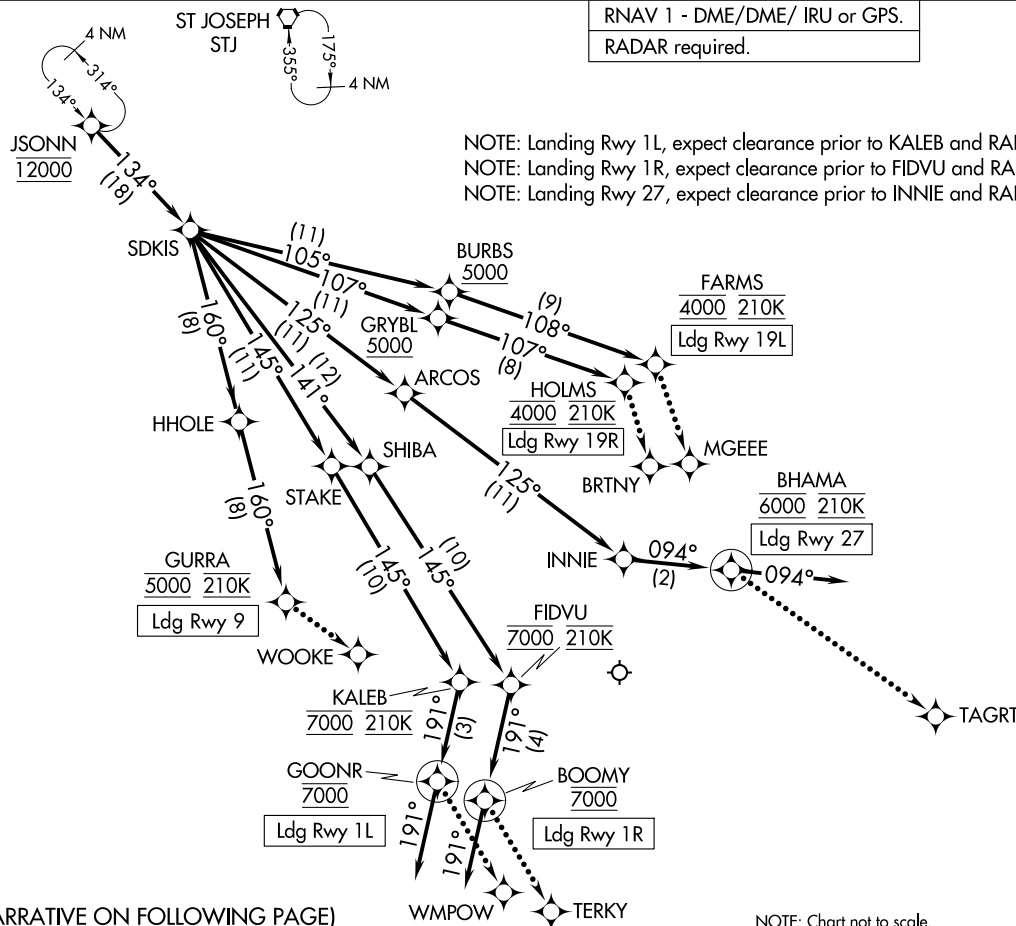
RADAR required.

D-ATIS
128.375
KANSAS CITY APP CON
120.95 318.1

(JSONN,JSONN2) 22195
JSONN TWO ARRIVAL (RNAV)

AL-780 (FAA)

KANSAS CITY INTL (MCT)
KANSAS CITY, MISSOURI



(NARRATIVE ON FOLLOWING PAGE)

NOTE: Chart not to scale.

JSONN TWO ARRIVAL (RNAV) Arrival Routes
(JSONN,JSONN2) 14JUL22

KANSAS CITY, MISSOURI
KANSAS CITY INTL (MCT)

ARRIVAL ROUTE DESCRIPTION

From JSONN on track 134° to SDKIS.

LANDING RUNWAY 1L: From SDKIS on track 145° to STAKE, then on track 145° to cross KALEB at 7000 and at 210K, then on track 191° to cross GOONR at 7000, then on track 191°. Expect RADAR vectors to final approach course for RNP, GPS, or ILS RWY 1L approach.

LANDING RUNWAY 1R: From SDKIS on track 141° to SHIBA, then on track 145° to cross FIDVU at 7000 and at 210K, then on track 191° to cross BOOMY at 7000, then on track 191°. Expect RADAR vectors to final approach course for RNP, GPS, or ILS RWY 1R approach.

LANDING RUNWAY 9: From SDKIS on track 160° to HHOLE, then on track 160° to cross GURRA at 5000 and at 210K. Expect RNP Z RWY 9 approach, or expect RADAR vectors to final approach course for ILS or GPS RWY 9 approaches.

LANDING RUNWAY 19L: From SDKIS on track 105° to cross BURBS at or above 5000, then on track 108° to cross FARMS at 4000 and at 210K. Expect RNP Z RWY 19L approach, or expect RADAR vectors to final approach course for ILS or GPS RWY 19L approaches.

LANDING RUNWAY 19R: From SDKIS on track 107° to cross GRYBL at or above 5000, then on track 107° to cross HOLMS at 4000 and at 210K. Expect RNP Z RWY 19R approach, or expect RADAR vectors to final approach course for ILS or GPS RWY 19R approaches.

LANDING RUNWAY 27: From SDKIS on track 125° to ARCOS, then on track 125° to INNIE, then on track 094° to cross BHAMA at 6000 and at 210K, then on track 094°. Expect RADAR vectors to final approach course for RNP, GPS, or ILS RWY 27 approach.

LOST COMMUNICATIONS

Approach, RUNWAY 1L: After GOONR proceed direct to WMPOW execute ILS or LOC 1L.

Approach, RUNWAY 1R: After BOOMY proceed direct to TERKY execute ILS or LOC 1R.

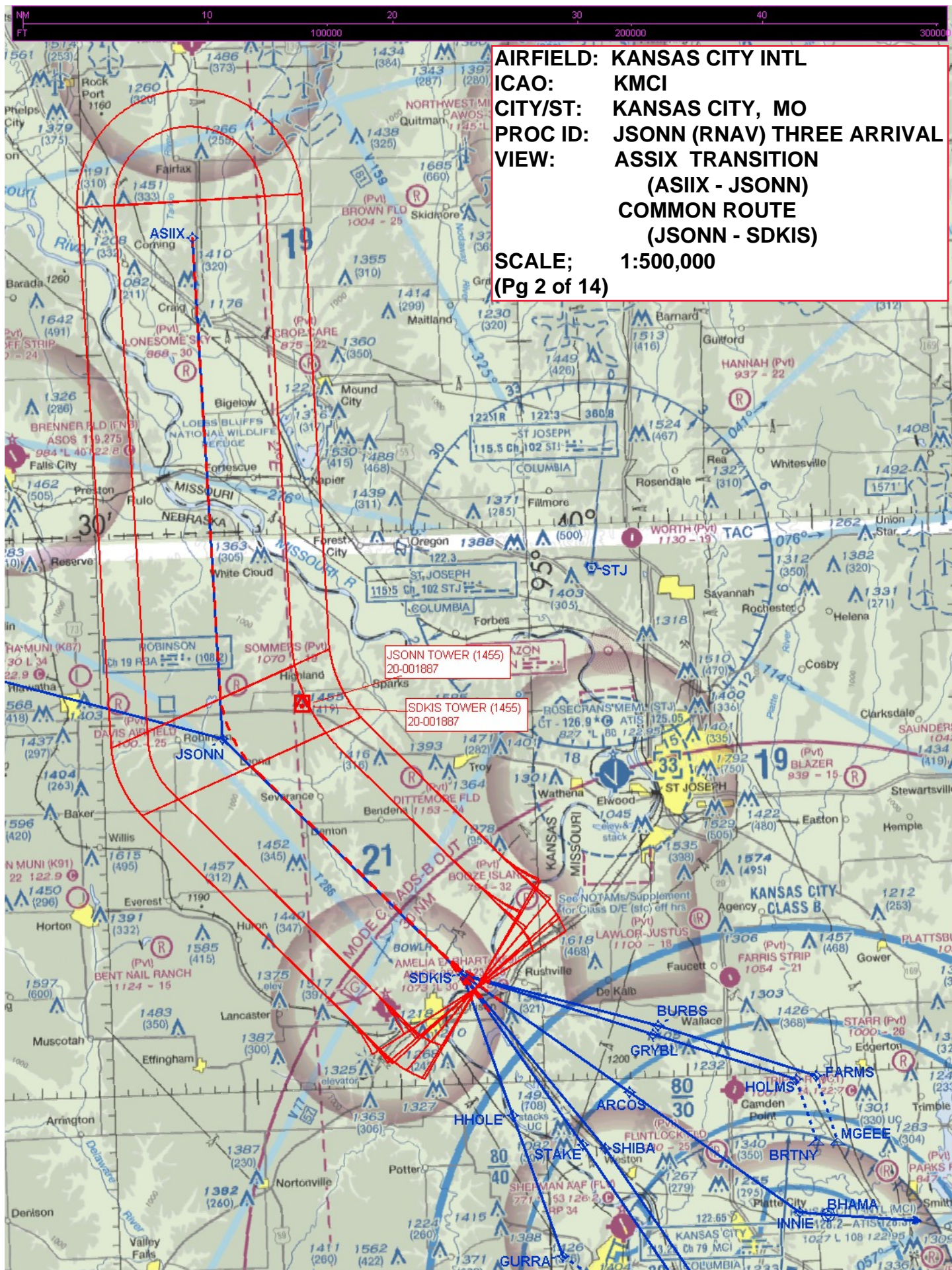
Approach, RUNWAY 9: After GURRA proceed direct to WOOKIE execute ILS or LOC 9.

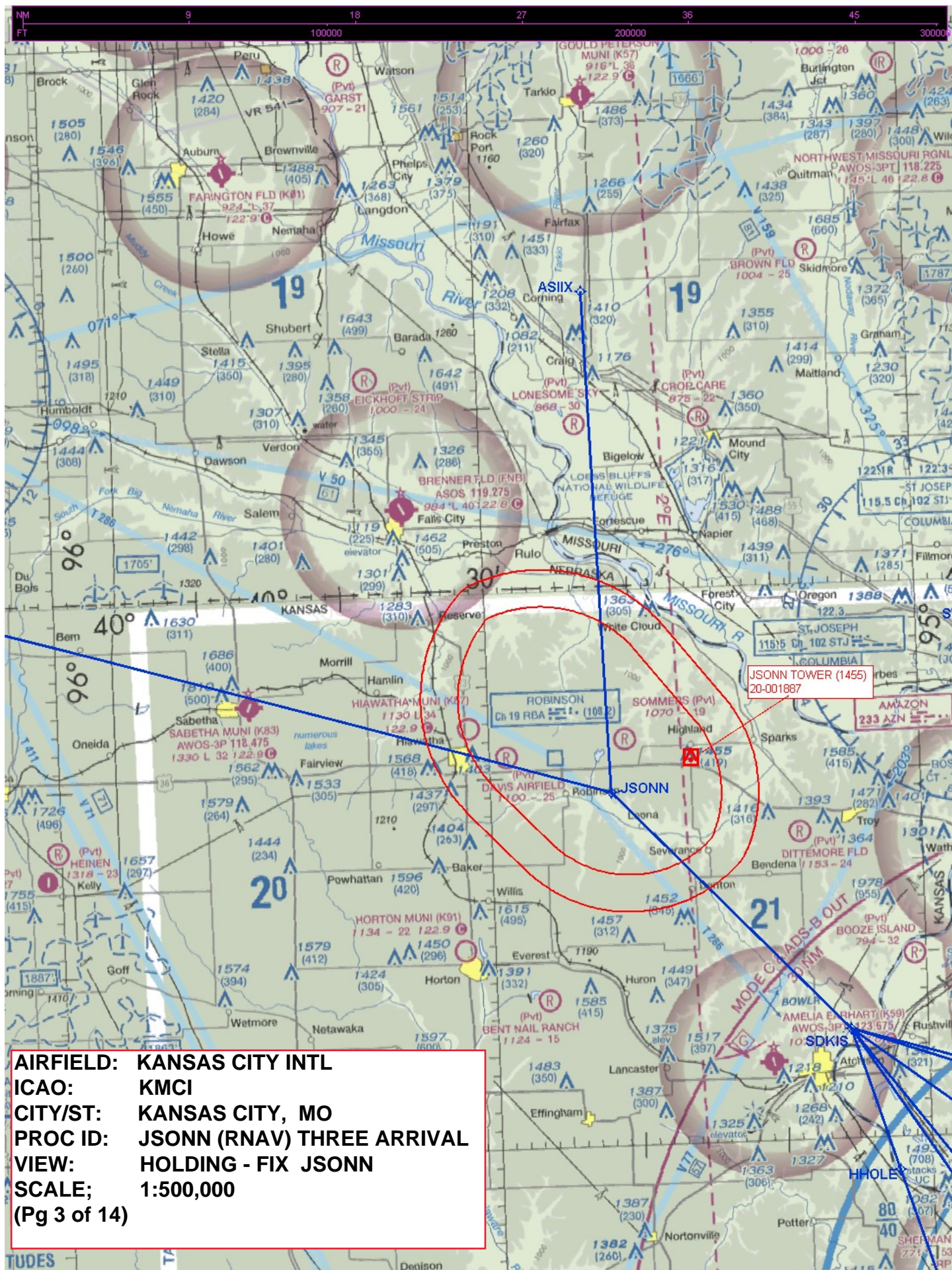
Approach, RUNWAY 19R: After HOLMS proceed direct to BRTNY execute ILS or LOC 19R.

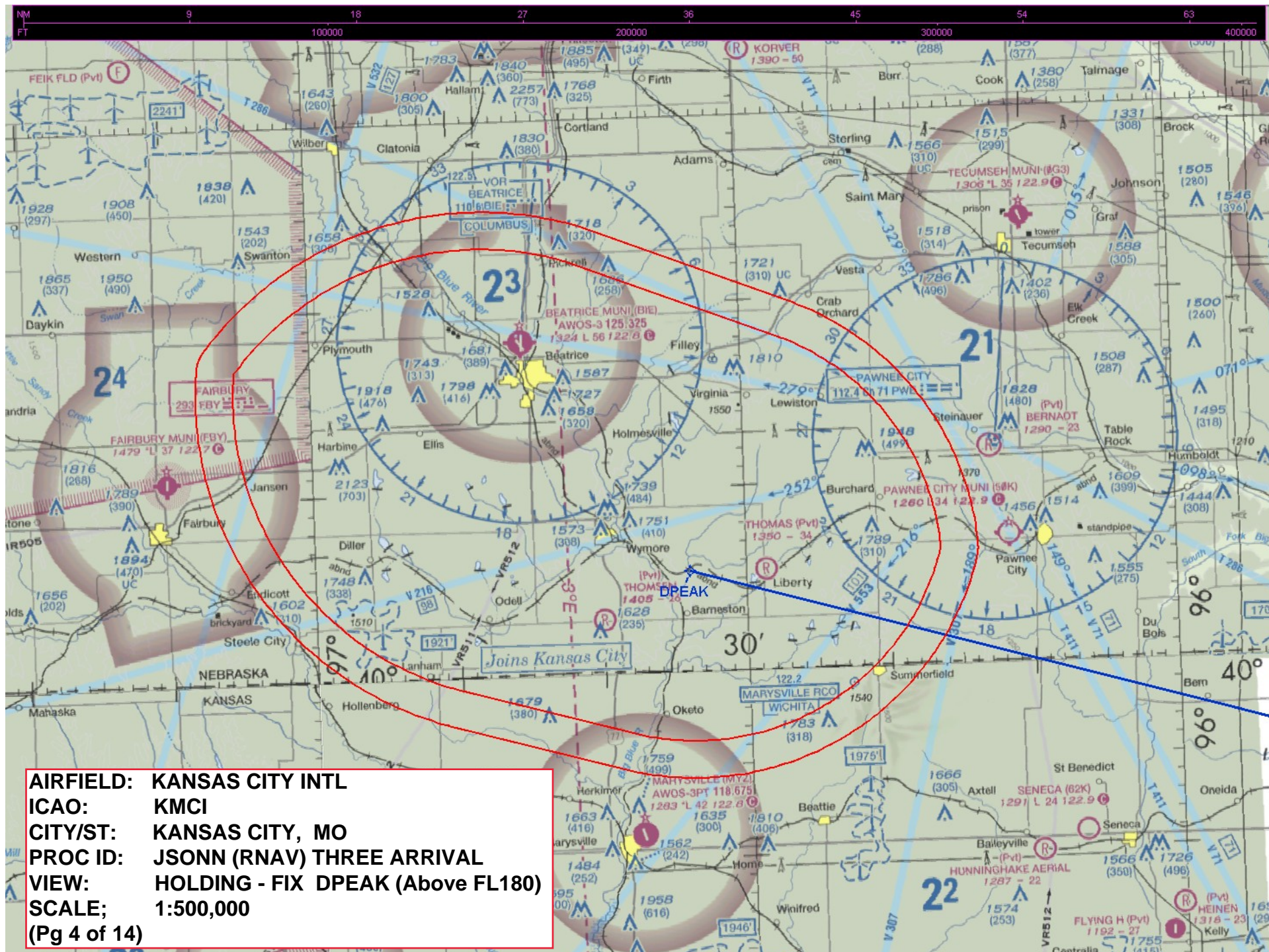
Approach, RUNWAY 19L: After FARMS proceed direct to MGEE execute ILS or LOC 19L.

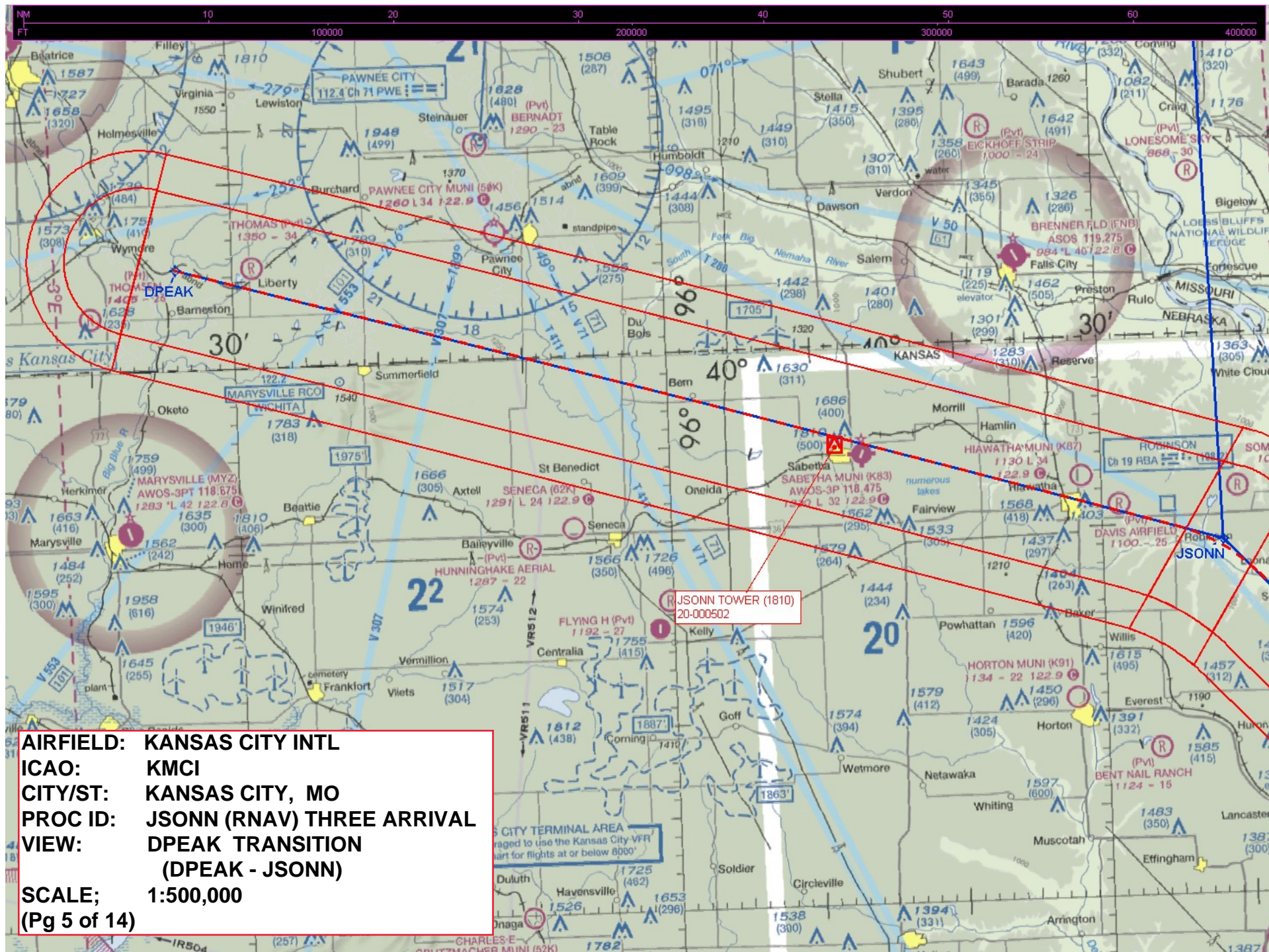
Approach, RUNWAY 27: After BHAMA proceed direct to TAGRT execute ILS or LOC 27.

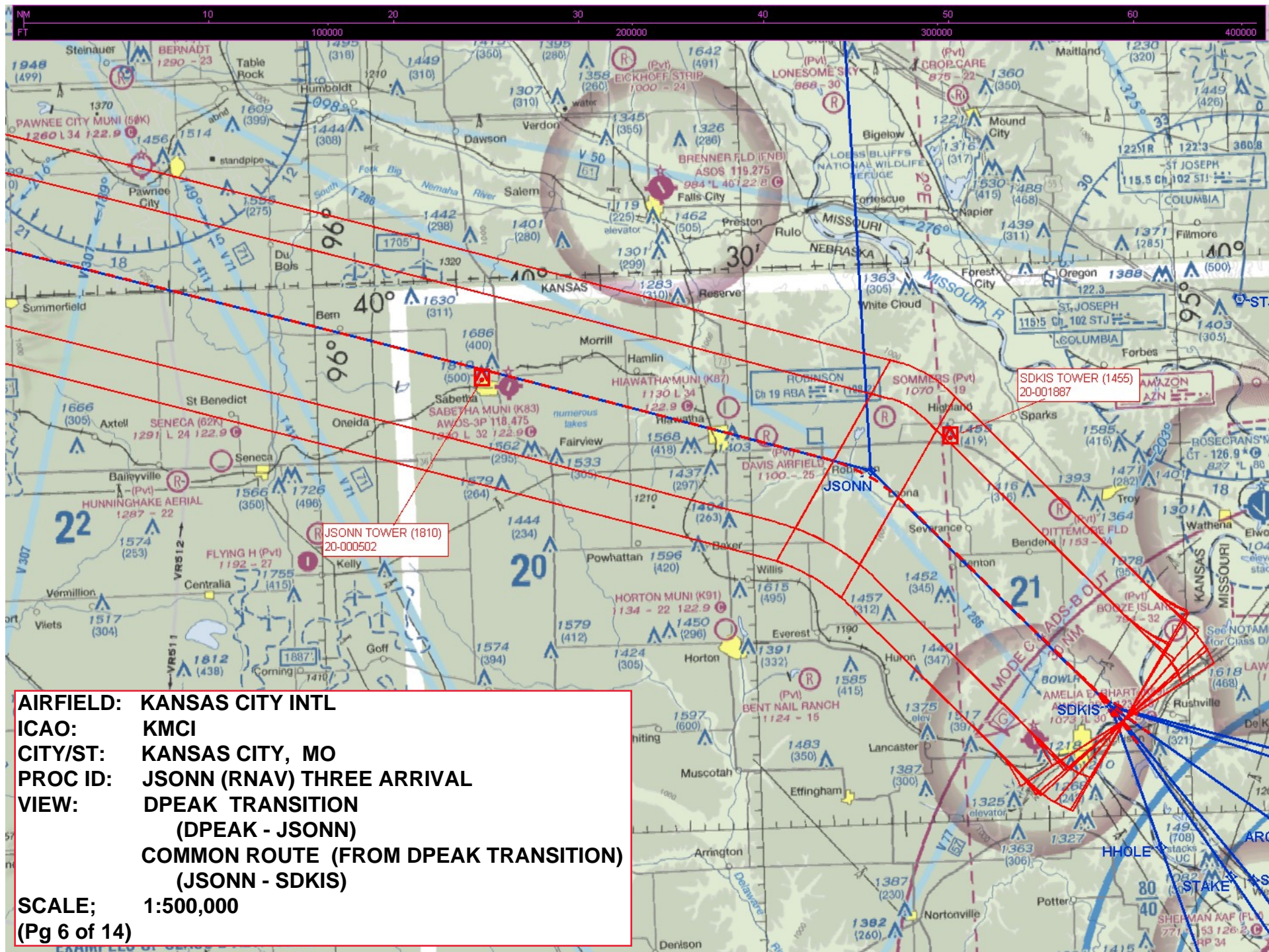




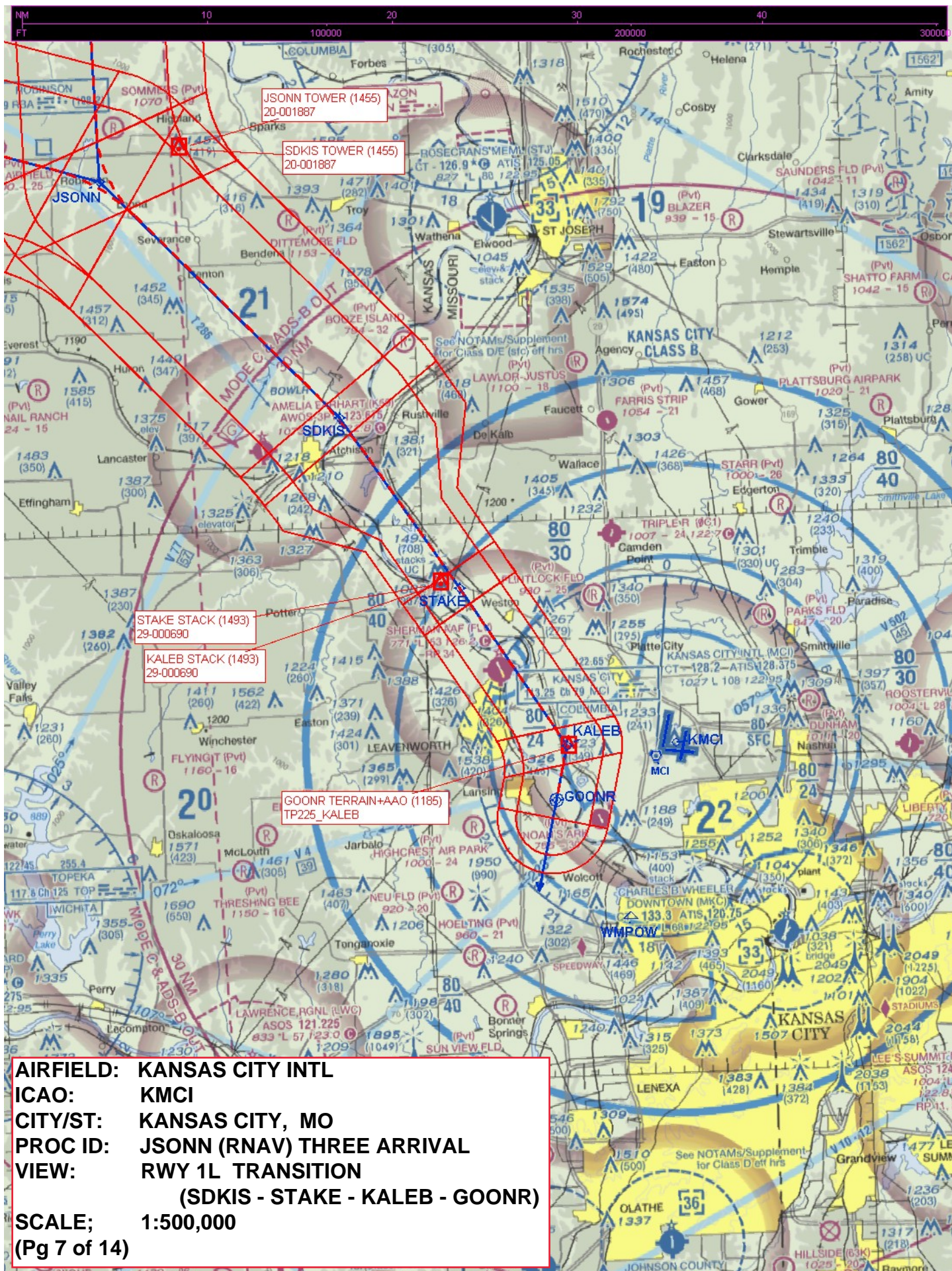


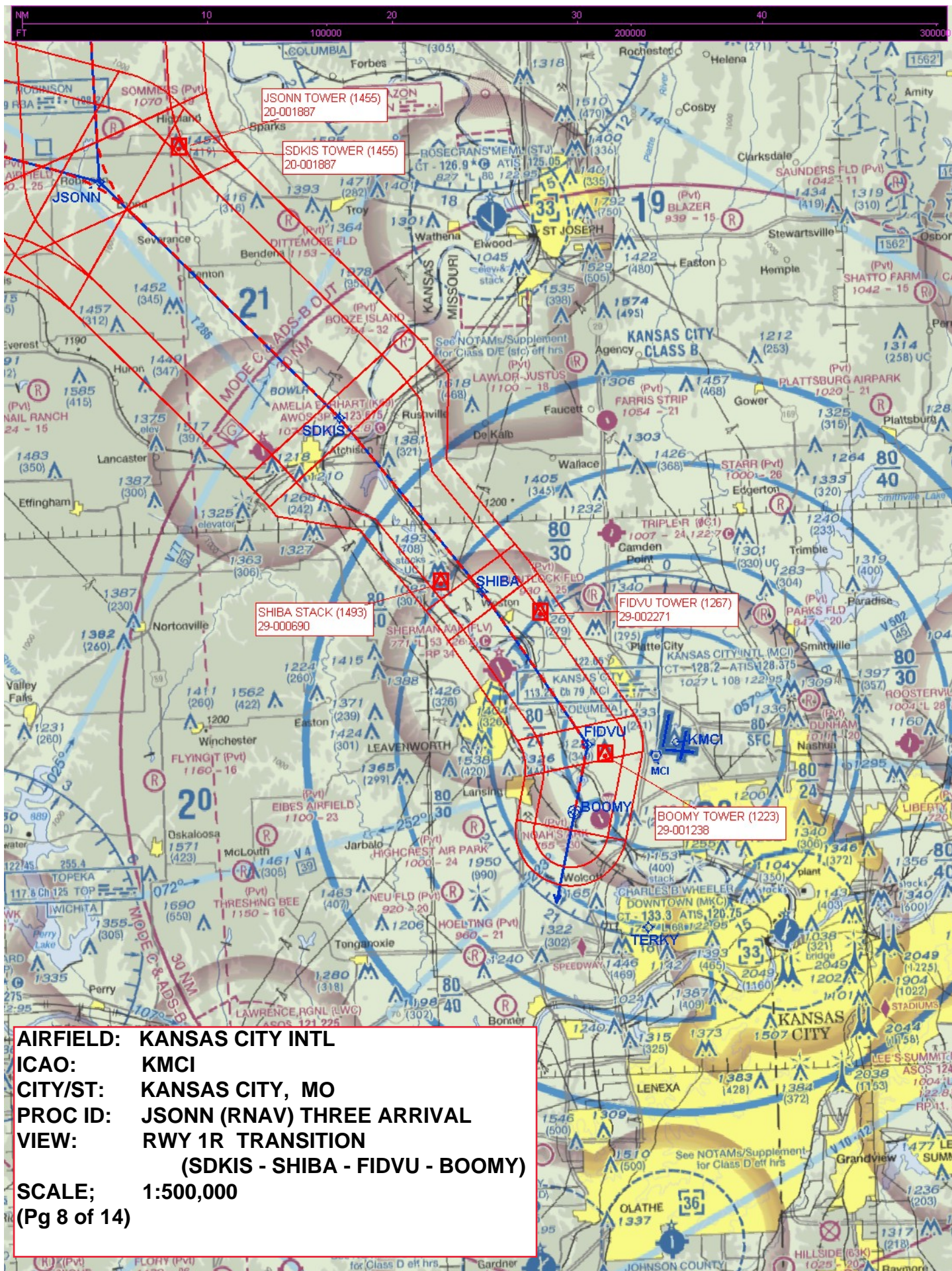




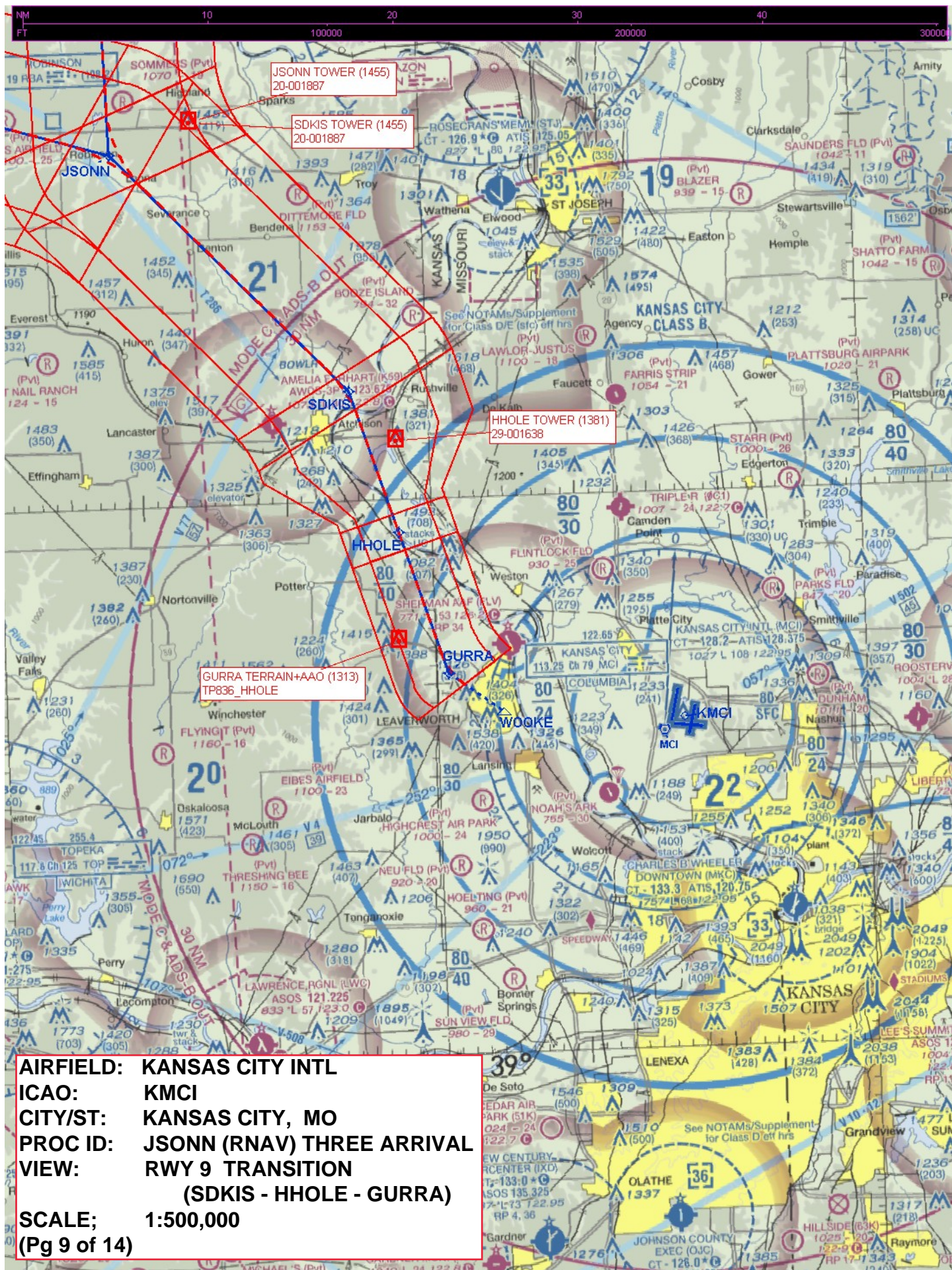


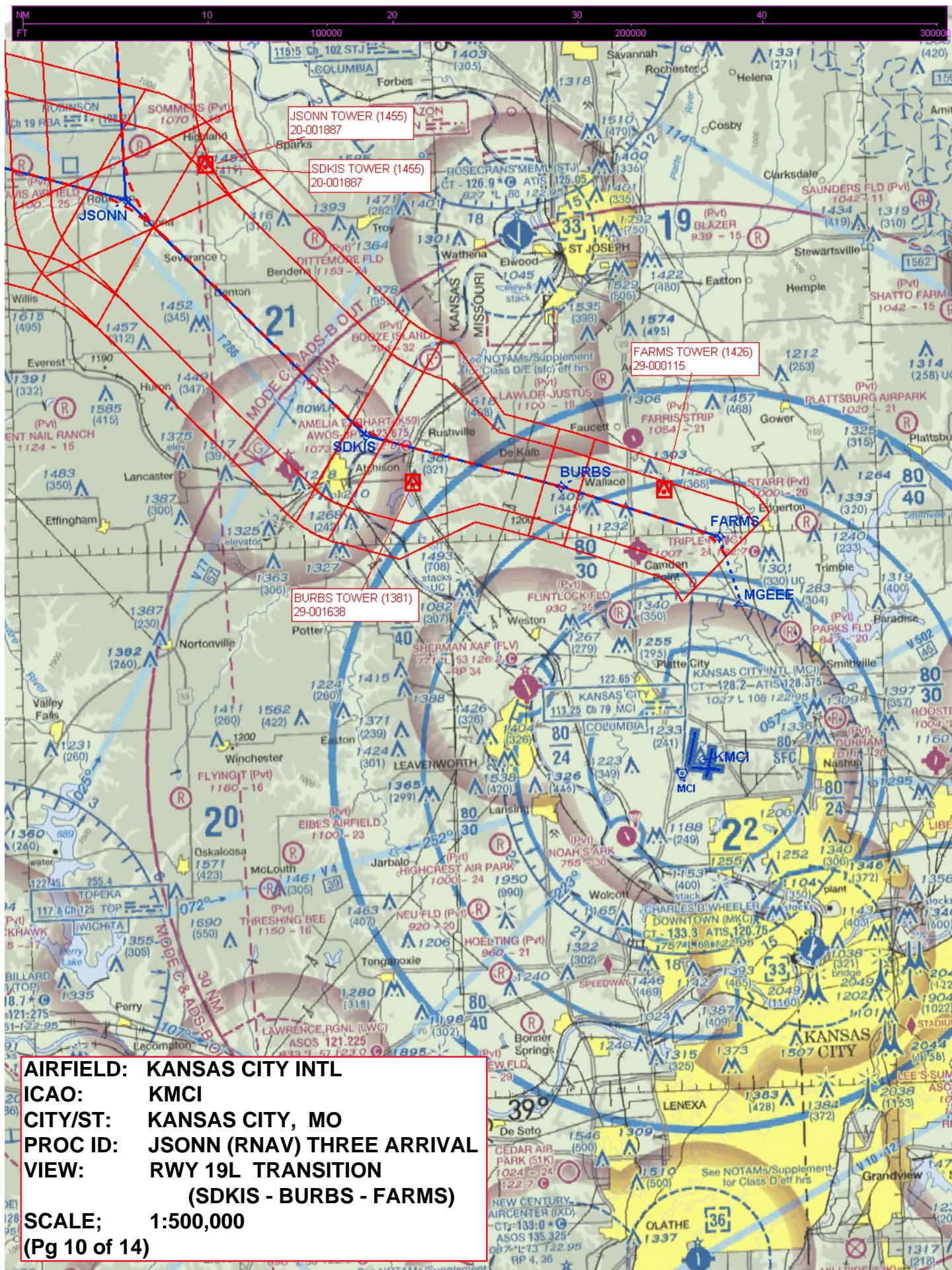
AIRFIELD: KANSAS CITY INTL
ICAO: KNCI
CITY/ST: KANSAS CITY, MO
PROC ID: JONN (RNAV) THREE ARRIVAL
VIEW: DPEAK TRANSITION
(DPEAK - JONN)
COMMON ROUTE (FROM DPEAK TRANSITION)
(JONN - SDKIS)
SCALE: 1:500,000
(Pg 6 of 14)

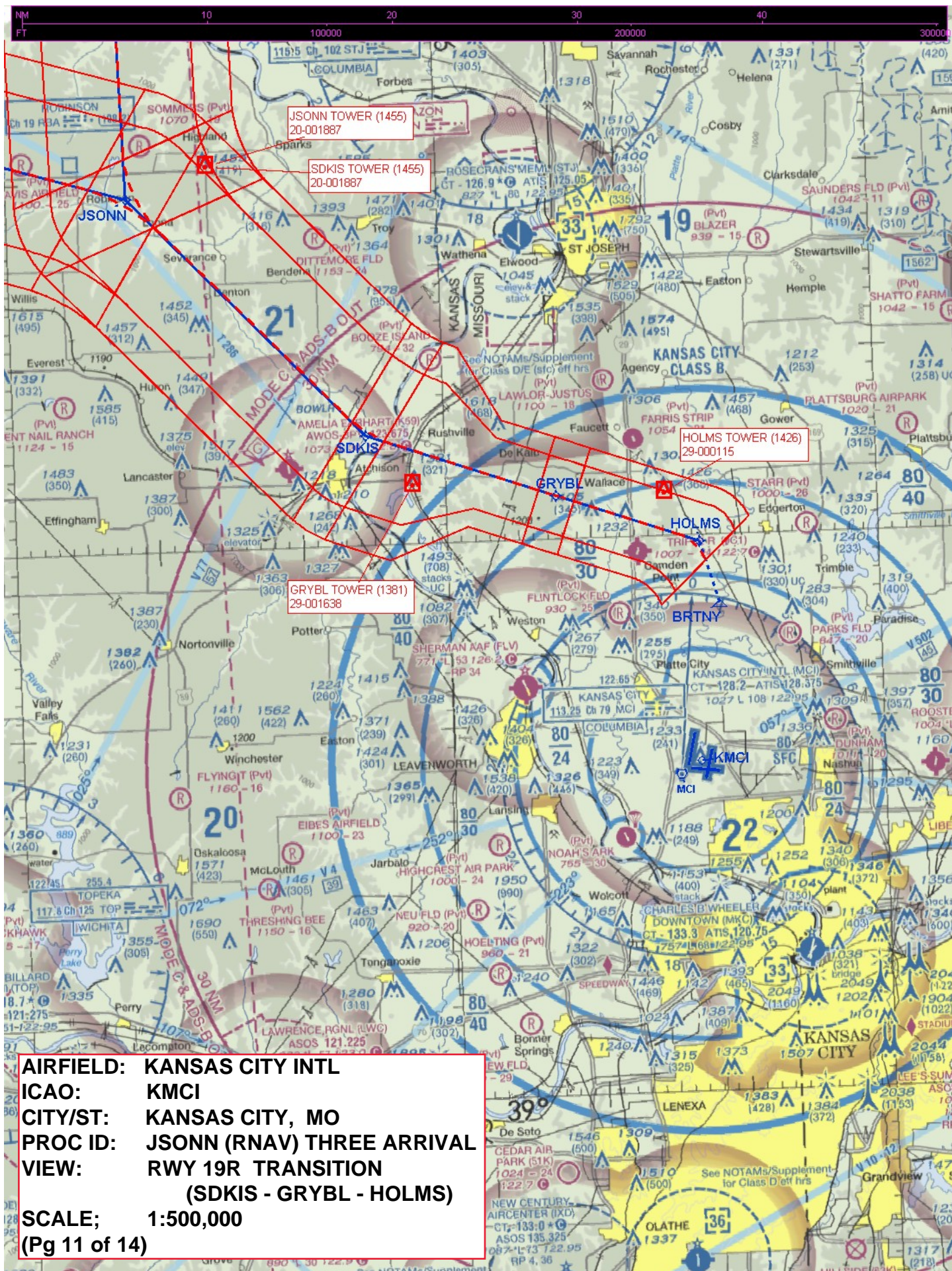


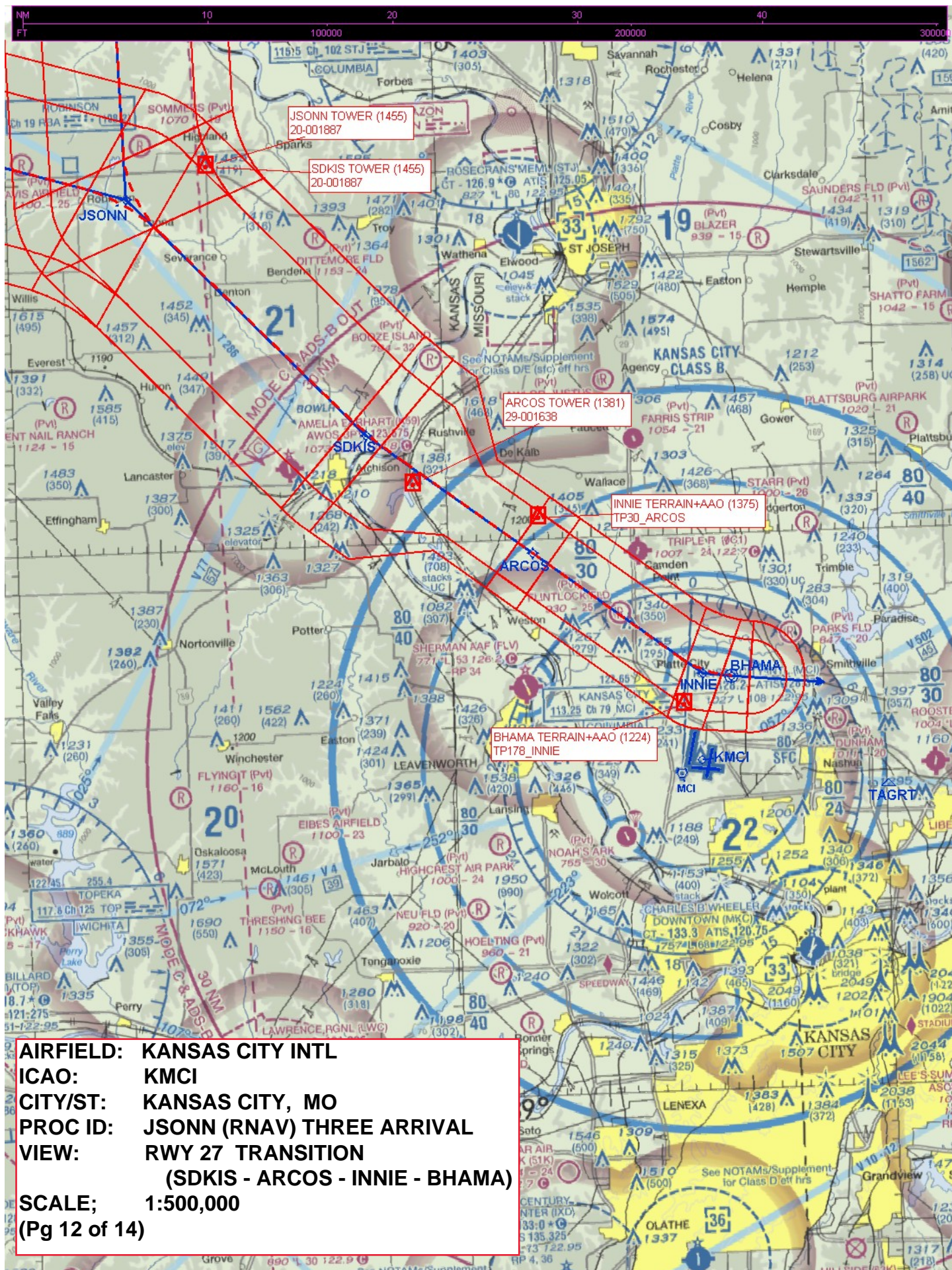


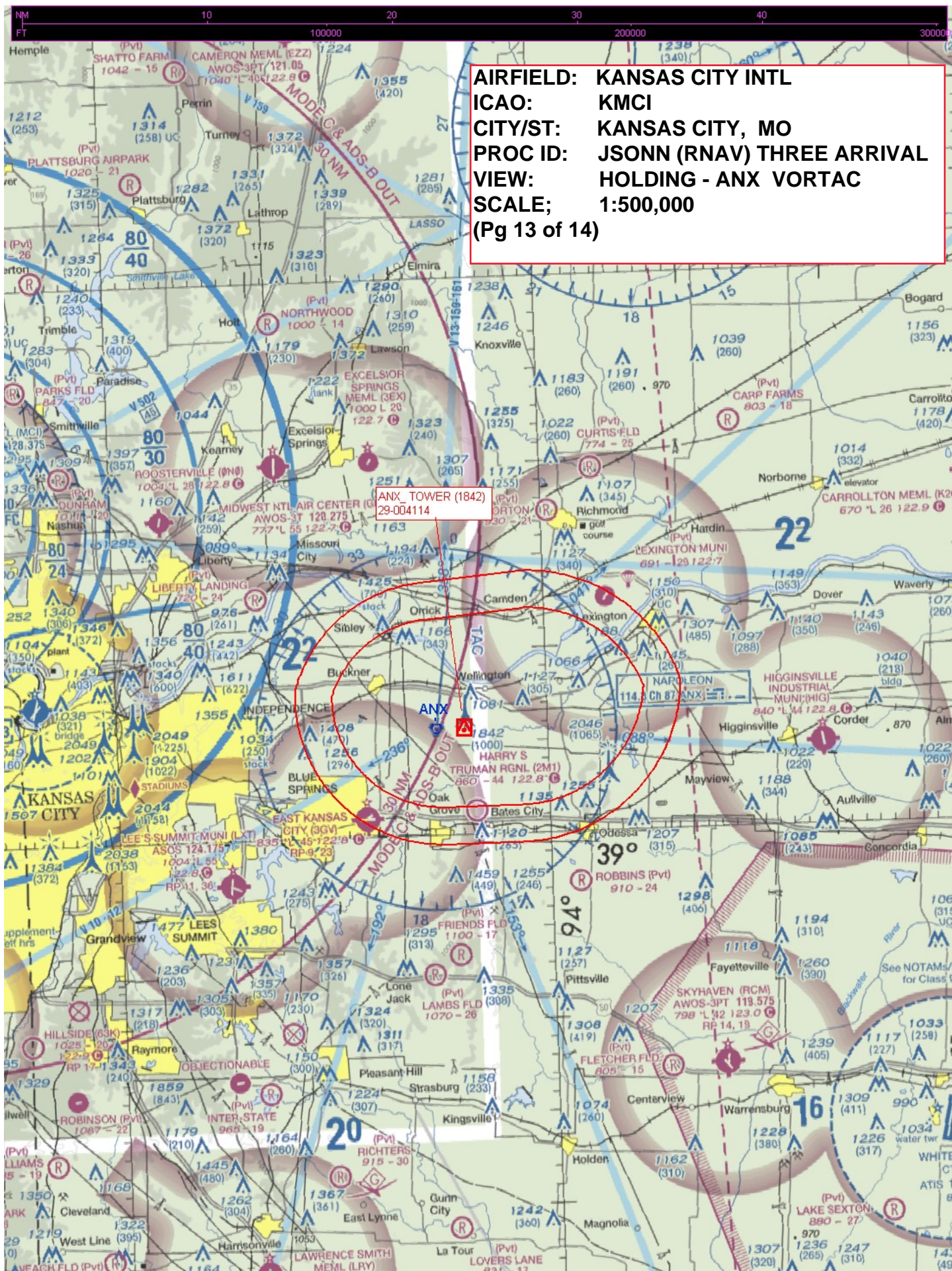
AIRFIELD: KANSAS CITY INTL
ICAO: KMCI
CITY/ST: KANSAS CITY, MO
PROC ID: JONN (RNAV) THREE ARRIVAL
VIEW: RWY 1R TRANSITION
(SDKIS - SHIBA - FIDVU - BOOMY)
SCALE: 1:500,000
(Pg 8 of 14)











AIRFIELD: KANSAS CITY INTL
ICAO: KNCI
CITY/ST: KANSAS CITY, MO
PROC ID: JSONN (RNAV) THREE ARRIVAL
VIEW: HOLDING - STJ VORTAC
SCALE: 1:500,000
(Pg 14 of 14)

STJ_TOW
29-001514

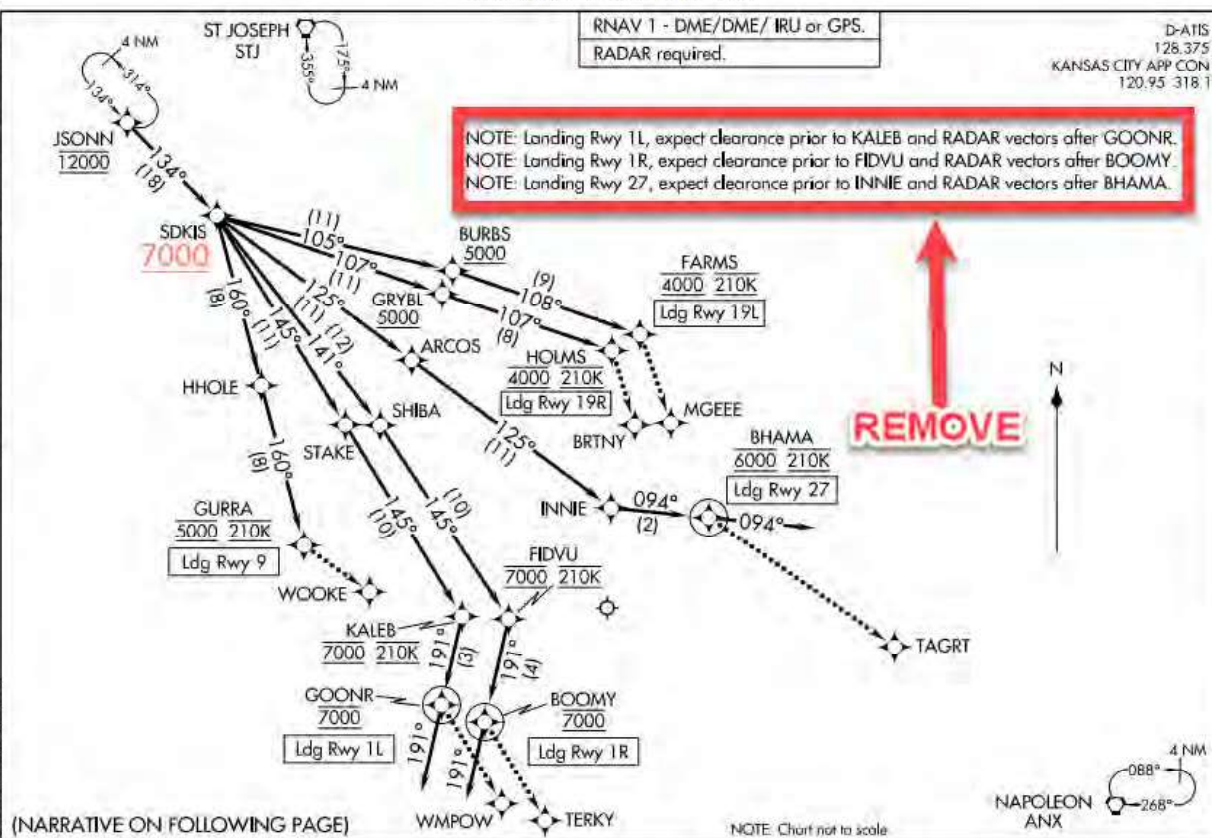
AMAZ
233 AZN

D-ATIS
 128.375
 KANSAS CITY APP CON
 120.95 318.1

RNAV 1 - DME/DME/IRU or GPS.
 RADAR required.

NOTE: Landing Rwy 1L, expect clearance prior to KALEB and RADAR vectors after GOONR.
 NOTE: Landing Rwy 1R, expect clearance prior to FIDVU and RADAR vectors after BOOMY.
 NOTE: Landing Rwy 27, expect clearance prior to INNIE and RADAR vectors after BHAMA.

REMOVE



(NARRATIVE ON FOLLOWING PAGE)

Up Number to TWO

(TYGER.MHOMS1) 22195

AL-780 (FAA)

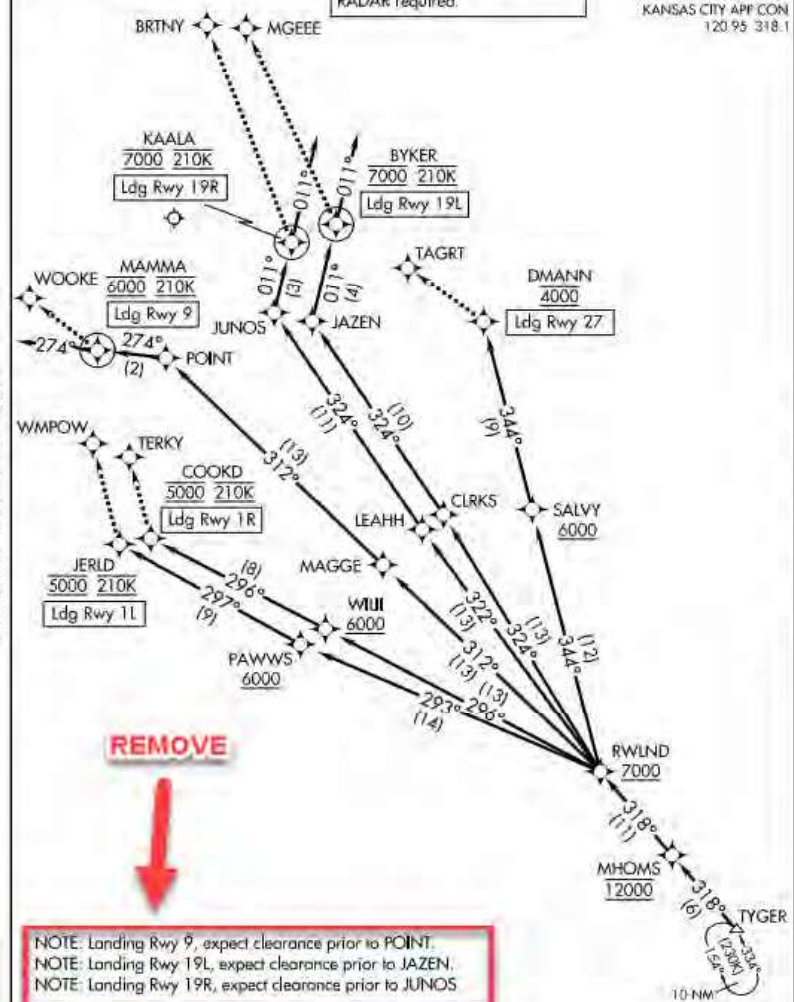
MHOMS ONE ARRIVAL (RNAV) Arrival Routes

KANSAS CITY INTL (MCI)

KANSAS CITY, MISSOURI

RNAV1 - DME/DME/IRU or GPS
RADAR required.

D-ATIS
128.375
KANSAS CITY APP CON
120.95 318.1



REMOVE



(NARRATIVE ON FOLLOWING PAGE)

NOTE: Chart not to scale.

MHOMS ONE ARRIVAL (RNAV) Arrival Routes

(TYGER.MHOMS1) 14JUL22

KANSAS CITY, MISSOURI

KANSAS CITY INTL (MCI)

Up Number to TWO

NC-3, 14 JUL 2022 to 11 AUG 2022

NC-3, 14 JUL 2022 to 11 AUG 2022

RNAV 1 - DME/DME/IRU or GPS
RADAR required.

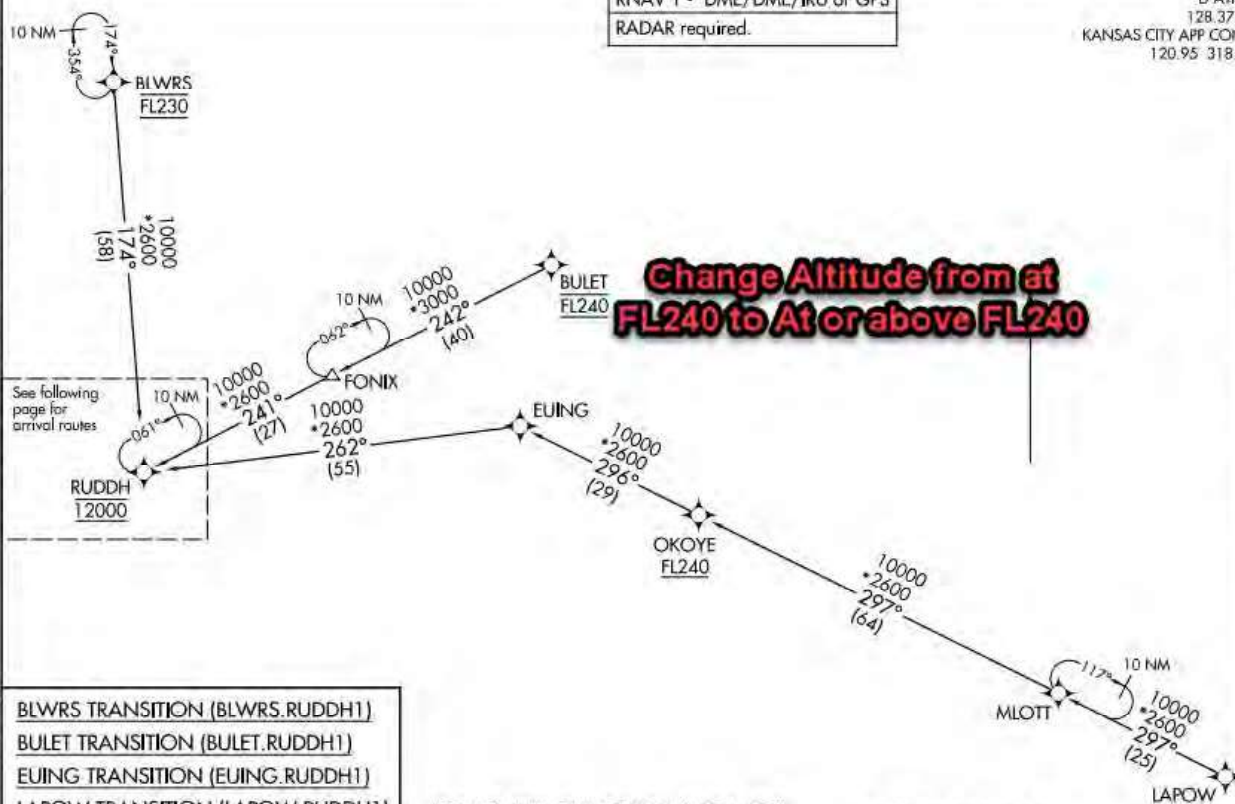
D-ATIS
128.375
KANSAS CITY APP CON
120.95 318.1

(RUDDH RUDDH1) 22195
AL-780 (FAA)

RUDDH ONE ARRIVAL (RNAV) Transition Routes

KANSAS CITY INTL (MCT)
KANSAS CITY, MISSOURI

**Change Altitude from at
FL240 to At or above FL240**



BLWRS TRANSITION (BLWRS.RUDDH1)
BULET TRANSITION (BULET.RUDDH1)
EUING TRANSITION (EUING.RUDDH1)
LAPOW TRANSITION (LAPOW.RUDDH1)

(CONTINUED ON FOLLOWING PAGE)

NOTE: Chart not to scale.

RUDDH ONE ARRIVAL (RNAV) Transition Routes
(RUDDH RUDDH1) 14 JUL 22
10 Number to TWO

KANSAS CITY, MISSOURI
KANSAS CITY INTL (MCT)

NC-3, 14 JUL 2022 to 11 AUG 2022

D-ATIS
128.375
KANSAS CITY APP CON
120.95 318.1

RNAV 1 - DME/DME/IRU or GPS
RADAR required.

(RUDDH, RUDDH) 22195
RUDDH ONE ARRIVAL (RNAV) Arrival Routes

Up Number to TWO

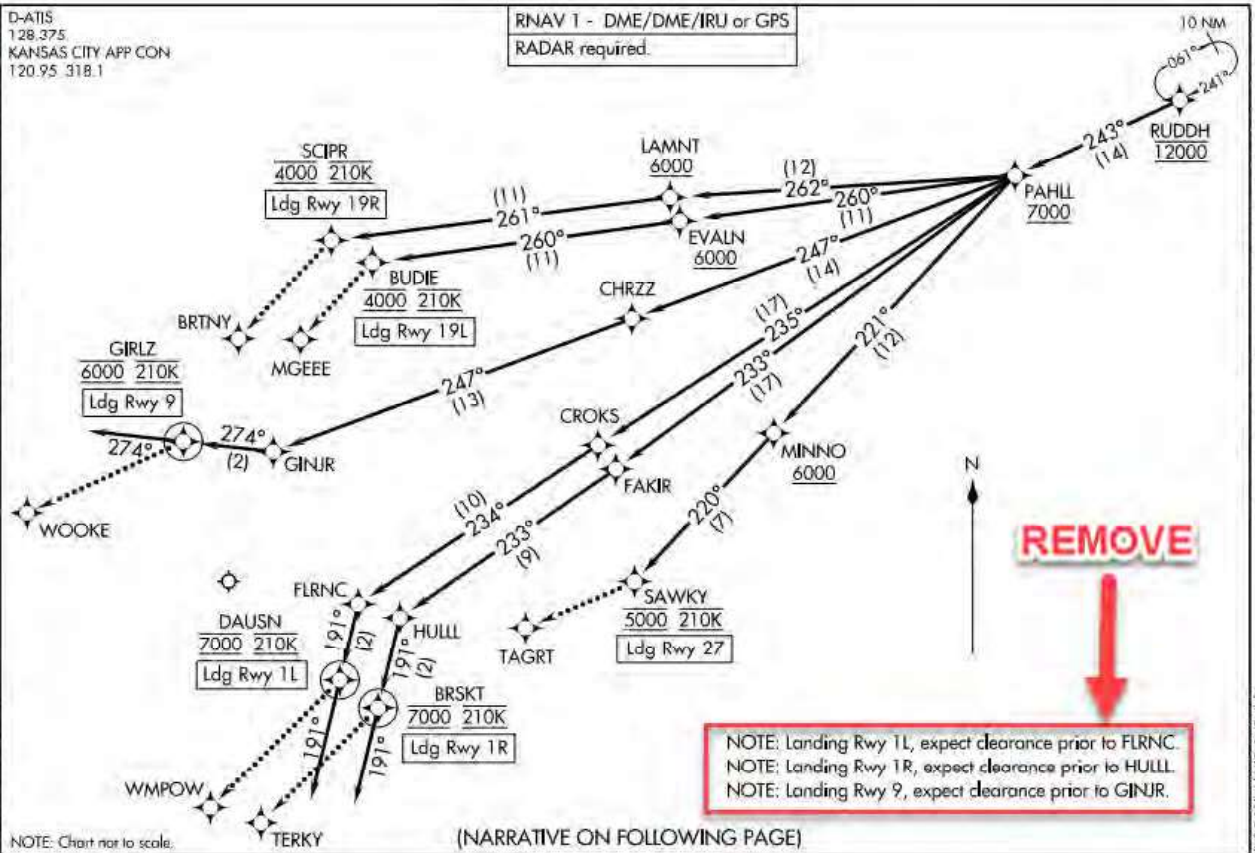
A-780 (FAA)

KANSAS CITY INTL (MCI)
KANSAS CITY, MISSOURI

(RUDDH, RUDDH) 14 JUL 22
RUDDH ONE ARRIVAL (RNAV) Arrival Routes

Up Number to TWO

KANSAS CITY, MISSOURI
KANSAS CITY INTL (MCI)



NC-3, 14 JUL 2022 to 11 AUG 2022

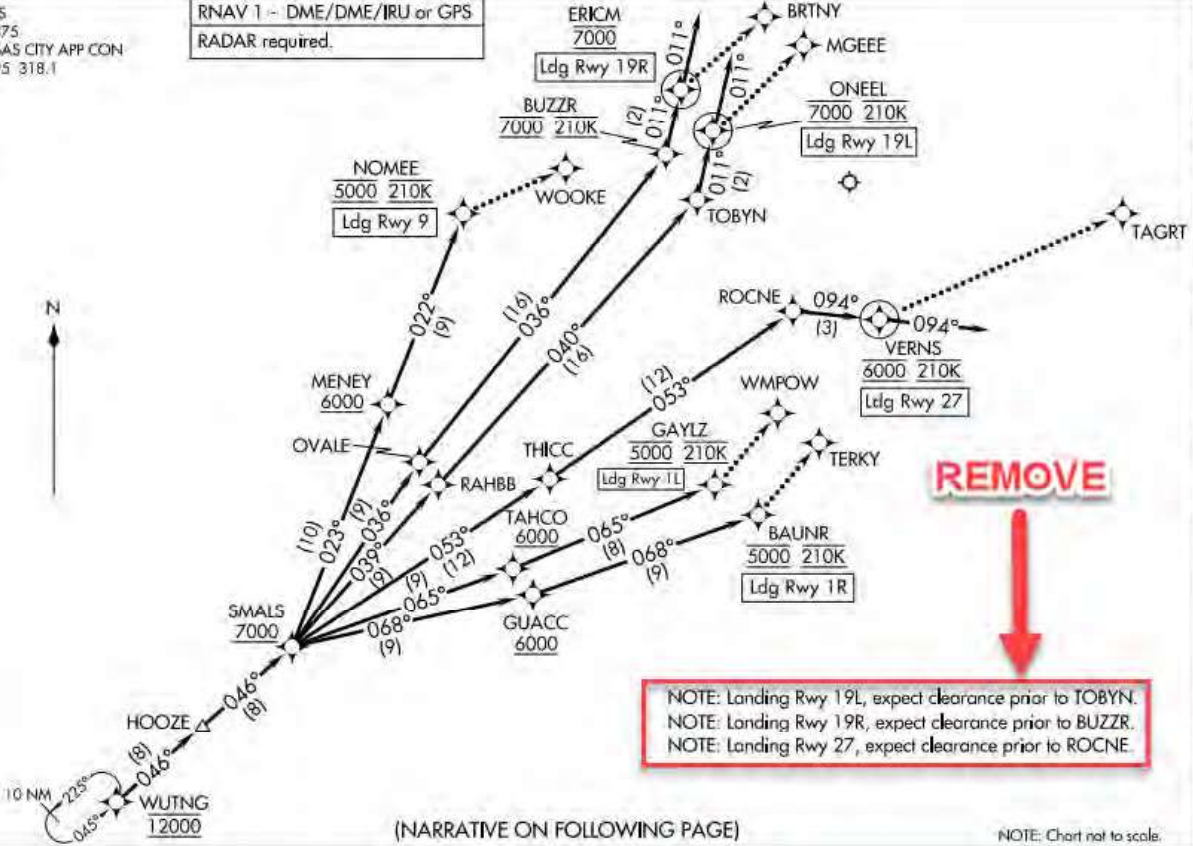
WUTNG ONE ARRIVAL (RNAV) Arrival Routes

WUTNG ONE ARRIVAL (RNAV) Arrival Routes

D-ATIS
128.375
KANSAS CITY APP CON
120.95 318.1

RNAV 1 - DME/DME/IRU or GPS
RADAR required.

NC-3, 14 JUL 2022 to 11 AUG 2022



(NARRATIVE ON FOLLOWING PAGE)

NOTE: Chart not to scale.

NC-3, 14 JUL 2022 to 11 AUG 2022

KANSAS CITY, MISSOURI
KANSAS CITY INTL (MCT)

KANSAS CITY, MISSOURI
KANSAS CITY INTL (MCT)

AL-780 (FAA)