

Flight Procedures Cover Page	Task Action: Amendment	Task Type: Textual DP	Estimated Chart Date: 12/29/2022	APWS Task ID: 509F61679F204C1F9A93470C435E915D	APWS Project ID: DA38BC905B0B4B59A5F268640BC53B47
Procedure: TAKEOFF MINIMUMS AND ODP, AMDT 4A		Enroute: NO	Specialist: Boone, Victor		Agreement Number:
Airport ID: KIRS			Airport City: STURGIS		State: MI
Facility ID:	Facility Type:	Flight Inspection Remark Type:			

Procedure Comments:
PROCESSED IAW TECHNICAL SUPPORT GROUP (AJF-17) MEMO DATED 07/07/2021,
SUBJECT: GUIDANCE FOR PROCEDURAL CHANGES REQUIRING FLIGHT INSPECTION/VALIDATION

PENDING AIRPORT DATA USED.

CONTACT INFO: CASIMIR TABAKA, AJV-A432 MANAGER, 405.954.7931

Digitally signed by
CASIMIR L TABAKA
Jul 27, 2022



SPARTA, MI

PAUL C MILLER-SPARTA (8D4)
TAKEOFF MINIMUMS AND (OBSTACLE) DEPARTURE PROCEDURES
AMDT 2 06MAY10 (10126) (FAA)
TAKEOFF OBSTACLE NOTES:

- Rwy 7**, multiple trees beginning 564' from DER, 105' right of centerline, up to 97' AGL/827' MSL.
Tree 782' from DER, 379' left of centerline, 47' AGL/784' MSL.
- Rwy 25**, multiple trees beginning 507' from DER, 47' right of centerline, up to 81' AGL/841' MSL.
Tree 117' from DER, 218' left of centerline, 47' AGL/817' MSL.
Tree 656' from DER, 464' left of centerline, 67' AGL/822' MSL.

STURGIS, MI

KIRSCH MUNI (IRS)
TAKEOFF MINIMUMS AND (OBSTACLE) DEPARTURE PROCEDURES
AMDT 4 07OCT21 (21280) (FAA)
TAKEOFF MINIMUMS:

- Rwy 6**, 300-1¼ or std. w/min. climb of 243' per NM to 1200, or alternatively, with std. takeoff minimums and a normal 200' per NM climb gradient, takeoff must occur no later than 2100' prior to DER.
- Rwy 36**, 300-1¼ or std. w/min. climb of 215' per NM to 1200, or alternatively, with std. takeoff minimums and a normal 200' per NM climb gradient, takeoff must occur no later than 1400' prior to DER.

TAKEOFF OBSTACLE NOTES:

- Rwy 6**, NAVAID 39' from DER, 112' right of centerline, 3' AGL/928' MSL.
NAVAID 51' from DER, 112' left of centerline, 2' AGL/928' MSL.
Vehicle on road 139' from DER, 511' left of centerline, 938' MSL.
Vehicle on road beginning 188' from DER, 210' left of centerline, up to 941' MSL.
Vehicle on road beginning 339' from DER, 302' right of centerline, up to 941' MSL.
Building 522' from DER, 546' right of centerline, 30' AGL/954' MSL.
Vehicle on road 667' from DER, 189' left of centerline, 942' MSL.
Pole, transmission line beginning 971' from DER, 595' left of centerline, up to 960' MSL.
Transmission line, pole beginning 973' from DER, 564' right of centerline, up to 35' AGL/961' MSL.
Pole, transmission line, tree beginning 1044' from DER, 256' left of centerline, up to 975' MSL.
Tree, pole, transmission line beginning 1079' from DER, 400' right of centerline, up to 982' MSL.
Tree, pole, transmission line beginning 1137' from DER, 235' right of centerline, up to 983' MSL.
Tree, transmission line, pole beginning 1248' from DER, on centerline, up to 997' MSL.
Tree, transmission line, pole beginning 1488' from DER, 122' left of centerline, up to 989' MSL.
Trees beginning 1586' from DER, 50' left of centerline, up to 992' MSL.
Trees beginning 2425' from DER, 347' left of centerline, up to 997' MSL.
Trees beginning 2794' from DER, 962' left of centerline, up to 1012' MSL.
Trees beginning 3342' from DER, 75' left of centerline, up to 1043' MSL.
Tree 3478' from DER, 833' right of centerline, 1026' MSL.
Trees beginning 4230' from DER, 1062' left of centerline, up to 1045' MSL.
Tree 4385' from DER, 1633' left of centerline, 1050' MSL.
Tree 4540' from DER, 1153' left of centerline, 1052' MSL.
Trees beginning 4668' from DER, 1179' left of centerline, up to 1060' MSL.
Tree 4996' from DER, 1332' left of centerline, 100' AGL/1075' MSL.
Tree 5811' from DER, 1170' left of centerline, 1094' MSL.
Trees beginning 5835' from DER, 976' left of centerline, up to 1102' MSL.
Tree 1.0 NM from DER, 1339' left of centerline, 1086' MSL.
- Rwy 18**, NAVAID 38' from DER, 90' left of centerline, 2' AGL/913' MSL.
NAVAID 38' from DER, 90' right of centerline, 3' AGL/914' MSL.
Transmission line, pole beginning 1494' from DER, 808' left of centerline, up to 75' AGL/979' MSL.
Tree, pole, transmission line beginning 1686' from DER, 598' right of centerline, up to 960' MSL.
Trees beginning 1989' from DER, 77' right of centerline, up to 963' MSL.
Trees beginning 2031' from DER, 152' right of centerline, up to 968' MSL.
Tree 2085' from DER, 550' right of centerline, 971' MSL.
- Rwy 24**, vehicle on road, tree, transmission line beginning 29' from DER, 17' right of centerline, up to 100' AGL/1016' MSL.
- Rwy 36**, vehicle on road 22' from DER, 188' left of centerline, 921' MSL.
NAVAID 39' from DER, 89' right of centerline, 3' AGL/910' MSL.
Terrain 73' from DER, 481' right of centerline, 920' MSL.
Fence beginning 78' from DER, 303' right of centerline, up to 2' AGL/921' MSL.
Tree, vehicle on road beginning 80' from DER, 222' left of centerline, up to 960' MSL.
Terrain beginning 167' from DER, 418' right of centerline, up to 924' MSL.
Trees beginning 464' from DER, 394' left of centerline, up to 963' MSL.
Tree 710' from DER, 355' right of centerline, 932' MSL.
Tree 801' from DER, 504' right of centerline, 951' MSL.
Trees beginning 979' from DER, 386' right of centerline, up to 957' MSL.
Trees beginning 1265' from DER, 475' right of centerline, up to 979' MSL.
Trees beginning 1341' from DER, 471' left of centerline, up to 967' MSL.
Tree 2359' from DER, 413' left of centerline, 969' MSL.
Trees beginning 2526' from DER, 1013' right of centerline, up to 995' MSL.
Tree 3034' from DER, 408' left of centerline, 985' MSL.
Tree 3120' from DER, 334' left of centerline, 992' MSL.

CON'T

16 JUN 2022 to 14 JUL 2022

16 JUN 2022 to 14 JUL 2022

STURGIS, MICHIGAN

AL-5362 (FAA)

19171

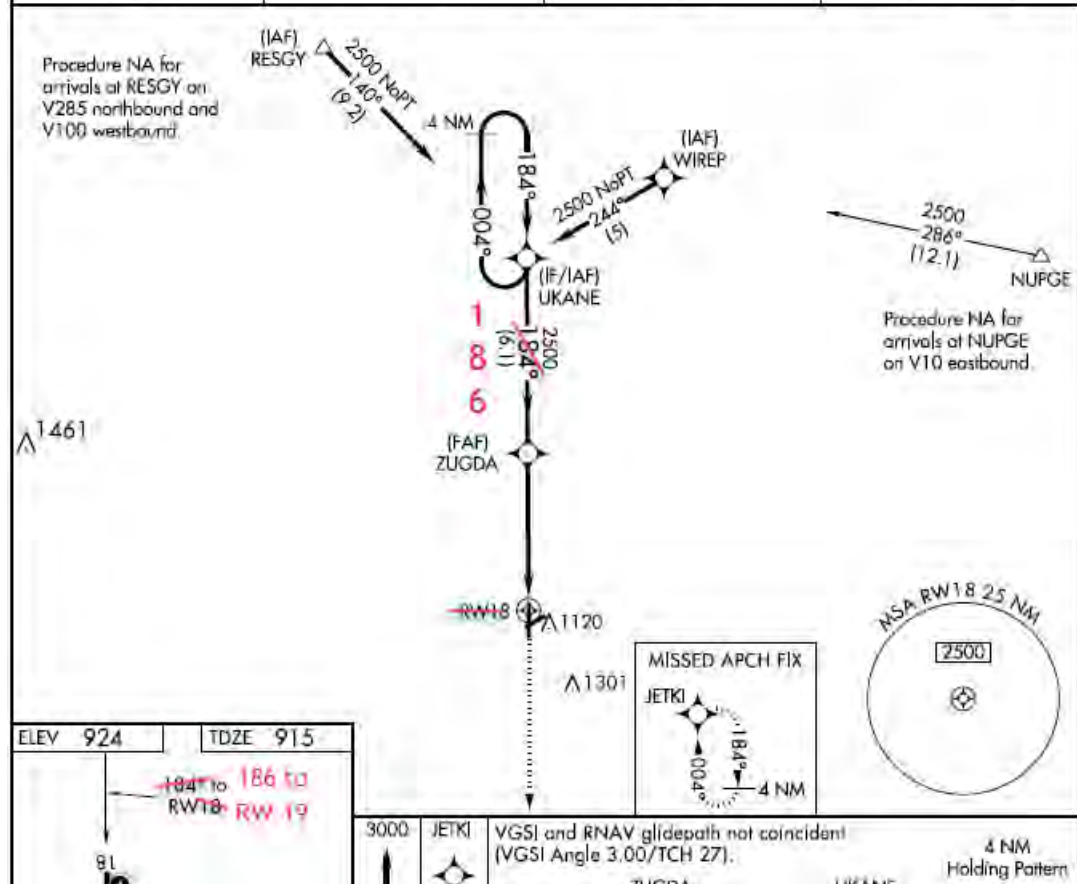
WAAS CH 90230 W18A	APP CRS 184°	Rwy Idg 5201 TDZE 915 Apt Elev 924
--------------------------	-----------------	---

RNAV (GPS) RWY 19

KIRSCH MUNI (IRS)

<p>⚠ Circling to Rwy 6, 24 NA at night. Baro-VNAV NA. When VGSI inop, Straight-In/Circling Rwy 18 procedure NA at night. DME/DME RNP-0.3 NA. Visibility reduction by helicopters NA. When local altimeter setting not received, use Three Rivers altimeter setting and increase all DA/MDA 40 feet; increase LPV visibility all Cals and LNAV Cat C and D ½ mile, increase LNAV/VNAV vis all Cals ¼ mile.</p>	<p>MISSED APPROACH: Climb to 3000 direct JETKI and hold.</p>
---	--

AWOS-3 121.325	GREAT LAKES APP CON * 121.2 239.25	CLNC DEL 118.325	UNICOM 123.05 (CTAF) 0
-------------------	---------------------------------------	---------------------	---------------------------



STURGIS, MICHIGAN

AI-5362 (FAA)

T9171

WAAS CH 42915 W36A	APP CRS 004°	Rwy Idg TDZE 915 Apt Elev 924	5201
--	------------------------	---	-------------

RNAV (GPS) RWY 01
KIRSCH MUNI (IRS)

▼ For uncompensated Baro-VNAV systems, LNAV/VNAV NA below -1.6°C (4°F) or above 47°C (116°F). DME/DME RNP-0.3 NA. Visibility reduction by helicopters NA. When local altimeter setting not received, use Three Rivers altimeter setting and increase all DA/MDA 40 feet, increase LNAV/VNAV all Cnts and LNAV Cat C/D visibility 1/2 mile. VDP NA when using Three Rivers altimeter setting. Baro-VNAV NA when using Three Rivers altimeter setting.

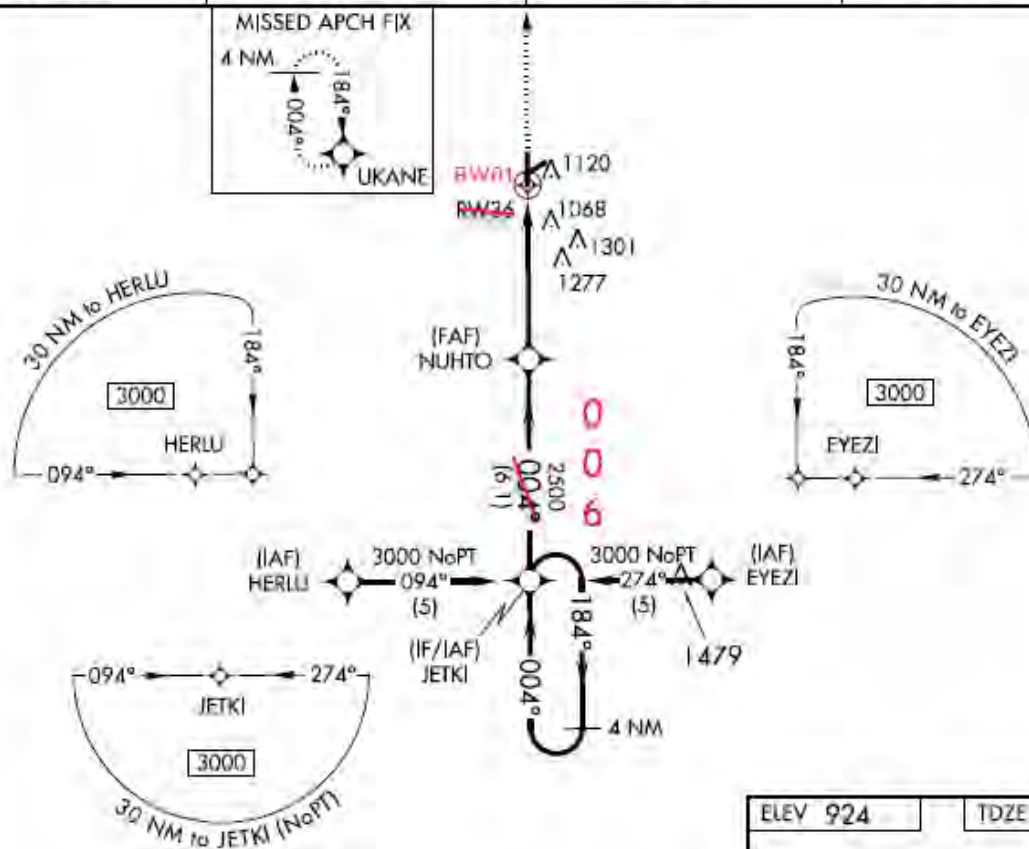
MISSED APPROACH:
Climb to 2500 direct
UKANE and hold.

AWOS-3
121.325

GREAT LAKES APP CON *
121.2 239.25

CLNC DEL
118.325

UNICOM
123.05 (CTAF) 0



ELEV 924

TDZE 915

STURGIS, MICHIGAN

AL-5362 (FAA)

20254

NDB IRS 382	APP CRS 170°	Rwy Idg TDZE Apt Elev	5201 915 924
-----------------------	------------------------	-----------------------------	---

NDB RWY 19
KIRSCH MUNI (IRS)



NA

When local altimeter setting not received, use Three Rivers altimeter setting and increase all MDA 40 feet, increase S-18 Cat C and D visibility and Circling Cat C $\frac{1}{4}$ mile. Rwy 18 helicopter visibility reduction below 1 SM. NA. Procedure NA at night.

MISSED APPROACH: Climb to 2500, then left turn direct IRS NDB and hold.

AWOS-3
121.325

GREAT LAKES APP CON *
121.2 239.25

CLNC DEL
118.325

UNICOM
123.05 (CTAF) 0

