

| | | | | | |
|---|------------------------------|---|-------------------------------------|---|--|
| Flight Procedures Cover Page | Task Action: FLIGHT CHECK | Task Type: IAP | Estimated Chart Date: 06/12/2025 | APWS Task ID: 505FA6D4E2474C1AA2E9DCE68996D36D | APWS Project ID: 06A615575EDF4A3B8090A34016E12805 |
| Procedure: ILS OR LOC RWY 31R ORIG | | Enroute: NO | Specialist: Purnell, Troy | | Agreement Number: |
| Airport ID: KMDW | | | Airport City: CHICAGO | | State: IL |
| Facility ID: | Facility Type: | Flight Inspection Remark Type: New FC Slot | | | |
| <div>Procedure Comments: CONTACT ROBERT G. HAMILTON, AJV-A33 405-954-4608.</div> <div>04/23/2025: THIS IS A CORRECTED COPY OF THE FORM APPROVED ON 02/13/2025. PROFILE: DELETED FAF TO MAP DISTANCE.</div> <div>QUALITY 9 CHECKED BEGUE</div> <div>QUALITY 16 CHECKED</div> <div>QUALITY 39 CHECKED</div> | | | | | |

| FIPC BASIC FORM | | | | | | | |
|---|---|----------------------------------|--|--|--|---|--|
| PROCEDURE: ILS OR LOC RWY 31R ORIG | | | AIRPORT NAME: CHICAGO MIDWAY INTL | | AIRPORT ID: KMDW | SPECIAL CONTROL NO: BP-03-299-25 | |
| FAC ID: MXT | | CITY: CHICAGO | | | ST: IL | ORIG CHART DATE: 06/12/2025 | |
| DFL TYPE: PROC/AR | THIRD PARTY: <input type="checkbox"/> YES | EST. TIME ON SITE: 0.5 | REIMB. NUMBER: | | PTS TASK ID: 505FA6D4E2474C1AA2E9DCE68996D36D | | |
| PREFLIGHT NOTES | | | | | | | |
| REVIEWER: glen b freeman | | | | | DATE: 04/03/2025 | | |
| COMMENTS: ILS OR LOC RWY 31C ADMT 3A CANCELLED, ORIGINAL ILS OR LOC RWY 31R ORIG CREATED - RUNWAYS 13C/31C DEACTIVATED, RUNWAYS 13C/31C. RENUMBERED AS NEW RUNWAYS 13L/31R. | | | | | CHECK ONE: | | |
| | | | | | <input type="checkbox"/> FLT CK REQ <input checked="" type="checkbox"/> NFCR <input type="checkbox"/> REJECT | | |
| | | | | | | | YES |
| | | | | | CPV COMPLETE? | | X |
| PROCEDURE RESULTS | | | | | | | |
| INSPECTION DATE: 04/03/2025 | | CREW #: VN329 | N #: | INSTRUMENT PROCEDURE STATUS: <input checked="" type="checkbox"/> SAT <input type="checkbox"/> SAT W/CHANGES <input type="checkbox"/> UNSAT | | ARINC CODING: <input type="checkbox"/> SAT <input type="checkbox"/> SAT/GOLD <input type="checkbox"/> UNSAT | |
| FLIGHT INSPECTOR SIGNATURE: glen b freeman @ 04/03/2025 09:06 | | | PRINTED NAME: FREEMAN, GLEN BURSON | | | | NOTAM INITIATED? <input type="checkbox"/> YES <input checked="" type="checkbox"/> NO |
| FLIGHT INSPECTOR REMARKS: ILS OR LOC RWY 31C ADMT 3A CANCELLED, ORIGINAL ILS OR LOC RWY 31R ORIG CREATED - RUNWAYS 13C/31C DEACTIVATED, RUNWAYS 13C/31C. RENUMBERED AS NEW RUNWAYS 13L/31R. | | | | | | | |
| IN-FLIGHT OBSTACLE REPORT | | | | | | | |
| OBSTRUCTION ID #: | COORDINATES OR LOCATION: | | GNSS ALTITUDE (MSL): | | BAROMETRIC ALTITUDE (MSL): | | HEIGHT ABOVE GROUND LEVEL: |

OLD

CHICAGO, ILLINOIS

AL-81 (FAA)

24305

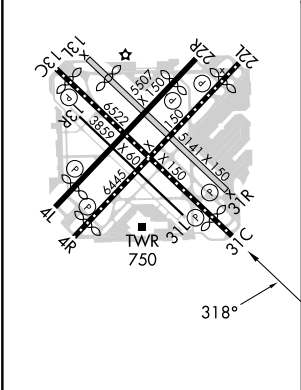
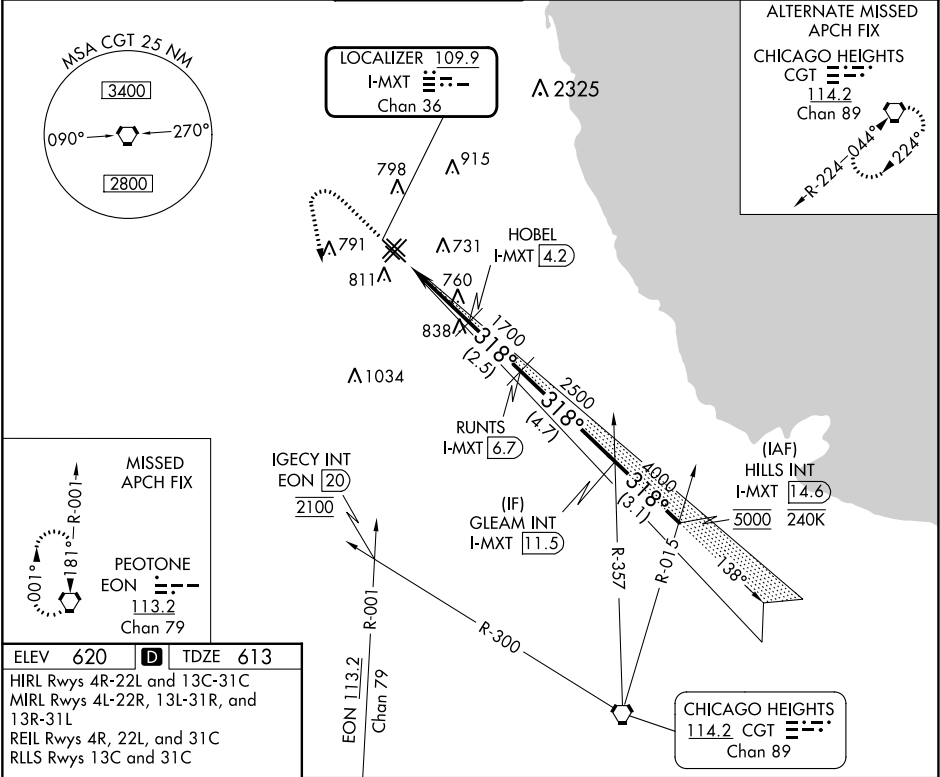
| | | |
|---|------------------------|---|
| LOC/DME I-MXT 109.9 Chan 36 | APP CRS 318° | Rwy Idg TDZE 613 Apt Elev 620 |
|---|------------------------|---|

ILS or LOC RWY 31C

CHICAGO MIDWAY INTL (MDW)

| | |
|--|---|
| DME and RADAR required. | MISSED APPROACH: Climb to 1100, then climbing left turn to 2100 on heading 150° and on EON VORTAC R-001 until crossing IGECY INT/EON 20 DME, then climb to 2600 to EON VORTAC and hold. |
| Circling Rwy 31R NA at night. Rwy 31C helicopter visibility reduction below RVR 4000 NA. | |

| | | | | | |
|-------------------------|---|--------------------------------------|---------------------------|----------------------------|-------|
| D-ATIS 132.75 | CHICAGO APP CON 128.2 353.875 | MIDWAY TOWER 135.2 269.125 | GND CON 118.075 | CLNC DEL 124.625 | CPDLC |
|-------------------------|---|--------------------------------------|---------------------------|----------------------------|-------|



| | | | | | | |
|--|------------------------|------------------|--------------------|--------------------|-------------------------|-------------------------|
| 1100 ↑ hdg 150° EON R-001 | 2100 IGECY INT ↑ | 2600 EON ⬡ | HOBEL I-MXT 4.2 | RUNTS I-MXT 6.7 | GLEAM INT I-MXT 11.5 | HILLS INT I-MXT 14.6 |
| VGSI and ILS glidepath not coincident (VGSI Angle 3.00/TCH 63). | | | | | | |
| | | | | | | |

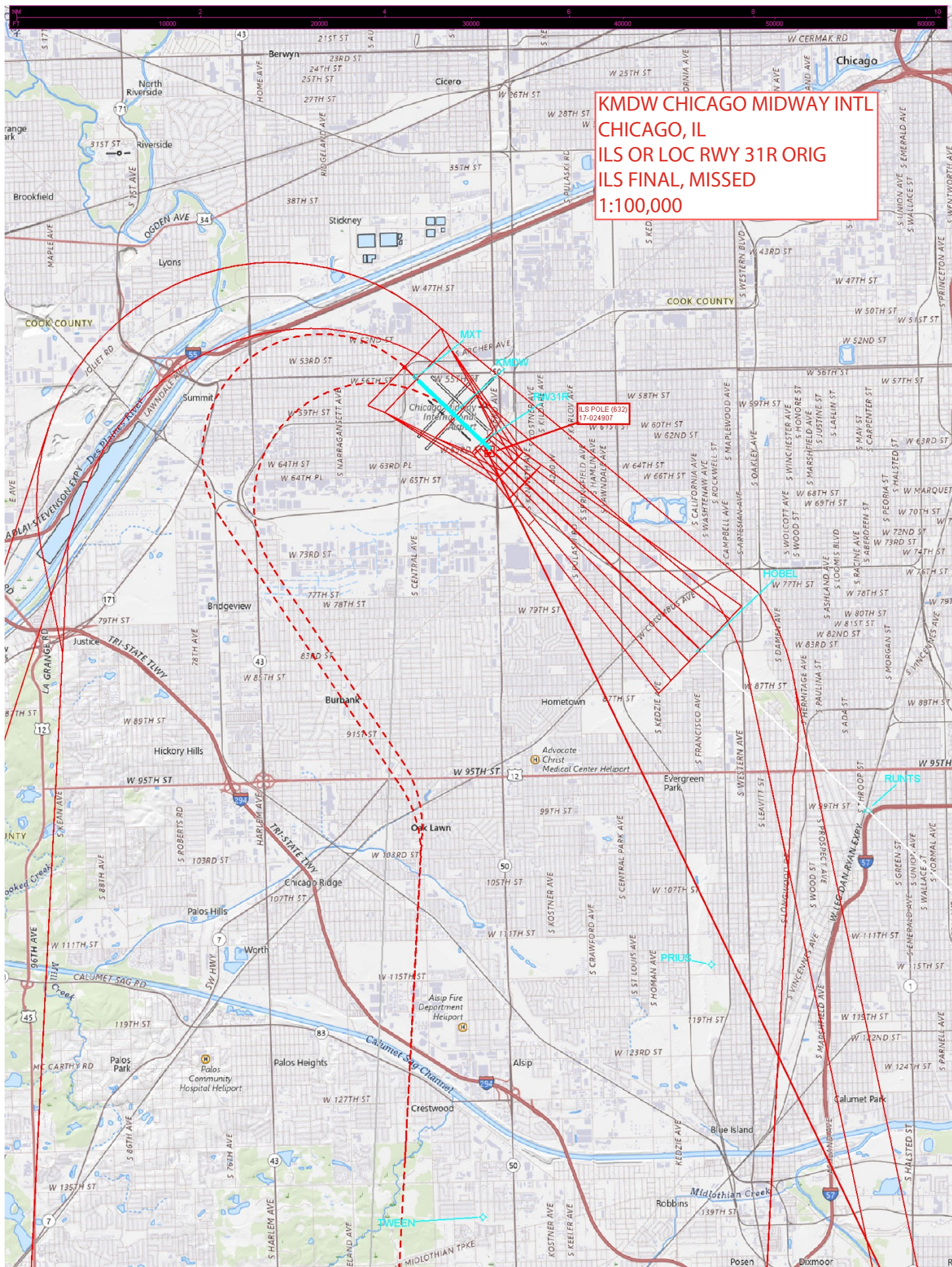
CHICAGO, ILLINOIS
Amdt 3A 20APR23

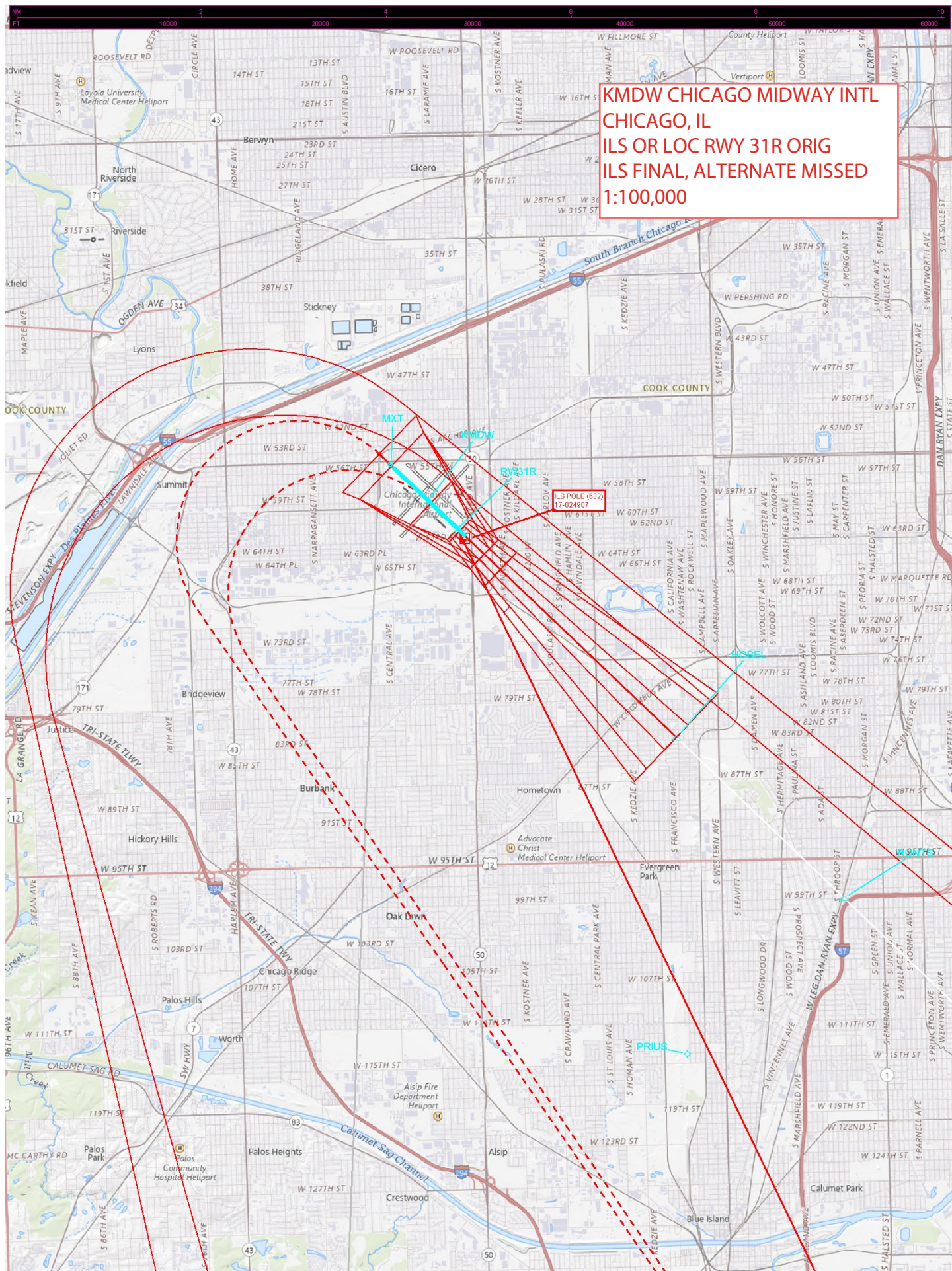
41°47'N-87°45'W

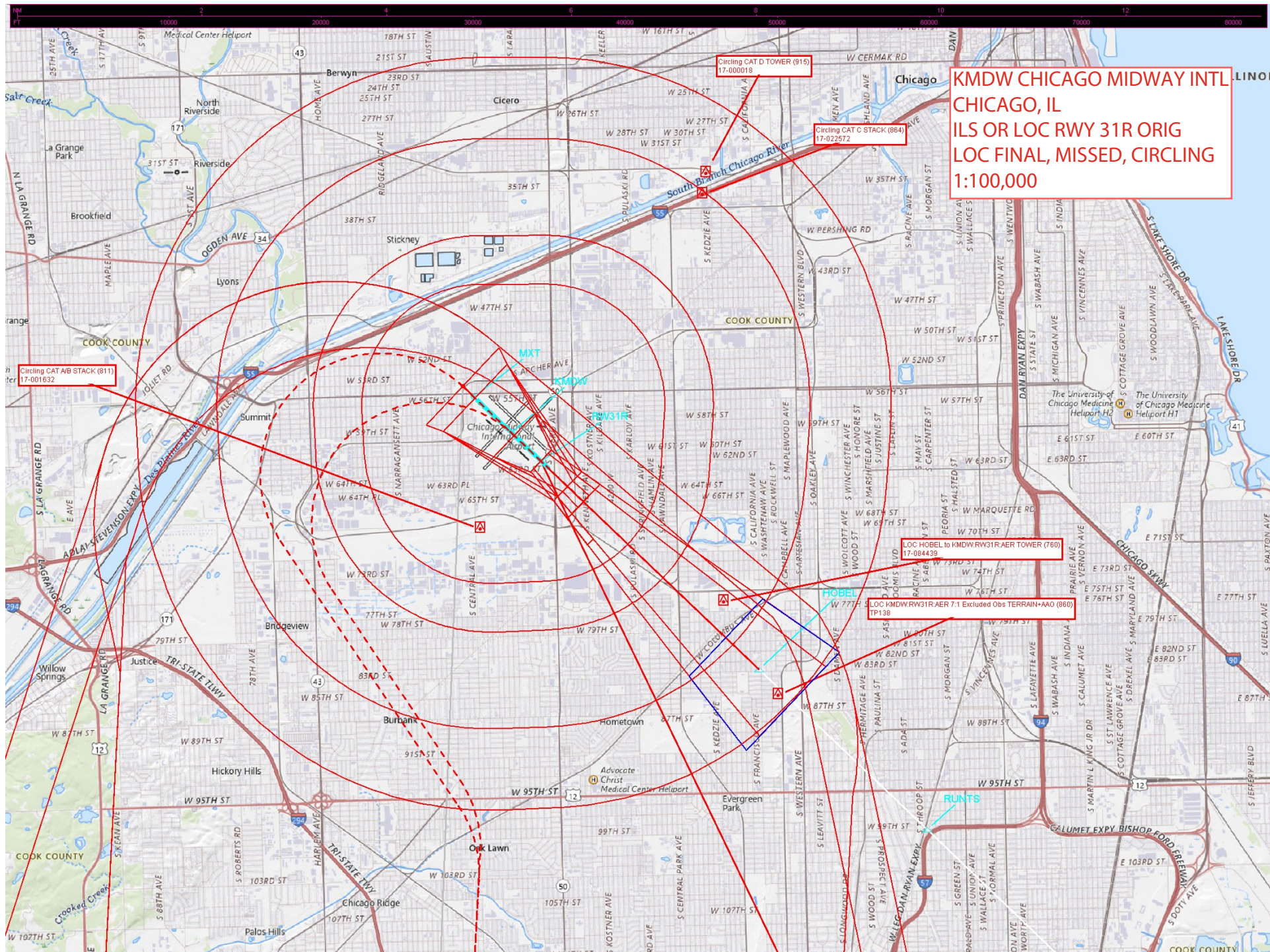
CHICAGO MIDWAY INTL (MDW)
ILS or LOC RWY 31C

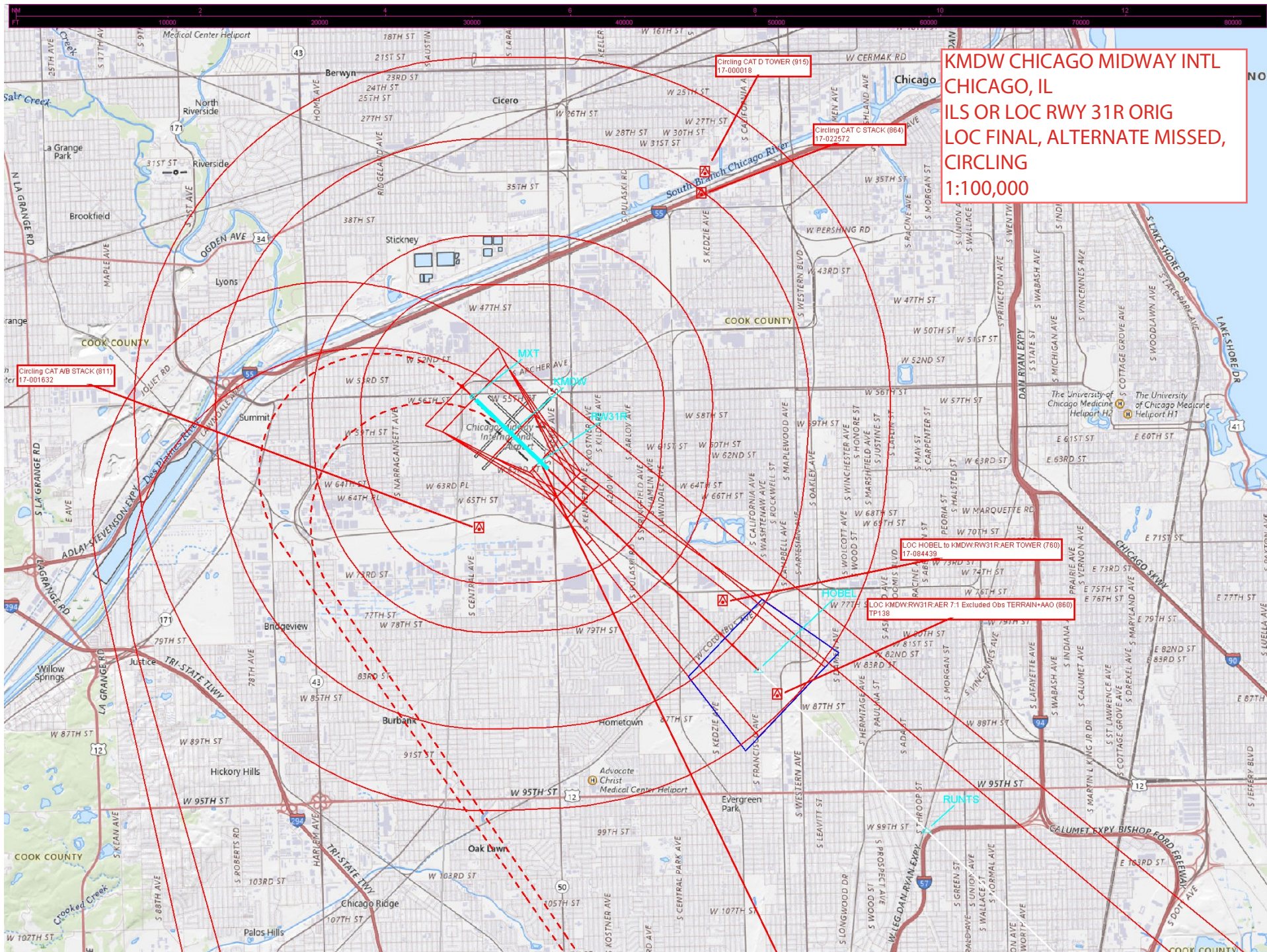
EC-3, 28 NOV 2024 to 26 DEC 2024

EC-3, 28 NOV 2024 to 26 DEC 2024









KMDW CHICAGO MIDWAY INTL
CHICAGO, IL
ILS OR LOC RWY 31R ORIG
LOC FINAL, ALTERNATE MISSED,
CIRCLING
1:100,000

KMDW CHICAGO MIDWAY INTL
CHICAGO, IL
ILS OR LOC RWY 31R ORIG
INITIAL, INTERMEDIATE, FINAL, ALTERNATE
MISSED, ALTERNATE MISSED HOLDING
1:500,000

CTC CHICAGO MIDWAY APP
WITHIN 15 NM ON 119.45 269.125
SERVICE AVAILABLE IN CHARTED
CLASS C AIRSPACE ONLY

LOC HOBEL to KMDW/RW31R AER TOWER (760)
17-084439

RUNTS to HOBEL TERRAIN+AO (876)
TP1897031

GLEAM to RUNTS STACK (1043)
18-000661

HILLS to GLEAM TOWER (1111)
17-000525

CGT TOWER (1049)
17-002719

Alt Missed Level Surface TOWER (1200)
17-002211

EXAMPLES OF CLASS C ALTITUDES

ing is to but not including floor of Cl

--- Floor in hundreds of feet MSL

GARY/CHICAGO INTL (GY)

CT-125.6 * C

ATIS 134.575

597 * L 88

923 stack

915 12

915 12

915 12

915 12

915 12

915 12

915 12

915 12

915 12

915 12

915 12

915 12

915 12

915 12

915 12

915 12

915 12

915 12

915 12

915 12

915 12

915 12

915 12

915 12

915 12

915 12

915 12

915 12

915 12

915 12

915 12

915 12

915 12

915 12

915 12

915 12

915 12

915 12

915 12

915 12

915 12

915 12

915 12