

Flight Procedures Cover Page	Task Action: P-NOTAM	Task Type: IAP	Estimated Chart Date: 06/15/2023	APWS Task ID: 5044271B07494E2ABF34ACBCE9602A18	APWS Project ID: 8ED7C7FAD72144C29F389ADCBFAAD666
Procedure: RNAV (GPS) RWY 23R AMDT 0E		Enroute: NO	Specialist: Larue, Derek		Agreement Number:
Airport ID: KGSO			Airport City: GREENSBORO		State: NC
Facility ID:	Facility Type:	Flight Inspection Remark Type:			
<div>Procedure Comments:</div> <div>ACTIVE AIRPORT DATA USED.</div> <div>THIS CANCELS FDC 2/7544.</div> <div>CONTACT RAKE MCGRAW 405-954-8711.</div> <div><div>QUALITY 30 3/1 BBLUE CHECKED</div><div>QUALITY 9 CHECKED</div></div>					

WAAS CH 90315 W23B	APP CRS 234°	Rwy Idg TDZE Apt Elev	9000 855 926
--	------------------------	-----------------------------	---

OLD

RNAV (GPS) RWY 23R

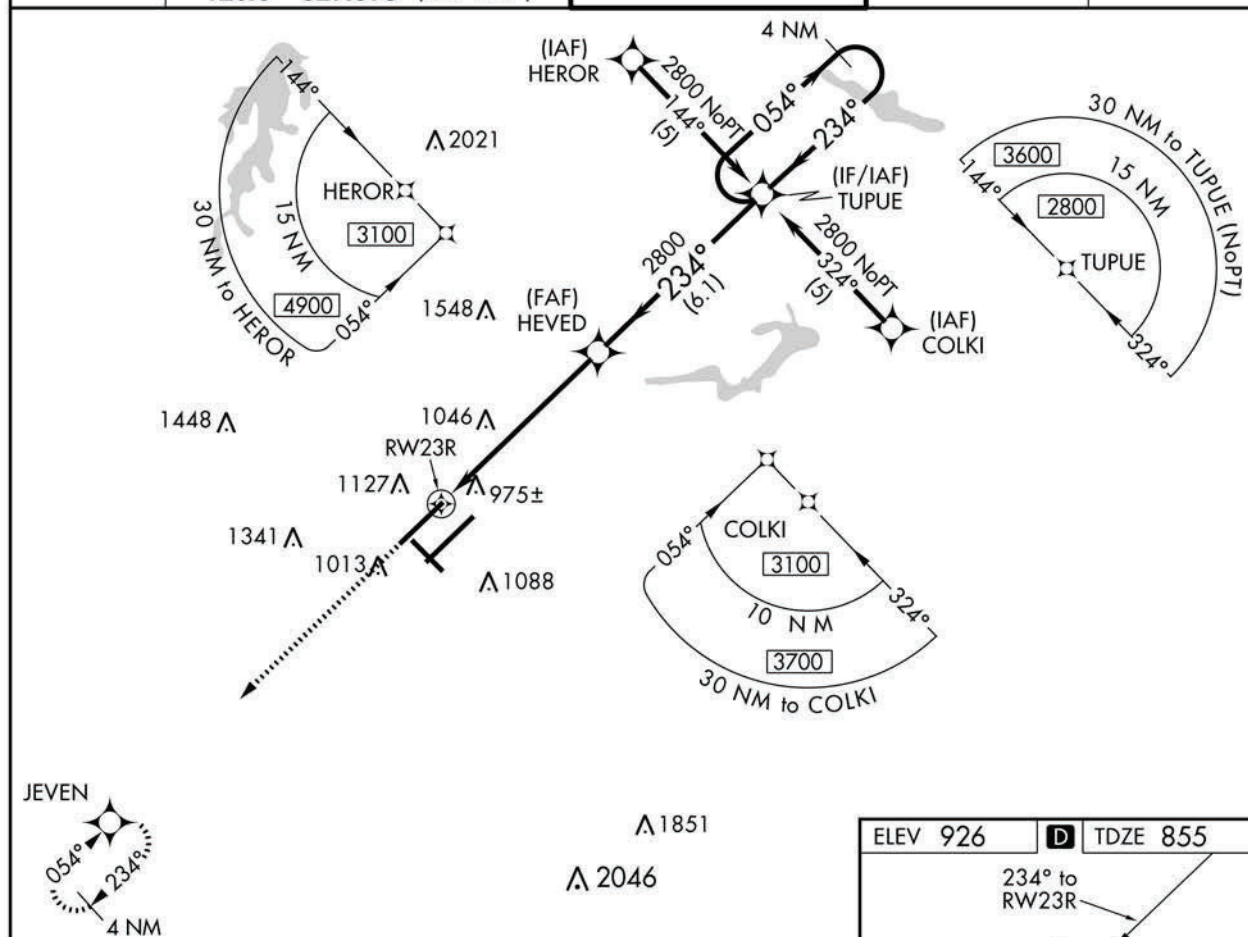
PIEDMONT TRIAD INTL (GSO)

T For uncompensated Baro-VNAV systems, LNAV/VNAV NA below -16°C (4°F) or above 47°C (116°F). DME/DME RNP-0.3 NA. Simultaneous approach authorized with ILS or LOC RWY 23L, ILS RWY 23L CAT (II). LNAV procedure NA during simultaneous operations. Use of FD or AP providing RNAV track guidance required during simultaneous operations.



MISSED APPROACH: Climb to 2500 direct JEVEN and hold.

D-ATIS 128.55	GREENSBORO APP CON 124.35 269.225 (250°-049°) 126.6 327.075 (050°-249°)	GREENSBORO TOWER 119.1 290.325	GND CON 121.9 348.6	CLNC DEL 121.75
-------------------------	---	--	-------------------------------	---------------------------



2500	JEVEN	VGSI and RNAV glidepath not coincident (VGSI Angle 3.00/TCH 72).			
		HEVED	TUPUE	4 NM Holding Pattern	
*LNAV only.	*1.4 NM to RWY23R	2800	234°	054°	2800
			2800	GP 3.00°	TCH 55
		1.4 NM	4.4 NM	6.1 NM	
CATEGORY	A	B	C	D	
LPV DA		1055/18	200 (200-1/2)		
LNAV/VNAV DA		1405-1 1/2	550 (500-1 1/2)		
LNAV MDA	1340/24	485 (500-1/2)	1340/40 485 (500-3/4)	1340/50 485 (500-1)	
C CIRCLING	1440-1	514 (600-1)	1700-2 1/4 774 (800-2 1/4)	1700-2 1/2 774 (800-2 1/2)	

