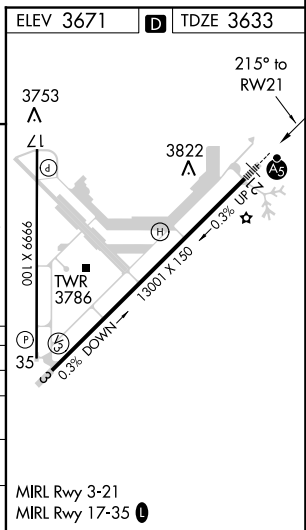


Flight Procedures Cover Page	Task Action: Amendment	Task Type: IAP	Estimated Chart Date: 05/21/2020	APWS Task ID: 50410568B6254A42A643CD7919480C8C	APWS Request ID: 9E5BF943F5BC42DC87E38C12EAA3E6D4
Procedure: RNAV (GPS) RWY 21 AMDT 0A		Enroute: NO	Specialist: Carlson, Kelly		Agreement Number:
Airport ID: KROW	Airport Name: ROSWELL AIR CENTER		Airport City: ROSWELL		State: NM
Facility ID:	Facility Type:	Flight Inspection Remark Type:			
<div>Procedure Comments: P-NOTAM.</div> <div>PROCESSED IAW AIRCRAFT OPERATIONS GROUP (AJW-33) MEMO, OCT 3, 2018: SUBJECT: FLIGHT INSPECTION REVIEW NOT REQUIRED.</div> <div>CONTACT WARDELL HENNING 405-954-9954</div> <div>0/2900</div> <div>QUALITY 9 CHECKED</div>					

RNAV (GPS) RWY 21
ROSWELL INTL AIR CENTER (ROW)

MISSED APPROACH: Climb to 6300 direct GICEC and hold.

SW-1, 10 OCT 2019 to 07 NOV 2019



CATEGORY		A	B	C	D
LPV	DA	3899- ¹ / ₂ 266 (300- ¹ / ₂)			
LNAV/ VNAV	DA	3981- ³ / ₄ 348 (400- ³ / ₄)			
LNAV	MDA	4080- ¹ / ₂ 447 (500- ¹ / ₂)		4080- ³ / ₄ 447 (500- ³ / ₄)	4080-1 447 (500-1)
CIRCLING		4140-1 ¹ / ₄ 469 (500-1 ¹ / ₄)		4140-1 ¹ / ₂ 469 (500-1 ¹ / ₂)	4240-2 569 (600-2)