

Flight Procedures Cover Page	Task Action: P-NOTAM	Task Type: IAP	Estimated Chart Date: 03/25/2021	APWS Task ID: 2C75B0E430E7417982A8B4DCCFC2E6DB	APWS Project ID: 1E3AFD709F924C46BD648F548D278454
Procedure: RNAV (GPS) RWY 31 AMDT 1A		Enroute: NO	Specialist: Lafferty, James		Agreement Number:
Airport ID: KGRI	Airport Name: CENTRAL NEBRASKA RGNL		Airport City: GRAND ISLAND		State: NE
Facility ID:	Facility Type:	Flight Inspection Remark Type:			
<div> <div> Procedure Comments:  P-NOTAM   This Cancels FDC 0/0919   Order 8260.3, chapter 2, New Circling Criteria Applied   Contact Dave Teffeteller at 202-267-5177 </div> <div>  </div> </div>					

OLD  
AL-175 (FAA)

GRAND ISLAND, NEBRASKA

APP CRS	Rwy Idg	6608
308°	TDZE	1844
	Apt Elev	1847

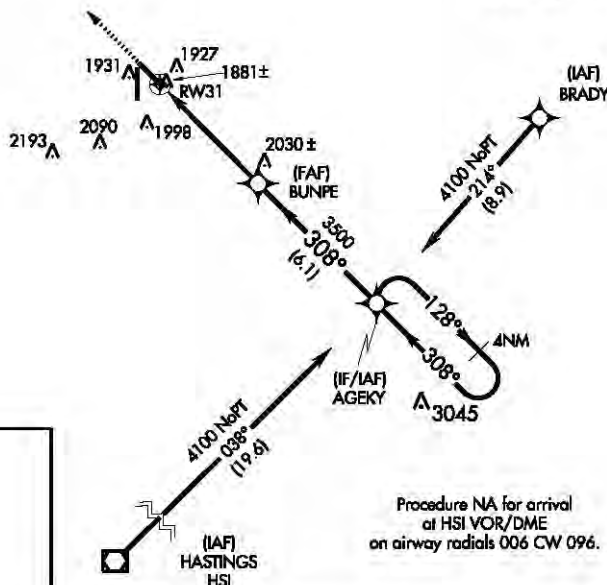
# RNAV (GPS) RWY 31

GRAND ISLAND/CENTRAL NEBRASKA RGNL (GRI)

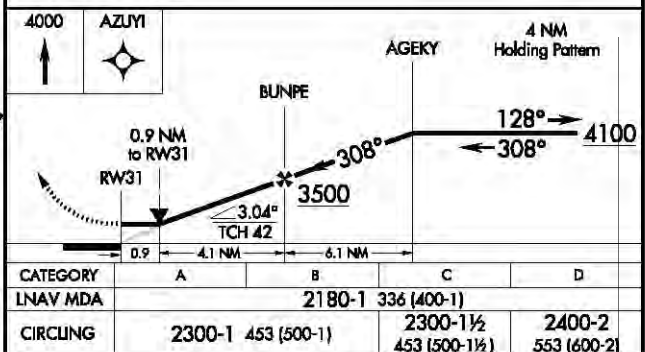
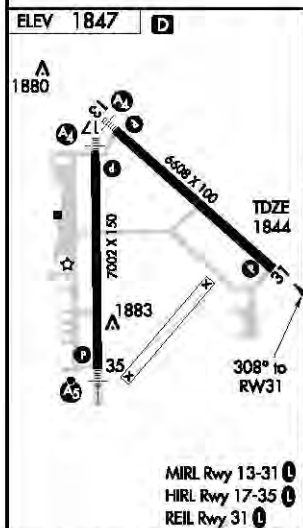
Δ	DME/DME RNP-0.3 NA. If local altimeter setting not received, use Aurora altimeter setting and increase all MDAs 60 feet. VDP NA when using Aurora altimeter setting.			MISSED APPROACH: Climb to 4000 direct AZUYI and hold.	
ATIS	MINNEAPOLIS CENTER	GRAND ISLAND TOWER★	GND CON	CLNC DEL	UNICOM
127.4	119.4 278.8	118.2 (CTAF) 0 388.2	121.9 388.2	126.05 (when tower closed)	122.95



Procedure NA for arrival at BRADY via V138 eastbound or V220 northeast bound.



Procedure NA for arrival at HSI VOR/DME on airway radials 006 CW 096.



GRAND ISLAND, NEBRASKA

Amdt 1 10266

GRAND ISLAND/CENTRAL NEBRASKA RGNL (GRI)

40° 58' N-98° 19' W

# RNAV (GPS) RWY 31

NC-2, 15 DEC 2011 to 12 JAN 2012

NC-2, 15 DEC 2011 to 12 JAN 2012

