

Flight Procedures Cover Page	Task Action: FLIGHT CHECK	Task Type: IAP	Estimated Chart Date: 10/02/2025	APWS Task ID: 4EF38867623D44A68786E2FAE93C0E98	APWS Project ID: C50F020094264B7C91CEB41DE4E581D9
Procedure: ILS Z OR LOC Z RWY 2 AMDT 27		Enroute: NO	Specialist: Purnell, Troy		Agreement Number:
Airport ID: PHOG			Airport City: KAHULUI		State: HI
Facility ID: OGG	Facility Type: ILS	Flight Inspection Remark Type: New FC Slot			
<p>Procedure Comments:</p> <p>WAVIER REQUIRED:</p> <p>8260.58B, APPENDIX C. PARAGRAPH 2A(1): ESTABLISH A CAPTURE FIX.</p> <p>8260.58C, PARAGRAPH 1-3-1C: The first leg of an initial and the first leg of an intermediate segment must be a TF that accommodates a 90-degree intercept angle.</p> <p>CANCEL FDC NOTAM 4/2819.</p> <p>REMOVED SPEED RESTRICTIONS OF 280K ON IAF GREHG AND KEIKI.</p> <p>CONTACT ROBERT G. HAMILTON, AJV-A33 405-954-4608.</p> <div><div>QUALITY 38 CHECKED</div><div>QUALITY 40 CHECKED</div></div>					

FIPC BASIC FORM						
PROCEDURE: ILS Z OR LOC Z RWY 2 AMDT 27			AIRPORT NAME: KAHULUI		AIRPORT ID: PHOG	SPECIAL CONTROL NO: PP-05-186-25
FAC ID: OGG		CITY: KAHULUI			ST: HI	ORIG CHART DATE: 10/02/2025
DFL TYPE: PROC/AR	THIRD PARTY: <input type="checkbox"/> YES	EST. TIME ON SITE: 0.5	REIMB. NUMBER:	PTS TASK ID: 4EF38867623D44A68786E2FAE93C0E98		
PREFLIGHT NOTES						
REVIEWER: jordan rolih					DATE: 07/15/2025	
COMMENTS:					CHECK ONE:	
					<input checked="" type="checkbox"/> FLT CK REQ <input type="checkbox"/> NFCR <input type="checkbox"/> REJECT	
					<div style="display: flex; justify-content: space-between;"> YES NO </div>	
					CPV COMPLETE?	
					X	
PROCEDURE RESULTS						
INSPECTION DATE: 07/15/2025	CREW #: VN408	N #: N89	INSTRUMENT PROCEDURE STATUS: <input checked="" type="checkbox"/> SAT <input type="checkbox"/> SAT W/CHANGES <input type="checkbox"/> UNSAT		ARINC CODING: <input checked="" type="checkbox"/> SAT <input type="checkbox"/> SAT/GOLD <input type="checkbox"/> UNSAT	
FLIGHT INSPECTOR SIGNATURE: jordan rolih @ 07/15/2025 17:45			PRINTED NAME: ROLIH, JORDAN ALEXANDER			NOTAM INITIATED? <input type="checkbox"/> YES <input checked="" type="checkbox"/> NO
FLIGHT INSPECTOR REMARKS:						
IN-FLIGHT OBSTACLE REPORT						
OBSTRUCTION ID #:	COORDINATES OR LOCATION:	GNSS ALTITUDE (MSL):	BAROMETRIC ALTITUDE (MSL):	HEIGHT ABOVE GROUND LEVEL:		

OLD

KAHULUI, HAWAII

AL-762 (FAA)

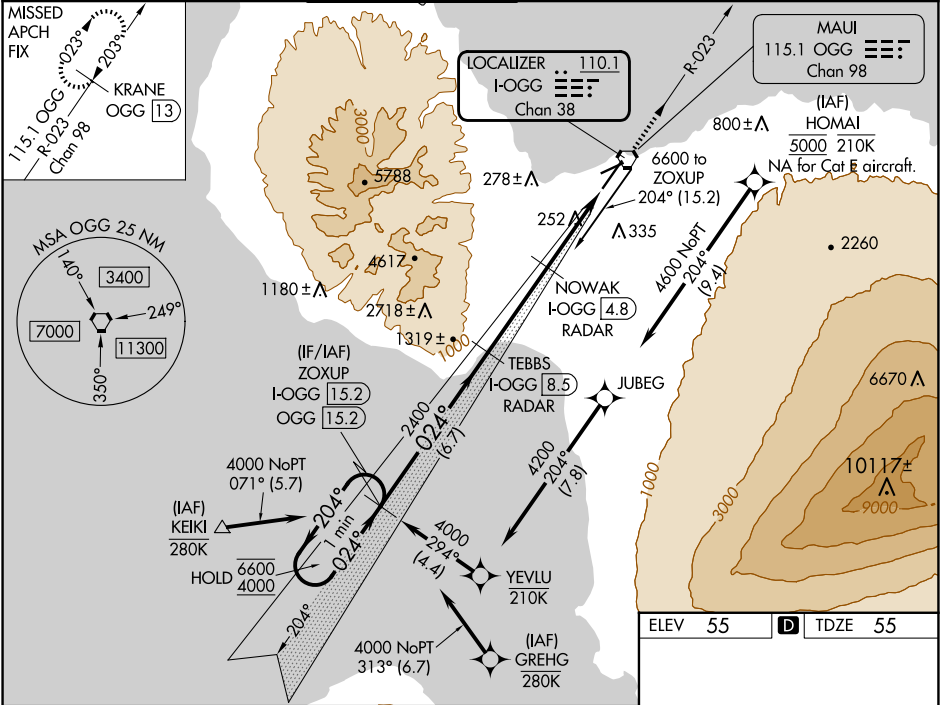
24193

LOC/DME I-OGG 110.1 Chan 38	APP CRS 024°	Rwy Idg 6995 TDZE 55 Apt Elev 55
---	------------------------	---

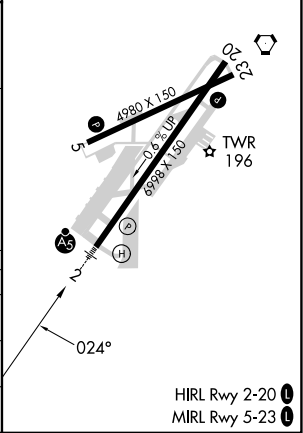
ILS Z or LOC Z RWY 2
KAHULUI (OGG)(PHOG)

RNP APCH-GPS. From HOMAI or KEIKI or GREHG.	MALSR	MISSED APPROACH: Climb to 3000 on OGG VORTAC R-023 to KRANE/OGG 13 DME and hold.
DME required.		
 For inop ALS, increase S-ILS 2 Cat E visibility to ¾ SM, and S-LOC 2 Cats C/D/E visibility to 1¾ SM.		

ATIS 128.6	HCF APPROACH 120.2 322.4 (NORTH) 119.5 225.4 (SOUTH)	MAUI TOWER★ 118.7 (CTAF) 0 279.6	GND CON 121.9 279.6	CLNC DEL 120.6 290.5	UNICOM 122.95
----------------------	--	--	-------------------------------	--------------------------------	-------------------------



Use I-OGG DME when on the localizer course. VGSI and ILS glidepath not coincident (VGSI Angle 3.00/TCH 77).					
ZOXUP I-OGG 15.2 OGG 15.2					
One Minute Holding Pattern					
6600 ← 204° 4000 → 024°					
GS 3.00° TCH 62					
2400 1220 2400 1220 2400 1220					
6.7 NM 3.7 NM 2.3 NM 1.2					
CATEGORY	A	B	C	D	E
S-ILS 2	275-½ 220 (300-½)				
S-LOC 2	520-½	465 (500-½)	520-1	465 (500-1)	
CIRCLING	520-1 465 (500-1)	620-1 565 (600-1)	740-2 685 (700-2)	1140-3 1085 (1100-3)	1720-3 1665 (1700-3)



KAHULUI, HAWAII
Amdt 26A 05OCT23

20°54'N-156°26'W

ILS Z or LOC Z RWY 2
KAHULUI (OGG)(PHOG)

HIRL Rwy 2-20
MIRL Rwy 5-23

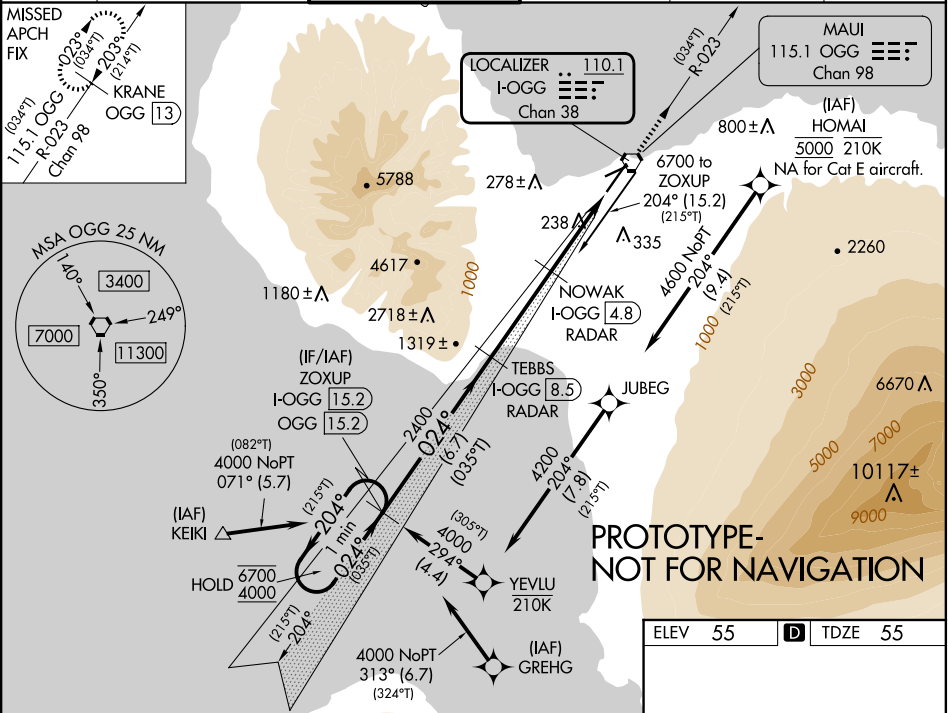
LOC/DME I-OGG	APP CRS	Rwy Idg	6995
110.1	024°	TDZE	55
Chan 38		Apt Elev	55

ILS Z or LOC Z RWY 2

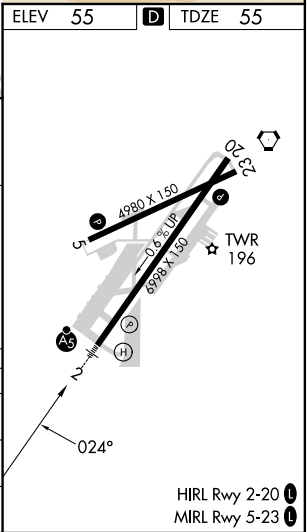
KAHULUI (OGG)(PHOG)

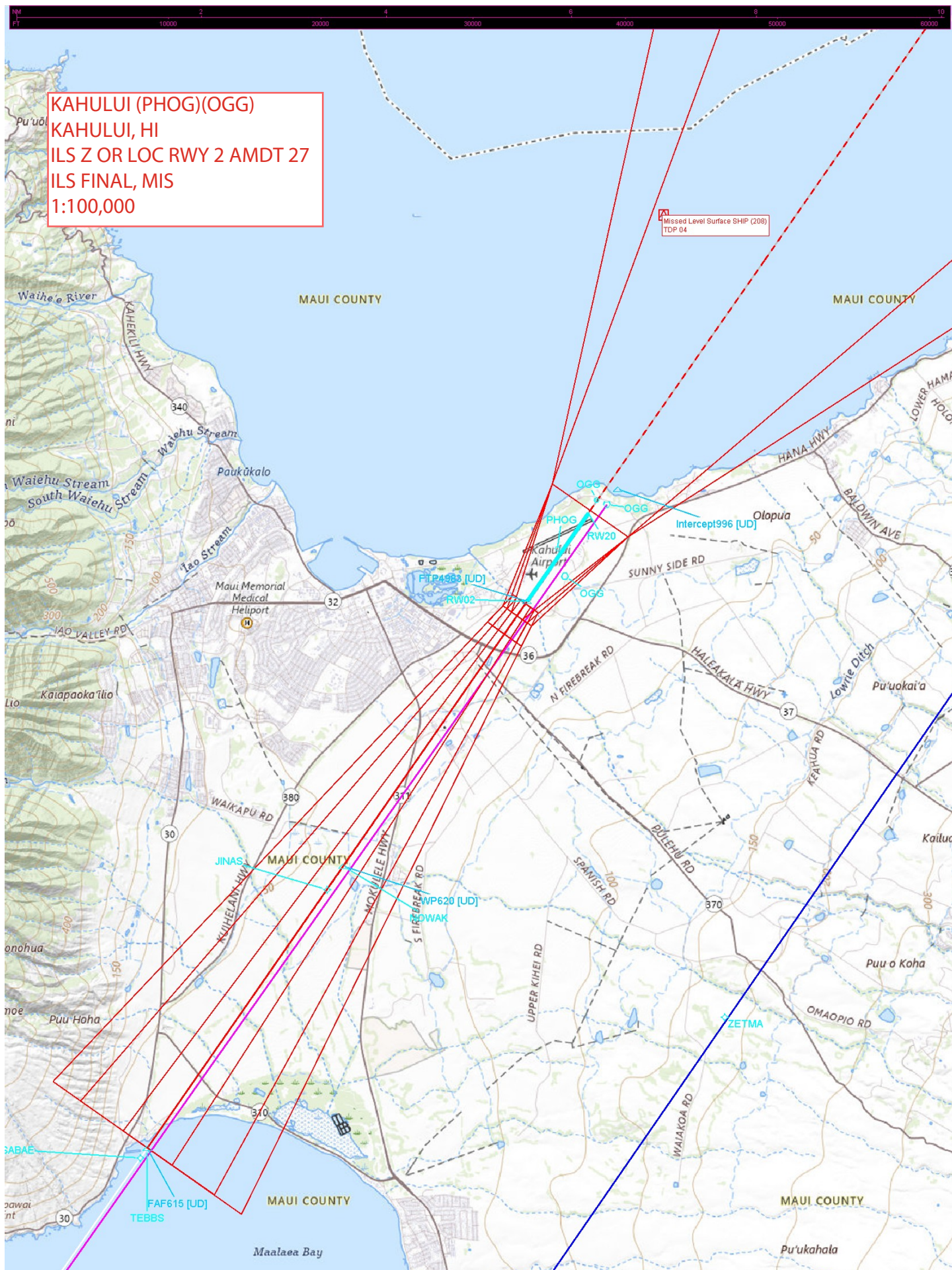
RNP APCH-GPS. From HOMAI or KEIKI or GREHG.	MALSR	MISSED APPROACH: Climb to 3000 on OGG VORTAC R-023 to KRANE/OGG 13 DME and hold.
DME required.		
For inop ALS, increase S-ILS 2 Cat E visibility to ¾ SM, and S-LOC 2 Cats C/D/E visibility to 1¾ SM.		

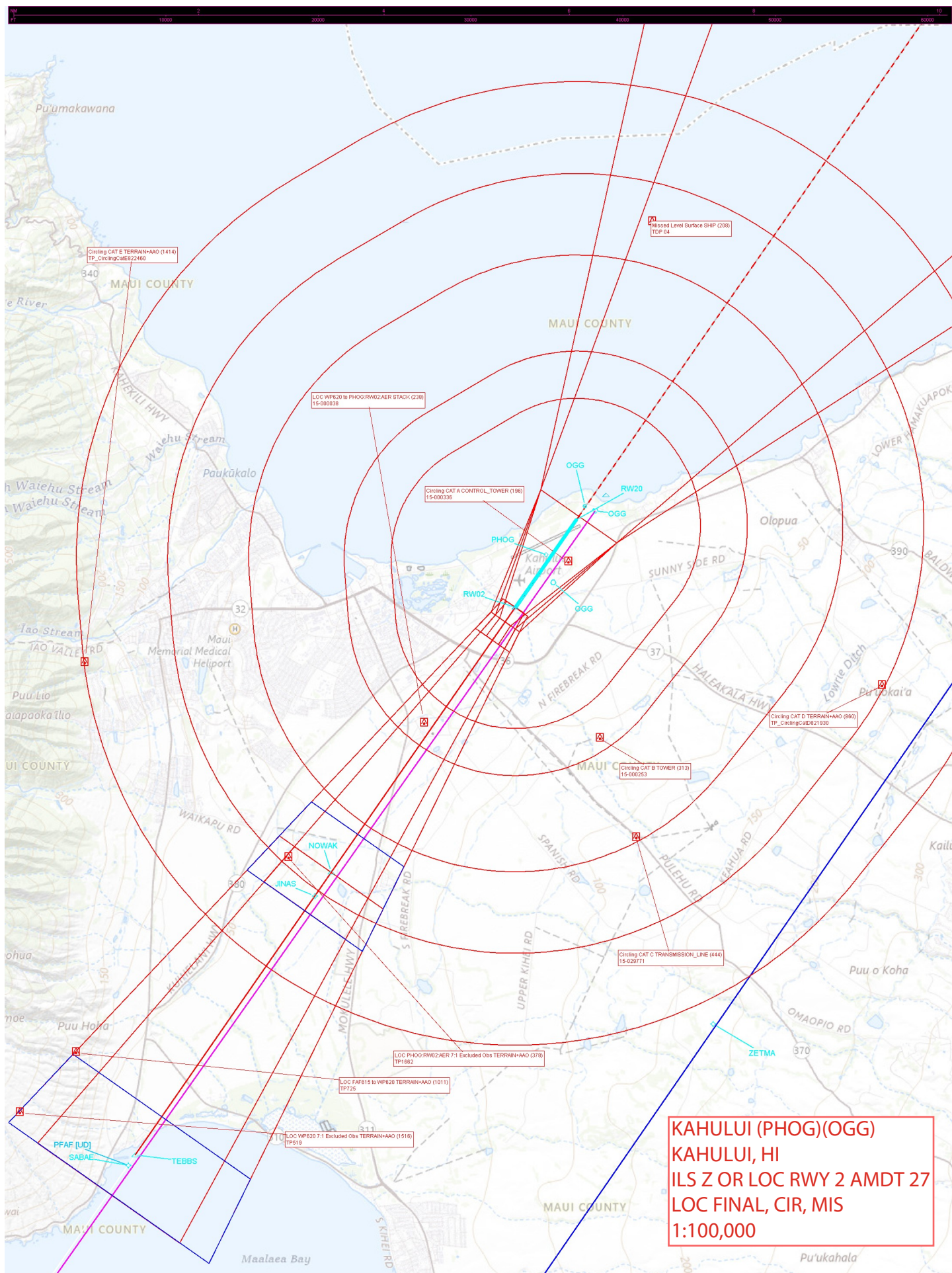
ATIS	HCF APPROACH	MAUI TOWER ★	GND CON	CLNC DEL	UNICOM
128.6	120.2 322.4 (NORTH) 119.5 225.4 (SOUTH)	118.7 (CTAF) 279.6	121.9 279.6	120.6 290.5	122.95

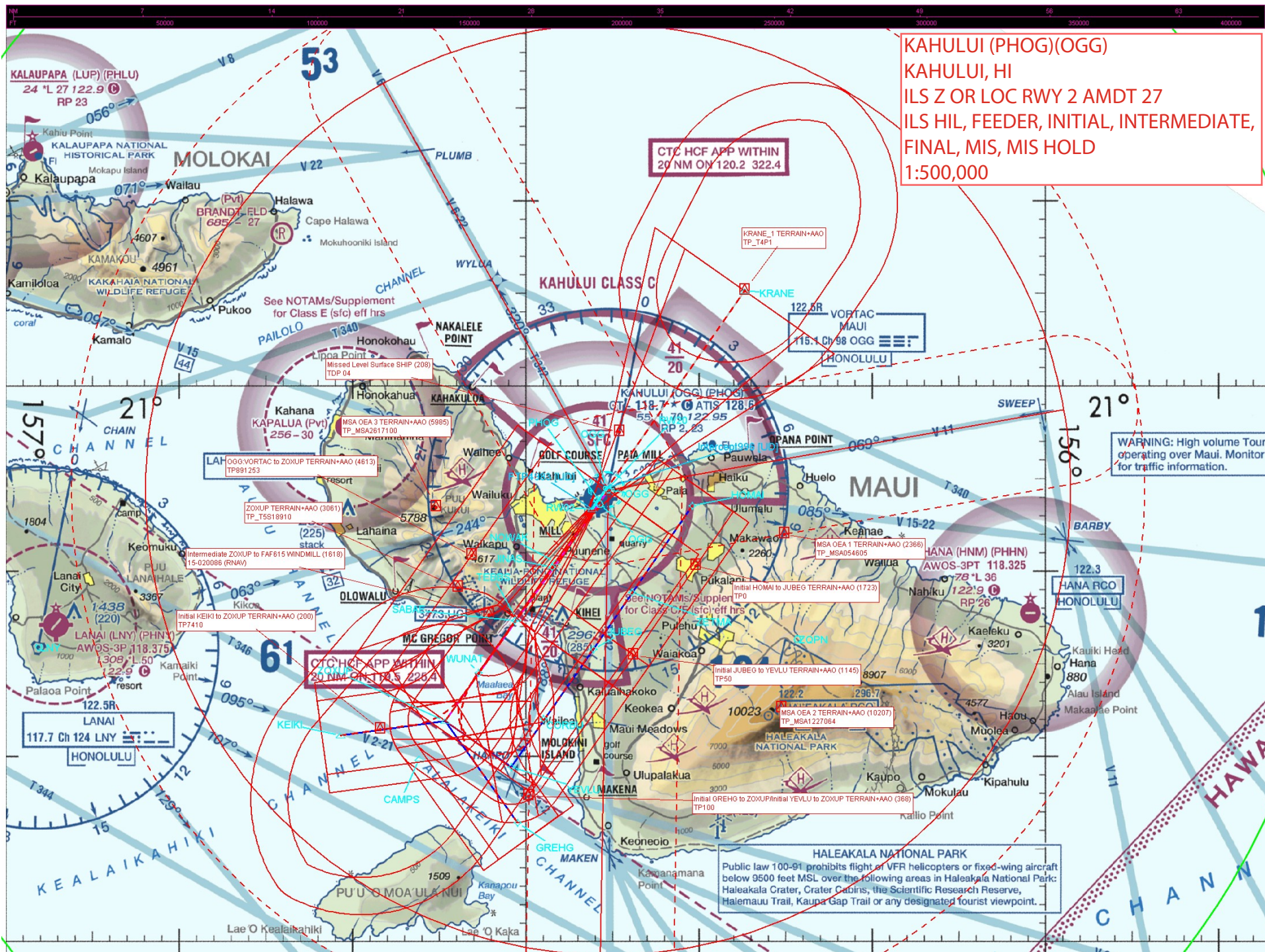


Use I-OGG DME when on the localizer course.		VGSI and ILS glidepath not coincident (VGSI Angle 3.00/TCH 77).		<div>3000 ↑ OGG R-023</div>		KRANE OGG <div>13</div>	
<div>One Minute Holding Pattern (215°T) 6700 ← 204° 4000 ← 024° (035°T)</div>		<div>ZOXUP I-OGG <div>15.2</div> OGG <div>15.2</div></div>		<div>TEBBS I-OGG <div>8.5</div> RADAR 2400</div>		<div>NOWAK I-OGG <div>4.8</div> RADAR 2400</div>	
GS 3.00° TCH 62		<div>024° (035°T)</div>		<div>1220</div>		<div>I-OGG <div>2.5</div> I-OGG <div>1.3</div></div>	
		<div>6.7 NM</div>		<div>3.7 NM</div>		<div>2.3 NM</div>	
CATEGORY	A	B	C	D	E		
S-ILS 2	275-½ 220 (300-½)						
S-LOC 2	520-½ 465 (500-½)		520-1 465 (500-1)				
CIRCLING	520-1 465 (500-1)	620-1 565 (600-1)	800-2¼ 745 (800-2¼)	1160-3 1105 (1200-3)	1720-3 1665 (1700-3)		









KAHULUI (PHOG)(OGG)
KAHULUI, HI
ILS Z OR LOC RWY 2 AMDT 27
ILS HIL, FEEDER, INITIAL, INTERMEDIATE,
FINAL, MIS, MIS HOLD
1:500,000

CTC HCF APP WITHIN
20 NM ON 120.2 322.4

KRANE_1 TERRAIN+AAO
TP_TAP1

122.5R VORTAC
MAUI
115.1 Ch 98 OGG
HONOLULU

WARNING: High volume Tour
operating over Maui. Monitor 1
for traffic information.

OGG-VORTAC to ZOXUP TERRAIN+AAO (4613)
TP891253

ZOXUP TERRAIN+AAO (3061)
TP_75518910

Intermediate ZOXUP to FAF615 WINDMILL (1618)
15-020088 (RNAV)

Initial KEIKI to ZOXUP TERRAIN+AAO (200)
TP7410

CTC HCF APP WITHIN
20 NM ON 120.2 322.4

Initial HOMAI to JUBEG TERRAIN+AAO (1723)
TP0

Initial JUBEG to YEVLU TERRAIN+AAO (1145)
TP50

Initial GREHG to ZOXUP/Initial YEVLU to ZOXUP TERRAIN+AAO (368)
TP100

HALEAKALA NATIONAL PARK
Public law 100-91 prohibits flight of VFR helicopters or fixed-wing aircraft
below 9500 feet MSL over the following areas in Haleakala National Park:
Haleakala Crater, Crater Cabins, the Scientific Research Reserve,
Halemau Trail, Kaupā Gap Trail or any designated tourist viewpoint.